

# SU---Dream Come True

With the formal dedication of the Erb Memorial Student Union today, the three-story brick and marble building, already the focal point of campus activity, will become an official part of the University.

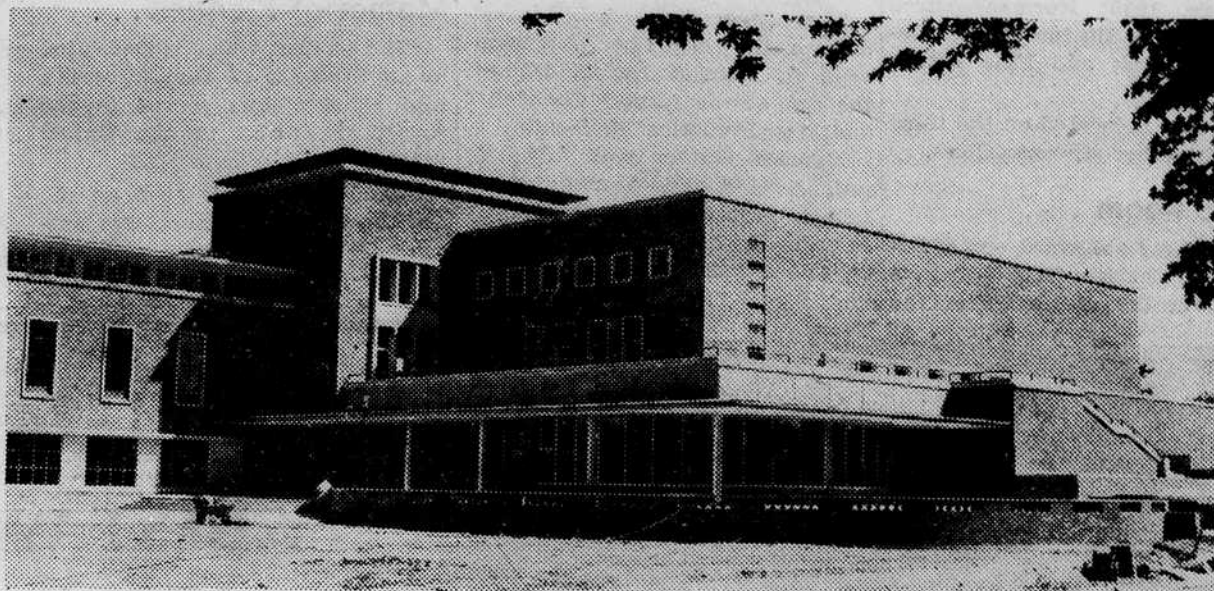
The drive for a student union at Oregon had its beginning in 1923. Twenty-five years later, in June, 1948, the reality of such a center appeared with ground-breaking ceremonies at the site on 13th St. between University and Onyx.

Students entering the University in 1948, saw the building grow from a huge muddy hole to seemingly disconnected piles of bricks and beams. But by 1949 the building began taking shape.

#### Many Watch Progress

Students and professors stopped to watch its progress. Graduating seniors told the Class of 1950 how lucky they were, but this class too, was to be graduated before the day of completion arrived.

Finally, Sept. 17, of this year, the \$2,100,000 Student Union was ready. Delays beyond the control of the contractor, architect, or University had constantly advanced the completion date, which was originally planned for April, 1950.



THE ERB MEMORIAL STUDENT UNION will become an official part of the University today, with dedication ceremonies beginning at 8:15 p.m. in the Ballroom. Taking nearly two years to build, and costing \$2,100,000 the Union is claimed to be the most fabulous student center in the United States.

Now the completed result is claimed to be the most fabulous student union in the United States. SU Director Dick Williams substantiates this claim by pointing

out the architectural design, functional use, and low maintenance of the building.

#### Students Back Claim

The students back this claim when they are using such luxurious facilities as bowling alleys, billiard and ping-pong tables, a barber shop, postoffice, cafeteria and soda bar, ballroom, art gallery, music listening rooms, lounges, an

elevator, public address system, movies, free coat checking, and offices and meeting rooms for all student groups.

Boasting 17 levels, the building naturally divides into five areas—recreational, cultural, foods, ballroom, and student offices. One-hundred eighty-five employees in the Union keep it running smoothly.

The exterior finish is brick and Indiana limestone. Woods used in finishes throughout the building include gumwood, oak, birch, walnut in paneling in the Chambers Board Room, and maple in the Ballroom floor.

Two types of marble, travertine and boisusedon, are used in the entrance pillars, and in the main lobby and Memorial Stairway.

The completely automatic elevator, powered by an electric motor, has a weight capacity of 3,500 pounds, and a 23-passenger load limit.

#### Designed by New Yorker

Dan Cooper, interior designer, New York City, planned the Taylor Lounge, soda bar, Dads' Room, second floor lounge, art gallery, ladies' powder room, music listening rooms, piano practice room, the Waller Room, and Chambers Board Room.

Drapes throughout the building were also designed by Cooper. Williams planned interior decorations for the remainder of the Union, advised by the architects and faculty members in the School of Architecture and Allied Arts.

General contractor was the Ross B. Hammond Company, Portland. Mechanical work was done by the Rushlight Company, Portland. The Morgan Electric Company, Seattle, was electrical contractor.

Already the Union has become

(Please turn to page eight)

## Donald Erb Hoped For SU at Oregon



Donald M. Erb, to whom the Student Union is a memorial, was University president from 1938 to 1943, when pneumonia ended his career of leadership and vision.

Only 43 at the time of his death, Dr. Erb had worked tirelessly for the betterment of the University during his five-year presidency. One of his major projects was restoring upper-division science courses to Oregon. He lived to see this accomplished.

About a month before his death, he said that one thing he wanted was to see a student union built for Oregon. It was at memorial services for Dr. Erb, that Mrs. Beatrice Walton Sackett, then vice-president of the State Board of Higher Education, suggested that if the University ever built a student union, it be named after Donald Erb.

He had a reputation as a scholar,

teacher, and effective administrator with a winning personality. In his chosen field of economics, he wrote numerous articles and made many addresses.

At the time of his death the Portland Oregonian paid him this tribute:

"He was that rare combination; a highly intellectual and formally trained man who, however, had not lost the common touch."

Even in 1943, Dr. Erb had been laying plans for the University after the war. He foresaw a tremendous increase in enrollment and greater attention to the social utility of learning.

Dr. Frederick M. Hunter, chancellor at the time of Erb's death, believed that Erb's work in his five years as president would contribute permanently to the essential foundation of higher education in Oregon.

"The significance of this brief period will become increasingly obvious through the coming years," he said.

The name Erb is still closely connected with the University. Erb's widow, now secretary in the English department, will be introduced at dedication ceremonies today. His daughter, Elizabeth, is a University sophomore in liberal arts, and the older daughter, Barbara, is now Mrs. John Craig of Eugene.

A painting of Dr. Erb, done by Sidney Bell in 1944, appears on the second floor landing of the SU. Beneath it are the following words of Dr. Erb:

"Do not be tolerant of misrepresentation, of superficiality, of the parading of false issues as though they were real issues. Tolerance does not extend to intellectual dishonesty or ineptitude."

## History of UO Student Union Begins Back with Class of 1923

By BOB ZWALD

When a student attends an assembly, meeting, or dance, plays ping-pong, bowls, or just stops to meet friends at the Erb Memorial Student Union, he is enacting a scene visualized by progressive and far-sighted individuals as far back as 1922.

The Student Union as it is better known, did not simply mushroom out of the ground because some geni snapped his fingers. It is the result of 27 years of hard work by Oregon students, faculty members, and alumni, and was financed 100 per cent by contributions.

The desire for a student union on the University of Oregon campus was first expressed by University President P. L. Campbell in 1922, but his plans were halted by his death and the depression.

#### McGregor Starts Fund

In 1923, John McGregor, ASUO president, gave the idea a second birth and started a building fund drive. The students were enthusiastic, committees were formed, and the money started to flow in.

The senior class voted that each senior pledge \$10 a year for a period of 10 years. The other classes made pledges and, 27 long years ago, started the drive with a noisy parade.

The years went by, and sometimes the project seemed almost lost, but the original pledges, periodical donations from local merchants and occasional contributions from students, kept the drive slowly moving.

The project took definite shape again in 1938 when the late Donald M. Erb, the man to whom the Union is dedicated, became president of the University. Erb, who guided the University until his death in December, 1943, was the

superior leader and organizer needed to bring the project back into the spotlight.

In December, 1943, the fund stood at \$58,000. The attainment of this figure was helped greatly

(Please turn to page eight)

## President's Message...

Dedication of the Erb Memorial Union today will mark the successful conclusion of an effort which began 27 years ago. I am confident that everyone who views this fine building will agree that it was well worthwhile.

It is fitting that this building be a memorial to all University men and women who lost their lives in the service of their country, for such a center has been foremost in student thoughts for more than a quarter of a century. It is fitting, too, that it be named for President Erb whose keen interest in students and their welfare earned him the admiration and respect of all who knew him.

Even more impressive than the actual building, it seems to me, is the fact that every segment of the University family had an important part in making it possible. The Erb Memorial Student Union is an outstanding example of what cooperative effort, directed in a constructive vein, can do.

It is with real feeling, therefore, that I take this means of thanking all those who had a part in this project—the students who persisted in their efforts to obtain such a center, the thousands of alumni, mothers and dads who contributed of their time and money, the faculty who helped with the plans and gave encouragement in many other ways, and the countless other friends of the University who carried some part of this effort. They can, with reason, feel proud of this building and what it means to the campus.

President H. K. Newburn