

SU Cafeteria, Soda Bar Pillars Add Classical Touch to SU Offer Variety in Eating

Forming one of the major services of the Student Union, the dining area on the main floor offers cafeteria service, banquet facilities, and a soda bar.

Miss Ruth Coffey, foods director, is in charge of this center and all catering services.

The half-circular seating area, dominated by its large windows, has been nicknamed the "Fish-bowl." Here booths and tables will seat approximately 350.

The dining room, finished with red brick walls and floor, features red plaid booths circling the center column. Red plastic booths are in the northeast side. Formica tables seating two to four persons cover the floor space. The Empire State chairs are of beechwood with seats of green plastic.

On the south is the green and yellow soda bar, manned entirely by student help. Fifteen-hundred

students patronize the bar each day.

Between 500 to 600 donuts and 1,600 to 2,000 cups of coffee are dispensed daily at the soda bar, Miss Coffey reports. Sandwiches, pie, and fountain service are also offered here, as well as breakfast.

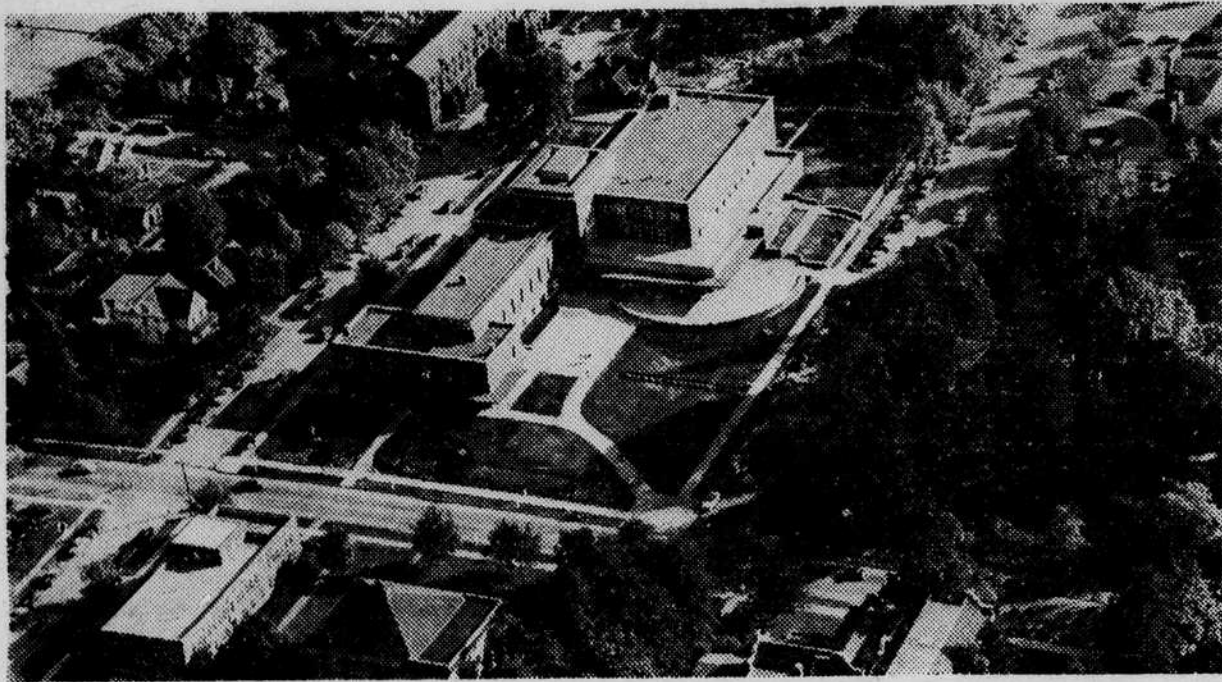
Lunch and dinner are daily served to 350 students by the cafeteria.

Some of the modern conveniences of the kitchen are a machine for cutting french fries, an automatic potato peeler, and an electric scrubbing machine with a vacuum pickup for the floor.

Banquets or meetings can be held in rooms 110-114, in which partitions can be removed to increase the capacity. Each room will accommodate 26. Self-service in the cafeteria or catering service are available for groups using the rooms.



—Courtesy The Oregonian
WORKS OF ART are displayed in this pillared vista on the second floor of the Student Union. Now being shown in the art gallery are modern paintings by Charles H. Dietmann, who received his masters degree from the University.



—Courtesy Eugene Register-Guard
FROM THE AIR the impressive beauty of the new Erb Memorial Student Union is strikingly noticeable. Taking up the entire block from 13th to 15th and Onyx to University, the SU is in the center of the fast-developing new campus.

Blue Grass, Shrubs, Flowers, 1950 Tree To Surround Union

Hundreds of square feet of rolling blue-grass, shrubbery, flowers, and trees are included in landscaping plans for the Student Union, according to I. I. Wright, superintendent of the physical plant.

Already underway, the landscaping project was originally scheduled for completion by Homecoming, but unfavorable weather conditions have delayed the work, Wright said.

H. P. Sebold, professor of architecture, designed the SU landscaping plan. Work is being done by the University physical plant crew.

The entire project, with the exception of one tree, will cost an estimated \$8,700, Wright stated. This tree, given by the Class of 1950, will be planted north of the terrace.

The general layout of the design calls for lawn on three sides of the building and plots of shrubbery in triangles where the walkways meet.

Parking area for approximately 35 cars will be built south of the building. Lawns and crosswalks will cover the rest of the block south to 15th St.

The entire project will be completed sometime next summer, Wright said.

Twenty-three persons weighing approximately 152 pounds each can ride at the same time in the Student Union elevator, with a weight capacity of 3,500 pounds.

Complete Post Office Facilities Available for Eastside in SU

Serving the University and the east Eugene area, the post office in the Student Union began operation Oct. 18.

The post office is located in quarters in the north end of the SU with an entrance on 13th St. and another leading to the main area on the first floor of the Union.

All types of mail facilities are offered except general delivery and box service. This includes money orders, stamp sales, and parcel post. Carrier delivery for the area east of Patterson St. operates from the new post office.

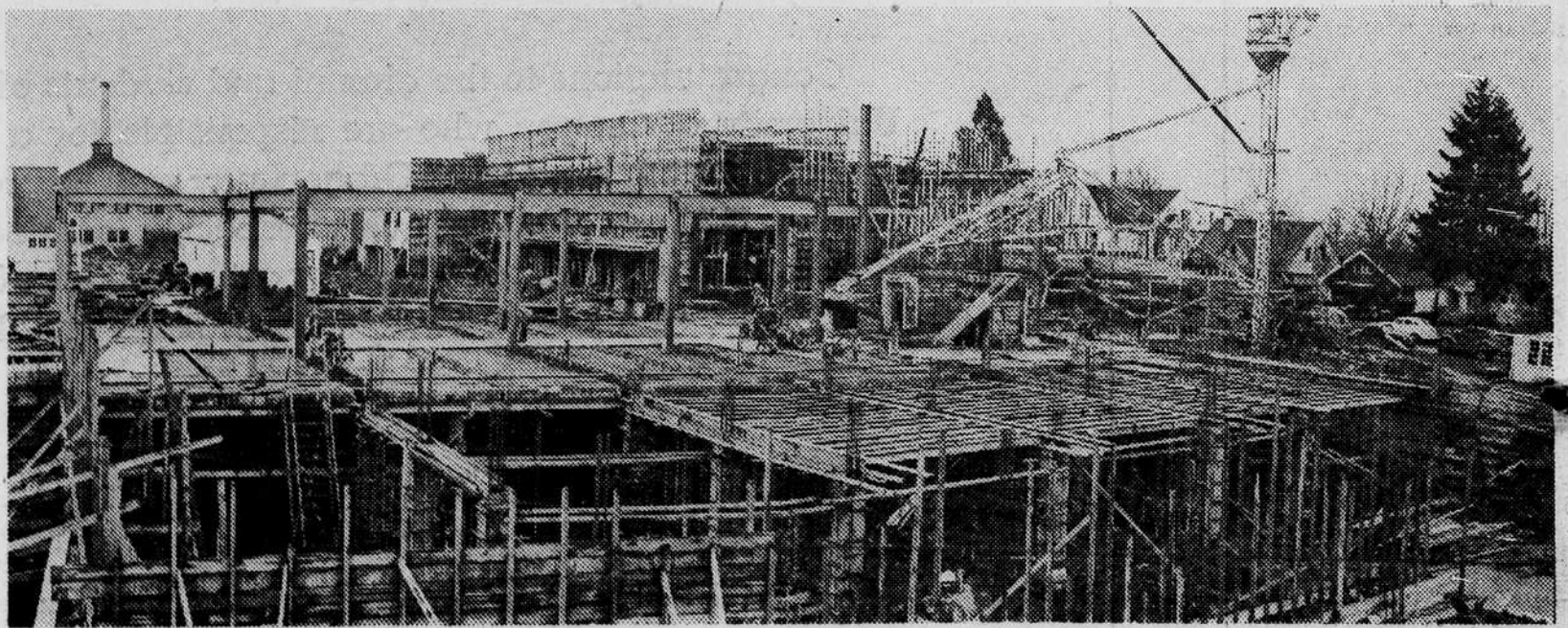
Superintendent of the new branch is John McMullen, a University graduate of 1931. McMullen, who has spent 24 years in the Eugene post office, directs a staff of 18 civil service employees, be-

sides 14 foot carriers, one mounted carrier for suburban delivery, and one relief carrier.

Ethan Newman, Eugene postmaster, pointed out that the necessity for a branch in the east area had long been recognized by post office officials. Before plans for the office in the SU were made, officials had been attempting to find a suitable location for the branch.

This is the only classified branch of the Eugene post office. Six contract stations in the city give service outside the jurisdiction of the main post office.

The branch operates under regular post office hours five and one half days a week. The money order window is open from 9 a.m. to 5 p.m.; stamp and parcel post service is from 8 a.m. to 6 p.m.



—Courtesy Eugene Register-Guard
UNDER CONSTRUCTION early in 1949, the framework and scaffolding indicate little of the eventual beauty of the \$2,100,000 building. This shot, taken north of 15th St. shows the Men's Swimming Pool nearly hidden in the left background.

We Appreciate Having Had The Privilege
Of Furnishing The Face Brick On The
ERB MEMORIAL STUDENT UNION

Willamina Clay Products Co.

PORTLAND, OREGON