

# Basement Attracts Recreation-Lovers

## Eight Bowling Alleys Draw Top Crowds

Probably one of the most popular places in the entire Student Union building is the recreation center in the basement.

In fact, business in this area during the first two weeks exceeded that anticipated for the whole term, Louis Bellisimo, recreation manager reported.

Facilities include eight lanes for bowling, pool and billiard tables, ping-pong tables, and a four-chair barber shop.

### Bowling Center

The center of recreation is the bowling alley, in use from 9 a.m. to 10:30 p.m. Sunday through Thursday, and from 9 to 12:30 a.m. Friday and Saturday.

Brunswick-Balke-Collender company supplied the entire list of facilities, including the lockers and a "Brunscometer," the gadget that determines finger sizes for bowling balls.

The ultra-modern facilities include, for example, semi-automatic pin carriages. Work of the pin setter is limited to merely placing the pins in the carriages and pulling a cord that lowers and releases them.

### "Range Finders"

Located on each of the eight lanes is a series of black marks called "range finders." These are guides for the bowlers that compare with the sights on a gun. Many "spot" bowlers use these range finders for sighting their target rather than keeping their eyes on the pins.

The lanes are constructed of maple at the front and back and of pine in the middle. The hard wood assures protection against bounding and flying pins, Bellisimo explained.

Another feature of the SU bowling alley is the automatic eye called "Tel-o-foul" which switches on a light and rings a buzzer when a bowler steps over the foul line.

### Experience Not Necessary

Experienced bowlers are not the sole patrons of the alley. Time has

## Just Pull a Cord, Pins Are Standing

A pin setter's life isn't so bad! Ask any one of the pin boys working at the bowling alleys in the basement of the Student Union.

First reviewing the actual job of setting the pins—all the pin setters have to do is pull a cord and the semi-automatic carriage filled with the "ten pins" lowers to the alley, releases the pins, and then goes back into its original position.

Since pin setters do not have to cope with the problem of lowering and raising the carriage, it is unlikely that they will be hit by an over-enthusiastic bowler, Louis Bellisimo recreation manager pointed out.

The "pin boys" have their own rooms for studying when activity on the alleys is slow. Here are sofas, tables, and chairs, plus special lockers and restroom facilities for their use.

Ten free lines of bowling are offered weekly in the Student Union to the highest scorers for both men and women.

A novel feature of the SU bowling alley, the "Tel-e-foul," switches on a light and rings a buzzer when the bowler steps over the foul line.

been set aside when students who either want to learn the game or improve it may have an opportunity, to play.

Bellisimo can usually be found around the area, offering pointers and practical demonstration to those who want it. For bowlers desiring extensive lessons, there has been a cost program set up on the basis of eight lines an hour.

### Shoes Sterilized

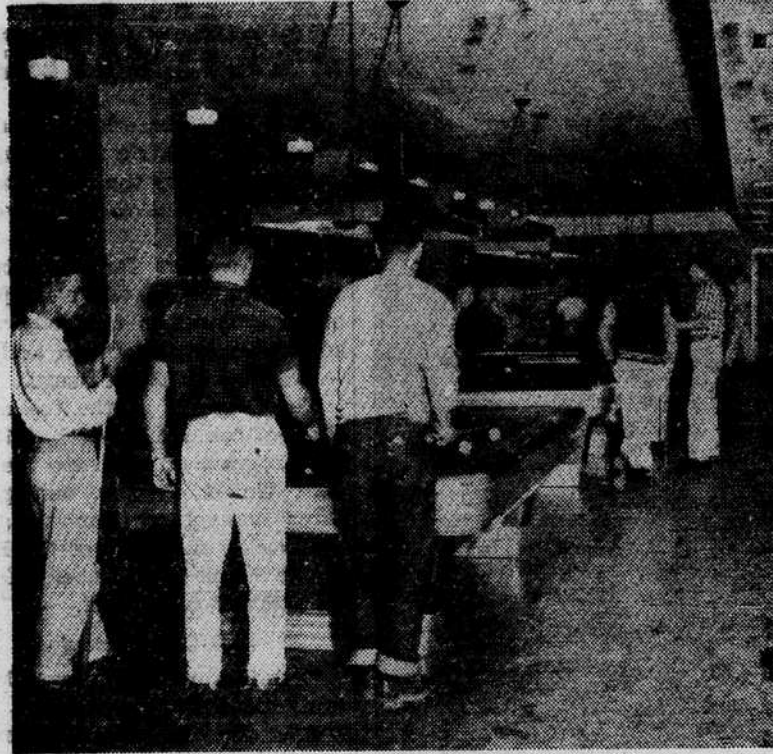
Bowling classes under PE 190 are also offered daily during the week from 9-11 a.m. Intra-mural bowling League teams will also be using the lanes.

Other facilities include locker space and a sterilization treatment for bowling shoes. The lockers, 55 of them, are located in two special rooms and are available to any student.

Bowling shoes are sterilized after use by an instrument known as the Whittaker "Ultra Violet Specialties Germicidal and Therapeutic Lamp." This ultra-lamp, as it is more commonly called, is designed to accommodate two shoes that are exposed to ultra-violet rays by the push of a button.

Nucleus for the recreation area is the desk by the billiards section. From that desk, a single touch-button board controls the entire electrical hook-up of the SU basement.

In the concession department, the desk sells candy, cigarettes, and books on bowling, billiards, and pool. Students may also purchase their own bowling balls at the desk.



—Courtesy The Oregonian  
**BILLIARD ENTHUSIASTS** find top facilities in the basement recreation area, one of the most constantly busy centers of the Student Union. Bowling and table tennis are also offered.

## Cue Sharks Find Ideal Haunt

For those who would rather relax by playing with something smaller than a bowling ball, pool and ping-pong tables are also available in the SU recreation area.

Facilities for cue-sharks include tables for billiards, pocket billiards, and snooker, that compare favorably with any in the state. There are six pool tables, three for billiards, and one for snooker.

All are Brunswick Centennial tables costing approximately \$1,200 each. They are brushed and vacuumed daily with a machine designed especially for the purpose.

Cues are sanded daily and fresh chalk supplied.

The tables are individually lighted in addition to regular room lighting. Other assets of the pool section include air-conditioning and asphalt flooring.

Seven tables are provided in the ping-pong room for table-tennis enthusiasts. Paddles and balls are available to competitors at a rate of 15 cents an hour.

## Louis Bellisimo Directs Games In SU Basement

By Jack Faust

The "man to see" whenever anything goes wrong in the Student Union recreation area is genial Louis Bellisimo, the short, dark-haired director of the section.

There was a time when Bellisimo used to bowl 100 games a week, but the job of organizing and supervising the SU basement hasn't allowed him to bowl that much since he came to the University.

Bellisimo was born 43 years ago in Johnsonburg, Pa., but grew up in Los Angeles. He bowled there for 22 years, during which time he gained prominence in bowling circles and became friends with such world-famed pin-busters as Ned Day and Andy Varipapa.

During his lengthy career, Bellisimo has rolled four "300" games, and regularly averaged over 200. When asked about the present state of his game, he said, "A 200 average requires the bowler to roll at least 10 games a day. I'm just now getting back in shape."

Bellisimo considers the most amusing experience he has had at the SU to be the complaint of a novice bowler. When the young man loudly protested that the alleys weren't level, Lou had to reassure him that it was possible they weren't—but by no more than 1/25 of an inch.



—Courtesy The Oregonian  
**A FOUR-CHAIR barber shop** serves students in the Student Union basement. Leo Deffenbacher leased this center, after owning his own tonsorial parlor on the campus for 25 years.

## AS MODERN

as the

## BUILDING ITSELF



Furnished by

## MASON SUPPLY CO.

PORTLAND

OREGON

## Success to the Erb Memorial

We are happy to have had a part in your beautiful building in furnishing the ornamental aluminum and bronze doors, frames, rails, collets and grilles.

## OREGON BRASS WORKS

Portland, Oregon