

HAND DIPPED
Chocolates & Fudge
Made in Eugene
SUGAR PLUM
63 E. Broadway

LETS GO
TO
CABLES
(DRIVE IN)

HEILIG Dial 4-9311
October 20
"Devil's Doorway"
"Streets of San Francisco"

MAYFLOWER DIAL 5-1022
October 20
"No Sad Songs For Me"
"The Good Humor Man"

LANE Dial 4-0431
October 20
"Dillinger-Gangster"
Written in Bullets and Blood!!!

MC KENZIE Dial 7-2201
October 20
"Curtain Call At Cactus
Creek"
"Spy Hunt"

VARSITY Dial 7-3403
October 20
"Dillinger-Gangster"
Shocking Life Story!

CASCADE
Drive In Theatre
October 20
"Albuquerque"
"Tarzan and the Mermaids"

OREGON DAILY EMERALD

TODAY'S STAFF

Assistant Managing Editor:
Fred Vosper
Desk Editors: Lorna Larson,
Tom King, Bob Funk
Copy Desk: Barbara Rubin,
Mary Kelly, Louise Hohlitt, Judy
McLoughlin

NIGHT STAFF

Night Staff: Pat Word, Sue Rid-
dlebarger, Betty Brown, Jean
Bossardet, John Welcer, Phil Bet-
tens

**Green Costume
Section Planned**

Oregon's white-shirt section for
the St. Mary's game Saturday will
extend between the 40-yard lines.
Women will sit in the section left
of the 50-yard line when facing
the field and men will sit on the
right, Bob Brittain, chairman of
the section, said.

Order of the 'O' and Skull and
Dagger men will be reserving the
section for students participating
in the white-shirt section and will
assist them in finding seating in
the right order.

The following men's houses are
requested to supply the number of
rooters listed. They are to be
attired in green shirt, sweater, or
jackets, preferably dark green.

Sigma Alpha Epsilon, 31; Sig-
ma Phi Epsilon, 38; Alpha Tau
Omega, 45; Sigma Alpha Mu, 18;
and Chi Psi. The remaining 50
are to be supplied by the men's
dormitories. These men will form
a large green "U" on the white
field.

The various sororities have
agreed to supply the following
number of girls wearing dark
green sweaters, blouses or coats:

Chi Omega, 24; Alpha Omicron,
Pi, 19; Delta Delta Delta, 14; Alpha
Delta Pi, 10; Delta Gamma, 10;
Kappa Kappa Gamma, 14; Kappa
Alpha Theta, 10; Delta Zeta, 5;
and Alpha Gamma Delta, 9. Car-
son Hall is to supply approximat-
ely 100 more girls. The remainder
of the seats will be filled with
students wearing white.

Pi Phi - Kappa Tilt

(Continued from page one)

Bob "Call me King" Wilcox and
the captain is rough, tough Diane
"Gremlin" Goddard. This much
is for sure.

Here are the standings, for
background:

Team	W	L	T	Pct.
Kappa Krunchers	0	0	0	.000
Pi Phi Archers	0	0	0	.000

On this basis, we can rate the
game pretty much as a toss-up.
None of the players have any pre-
vious experience. This gets us no-
where, too. Neither team can be
expected to be familiar with the
rules. As a precaution, both sides
will be formally introduced to a
football before the game.

If weather conditions continue
as at present, both teams are ex-
pected to make very few passes
and stick to a running attack,
busting through the line and
things like that.

That's the daring prediction:
some say Kappas will win; some
say the Pi Phis will win; we agree;
whoever you bet on it's a poor
bet; act at once.

CLASSIFIED

FOR SALE—'49 Olds 98 Sedan-
ette. Car is exceptionally clean.
Only 9,000 miles. Call 4-5732. 21

WANTED—Ride to Astoria Fri-
day for two. Contact Norman
Deney ext. 386. 21

LOST—I dark brown notebook in
227 Friendly Wednesday. Find-
er call Carl Winklebleck. Phone
56797 for comfortable reward. 21

FOR SALE—1936 Ford coupe, R
& H, new tires, 27,000 miles
on engine, make offer. 2160-4
Patterson Dr., Amazon. 22

LOST—Brown jacket on campus.
Call Elmer Gentleman, Ext. 321.
Reward. 23

LOST—Black zipper notebook Sat-
urday. Call Harold Neufeld, Ext.
381. 23

FOR SALE—V. P. Exacta Reflex
camera. 2.8 Tessar perfect for
sports, scientific, portraits. Rm.
208 Deady Hall (Biology). 22

EMERALD ADS BRING RESULTS

**PLASTIC BOOK
BAGS**

For Wet Weather

The "Co-op" has just received a new
shipment of rain Protectors—all sizes

20c to \$1.00

U of O CO-OP STORE

**HERE ARE A COUPLE PRICES YOU
CAN'T BEAT**

1. Whiskerino Dance (per couple).....\$1.75
2. Smorgasbord dinner\$1.75
 - all you want to eat
 - imported and domestic dishes
 - your coffee cup is never empty
—and dessert

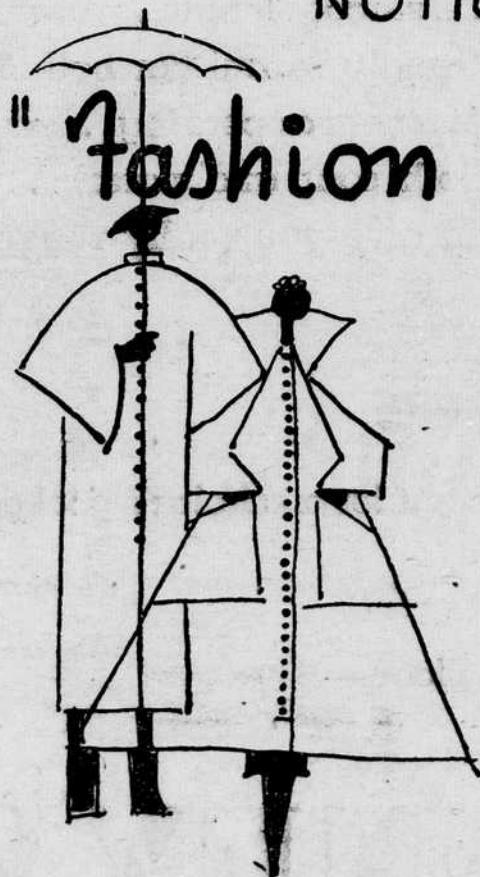
**FRATERNAL BANQUETS ARE OUR
SPECIALTY**

Sweden House Smörgasbord

Hours:
Weekdays 5-9
Sunday 2-8
Closed Monday

Owned and operated by
Mr. and Mrs. John Lusk

NOTICE... THIS SPACE RESERVED FOR



"Fashion Forecast From Russell's"

PREMIER CASHMERE SWEATERS

knit on super-fine needles, of the finest hand picked im-
ported cashmere yarns individually full-fashioned to
your size by the most costly workmanship, and they fair-
ly glow with color. Lavendar, pink, yellow, blue, white,
toast, jade, ginger, dark green, cherry, school red, grey,
navy black, aqua and beige.

S. S. Pullover 13.95 Cardigan 16.95 L. S. Pullover 14.95