

Two Enthusiaits Take Roles In Theater Play, 'The Girl'

By NORMAN ANDERSON

Two girls who really like the roles they are playing will contribute enthusiasm to the Belasco and Fyles melodrama, "The Girl I Left Behind Me", opening Friday night in the University Theater for a five day run. The show, directed by Horace W. Robinson, will run May 26, 27, 30, 31 and June 1. Tickets are \$1.

Typing herself as a natural for the part, Elmarie Wendel considers Lucy the best role she's ever played in a varied theatrical career which also includes dancing.

"She seems closer to my own personality. When she's happy, she's happy. She never gets down in the dumps," related Miss Wendel, vividly illustrating the role with gestures and expression during a rehearsal of "The Girl."

Miss Wendel describes Lucy as a young girl at Ft. Kennion, army post in Montana during the 1890's, who decides she wants a man and sets out to get him.

"And this is a typical melodrama with a happy ending. She gets him."

"The Girl" is the second University Theater production Miss Wendel has appeared in this season. She had a minor role in "The Warrior's Husband" in April. She also played in "Fun Circle," one of the one-acts presented at the Experimental Theater production several weeks ago.

Miss Wendel is no newcomer to the stage. She has appeared often in productions of Eugene's Very Little Theater and was recently seen as Galatea in "Pygmalion and Galatea." She also played in "Craig's Wife" with the VLT.

A sophomore, Miss Wendel dropped out of school last year and worked in Portland, where she engaged in theatrical activities at Portland University. She did work on "The Drunkard," "The Male Animal," and "The Hasty Heart," among others.

Miss Wendel has an interest in choreography (dance routines) and radio. A little experience adds to both interests. She did the choreography for "Fun Circle," and has appeared with Portland's KGW, as well as the University radio.

A career in the drama field is the personable young actress's ambition, but just where she's not sure. "I'll just go into acting, stage or choreography. I'm interested enough even to try Broadway."



Marlys Sinclair



Elmarie Wendel

"I was only Fairy with wings," Marlys Sinclair, Wilbur's Ann in "The Girl I Left Behind Me," describes herself in her premiere performance at Oregon in "A Midsummer Night's Dream."

But that was only a small role, points out Miss Sinclair, who plays a featured comedy role in the Belasco and Fyles melodrama opening Friday night.

With a voice perfectly suited for the role, Miss Sinclair portrays a young girl of 16 who often makes mistakes and says the wrong things. "But," says Miss Sinclair, "she's young enough that people expect her to and aren't upset."

As Wilbur's Ann, Miss Sinclair takes a "yen" to a young doctor who arrives at Fort Kennion. Eventually, in the course of the play, Ann gets her doctor.

Miss Sinclair is playing her first University Theater role. A major in drama, she started college as an art major. She says she's always been interested in the theater, but didn't really get started in it until she attended summer sessions at Pacific University.

In "The Girl," Miss Sinclair enjoys playing the last act the best. She thinks that's the place where the feeling of the melodrama is most carried out by Ann. "First she's eral unhappy, and then she's real happy."

But the scene Miss Sinclair worries most about is trying to make her giggle appear natural. "I want to giggle and I can giggle, but it's the kind of laugh and how long it lasts that I find difficult to do."

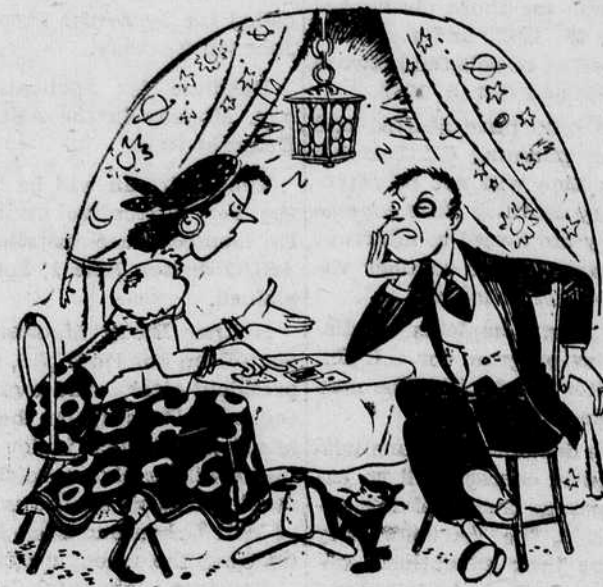
Miss Sinclair's home is Lebanon.

Pre-Mortar Board

(Continued from page one) committee, no preliminary inter-pump. The coeds took the defensive and the war was on. All excitement ended with activity women of the campus going home with straight hair and faded sweaters.

Chairmanship Interviews

(Continued from page one) dents who petitioned and have not been contacted for interviewing should appear before their respective subcommittee today at the designated time and place. Final selections will be made known Thursday afternoon.



Why go to a fortune-teller
Read it in the Emerald

Subscribe now

\$2.00 per term

Oregon Daily
EMERALD

1950 CENSUS

HAVE YOU BEEN COUNTED?

The Census is nearing completion. If you have not been counted here or anywhere else- please fill out the form below and mail it immediately to the U. S. Census District Office at the address shown.

My address on April 1, 1950 was:

House Number and Street Apt. No.....
(Or description of location)

City, town, village..... State.....

Name of each person whose usual place of residence was in this household on April 1, 1950	Relationship of this person to the head of the household, such as head, wife, son, roomer, etc.	Sex M or F	Color or Race	Age at Last Birthday

CUT OUT THIS FORM AND MAIL TO:

DISTRICT OFFICE
BUREAU OF THE CENSUS

ROOM 205, ARMORY
EUGENE, OREGON

Dorm Council Favors Discipline for TNEs

Members of the Inter-dormitory Council Tuesday went on record as favoring more severe punishment for University students found to be members of Theta Nu Epsilon, illegal secret political organization.

At a meeting last night, the IDC recommended that support should be given to the United Students Association in exposing the list of TNE members, now in the hands of University officials.

IDC President Frank Fairly reported that the Council recommended independent action if the USA does not accept IDC support in exposing names.

The Council does not favor expulsion for all proven TNE members, Fairly explained. It does believe more severe punishment than is now planned should be given.

The 25 admitted members of TNE have been placed on probation for their remaining University careers.

For speedy service, use Emerald classifieds.

Classified ads bring quick results.

Emerald classifieds get results.