

WSSF Campus Drive Starts Today; First Chinaware in U.S. Made by Lenox, Inc.



Some 2000 refugees are enrolled in European universities, while the U.N. International Refugee Organization seeks homes for them. At the left, refugees use a basement library in a bombed-out building. At the right, a student cooks in his tiny bedroom-study-living room.

Oregon's part in helping such students as shown above is brought closer home this week during the official World Student Fund drive, which starts today.

Based on the principles of more fortunate students assisting their needy contemporaries, WSSF, a part of World Student Relief, is the American agency designed primarily for the betterment of uni-

versity education abroad.

Donations from students and faculty in the United States are channelled through World Student Relief headquarters in Geneva, Switzerland. A noteworthy factor in WSR is the low cost of administration, with many donating their services or doing double duty in some other capacity as well as representing WSR or WSSF.

Distribution of aid is determined by NEED alone. Contributions come from 18 nations throughout the world and go to students in Europe, Southeast Asia, and China. Five main fields of help are aid in food, providing shelter, providing medical care, books and equipment, and aid through study grants.

Total drive goal for the United States this year is \$600,000.

Social Calendar

Following is a calendar of social events for spring term as released by the office of student affairs.

April

- 3-7 WSSF drive.
- 4 Assembly, Dr. Sigmund Spaeth, "Music for Fun," McArthur Court.
- 7 All Campus Vodvil, McArthur Court.
- 8 Beaux Arts Ball, Gerlinger Annex.
- Men's House Dances: Phi Gamma Delta, Lambda Chi Alpha, Campbell Club, McChesney Hall, Phi Sigma Kappa, Phi Kappa Sigma, Theta Chi.
- 9 Easter Sunrise Services, McArthur Court.
- 14 WAA Co-Recreation Nite, Gerlinger.
- 14-16 AWS Weekend, "Duck Preview."
- 15 Concert, Wagner Opera Co., "Cavaleria Rusticana" and "Il Paliacchi," McArthur Court
- 17 Concert, Danish Dancers," McArthur Court.
- 21-22-27-28-29 University Theater production, "Martha."
- 22 Frosh Glee.
- 23 Faculty Party, Gerlinger Annex.
- Concert, Joseph Szigetti, McArthur Court.
- 24 Concert, Eugene Gleemen, McArthur Court.
- 29 House Dances: Sigma Alpha Mu, Delta Tau Delta, Sherry

- Ross Hall, Alpha Tau Omega, Nestor Hall, Pi Kappa Phi, Stitzer Hall, Chi Psi, Sigma Chi, Kappa Sigma, Tau Kappa Epsilon.

- 30 Junior-Senior Women's Breakfast.

May

- 6 House Dances: Alpha Chi Omega, Delta Delta Delta, Alpha Phi, Alpha Delta Pi, Pi Beta Phi, Delta Gamma, Chi Omega, Rebec House, Delta Zeta, Alpha Xi Delta, Zeta Tau Alpha, Kappa Kappa Gamma.
- 7 American Association of University Women coffee hour
- 12-14 Junior Weekend.
- 13 Junior Prom.
- Oregon Mother's Tea for visiting mothers.
- 17-18 Orchesis concert.
- 19 Faculty Party, Gerlinger.
- 20 House Dances: Phi Delta Theta, Delta Upsilon, Phi Kappa Psi, Sigma Nu, Beta Theta Pi, Sigma Phi Epsilon.
- 22 Women's Choral Club concert.
- 27 Mortar Board Ball, McArthur Court.
- 30 Memorial Day, no classes.
- 31 University Theater production, "The Girl I Left Behind Me."

June

- 2 Closed period.
- 5-9 Exams.
- 10 Alumni Day.
- 11 Baccalaureate.
- Commencement.

Panhel to Sell Apples

Apples will be sold today and Tuesday in the Co-op by Junior Panhellenic. The apples will cost five cents each.

This is the second project sponsored by Junior Panhellenic to add to the organization's treasury. Profits made from the apple sale will be used by the Junior Panhellenic to finance future projects this term.

day gifts. By breaking away completely from the European style in design, Lenox was further able to gain a bigger share of the American market. One of the company's designers, introduced a new style in china that was generally called modern. It was clean and simple of line in contrast to the elaborate and often rococo style that had been popular in Europe for years.

This modern style, particularly the severe, unencumbered motifs against a white background, soon attracted attention and by the late 1930's, the Lenox trademark was on perhaps one of every four pieces of chinaware purchased by Americans.

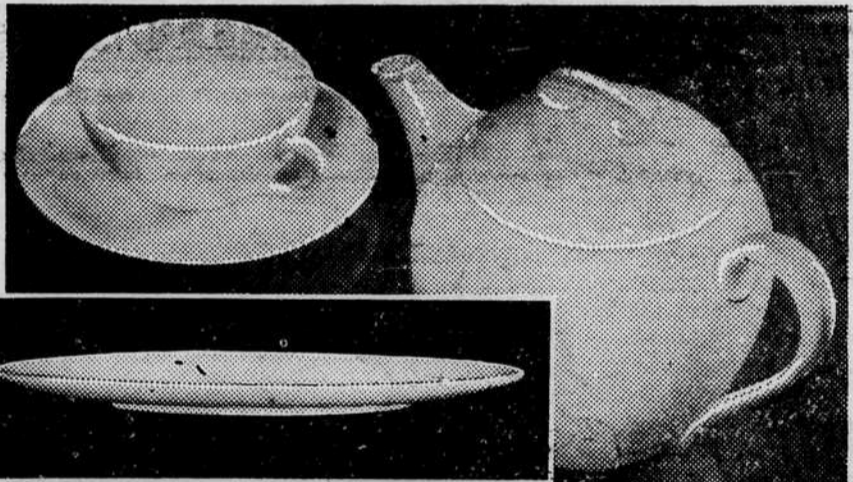
Since the war, when it became more difficult to get European ware, Lenox has expanded its entire line. Lenox, although retaining the old principle of the potter's wheel, has adapted its Trenton plant to American production methods, enabling it to produce several times as many pieces as European competitors.

Torch Honor Group To Tour Campus

Visiting on the University campus Friday will be 20 members of the Torch Honor Society, Wahkiakium High School, Cathlamet, Wash.

The students have chosen to visit the University for their annual educational trip. While here they will be taken on a tour of the campus, attend a typical class, and see new facilities and buildings.

WSSF meets relief needs and builds cultural ties among university centers of the world.



THE BEST IN MODERN!

Coupe BY LENOX

The original and the loveliest modern shape in fine china... created and made exclusively by the world-famous ceramic artists of Lenox. Exquisite simplicity of line, perfection of craftsmanship, and rare translucent beauty form a service of great distinction. And of course, the same fine china as in the official White House service, the china created for the Metropolitan Museum of Art, and the many other famous services made by Lenox. Dinner, salad, and butter plates, teacup and saucer, \$1225



HOFFMAN'S ... Jewelers ...

Broadway and Willamette EUGENE, ORE.

LENOX CHINA

AMERICA'S WORLD-FAMOUS FINE CHINA

Your chance to see

NEW BRITISH BOOKS

on Monday, April 3rd.

The British Book Centre's Bookmobile will be parked at the Library Monday morning between 10:30 and 12:00 o'clock, and at the shipping entrance of the Co-op during the afternoon, with its display of the best current books of English publishers. Orders will be taken if you should care to purchase... but at any rate, come to look!