

'Rock' Opening Shows Skill

(Continued from page one)

lusioned by life but fascinated by the prospects of living in a world of hope.

Ken Neal as Captain Joshua forcibly takes things in hand with vigor and capability when he is on stage. Bob Morton is particularly convincing as the Cockney worker who realizes his dreams will never come true.

Biggest laughs of the evening grew from the characterization of Flanning, the lighthouse inspector, played by Robert Peterson. Peterson has a flair for broad comedy and knows how to play a laugh for all it's worth; and sometimes for more than it's worth.

Harold Smith as Streeter had the difficult task of opening the

show and closing it. His first act argument with Van Boskirk lacked the fire it seems it should have had; but the affection and respect between the two men was adequately developed.

Others in the play, equally capable in their smaller roles, were Joan Landman as Anne Marie, Faber DeChaine as Dr. Kurtz, and Wayne Wagner as Nonny. Robert Metz and Donn Doak completed the cast.

Good Stage Effects

The one-set interior of the lighthouse was effective in setting the mood for the drama; and the superb lighting was more evidence of the physical facilities of the new theater.

Mrs. Seybolt's meticulous di-

recting resulted in a nicely-staged play, with the cast assuming natural stage positions which frequently created a beautiful picture.

Something went haywire near the end of the second act, however, and it was necessary for Ken Neal to spend a good portion of the time trying to get out from behind another actor. It was interesting to see the skillful maneuvering of Neal, though, and see the number and various types of motivations he manufactured to move into the clear.

Ike Eisenhower says he doesn't want to be drafted for president by artificial methods, but most candidates need an oxygen tent and a pulmotor.

Kenton Concert

(Continued from page one)

ketball games. They will face the orchestra. Reserve seats will be in the first eight rows on the floor, and the C and D sections in the balcony, and the first seven rows in the B and E sections.

The Kenton Concert is part of the Student Union Board program to bring new and different attractions to the campus. First was the Nappy Lamare performance here last term, but the Kenton Concert vastly overshadows even that.

Previous to now, events of this nature were never brought to Oregon. The board is sponsoring them in the belief that the student body desires them.

Tickets are on sale at the Co-op, McArthur Court, and the Appliance Center. General admission is \$1.20 and reserve seats \$1.80.

Red Cross Petitions Requested Today

Petitions for the annual Red Cross Fund drive may be turned in today to Art Ross, at the Kappa Sigma house, or Donna Mary Brennan, at the Kappa Alpha Theta house.

The drive, which is scheduled for Feb. 23-28, will need chairmen of these committees:

Speakers, publicity, promotion, co-op booth, off-campus collections, and student collection.

Both men and women may apply for chairmanships, according to the co-chairmen, Miss Brennan and Ross.

One difference between Congress and us is that Congress passes the income tax and we don't dare.

At GONZAGA and Colleges

and Universities throughout

the country CHESTERFIELD is

the largest-selling cigarette.*

BING CROSBY

Famous Gonzaga alumnus, says:

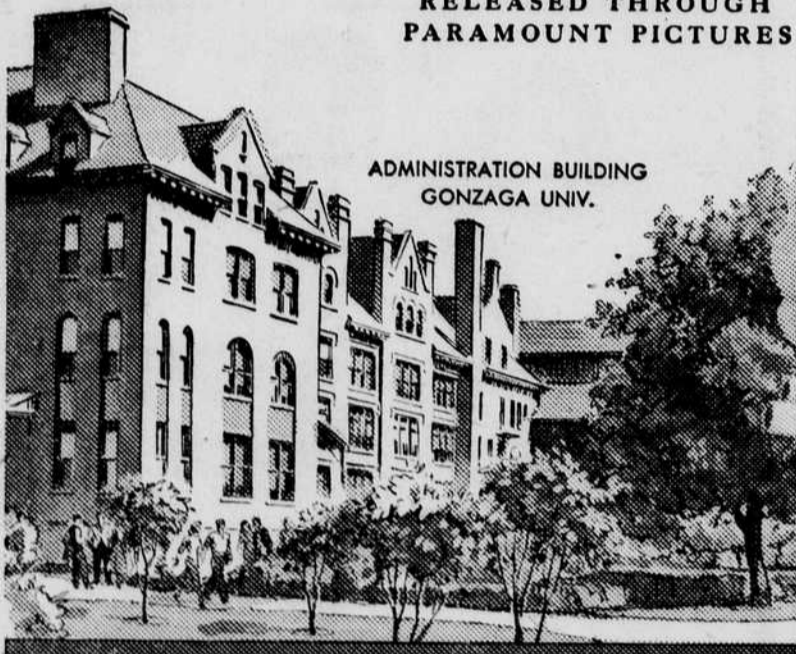
"Smoke MY cigarette.
MILDER Chesterfields."

Bing Crosby

STARRING IN

"RIDING HIGH"

A FRANK CAPRA PRODUCTION
RELEASED THROUGH
PARAMOUNT PICTURES



ADMINISTRATION BUILDING
GONZAGA UNIV.



Always Buy CHESTERFIELD

They're MILDER! They're TOPS! - IN AMERICA'S COLLEGES
WITH THE TOP MEN IN SPORTS
WITH THE HOLLYWOOD STARS

*BY RECENT NATIONAL SURVEY

Hear CHESTERFIELD'S
Great New BING CROSBY
SHOW Every Wednesday
over the entire CBS Net-
work—9:30 P.M. E. S. T.—
8:30 P.M. C.S.T.—7:30 P.M.
M.S.T.—6:30 P.M. P.S.T.