

Dream Girl Eliminations to Start; Fireside Due for Semi-finalists

Home Waves Take

Portland Fans View

(Continued from page five)
 les Don Coleman and Pete Fusi are rated as highly as a pair. But despite the praise given to his forward wall, Munn still remembers what the Orange attack did to these same men last season.
 To counter Oregon State's of-

fense, Biggie will place his attack on the shoulders of Chandnois, Fullback Frank Waters, Passing Quarterback Al Dorow and Left Half Everett Grandelius. Also slated to ramble through the Orange hair is Quarterback Gene Glick, the man that Notre Dame's Frank Leahy said gave them the most trouble last year.

Eliminations for the Dream Girl of Pi Kappa Alpha will start Nov. 14 when members will narrow their list to 25 semi-finalists.

These semi-finalists will be invited to a fireside next week.

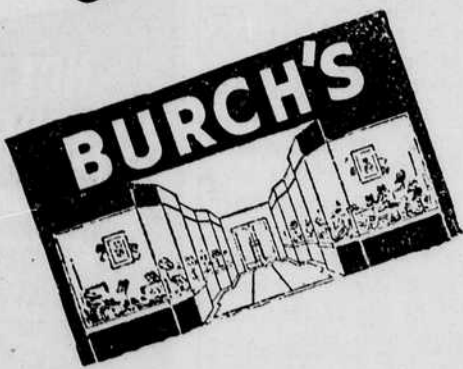
Over a three-week period, two women chosen as entrants by each women's living organization have been introduced to fraternity mem-

bers.
 Next eliminations will cut the list to five finalists for the crown. These five will be interviewed on the KASH radio program "Mimi and Bob." Pictures will be on display in the Co-op and College Side on the campus, and in the Bu-Tik and Arbuckle's shoe store downtown.

(Continued from page seven)
 save a little money. Your wave kit will tell you more about it, with every detail.

If you are thinking about a home permanent seriously, though, Thanksgiving is not too far away. The four day holiday might give you the right chance to come back to school with a real head of crowning glory.

PATRONIZE THE EMERALD ADVERTISERS



OREGON EMERALD

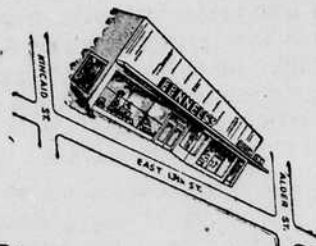
The Emerald Advertisers are your friends—they are anxious to serve your every need. They deserve your patronage.

Your Emerald brings to you, all of the best deals from Eugene's leading business establishments. Read the Emerald ads and SAVE.



REMEMBER

It pays to patronize Emerald Advertisers.



Eugene's Flower Home
 13th & PATTERSON STS.
 EUGENE, OREGON