

# Direction Class to Present Two Comedies Monday

Two one-act comedies, will be presented by the class in direction of school and community plays next Monday evening at 7:30 in the Guild theater.

No admission will be charged for the plays. First to be presented is "Her Lady's Lace," supporting cast of Ruth Millard, Margaret Holm, Lou McCumsey, and Virginia Boots. The first is under the direction of Ken Neal and the second is directed by Bill Johnson, both University students.

Starring in "Her Lady's Lace" are Bob Phebus and Mary Jane Martyn. Others in the cast are Greta Skillern and John Sullivan.

"Child Wonder" stars Bob Henderson and Janet Stockton with a

## Spaid Accepts Teaching Position

Stanley Spaid, graduate assistant of history has accepted the po-

sition of assistant professor in the history department at Humboldt State College, California.

Spaid received his bachelor of science and masters degree at the University of Idaho. He will finish

the work on his doctorate this summer term.

A professor who comes in late is different; in fact, he is in a class by himself.

## Campus Calendar

(Notices for Campus Calendar should be turned in, in typewritten form, to the Emerald News Editor's office by 3 p.m. of the day preceding publication. Notices will not be accepted on Saturdays or Sundays.)

- 5:30—Asklepiads initiation—Alumnae hall on second floor of Gerlinger. Banquet follows at 7.
- 7:00—recorded concert—Friendly house.
- 7:30—Friday 13th party—Wesley house.
- 7:45—"Crown of Stars" play by th Student Foreign Missions fellowship from Pacific college—Gerlinger annex.
- 8:00—Lutheran Student association box social. Boxes will be sold in Chinese auction—Luther house.
- 8:00—Dr. Wyman will lead discussion on "My Personal Philosophy"—Friendly house.
- 9:00—Cosmopolitan party—Friendly house.
- 7:30 Monday—Alpha Delta Sigma will present Barney Twiford, advertising director of the Oregonian, with a 90 minute movie showing plan for pre-testing advertising—207 Chapman.

### Today's Staff

Vic Fryer, news editor; Bill Holman, Gretchen Grondahl, Don King, copyeditors.

Mary Hall, night editor; Rod Smith, Yvonne Lefebvre, Lois Williams, Bill Holman, night staff.

### Emerald Correction

The name of W. C. Ballaine was incorrectly spelled in yesterday's Emerald. Ballaine, professor of business administration, was elected a member of the advisory council at Wednesday's faculty meeting.

# Roblee

Just the smart Spring tonic your wardrobe needs...

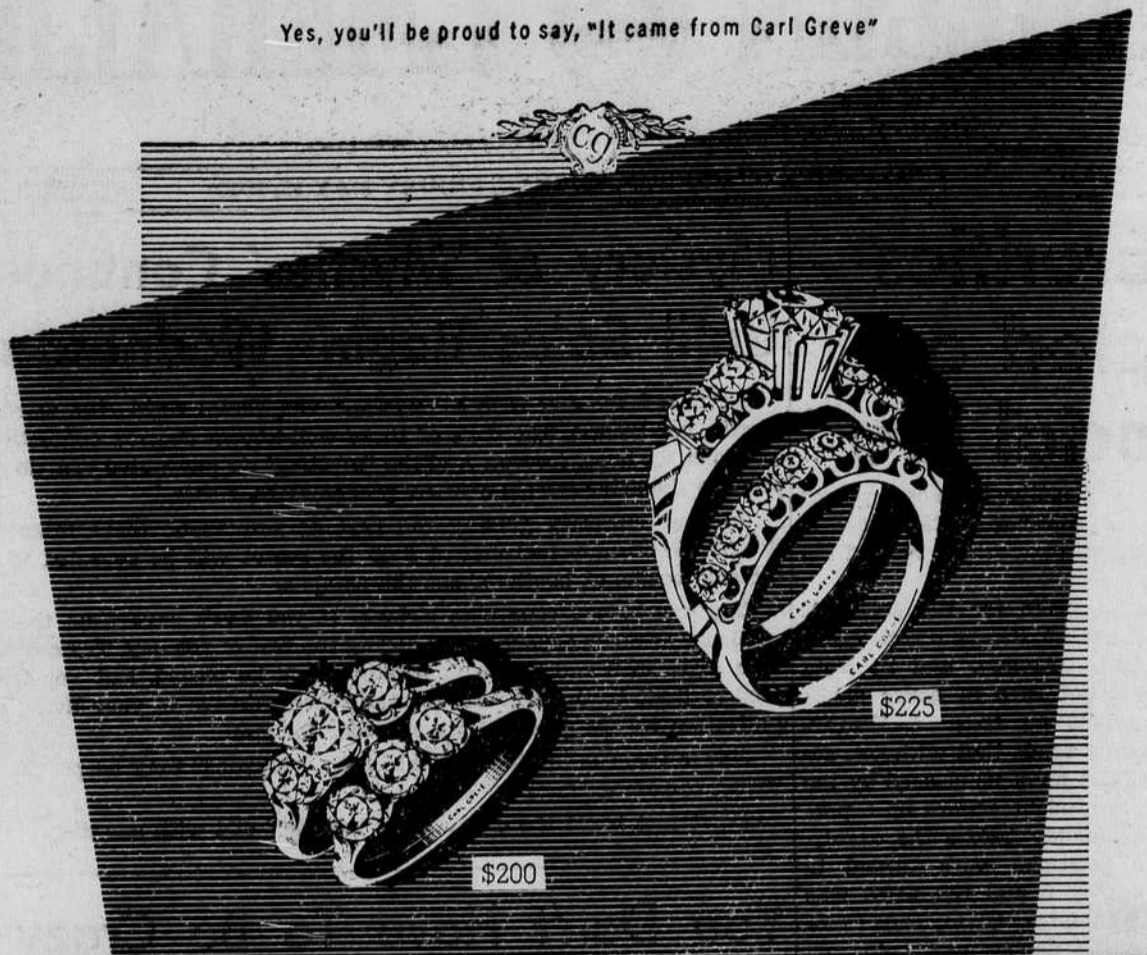


Shoes worn and weary from winter, wear and weather, men? Could be you need the new feel afoot of this Roblee blucher raglan. It's a honey... brown grain leather, stitch tip, style-high triple sole. Wonderful buy, wonderful pace-setter to spark up new spring clothes.

**ARBUCKLE'S**

Willamette at Tenth

Yes, you'll be proud to say, "It came from Carl Greve"



*A thrifty design can have a spendthrift look...*



Prices Incl. Fed. Tax

Budget Accounts Invited  
Mail Orders Filled

**CARL GREVE**  
jeweler

Portland

731 S. W. MORRISON Oregon