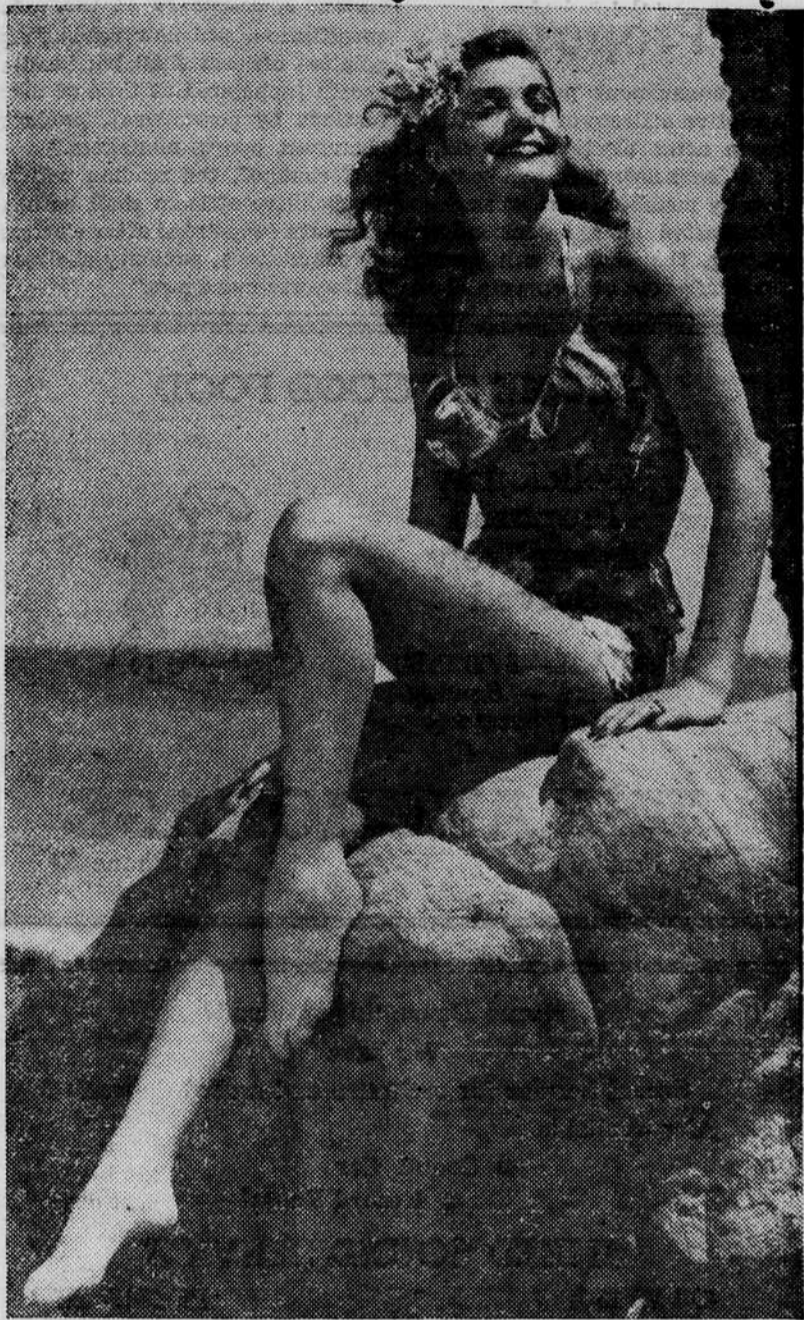


## A Lost Horizon



**MISS CHEESECAKE**, the girl voted most likely to be wearing a fur coat today. Spring weather and scenic suntanning will be discontinued until the coming of the rains. The weatherman says rain and slightly chillier weather is in store for today.

### Baby Bawls; Pop Spits Out Molars

**PORTLAND, March 1—(AP)** When William Massie's baby cried this morning, he shook his wife's shoulder. He got his teeth knocked out.

It was a glass water pitcher that hit him. Mrs. Massie told police she couldn't remember swinging the pitcher.

Massie meanwhile went to the hospital with two teeth knocked down his gullet and a sliver of glass that severed a muscle in his right arm.

Want a smart spring hat to wear with your new suit?

TO FIND WHAT YOU NEED,  
SHOP AT . . .

## BONNET NOOK

921 Willamette

Dine in a distinctive atmosphere

With the assurance that you are being served the best of foods prepared by the finest chefs.

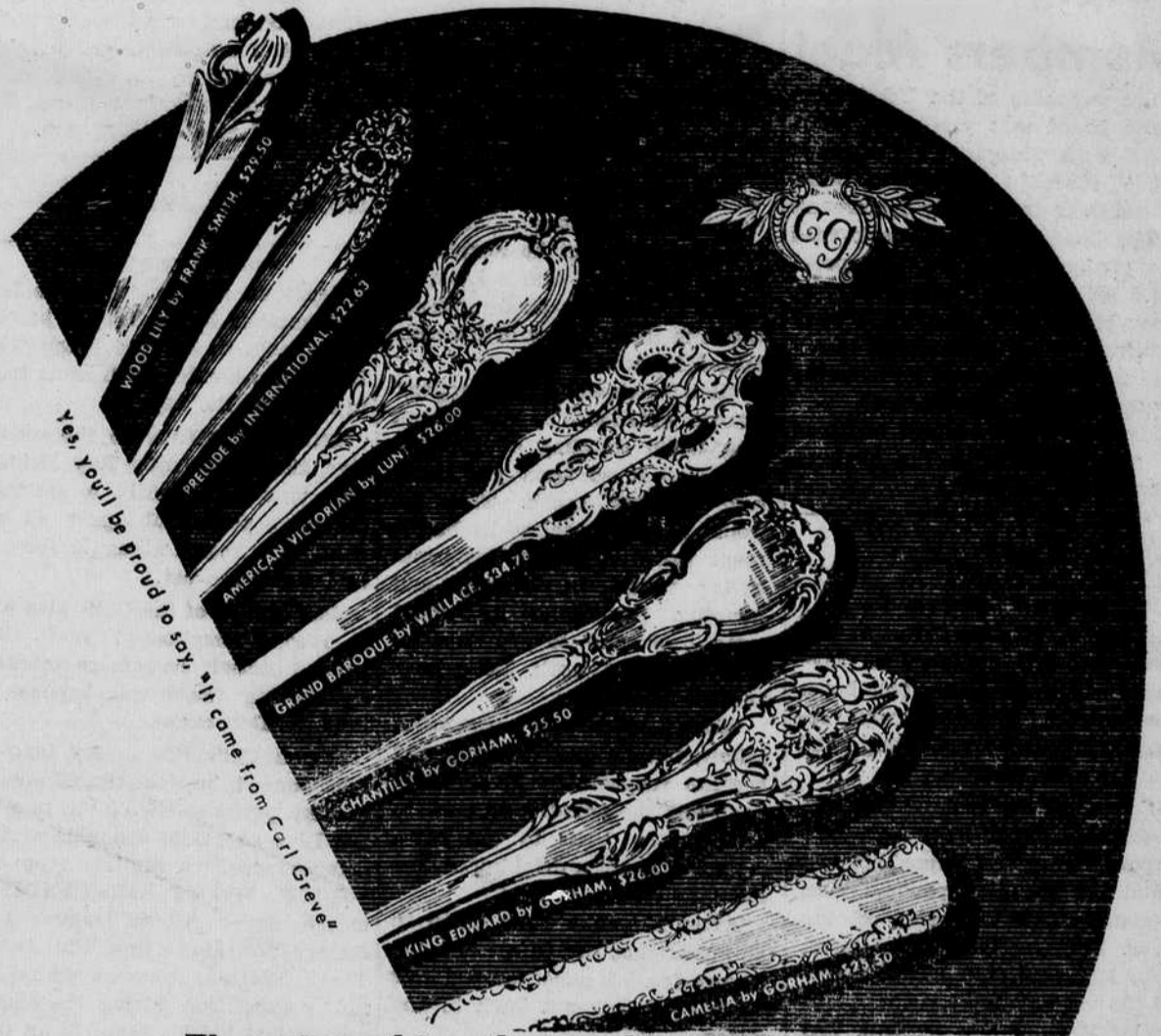


**CLARK'S TOWN HOUSE**  
FOR DISTINCTIVE DINING

1811 Pac. Hwy. N.

Ph. 4024—W

## CARL GREVE — JEWELER . . . PORTLAND



There is nothing that is cherished so much as

## Lovely STERLING

—and at Carl Greve you may choose from over 100 patterns . . . one of the largest showings of STERLING on the Pacific Coast.

### Special Registry Service

Whenever a selection of Sterling is made, the pattern, the pieces and the number of pieces are registered under your name. This service has proven helpful to those who want to make a surprise gift and not duplicate the pieces in a place setting.

Prices quoted are for a 6-piece place setting which consists of a knife — \$4.00, fork — \$4.50, spoon — \$3.00, cream soup — \$4.00, salad fork — and butter spreader — \$3.00 making a total of \$22.50 per place setting.

We are proud of the fact that many U of O co-eds have chosen their Sterling at Carl Greve. Many have started with a place setting or just a single piece, then have had the fun of adding to it to complete the service. Have you started yours yet? You are invited to examine the lovely patterns from all the leading American silversmiths.



**CARL GREVE**  
jeweler  
731 S. W. MORRISON  
PORTLAND

MAIL ORDERS FILLED • BUDGET ACCOUNTS INVITED