

Pledges to Live In Dorms

(Continued from page one)

3. Freshmen will face fewer problems requiring adjustment at the beginning of their University careers. When living in, freshmen must not only form new study habits, but also conform to fraternity requirements:

4. The annual rush week housing mixup will be eliminated. A freshman will not feel forced to pledge a house in which he feels little interest simply to assure himself of a place to stay.

5. Dormitories and houses can be operated on a more businesslike basis: a full house will not be dependent on rush week alone.

6. More serious-minded juniors and seniors will live in the house.

This will improve study conditions and result in greater maturity and stability.

7. The resulting raising of quotas will mean a higher percentage of fraternity and sorority membership in the student body. This will lead to better support.

8. Dormitories will find it necessary to put into practice a better counselling program, and fraternities will find better management necessary.

Disadvantages Outlined

"The program also has its disadvantages," DuShane admitted.

"An earlier deadline will be necessary for dormitory cancellations. Actives will have to inform their organizations in the spring whether

they plan to return for the next school year. Freshmen will not be available at all hours for pledge duties; they may only go to the houses at scheduled times for scheduled chores.

"The latter is a not altogether unmitigated disadvantage," DuShane indicated, at least from the point of the freshman.

"We are determined," he concluded, "that this will operate to the strengthening and improvement of the fraternity-sorority system, which we support. We will do everything we can to help the fraternities and sororities over this period of transition."

With 99 political parties, Italy is worse off than this country, which doesn't know what to do with three.

WANTED BY THE CO-OP

The following people to come in and claim their patronage refund checks for last year:

William L. Marker
Estella M. Allen
Elgeon L. Johnson
Betty Blanchard
Wayne L. Ford

"U of O Co-op"

CHESTERFIELD IS BUILDING ANOTHER FACTORY

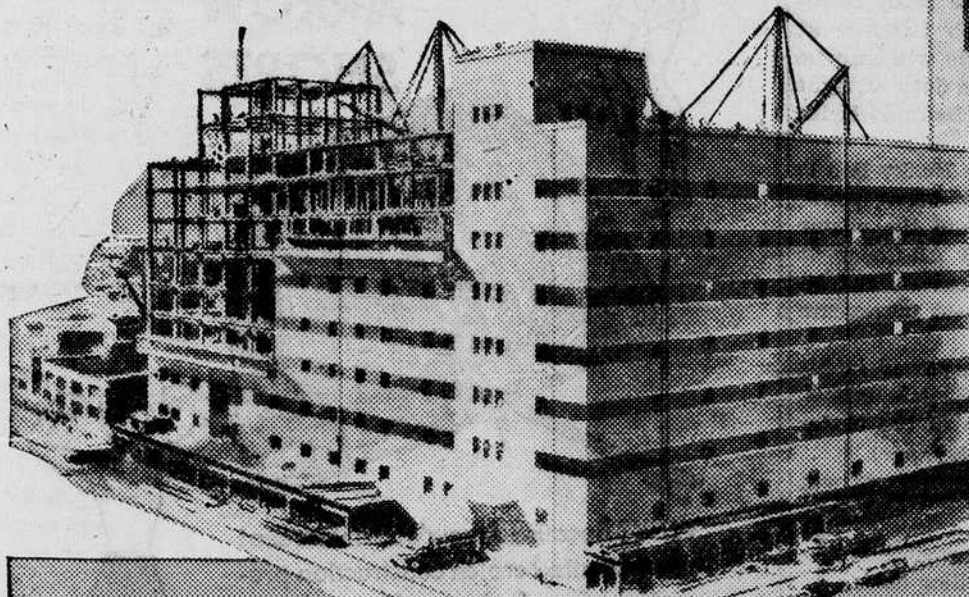
BECAUSE ALL OVER AMERICA MORE MILLIONS
OF SMOKERS ARE ASKING FOR

The Milder Cigarette

Soon our newest factory will be taking its place in the Chesterfield sky line in Durham, N. C., where the Chesterfield factory group is already "A city within a city."

With the addition of this modern factory, efficient in every way, Chesterfield will continue to keep smokers from coast to coast well supplied with the cigarette that is—

SO MILD THEY SATISFY MILLIONS
SO MILD THEY'LL SATISFY YOU—



A *lways* **B** *uy* **C** **CHESTERFIELD**

MAKE YOURS THE MILDER CIGARETTE... *They Satisfy*