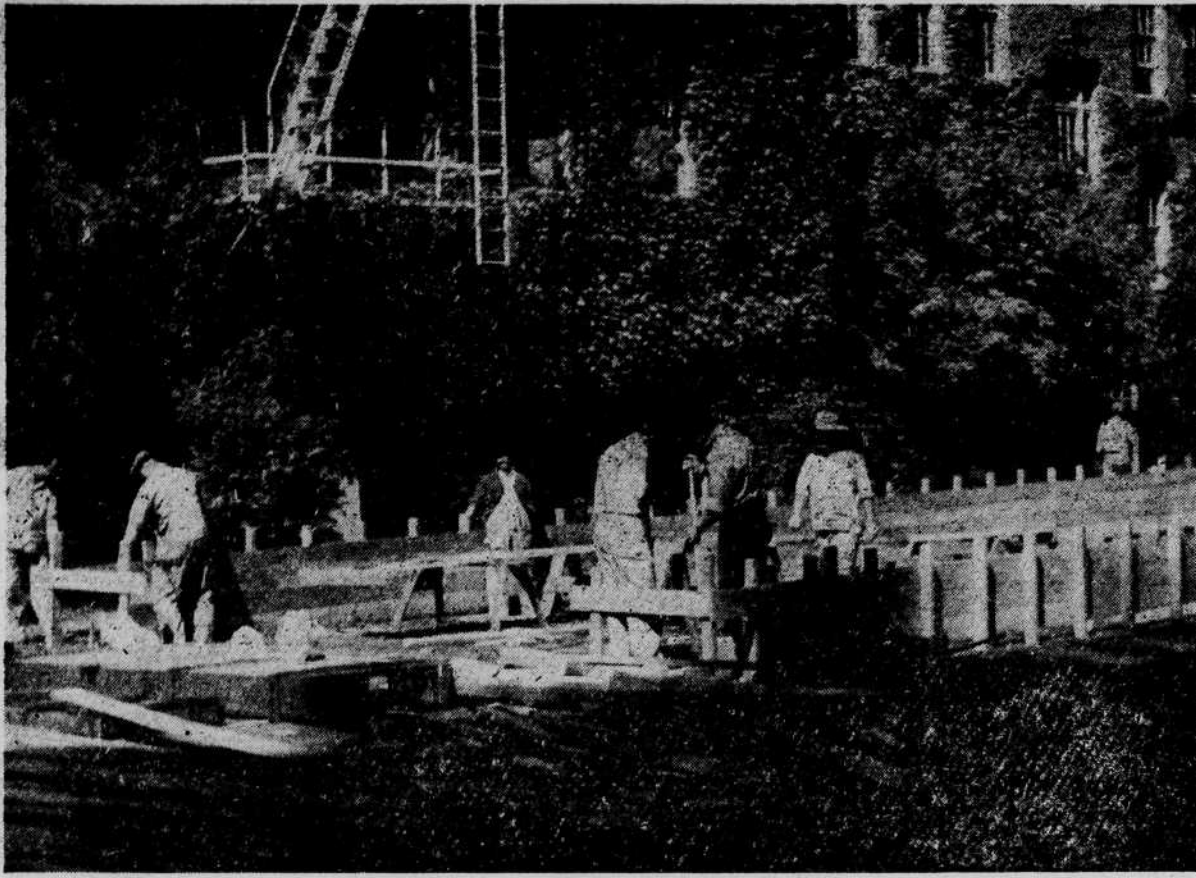


# Emerald 'Shack' Bows to Progress



**MAKING CHANGES**

Workmen (above) lay foundations for a chemistry Quonset hut between McClure and Friendly halls, while others (right) remove a tree near the journalism building to make way for that new Emerald Shack.



## Editor States Emerald Plan For the Year

Thorough investigation of campus problems, and detailed articles about them, will be a feature of next year's Emerald, according to Bob Frazier, 1947-1948 editor of the college daily.

Frazier says he hopes to line up a crew of competent "special writers" to do detailed reporting and writing jobs on problems too large and too involved to be covered by the regular reporting staff. These articles will appear from time to time in the daily, or may appear in serial form, Frazier said.

In getting this kind of campus coverage Frazier said he hopes to use upper division journalism students, some of them with earlier Emerald experience, who do not have time to carry out the confining duties of regular beat reporters.

### Letters Planned

Another feature of the new Emerald will be the addition of "Letters from Abroad," of the type run in the New Yorker. The new editor has already made arrangements with several recent graduates to write monthly letters from England, France, Japan, and Korea. He is interested in building up this corps of graduate writers, and wishes to learn of other alumni abroad who could write the Emerald.

The new editor also hopes to raise the standard of writing on the daily, and to give reporters freedom to break out of the confining journalistic style when their stories warrant it.

His right-hand man on the Emerald next year will be Bill Yates, now working on the Bend Bulletin, who will be managing editor. June Goetze and Bobolee Brophy will be news editors. Walt McKinney, last year's assistant managing editor, will be associate editor in charge of production.

## Ad Manager Tells of Plans For Fall Issues of Daily

Barbara Twiford, Emerald Advertising manager, has announced that staff appointments will be completed on the business side by October 1, a week and one-half after classes begin. Positions open include assistant day managers, office managers, layout, and contract executives.

Miss Twiford suggests that both new and returning students contact her after September 14, in the Emerald business office. Previous experience on the Emerald or in advertising is not necessary, although it is helpful.

New policies will give students greater opportunity to work with Eugene merchants, gain experience, and at the same time work in a highly recognized activity on the campus.

In previous years students have commented on the stuffing of the Emerald with advertising. This year, she hopes that contracts, both national and local, will permit the advertising staff to balance all issues, eliminating the similarity to a shopping guide. The elimination



**MISS TWIFORD**

of special issues during the year and the subsequent addition of seven regular papers will enable the business staff to follow such a policy, according to Bob Chapman, business manager.

## Quonset Hut Erected For Student Daily

"The Shack," home of the Oregon Daily Emerald for more than 24 years, will be swallowed up this fall by the expanding chemistry department. The offices of the daily will be moved into a Quonset hut.

The new "temporary" quarters for the Emerald will be just south of the journalism building, occupying a part of the faculty parking lot. The hut, 20 by 55 feet, will house news, editorial and business offices, but Emerald sports will remain in their old quarters, as night tenants in the school of journalism lab room.

## Dean Outlines Rushing Rules

Deadline for payment of rushes is August 23, Mrs. Goldia Wickham, dean of women, recently reminded freshman girls. The \$15 fee will not be accepted after that date.

Oregon residents will be accepted for rushing on a preparatory decile of 5 or above, or a grade point average of 2.2 on a minimum of 12 hours work the previous term. Out-of-state students will be accepted on a preparatory decile of 4 or above, or on a 2.75 grade point average.

Because of the housing shortage, priority pledging is limited to the number that will bring the house membership to the limit set by the University. The number of returning girls, according to figures turned in to Dean Wickham's office May 30, will probably limit rushes to 300 out-of-town girls and to 40 or 50 Eugene girls. September 7 to 13 is fall rush week.

Summer rushing was preceded by a Panhellenic tea in Portland July 9 where Mrs. Wickham spoke. Rush parties are limited in Portland and Salem to one large tea and three smaller

The daily moved into "The Shack" in the spring of 1923 after the present journalism building was constructed to replace the one which had burned the previous summer.

Details of the new structure, which is nearly completed, have been worked out by C. Ken Weidner, superintendent of the University physical plant, Dean George Turnbull of the school of journalism; Richard C. Williams, educational activities manager; and Bob Frazier, editor of next year's Emerald.

Two other Quonsets are being built this summer on the campus. One of them, just west of the new Shack, will house additional chemistry classrooms, while the other, south of Deady hall, will be used by the physics department.

In Eugene only two functions are allowed each house. In smaller towns summer rushing is preceded by the Panhellenic tea, and individual houses are limited to one small party. Guests at the small parties must not exceed 25. Summer rush period is July 13 to August 13.

**Sirôcco**  
perume

A siren scent with all the warmth of a southern sea.  
From \$2.25 plus tax

**LUCIEN LELONG**

**Tiffany-Davis**  
8th and Willamette