

## Y Issues Call For Petitions

Petitions for counselors for the YWCA sponsored Duckling and counselor project, designed to assist new students to the school next fall in becoming acquainted, may be turned in at any time at the YWCA bungalow by all interested women students, according to co-chairmen Virginia Dryden and Anne Woodworth.

The girls will be assigned names of prospective students to whom they will write arranging a meeting time soon after the beginning of fall term. The counselors will take their ducklings to Y sponsored parties and school functions for about the first six weeks of school.

Nancy Moran and Nancy Gleason, freshmen chairmen, have announced that a file will be kept at the YWCA for the purpose of keeping the names of those interested, handling mailing, and as a place where information can be passed between duckling and counselor.

### Officers Named

The project is largely being handled by the newly organized sophomore commission which is an outgrowth of this year's freshmen commissions.

New officers include Lucretia

## Article by Al English Published in Magazine

An article about the University school of music's May festival of contemporary music appears in the May issue of Northwest Background, a new monthly pocket-size magazine published in Portland. Written by Al English, Emerald writer and junior in history, the story is titled "Oregon Open a Door."

Prentiss, chairman; Zeta Sinclair, vice-chairman; Frances Baldwin, secretary; Mary Stadleman, entertainment; Carol Becker and Skippy Hawksworth, projects; Betty Jo Bledsoe, editor; Marge Wickinden, posters; Dorothy Orr, membership; and Mary Margaret Jones, telephone committee.

Bobbie Fulmer, vice president of the YWCA and in charge of the freshmen programs, has stated that she considered the duckling-counselor project one of the worthiest now in progress.

## Side Patter

(Continued from page two) jurisprudence took on the ATO first team, and behind his smoke ball thoroughly trounced the younger lads.

Coach Rosco Dick is confident of an easy victory, and is banking heavily on "Slugger" Granquist and her 54-ounce bat. Last year with two strikes on her . . . she pointed her bat toward Robinson's . . . and the ball hasn't been found yet. Kiss and Hug Dept.: The Sigma Chi stocks are in for another beating as Tom Dryden hung his cross on cute Pat Starling of the jolly Gamma Phi's . . . ditto with Dick Hazard and Donna Rankin. There was nothing left but the candy wrappers as Jo Kennedy announced her intention to merge with Jim Kern, an SAE from Corn Valley. This week's carton of Chesterfields goes to GammaPhoo Liz Gilmore with the beyootiful blonde locks. Some gals got it . . . others ain't, but Liz is 4-Oh in anyone's rating. Pick up your carton at the booby hatch with Bob Chapman's, Kit Wilhelm's, and my compliments. (It's too bad you don't smoke — give 'em away. The D.G.'s rang the bell again as Shirley Jones took Roy Nicolai's Chi Psi badge . . . also Joan Plier became a member of the Lodge by toting Harry Gleason's bookend. The following article is printed in its entirety from the back of an old

candy wrapper. To wit: B. G. Kocks is determined to be a hawk about the female situation on the campus. Latest routine is main dates with Gammaphoo Gene McPaerson with fill-ins with Pifi Wander Shaw. Miss Shaw is one of the better known campus sports . . . the question arises who will get top billing next week? . . . that Les Brown deal is a whizzer. Drop down to the opium den today and ask Jolly John all about his fishing trip . . . please do not go unarmed. See you on the late shift Thursday. . . pd. adv.

Fraternity and Sorority Stationery Crested or Greek Letter Letterheads

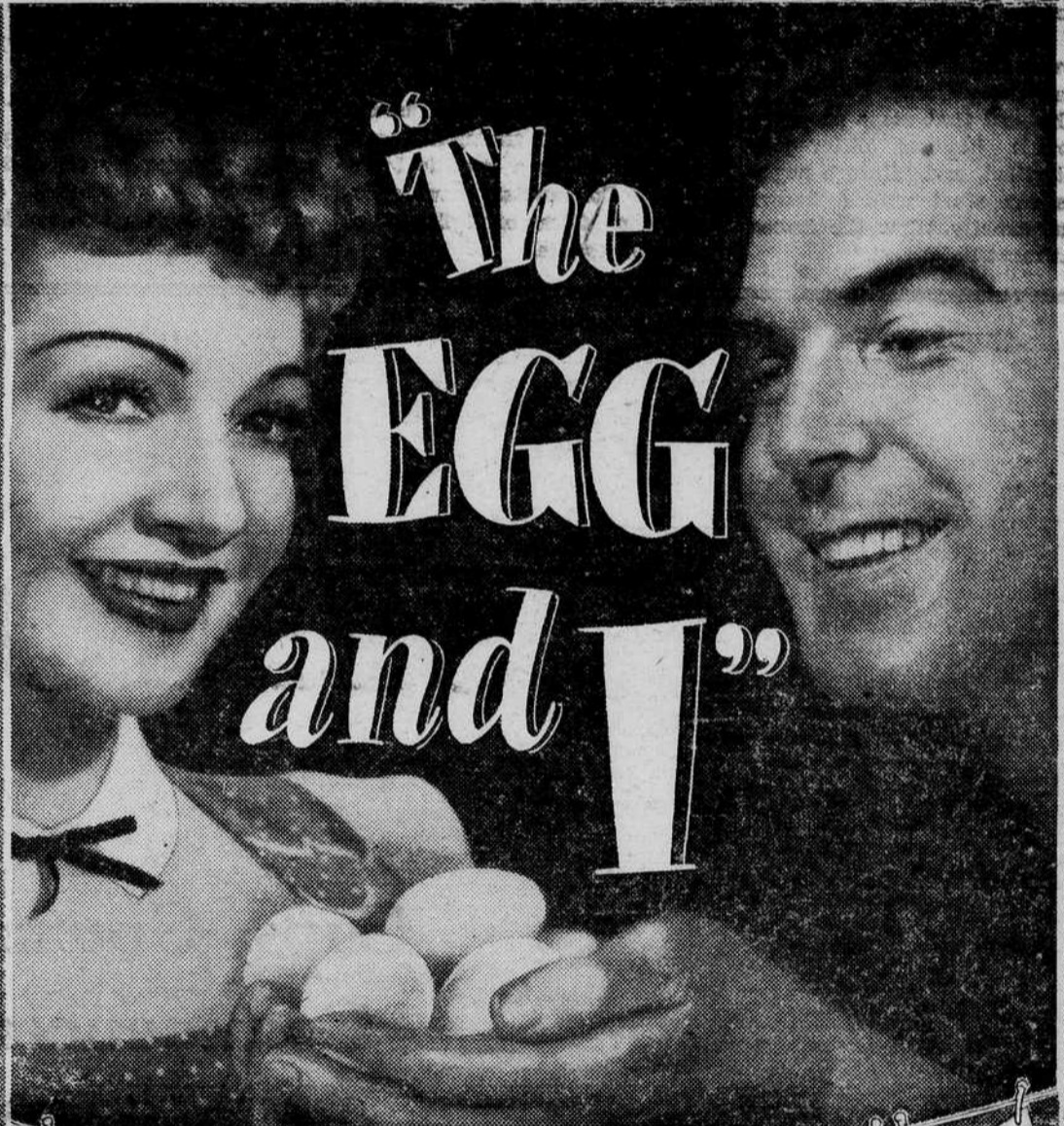
Fennell's University Pharmacy 798 E. 11th



a BEST-SELLER becomes a BEST PICTURE!

UNIVERSAL-INTERNATIONAL presents

CLAUDETTE FRED COLBERT Mac MURRAY



Each Wonderful Character—Each Cherished Scene!

with MARJORIE MAIN · LOUISE ALLBRITTON PERCY KILBRIDE · BILLY HOUSE · RICHARD LONG From the Best Selling Book by Betty MacDonald



Produced and Written for the Screen by CHESTER ERSKINE and FRED F. FINKLEHOFF Directed by CHESTER ERSKINE · A UNIVERSAL-INTERNATIONAL PICTURE

See It At Your Favorite Motion Picture Theatre

RECORDS SHEET MUSIC Classical and Popular

INSTRUMENTS ACCESSORIES

best stock in town

**WILSON** MUSIC HOUSE 39 East 10th Ave Tel. 727



GAS, OIL, REPAIRS

Whether you pull up here to get air for your tires, water for your radiator—or a complete overhauling, you will find our service prompt and expert, with satisfaction and good value assured. Now that summer heat threatens your car ready it with our excellent facilities and workmanship.

**Firestone**

CORNER OF PEARL AND 11TH Phone 448 11th & Pearl