

# Oliver Sends Gridmen Through Heavy Drill

## Jim Berwick Looking Good At Guard; Jake Leicht's Condition Still Uncertain

University of Oregon's Webfoots rounded out their final day of heavy practice in preparation for the annual Homecoming tiff with Washington State College Saturday, as they whipped through an inter-squad scrimmage last night. Coach Gerald A. Oliver again split his varsity into units with a Red team facing the Whites. The Webfoot first string as a White team looked especially sharp offensively. With Duke Iversen clearing the way, the first team backfield of Jim Newquist, Sam Ramey and Bob Koch consistently made long gains through the second team line.

Koch showed power a-plenty on line smashes, one, an off-tackle slant, going for a touchdown. Speedy Jim Newquist made another touchdown on a short end run.

### T-Formation Shown

Some idea of the potency of the Washington State "T"-formation was given when the Duck third team unit moved effectively against the second string line. Coach Phil Sorboe's special brand of razzle-dazzle, including several variations of a "spread," caught the Oregon line off-guard several times in the drill.

Also getting special attention by the Duck squad was a defense against the Cougar passing attack. After Backfield Coach Ben Winkelman scouted the WSC-Washington tilt he said that the Cougars will pass at any and all times, so the Oregon secondary defense has been getting special attention from the coaching staff.

Though ends Tony Crish and Dan Garza are the only Webfoots definitely benched for the Saturday fracas there are still some Duck ball players on the "doubtful" list. Oregon's All-American Jake Leicht will possibly see action against the Cougars, but this is not definite. About Leicht, Coach Tex Oliver said, "I'm not willing to risk permanent injury to any player by using him before he is fully recovered."

### Berwick to See Action

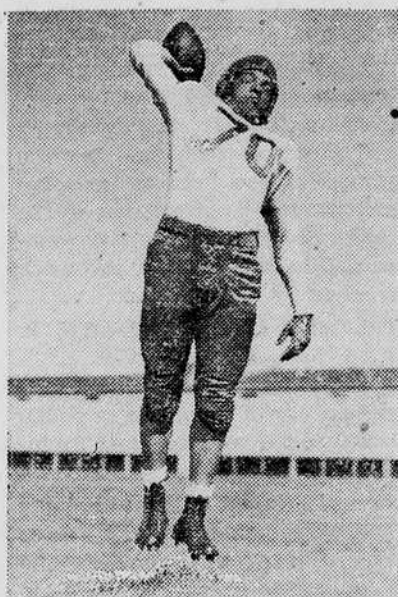
Scheduled to see his first action against an Oregon opponent this season is husky Right Guard Jim Berwick. Berwick injured a leg in a scrimmage before the College of Pacific clash and has been benched since. This week, however, he has been going great in practice.

Halfback George Bell, who injured a hip in the Montana game, is not a definite starter but will probably play. Quarterback Bill Abbey has an injured thigh, but it has been

responding to treatment and will probably be improved enough for him to play.

### SPORTS STAFF THIS ISSUE

Bernie Hammerbeck  
Bill Stratton  
Wally Hunter  
Fred Taylor  
Larry Lau  
Al Pietschman  
Don Gruening



BOB REYNOLDS . . . flashy half-back scheduled for plenty of work in tomorrow's Homecoming tilt with Washington State.

## UO-WSC In PCC Spotlight; Bruins Favored Over Bears

By LARRY LAU

The Webfoot - Cougar fray in Eugene tomorrow afternoon takes the spotlight as the game-of-the-week on the Pacific coast. For the Cougars it will be a chance to get back into the winner's circle in a big way by dumping one of the two unbeaten teams left in the conference. The Webfoots, who after last weekend rose to 22nd place in the nation in an Associated Press poll, have their first chance to test their dark horse machine against a tough opponent.

Just as one can't ignore Cougar stalwarts like Lippincott, Williams, Eggers, Abrams and Niemi, so one must also take into account the Webfoots' quiet determination to win. All things being equal, we predict Oregon's fourth consecutive victory by 14 points.

The number one team on the Pacific coast, UCLA, tangles with a California team that, after last week, cannot be counted upon to play the same brand of ball any two weekends in a row. The Golden Bears looked pitiful against the Wisconsin Badgers, were stubbornly troublesome to a spirited Webfoot team, and rose to great heights in slapping down an insistent St. Mary's aggregation. St. Mary's, despite the individual stars, can't be said to have the power of the teams the Bruins have staggered thus far . . . UCLA by 13 points.

Before an expected crowd of 75,000 the twice humbled Trojans will slink back into the Los Angeles coliseum Saturday to meet the Huskies from the University of Washing-

ton. SC fans are not accustomed to losing; the pressure must be on, and Cravath's 1946 team doesn't look like one that will respond to much pressure. As do most Northern Division teams when they travel south, (and especially after Washington's sweet 21-7 triumph over Washington State last week), the Husky cry is "Get SC!" . . . Predicting much success . . . Washington by 7 points.

### Wolverines by 14

The Michigan Wolverines, who gave half a nation a thrill last week when they fought for three quarters on equal terms with the fabulous Army team, tackle a tough Northwestern squad that mopped up on Ohio State last week. Keeping the Army-Mich. score in mind, the nod goes to the Wolverines by 14 points.

The Longhorns of Texas, who edged a stubborn Oklahoma team 20-13 last week, have lined up an other lulu in the Razorbacks of Arkansas. The Arkies are undefeated to date, having beaten a tough Baylor squad 13-0 last Saturday . . . Texas by 13 points.

Army seeking it's 23rd consecutive victory, tackles an unbeaten Columbia that may prove to be tougher than many think. Cadet power is not to be denied, however . . . Army by 14 points.

### Old Eli by 13

In the East, it's Yale versus Cornell in a game that should be a real thriller. Yale lost a close one last week to Columbia, but figures to bounce back into the winners' circle this Saturday . . . Yale by 13 points.

The ghosts of former mighty Fordham elevens will stir restlessly Saturday when the Galloping Gaels

## Clear the Decks!...

## Emerald Experts Step Up With Weekend Forecasts

Step back, you national experts! Here come the Emerald pigskin prognosticators with their weekly tips hot from the crystal bowl and the two-headed coin. Old Lady Luck smiled upon several of the lads last weekend, and at present the combined efforts of Dobbs, Lee, and Stetson are unable to adequately shelter their nodding noggins.

Says the official Emerald prognosticator, Larry Lau, as his hands draped lazily from the pockets of his burlap vest, "Considering the fact that we ignore breathers, and choose only the toughies, I'd say Paul Williamson has nothing on us." (Step down, brother; you're

choosing Texas and they haven't breathed hard yet.)

Tommy Wright, now working newsie but a former sports man, gladly jumped on the soapbox to expound on the prediction situation for a few thousand words: he was promptly stifled by his wife, however, with some remark referring to the dignity of an editor's spouse.

At a late hour last night, Bernie Hammerbeck, sports editor and currently trailing in the predicting race, was hounded for a statement, but had no comment as he pulled a tattered felt over his circled eyes and caught the midnight freight for a weekend of solitude.

	John	Tom	Bernie	Bill	Larry	Wally	Comp.
WSC-Ore. ....	6-21	7-21	7-14	7-21	7-21	6-21	7-20
Wash.-U.S.C. ....	13- 6	6- 7	19-13	13- 7	7- 0	18-14	13- 8
UCLA-Cal ....	34-12	20-13	20- 7	28- 7	20- 7	21-14	24-10
Mich.-North ....	27-12	20-14	13- 0	19-13	14- 0	19- 0	19- 7
Ill.-Wisc. ....	13- 6	7- 6	7-13	14-12	6-13	26-20	12-11
Ok. A. & M.-Geo. ....	6-21	7- 0	0-30	7-26	6-19	13-20	7-19
Geo. Tech.-LSU ....	6-20	0-21	0- 7	0-13	7-20	6-21	3-17
Ala.-Tenn. ....	14- 7	7-14	7- 9	7-13	7- 6	14-13	10-10
Army-Col. ....	28-13	20-10	28- 7	27- 7	20- 6	27- 7	25- 8
Tex.-Ark. ....	35- 6	33- 7	26-13	33-13	13- 0	35-14	29- 9

of St. Mary's invade home territory. . . St. Mary's by 14 points.

Holy Cross and Syracuse tangle in their annual tilt with neither team going into the fray a potential Bowlite . . . Holy Cross by 10 points.

Down South, Texas A & M and TCU meet in a game which is stirring up tremendous interest in the cow country. Neither will field a team that even slightly resembles the squads of better days. The Aggies have a definite edge though . . . Texas A & M by 13 points.

The Georgia Bulldogs tangle with an Oklahoma A & M team that, thus far, hasn't lived up to its pre-season rating. Georgia on the other hand has been mentioned already in connection with the "big" bowl bid . . . Georgia by 13 points.

In the deep South, Alabama and Tennessee meet in a game which may decide much regarding bowl invitations. Both have had warm-up games, and both are undefeated. The coin came up tails . . . Alabama by one point.

A harassed Navy team will attempt to hit paydirt Saturday in its tilt with the potent Tarheels of North Carolina. Navy reserve power is at a low ebb indeed . . . North Carolina by 7 points.

Westminster house was erected in 1919.

## Deskins A Daddy

Curt Deskins, varsity tackle, has an added reason to play inspired ball Saturday; he is a father! His wife Grace was delivered of a nine-pound, eleven ounce girl, 6:29 a.m. Thursday morning at the Sacred Heart hospital. Dr. George F. Guldager, team physician, presided.

## Outing Club Schedules Hendricks Park Hike

Second hike on the schedule of the Outing club is a sunrise breakfast jaunt to Hendricks park Sunday morning. The hiking group will meet in front of Gerlinger hall at 6 a.m., according to Lou Ann Morrison, president, and eat breakfast at the park.

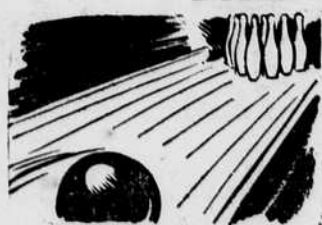
Membership to the Outing club is made upon receiving 50 points for participation in hikes, ski trps, and other activities of the group. An Emblem containing the figure of a duck hiking up a hill is received at time of membership, Miss Morrison said.

## Fellowships Offered

Harvard university school of public administration will offer several fellowships for training in governmental work during the year 1946-47. I

MAKE

α  
DATE

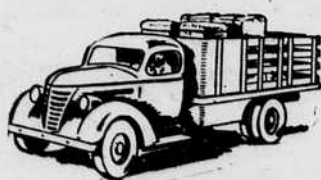


For an

EVENING  
of FUN

DORSEY'S  
U-BOWL

12th & Willamette  
Phone 4716



PIERCE

FREIGHT LINES, INC.

FREE PICK-UP and DELIVERY

Call  
289

# Welcome Alums



Eugene Water Board

Municipal Electric and Water Utilities