

Mary Spiller Coeds Top Fund Drive

For contributing \$4.20 per person to the Red Cross war fund drive, Mary Spiller hall was awarded the Red Cross cup Saturday night at the Oregon-OSC game. Campus donations during the drive amounted to \$956.68, falling short of the \$1200 goal.

Contributions reported by women's living organizations were: Delta Gamma, \$67.90; Alpha Delta Pi, \$65.75; Hendricks hall, \$61.25; Kappa Alpha Theta, \$52; Gamma Phi Beta, \$50; Kappa Kappa Gamma, \$44.95; Pi Beta Phi, \$43; Chi Omega, \$41.20; Delta Delta Delta, \$41; Alpha Chi Omega, \$40; Alpha Omicron Pi, \$38.25; Susan Campbell hall, \$35.57; Alder hall, \$33; Alpha Gamma Delta, \$31; Gamma hall, \$24.86; Alpha hall, \$22.30; Alpha Phi, \$22.25; University house, \$20.65; Sigma hall, \$14.80; Highland house, \$13.90; Zeta hall, \$13.02; Alpha Xi Delta, \$11.25; Hilliard house, \$10.16; Sigma Kappa, \$9.60; Orides, \$7; Rebec house, \$5.25.

Men's donations included: Alder hall, \$33; Yeomen, \$14.50; Omega hall, \$11.79; Campbell club, \$5.71; Sherry Ross, \$1.40.

Local Firm Helps Union

Two hundred dollars was added to the University Student Union building fund last week through a gift by the Medo-Land creamery of Eugene. Acting President Orlando John Hollis announced this week. The gift was inspired by the firm's interest in the school as a community enterprise and the desire to give material assistance in the growth of the institution, said Frank H. Strong, business manager.

Construction of the building at the corner of University street and Thirteenth avenue will start when materials are available.

Play Casting Set Tonight

Final tryouts for "Liliom," University theater attraction to succeed "The Trojan Women," will be held tonight at 8:30 in the drama studio. Horace W. Robinson, director, has announced.

Anyone interested who has not already tried out should do so at this time. If tonight is not convenient, Mr. Robinson may be phoned at the drama studio for appointments.

The first reading rehearsal will begin Monday, March 12, and the names of those called to read will be posted on the bulletin board in the drama studio.

"Liliom" is scheduled for production April 27 and 28, and May 1 and 3.

CLASSIFIED ADS

Lost

WEDNESDAY. Green Eversharp pen. Reward. Bob Pittenger. Ph. 1056-J.

SILVER BRACELET, flower pattern, on campus Saturday morning. Reward. Phone 1516.

EVERSHARP pen, blue with gold top. Reward. Emerald business office.

BROWN leather wallet. Reward. Barbara Younger. Phone 2306.

BROWN leather billfold. Reward. Lois Clause; phone 1309.



Photo by "Dot" Dotson

Ready for spring in a pale blue skirt, blouse, packet, and hat. Mary Dixon, DG, models the new short length skirt for spring 1945 to be found at the J. C. Penney Co. in Eugene.

Ship Your Trunk and Baggage



for Home via

CONSOLIDATED FREIGHTWAYS INC.

* Fastest Service Available

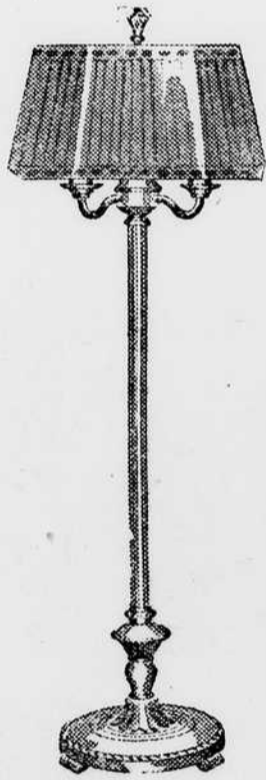
* Fully Insured

* We Pick Up and Deliver

Direct Service to Principal Points in Forty-five States

We have handled Oregon students' vacation baggage for over twelve years and are fully familiar with your problems—so can assure you of quick and efficient service.

Phone 346



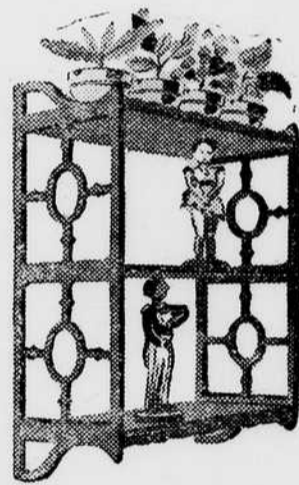
Make Your Room

Brighter

for

SPRING TERM

... and all the time



IDEAS

- Lamps
- Small Tables
- Mirrors
- Chairs

Our prices are priced to fit your college budget. Come in and look at our wide variety of college furniture for your room.

SEE THEM AT—

Johnson Furniture Co.

649 Willamette

