

New Officers Assume Duties At Coed Living Organizations

With spring term almost here, the usual changes in house administrations have been made. Men's houses have not elected new officers yet, but officers of women's living organizations follow:

Independent houses include Lombardy lodge: president, Helen Webb; vice-president, Jane Copeland; secretary, Harriet Farr; treasurer, Jerrilee Lovejoy; social chairman, Barbara Patterson; song leaders, Beverly Brown, Betty Combs; Highland house: president, Alyce Pepion; vice-president, Anne Craven; secretary, Esther Parronen; treasurer, Gloria Campbell; historian, Winifred Romtvedt; song leader, Lee Lauderdale; Birch lodge: president, Margaret Lavin; vice-president, Wanda Lu Payne; secretary, Joyce Utz; treasurer, Bernice Setere; song leaders, Peggy Page and Betty Strauss; Casablanca: president, Margaret Murphy; vice-president, Elizabeth Mentzer; secretary, Beverley Hopley; treasurer, Jane Nunamaker; social chairman, Pat Smart.

Alder lodge: president, Ann Van Valzeh; vice-president, Gwendolyn Pearson; secretary, Dorothea Wilson; social chairman, Virginia Travis; song leader, Jean Braden; sergeant-at-arms, Roberta Garth; Hawthorne lodge: president, Janet Douglas; vice-president, Pat Eakin; secretary, Harriet Kempston; treasurer, Pat Spencer; sergeant-at-arms, Ann Talcott; social chairman, Gloria Marchi; freshman adviser, Mary Elizabeth Davis; song leader, Shirley Stearns; activities, Esther Griffiths; Hillcrest: president, D. Lu Simonsen; vice-president, Elaine Mesley; secretary, Betty Lombard; treasurer, Betty

Crobb; seargeant-at-arms, Eileen Breneman; song leader, Frances Smith. Concluding the group are Hilliard house: president, Bernice Davidson; vice-president, Blanche Svoboda; secretary, Hildegard Roselund; treasurer, Beverley Listmann; song leader, Marge Folsom; University house: president, Ruth Crymes; vice-president, Betty Linstedt; secretary, Shirley Kroeger; treasurer, Frieda Koehler; song leader, Marjorie Priest.

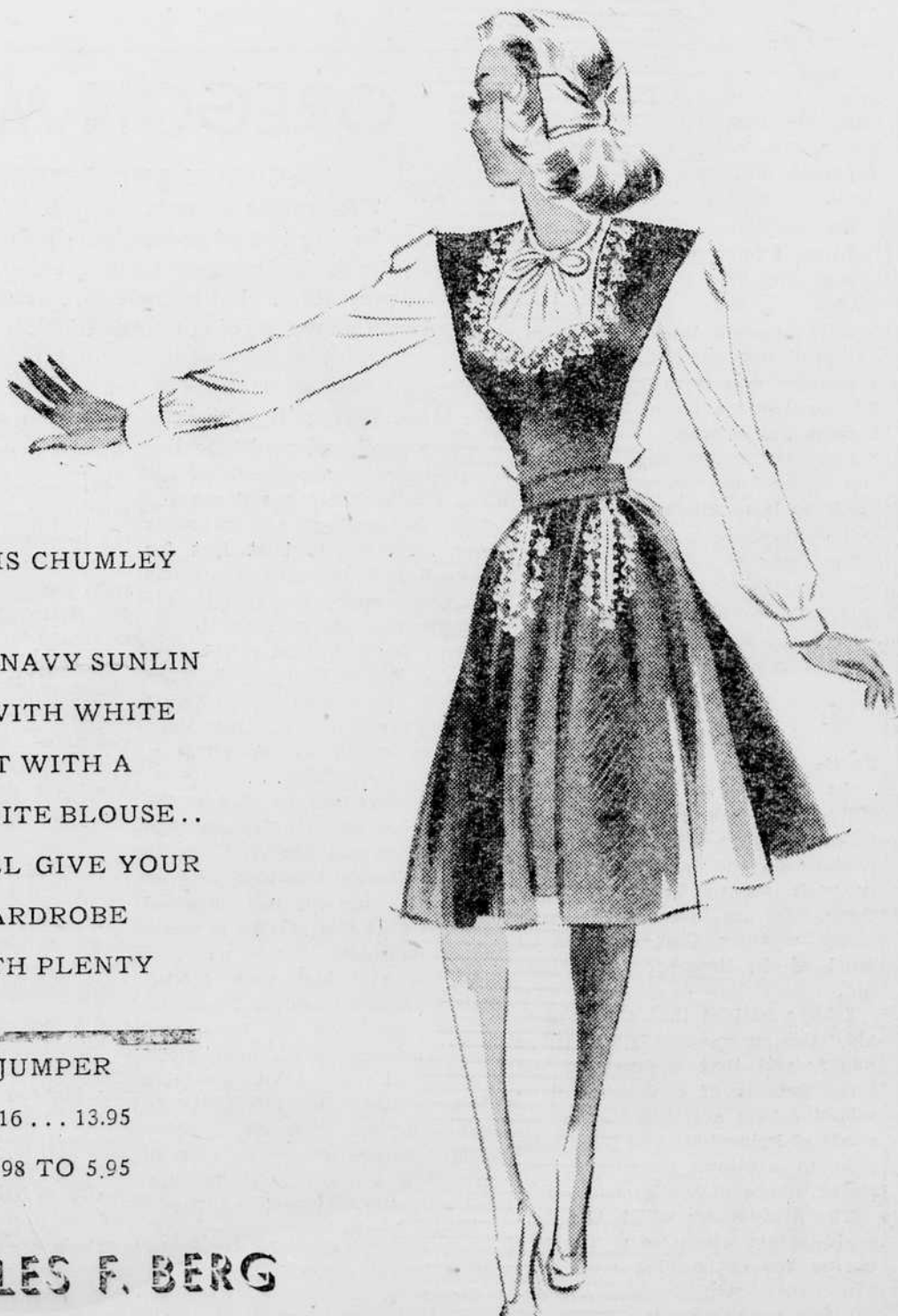
New sorority officers are Alpha Chi Omega: president, Frances Anderson; vice-president, Arliss Boone; secretary, Beatrice Beard; corresponding secretary and song leader, Barbara Putnam; treasurer, Mary Duffey; social chairman, Elaine Wilson; Alpha Delta Pi: president, Lorraine Davidson; vice-president, Mary Stanley; secretary, Dorothy Rogers; treasurer, Marty Beard; social chairmen, Jeanne Hall and Doris Trask; song leader, Barbara Bentley; Alpha Gamma Delta: president, Yvonne Umphlette; first vice-president, Thomasine Rundell; second vice-president, Irene Jolivette; corresponding secretary, Maryan Howard; recording secretary, Marion Saltness; treasurer, Vera Fair; social chairman, Mickey Donovan; song leader, RoseZena Latta.

Alpha Omicron Pi: president, Connie Fuller; vice-president, Jean Miller; executive secretary, Nadine Neet; corresponding secretary, Mary Lee Elliott; treasurer, Elaine Gephart; social chairman, Mary Louise Uhls; song leader, Jean Carkin; Alpha Phi: president, Carol Smith; vice-president, Jean Taylor; secretary-treasurer, Dorothy Pryor; social chairman, Tony Sutton; song leader, Adrian Mofot; Alpha Xi Delta: president, Ruth Van Buskirk; vice-president, Betty Ann White; corresponding secretary, Virginia Tompkins; recording secretary, Joan Van Dorn; treasurer, Jean Johnson; song leader and social chairman, Lois Whealey;

Chi Omega: president, Catherine Dunn; vice-president, Betty Hoge; secretary, Betty Jones; treasurer, Phyllis Miller; social chairman, Marilyn Holden; song leader, Betty Lee Brown; personnel, Jean Kirkwood; Delta Gamma: president, Sue Stater; vice-president, Ardis Jensen; corresponding secretary, Jean Murray; treasurer, Phyllis Horstman; secretary, Barbara Lucas; social chairman, Doris Weinberg; song leader, Marguerite Leslie.

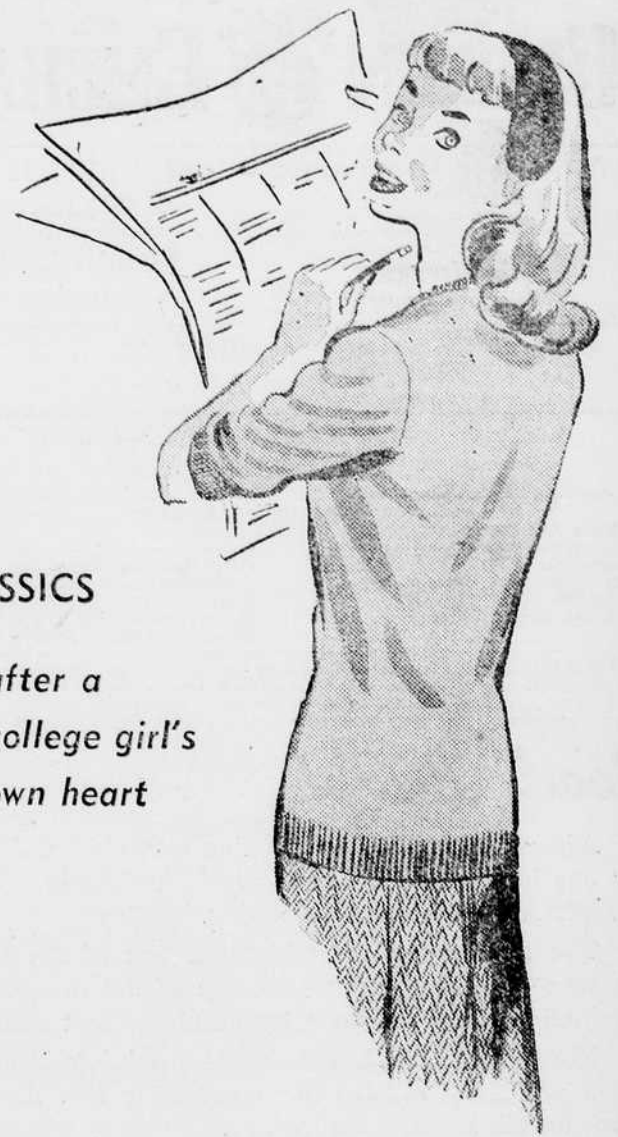
Gamma Phi Beta: president, Gene McPherson; vice-president, Betty Butler; recording secretary, Betty Bennett; corresponding secretary, Barbara Erb; treasurer, Louise Goodwin; song leader, Maxine Cady; Kappa Kappa Gamma: president, Alyson Hales; house counselor, Nanette Holmes; standards chairman, Beverly Jacob; social chairman, Janet Roberts; treasurer, Sally Twohy; secretary, Ann Walker; song leader, Nancy Boles; Sigma Kappa: president, Patricia Davis; vice-president, Charlotte Older; secretary, Margaret Ambler; treasurer, Lorraine Maughan; social chairman, Mary Corrigan; song leader, Shirley Brace.

CHARLES F. BERG . . . BROADWAY NEAR ALDER. . . PORTLAND, OREGON



TAKKE THIS CHUMLEY JUMPER . . . IN RED OR NAVY SUNLIN BRAIDED WITH WHITE . . . SPIKE IT WITH A FRESH, WHITE BLOUSE . . . AND YOU'LL GIVE YOUR SPRING WARDROBE A LIFT WITH PLENTY OF SPIRIT!
 CHUMLEY JUMPER
 SIZES 9 TO 16 . . . 13.95
 BLOUSES 3.98 TO 5.95

CHARLES F. BERG



CLASSICS

after a college girl's own heart



CALEDONIAS . . . loose-fitting sweater, smart in white, color. \$6.50

McMULLEN'S classic tailored blouse in white crepe \$6.50

CARDIGANS, braid-bound, are the thing for Spring; 1944, \$15.95

CHECKS, black and white favorites, well-tailored. \$9.95



SEASON-SKIPPER the coat that's equally right Summer or Winter. \$49.95

H. Gordon & Co.

owned now by Edgar L. Rice . . . you'll really feel welcome here