



# Classes to Nominate Officers At 7:30 Tuesday, April 20; Execs to Fix Constitutions

Classes will nominate for next year's class officers at 7:30 p.m. Tuesday, April 20, in the following places: freshman—207 Chapman; sophomores—Villard auditorium; juniors—105 Commerce. This was decided Saturday at a meeting of class presidents and representatives of the executive council in the educational activities office.

Nominations are to be turned in to class presidents with declarations of intention to run and certificates of eligibility from the dean of men or dean of women's office. Class presidents are to be in charge of the nominating assemblies.

### Academic or Not

It will be decided at the executive council meeting this afternoon whether to have a class poll list made up from academic records in the registrar's office, thereby making no distinction between "campus juniors," "campus seniors" and actual sophomores, or to arrange for some other system of determining to which class each student belongs in terms of number of years on the campus.

The consensus opinion at the meeting Saturday was that the academic system would have to be followed and that poll books would have to be typed up in the registrar's office. In this case each class would have two poll books, one to be held by an Independent and one by a Greek representative on the voting committee for the class.

In former years class cards made this job easy for the voting committee. Now, unless the academic system is followed, there are only two ways left by which to ascertain the class standing of each student.

### Alternatives

One of these is to hold a time-eating costly registration, as in a government, party-system election, or to take the data needed from the white cards filled out at registration and filed in the registrar's office, the dean of men and the dean of women's office, and the University news bureau.

According to Jack L. Billings, Emerald editor, it has been arranged to use the news bureau files as an indexed "poll book" on election day if the executive council decides to use this plan.

The executive council will  
*(Please turn to page three)*

## Matrix Guest Visits Turkey, Peru, Alaska

By CAROL GREENING

Adventure has been the keynote of Lucile Saunders McDonald's life. Her arrival on the scene is the sparkplug that starts things happening.

Mrs. McDonald, guest speaker at the Matrix Table dinner scheduled for April 26 honoring women in literature, music, and the arts, is now fairly peaceably employed by the Seattle Times, but this is the exception in her life rather than the rule. While working for the United Press in South America, she rode nine days on horseback to the lost Inca city of Macehu Pichu in Peru, an unusual feat for any woman, and unheard of in 1920.

Rumors of a pre-historic monster drew her to an Andean lake in Patagonia. The alleged Plesiosaurus turned out to be mythical, but it flashed through the headlines in its day.

In Asuncion, Paraguay, she witnessed a minor rebellion fostered by two local publishers. A New York Times correspondent in Turkey, she covered a Kurdish revolt in 1931, when no correspondents were allowed in the war area.

In Alaska she edited the Cordova Daily Times and covered South Central Alaska for the Associated Press. On one occasion she scooped a story on the first  
*(Please turn to page eight)*

## 'Sing' Participants Will Draw for Order Today

All organizations for all campus sing to be held Junior Weekend will participate in a drawing this afternoon at the Kappa Kappa Gamma house to determine in what order they will sing.

Each group is asked to have a representative at the Kappa house at 4 p.m. today.

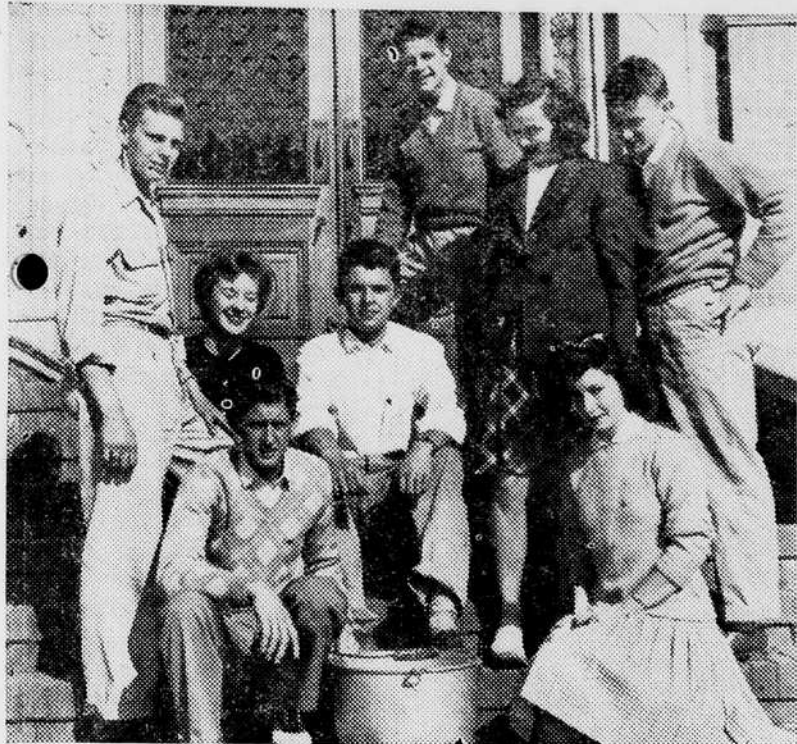


Photo by Betty Biggs Schrick

### SOMETHING'S COOKING . . .

. . . for the Frosh Glee as committee chairmen gather round a kettle to brew some Black Magic. From left to right: Kurt Nelson, Signe Eklund, Hank Doeneka, Mart Pond, Rollie Gabel, Delores Hewitt, June Johnson, and John Miller.

## Ray Dickson to Weave 'Magic' Spell for Frosh

Weaving a mystic web of swing around the 1943 Frosh Glee, Ray "Spider" Dickson and his Collegians featuring "Four Knights and a Dream," will cast a spell of "Black Magic" on the annual Freshman dance Saturday evening from 9 to 12 in McArthur court.

Not to be denied the services of a band that would draw thrill seeking campus folk on the strength of its name, the Frosh Glee committee under the direction of Mart Pond, announced Monday that the abilities of Dickson's Collegians and the "Four Knights and a Dream" had been obtained for this all-campus dance.

### Four Knights and a Dream

For the past few years, bands known country wide have stimulated dancers attending this early spring dance. Among them were Jan King who furnished the rhythms last year, and the "King of Swing," Benny Goodman who tantalized the local jive set some two years ago. To obtain an orchestra from such a selected company of orchestras this year would be impossible, because of transportation difficulties, the Glee committee found after days of corresponding.

The "Four Knights and a Dream" will help Maestro Dickson entertain Saturday evening when they harmonize on their arrangement of "Black Magic." The quintet is composed of Charles Gething, Eugene "Chick" Cecchini, Don Bridenstine, Frank Sardam, and Paul Beard. They also will provide the "Latin" along with the strains of Dick-

*(Please turn to page three)*

## ERC Becomes Extinct As Last Members Go

The enlisted reserve corps will finally become extinct on the campus when its last five men leave Friday and Sunday for the armed services. Orders for the remaining five men were slow in coming through with the result

three men will leave April 16 and two men will leave April 18.

The list includes: April 16, Edwin M. Baker, Aaron A. Burchuk, and John P. DuMont. Glenn W. Metcalf and Gene E. Leo will leave April 18.

## Campus Show Rehearsals Held

"My Sister Eileen," Broadway and motion picture hit, is now in rehearsal for production on April 23, 24, 27, and 28 by the University theater.

The play written by Joseph Fields and Jerome Chodorov, is based on sketches written by Ruth McKenney.

Their troubles begin when they move into a typical one-room furnished apartment rented by a Greek proprietor. Ruth is struggling for recognition as a writer and Eileen as an actress. Annoyances come from drunks, a misunderstanding policeman, two Arabs, and some Brazilian naval cadets.

The University players are following the Hollywood version in the types of girls cast for the roles.

The cast includes: Mr. Appopoulos, Robert Farrow; Ruth Sherwood, Dorothy Weygant; Eileen Sherwood, Nelda Rohrbach; Jensen, Ralph Stover; Lonigan, Jack Leonard; The Wreck, James Bronson; Captain Fletcher, Bill Wood; Helen Wade, Betsy Steffen; Frank Lippincott, David Jahn; Chick Clart, Ken Griffith; Cossack, Gardner Williams; Violet Shelton, Norma Baker; Mrs. Wade, Helen Johnson; Robert Baker, Edwin Mickel; Walter Sherwood, Ethan Newman; prospective tenant, Marie Hewett; consul, Robert Over; street Arabs, Jimmy Toner and Bobby Joe Quigley; drunks, George Fletcher and Frank Loomis; and six future admirals, Gordon Cochran, Bill Wood, Jack Titus, Art Damchen, Chic Chaloupka, and Don Jones.



ROYAL FLUSH . . .

. . . for the Junior Weekend are these four princesses and a queen. Queen Mary Bentley, center, is surrounded by her court, Princesses Frances Johnston, Kay Jenkins, Susan Sawyer, and Mary Wright.

—Photo by Bill Goldstein