

Living Organization Officers Named

Student Shortage Faced By UO House Presidents

By JUNE TAYLOR

Living organizations throughout the campus announced their officers today for 1942 to 1943, with 16 per cent less students enrolled at school than last year at this time.

2% Decrease

Boys still outnumber girls by 321. However, this is a decrease of two per cent over last year's total. The organizations and their respective officers follow.

Alpha Chi Omega: president, Barbarajan Tuttle; vice-president, Lois Hulser; recording secretary, Carolyn Holmes; corresponding secretary, Emily Tyree; treasurer, Helen Johnson; pledge officer, Lois Hulser. **Alpha Delta Pi:** president, Marilyn Marshall; social chairman, Jean Villair; treasurer, Dotty Gullette; vice-president, to be announced.

Alpha Gams

Alpha Gamma Delta: president, Watrine Spencer; first vice-president, Dorothy Walworth; second vice-president, Ione Partillo; secretary, Elsie Brownell; pledge officer, Dorothy Walworth. **Alpha Omicron Pi:** president, Marge Ott; vice-president, Matilda Boricezec; secretary, Lornelle Kennedy; treasurer, Maribeth Rodway. **Alpha Pi:** president, Patsy Palmer; vice-president, Carolyn Lous; secretary-treasurer, Janet Farnham.

Chi Omega

Chi Omega: president, Helen Pullen; vice-president, Patty Pearson; treasurer, Dorothy Routt; secretary, Josephine Ward; pledge officer, June Hitchcock. **Tri Delta:** president, Mary Jane Dunn; vice-president, Betsy Steffenn; treasurer, Kay Davis; corresponding secretary, Ann Tyson; recording secretary, Stephanie Peterson.

Dee Gees

Delta Gamma: president, Edith Borda; vice-president, Margaret Ann Jackson; secretary, Peggy Magill; treasurer, Elizabeth Edmunds; pledge officer, Peggy Magill. **Gamma Phi Beta:** president, Ellie Engdahl; vice-president,

Connie Averill; treasurer, Mary Wright; secretary, Mary Elizabeth Earl; pledge officer, Shirley Huntington.

Hendricks Hall

Hendricks hall: president, Helen Holden; vice-president, Margaret Murphy; social chairman, Bea Gay; secretary, Peggy Kline; treasurer, Dorothy Ann Paddock. **Highland house:** president, Jane Huston; vice-president, Betty Jones; secretary, Wanda Burch; treasurer, Doris Jones.

Hilyard House

Hilyard house: president, Lee Montgomery; vice-president, Adele Riggs; secretary, Bernice Davidson; treasurer, Hildegard Roselund; scholarship adviser, Dorothy Nulls. **Kappa Alpha Theta:** president, Nelda Christenson; vice-president, to be announced; secretary, Grace Williams; treasurer, Virginia Campbell.

Kappa Kappa Gamma

Kappa Kappa Gamma: president, Marge Sawyer; vice-president, Helen Moore; secretary, Gloria Prouty; treasurer, Margaret DeCou; pledge officer, Mary Robinson. **Pi Beta Phi:** president, Mary Louise Vincent; vice-president, Nancy Ames; secretary, Lora Case; treasurer, Mary Loney; pledge officer, Phyllis Foster.

Sigma Kappa

Sigma Kappa: president, Maxine Tripp; vice-president, Jean Schnieder; second vice-president, Alise Older; treasurer, Alva Granquist; pledge officer, Jean Schnieder. **Susan Campbell president De Loraine Markwordt;** vice-president, Dorothy Gustafson; secretary, Claire Renn; treasurer, Ardis Jensen; social chairman, Patricia Perry; scholarship chairman, Pauline Lightfoot.

University House

University house: president, Lila Mae Furchner; vice-president, Betty McFadyen; secretary, Marianne Blenkinsop; treasurer, Ruth Helen Crynes. **Zeta Tau Alpha:** president, Evelyn Webb;



A twin-motored advance trainer roars over Ellington field, Texas, where every day more flying fortress pilots are being turned out.

vice-president, Helen Trask; secretary, Patsy Stewart; treasurer, Lola Rae; pledge officer, Marge de Pourtalis. **Alpha Hall:** Lee Schmidt; secretary-treasurer, Euclid Paris; vice-president, to be announced.

Alpha Tau Omega

Alpha Tau Omega: president, Robert MacDonald; vice-president, Russ Hudson; secretary, Paul Moore; treasurer, Oge Young. **Beta Theta Pi:** president, Robert McKinney; vice-president, Rolph Fuhrman; treasurer, Merlin Nelson; pledge officer, Charles Nelson; social chairman, Bill Macy.

Campbell Club

Campbell club: president, Leighton Platt; vice-president, Ray Cook; secretary, Dennis Bokewell; treasurer, Weldon Sloane; social chairman, Mark Howard. **Canard:** president, Bob Parsons; vice-president, Duane Wieden; secretary, Carl Backstrom; treasurer, Paul Merrick.

Chi Psi

Chi Psi: president, John Buserud; vice-president, John Gleason; secretary, Neal Regin; treasurer, Tom Houston; pledge officer, Bud Fenton.

Delta Tau Delta

Delta Tau Delta: president, Fred Phillips; vice-president, Pierr Barnett; treasurer, Wayne Phillips; secretary, Stanley Robinson. **Delta Upsilon:** president, Les Anderson; recording secretary, Ed Beck; treasurer, Ronald Dilling; corresponding secretary, Bruce Kirkpatrick; vice-president, Merritt Kufferman.

Gamma Hall

Gamma hall: president, Chet Locke; vice-president, to be announced; secretary - treasurer, Minor Brady. **Kappa Sigma:** president, Jim Lium; vice-president, Warren Taylor; secretary, Jim Hoggins; treasurer, Howard Girdlestone; pledge officer, Warren Taylor; social chairman, Has Haight.

Kirkwood Co-op

Kirkwood co-op: president, Bob Archibald; vice-president, Harold Brevig; manager, Ed Austin; treasurer, Rollin Wood. **Omega hall:** president, Jack Robinson; secretary - treasurer, Warren Roper; manager, Sherman Olts; social chairman, Dave Ewing. **Phi Delta Theta:** president, Don Kirsch; vice-president, George Olson; warden, house manager Preson Phipps; Bill Skade; warden. **Phi Gamma Delta:** president, Bob Jones; treasurer, Jack Risley; Bill Surrell, secretary; pledge officer, Fred Karlson.

Phi Kappa Psi

Phi Kappa Psi: president, Bob Tilson; vice-president, Cliff Wilcox; secretary, Ted Klehmet; treasurer, Jerry O'Callaghan; social chairman, Don Kresse. **Phi Sigma Chi:** president, Robert Cougill; vice-president, Ed Wyatt; secretary, Bert Shoemaker; treasurer, Alvin Wimer; pledge officer, Louis Felshiem.

Pi Kappa Alpha

Pi Kappa Alpha: president, Jim Harrison, vice-president, Tommy Roblin; secretary, Dan Potter; treasurer, Jack DuLong; pledge officer, Jim Richmond. **Sherry Ross hall:** president, George Shade; vice-president, Alfred Dodson; secretary-treasurer, Clyde Johnson; athletic manager, Harlow Hayes.

Sigma Alpha Epsilon: president, Clinton Childs; vice-president, Robert Farrow; secretary, Johnny Ryel; house manager, John Ryel; pledge officer, John Ryel. **Sigma Alpha Mu:** president, Roy Packouz; Glen Barde; secretary - treasurer, Morrie Riback; pledge officer, Glen Barde.

Sigma Chi

Sigma Chi: president, Bill Bradshaw; vice-president, Ray Pearson; secretary, Virgil Parker; house manager, Frank Baker; pledge officer, Dick Hanen. **Sigma Nu:** president, John Bualo. **Sigma Phi Epsilon:** president Warren Christensen; vice-president, Lars Henderson; secretary, Robert Genderson; house manager, Dean Van Lydegraf; pledge officer, Hubert Williamson. **Theta Chi:** president, Joe Wicks; vice-president, Bob Newland; secretary, Bud Putnam; house manager, Ulric Dorais; pledge officer, Gordon Childs.

Yeomen: president, Bob Sabin; vice-president, Max Johnson; secretary, Harry Johnson; social chairman, Fred Rugh.

Officers not elected will be announced later, as well as those from Zeta and Sigma halls, which he reported was unable to contact.

Push on Athletic Cards

(Continued from page one) campus living groups. Pete Howard of the YMCA is also authorized to sell cards. Students may contact him at extension 266.

Margie Pengra and Ardis Jensen represent Orides in the sale, while Bill Dellar and John Wray are acting for Yeomen.

The usual prize of \$10 worth of specially selected record albums will be awarded to each of the first three organizations

Rally Positions Filled Monday

Applications for the four positions on the rally squad totaled approximately 55 as the deadline was reached at 5 p.m. Thursday, according to Carolyn Holmes, ASUO second vice-president.

At that time the homecoming petitions had not been counted, but it was assured that there were not quite as many for the rally squad.

All applicants will be interviewed at 3 p.m. next Monday in McArthur court, announced Miss Holmes. After that the executive council will select three sophomores and one junior for the squad and one upperclassman as homecoming chairman.

Book Shortage Strikes Co-op

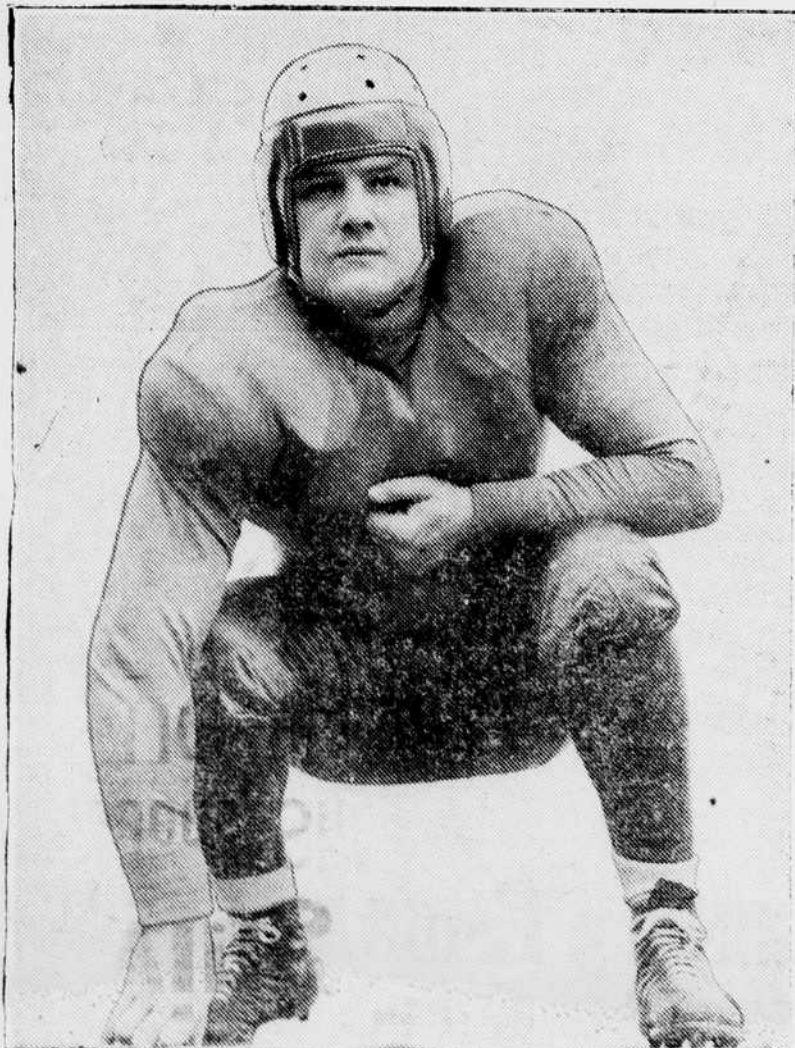
More serious to the student enlisted in the reserve corps than the shortages of sugar, gasoline, and rubber is the dearth of books for the course in elementary algebra. The old excuse for missing assignments, "I can't get a book," is now a grim reality for those students. More than 300 men have registered in the course, completely exhausting the book supply of the University Co-op.

Elements of algebra is practically compulsory for men in the reserves who have not had any previous training in that subject. Any person having a copy of the book, Peterson's "Elements of Algebra," is requested to turn it in to the Co-op so those registered in the course may be supplied.

Reporters Requested To Attend Meeting

Students who signed up for the Emerald reporting staff are requested to attend a meeting in room 105 journalism building, according to Jack LeRoy Billing, news editor.

Night staff and copy desk workers will not be required to attend the meeting. The meeting is absolutely compulsory for reporters, Billings emphasized.



"CRUISER" DICK ASHCOM . . .

. . . Webfoot lineman, who is expected to help snare the WSC Cougar in Pullman this afternoon.