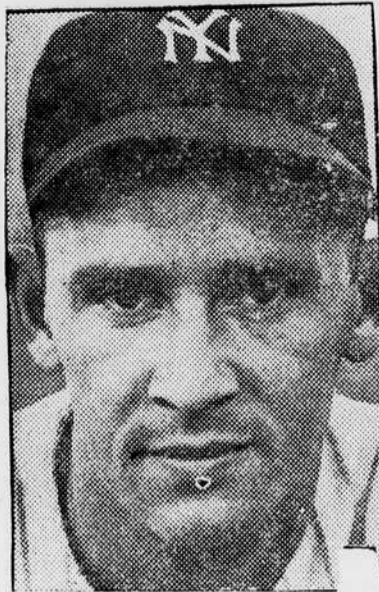


Ducks, WSC Clash Today

Probable Starting Lineups

Oregon		Washington State
Shephard	LE	Suseoff
Moshofsky	LT	Dyson
Rhea	LG	Ward
Bodner	C	Remington
Culwell	RG	Giske
Ashcom	RT	Wright
Nowling	RE	Anderson
Surles	Q	Baker
Roblin	LH	Stoves
Oliphant	RH	Akins
Dyer	F	Kennedy

JOE GORDON



Joe Gordon's Series Record

Games 2; at bat 9; runs, 0; hits 1; pct. .111. Put outs 2; assist 4; errors 0; pct. 1.000.

Sports Staff

Sports Staff:

Lee Flatberg, co-editor
Fred Treadgold, co-editor
Bill Stratton
Joe Miller
Si Sidesinger
Ace Calise
George Kapel

Touch Football Teams Practice

With intramural touch football tentatively scheduled to start Tuesday, most houses have begun workouts, with the SAEs the defending champs.

The SAEs will possibly be contenders for the crown again this year, but they will be without the backbone and ace pass slinger, Ozzie Redfield, who has gone into the higher brackets and is now playing on the varsity.

Paul Washke, campus intramural director, has urged full cooperation in this program, to tie in with the mass PE setup that has caused so much comment.

Touch football has proven to be one of the most popular intramural events, but more and more are urged to come out this year, and full cooperation is expected.

There has been no volleyball schedule announced yet, but it will begin as soon as the football is played off and in the same manner as last year. There will be two leagues, "A" and "B".

UO Alum Giving Psych Tests at Huge Navy Base

Jack Bangs, former instructor in speech at the University, is now stationed with the Navy at Davisville, Conn. This Navy base is the largest in the United States and is only nine weeks old, according to a letter received by Dr. Howard R. Taylor, head of the psychology department.

Mr. Bangs reports that he is doing psychometric testing; he interviews from 500 to 750 men a day and decides tests for them. While at the University of Oregon, Mr. Bangs worked with the psychology department doing remedial speech work.

Oregon Underdogs In Cougar 'Jinx' Tilt

By FRED TREADGOLD

Jinx-smashing intentions combined with hopes of uprooting the Cougar "victory garden" which was so carefully planted last week, were uppermost in Duck varsity men's minds preparatory to the opening whistle of the Oregon-Washington State tilt in Pullman today. Game time is listed as 2 o'clock.

Only once in the 20-game rivalry over the past 40-year period have the Ducks grabbed off a victory on Rogers field. Despite the forlorn outlook which this past record presents, John Warren's gang of 28 gridders felt confident that they would ride out of the contest on the satisfying end of the score.

Because of their brilliant showing against Stanford last week, the unbeaten Cougars were on the fat end of betting odds. Babe Hollingbery watched his boys turn in a commendable 6 to 0 win at the Pal Alto stadium. This placed the Staters on an even footing with Oregon State as top teams in the circuit to date.

Special attention will have to be given Halfback Jay Stoves by the Duck defense. Stoves was the thorn in Stanford's side with his trusty right arm. He has made Cougar fans forget Billy Sewell's absence.

Kennedy Big Gun

Another big gun in the WSC backfield is Bob Kennedy, bruising fullback who gets out of his tracks with despatch. Combining Kennedy with the versatile Stoves, Hollingbery has a hard-running twosome.

Oregon's top-flight line will have its work cut out in facing the behemothic-Washington State forward wall. Kingpins among the Cougar "big seven" are End Nick Suseoff, Center Bill Remington, and Guard Bill Ward. Suseoff has been named on several premature all-coast lineups.

Counter-balancing the capable Washington State backfield, "Honest John" Warren, Duck mentor, has two units, either of which he might shoot at the Hollingberymen. The regular starting group consists of Len Surles, quarterback; Tom Roblin and Kenny Oliphant, halfbacks; and Roy (Tippy) Dyer, fullback.

Sophs May Start

Supplementing this veteran quartet, Warren has an all-sophomore bunch of kids which he might throw at the Cougars. News sources, reliably close to the coaching staff, had it that Warren might in this younger backfield wear down the WSC resistance before shooting in the above-named foursome.

At quarterback for this second-year unit is 200-pound Ray Blatchley; Halfbacks Bobby Reynolds, colored lad who showed up well against St. Marys; and Scotty Deeds, light but aggressive speedster; and at fullback, the hard-hitting Bill Davis.

The line will probably stack up as previously. That means Jim Shephard at left, Ed Moshofsky at left tackle, Floyd Rhea, left guard; Steve Bodner, center; Val Culwell, right guard; Dick Ashcom, right tackle; and Russ Nowling, right end.

Clamped Headlock

Last year the Cougars clamped a headlock on the Ducks, making them holler "uncle," and went home with a 3 to 0 triumph. In 1940 the two clubs fought to a

(Please turn to page five)

Three P.C.C. Grid Battles Rage Today

By BILL STRATTON

This week sees the second in this year's Pacific coast conference football schedule, with both Oregon teams rated as underdogs. Washington State is favored over the Webfoots, while California is expected to overcome Oregon State.

Washington State's victory over the Indians last week made them favorites over the Ducks, but Oregon's close battle against Tex Oliver's aviators in Portland last week, makes the odds close. Although Oregon State beat Montana last Saturday, they are rated under the California Bears. California has a gang of burly sophomores that appear plenty potent, and the Orangemen are scheduled for a rough time.

Southern California is rated over Pest Welch's Washington Huskies, but the odds are close and anything can happen. The Huskies beat little College of the Pacific last week, but this is Welch's initial test as a conference coach.

Other games scheduled—although not conference tilts—are UCLA vs. Navy Pre-Flight at Los Angeles, Stanford vs. Santa Clara at Palo Alto, and Montana vs. Brigham Young at Missoula.

Tex Oliver's all-American packed St. Mary's Pre-Flight team is rated over UCLA, with two victories and no losses to their credit; Montana, who beat Brigham Young 20 to 7 last year, should come through with another victory this season; while the ever-consistent Santa Clara aggregation is favored over Stanford.

EMERALD Sports

Page 4 DAILY EMERALD Saturday, October 3, 1942

Yanks Face St. Louis Today In Third World Series Game

With the series even up, the St. Louis Cardinals and the New York Yankees meet today, after one day for traveling, in the Yankee stadium in New York for the third game in the 1942 world series.

The Cardinals, as well as the National league in general, felt yesterday that they had the Yanks, who are out for their fourth series pennant, worried—especially after their near victory as a result of a four-run rally in the last inning of the first game and the 4 to 3 victory Thursday.

Yankee manager, Joe McCarthy's certain for moundman today, will be Spud Chandler; while St. Louis' manager, Southworth has to choose between his two top southpaws, Max Lanier and Ernie White.

White Feels Great

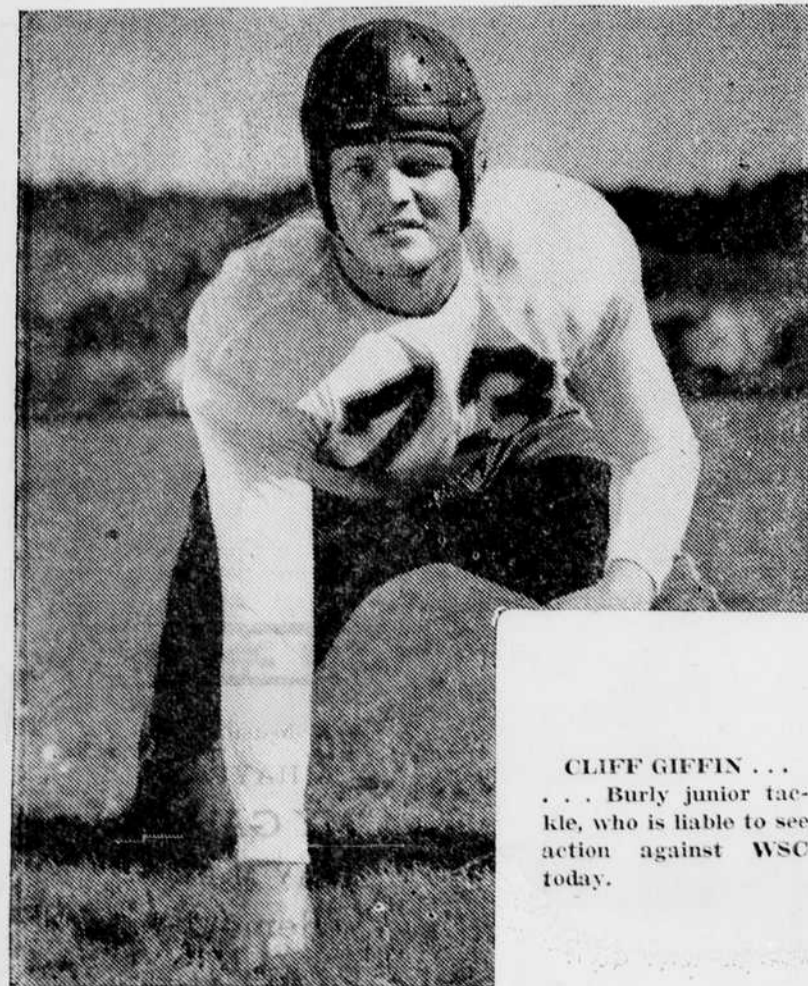
There is a probability that White would chuck because he

had told Southworth Thursday night that his arm felt great and he was ready for anything the Yanks had to offer.

Oregon's Joe Gordon has a good chance of being the goat of this series. He struck out five times for nine trips to the plate, and got one hit over second base, where Walker Cooper banged a double to score the first two St. Louis runs Thursday.

The two squads, while enroute from St. Louis to New York, didn't have the traveling conditions they are accustomed to ordinarily. They received a warning from Washington that they would have to travel just the same as anybody else, and they apparently did.

Harry Scott of Rice institute is men's representative for physical fitness in the Eighth area organization of civilian defense.



CLIFF GIFFIN . . .
. . . Burly junior tackle, who is liable to see action against WSC today.

McDONALD
MONTY WOOLLEY in
"The Pied Piper"
also
"Careful, Soft Shoulder"
with
VIRGINIA BRUCE

HEILIG
A Laff Favorite
"Bashful Bachelor"
LUM 'N' ABNER
Also
"Overland to Deadwood"
with CHARLES STUART CHECK