

## House Heads Elect Officers

New officers elected by heads of houses yesterday are Nelda Christenson, president; Mary Louise Vincent, vice-president; Ellie Engdahl, secretary; and Barbara Tuttle, treasurer, announced Winifred Green, former president, yesterday.

New house leaders listed by Winifred Green are: Alpha Chi Omega, Barbara Tuttle; Alpha Delta Pi, Marilyn Marshall; Alpha Gamma Delta, Watrine Spencer; Alpha Omicron Pi, Pauline Ewan; Alpha Phi, Gloria Difford; Alpha Xi Delta, Florence Cooley; Chi Omega, Helen Mullen; Delta Delta Delta, Mary Jane Dunn; Delta Gamma, Edith Borda; Gamma Phi Beta, Ellie Engdahl; Hendricks hall, Helen Holden; Highland house, Jane Huston.

Others are: Hilyard house, Ruth Baker; Kappa Alpha Theta, Nelda Christenson; Kappa Kappa Gamma, Marge Sawyer; Pi Beta Phi, Mary Louise Vincent; Sigma Kappa, Maxine Tripp; Susan Campbell hall, F. Deloraine Markwardt; University house, Lila Mae Furchner; Zeta Tau Alpha, Kathleen Fox; and Orides, Jeanne Smith.

## Dr Bee Requested

The general extension division has recently received a number of letters especially requesting that Dr. Lawrence S. Bee, assistant professor of sociology, open extension classes in his field in Klamath Falls this term. The classes were scheduled for winter term, but war conditions and unfavorable weather prevented their being given.

Plans are now being made to offer the two classes, sociology of the city and the family, as has been requested. In all probability one of the two-hour classes will be given in the late afternoon and one in the evening.

## Hendricks Elects

Hendricks hall last week chose its officers for the ensuing year. Officers elected and appointed are president, Helen Holden; vice-president, Mary Reimers; secretary, Peggy Kline; treasurer, Dorothy Ann Paddock; sergeant-at-arms, Verne Gunnison; social chairman, Jackie Wilkinson; and activities chairman, Margie Robinson.

## UO Prof Now Marine

Dr. Harold J. Noble, first lieutenant, United States Marine Corps and former member of the University's faculty, is now stationed at Camp Elliott, San Diego, California. Lieutenant Noble is in the intelligence service of the Marine Corps. He taught far-eastern history and Japanese while in the University faculty.

## Alpha Takes

(Continued from page four)  
series (Alphaman) called him out on a very questionable decision. The twelfth was sudden death. With two men on, Loyal Lang slashed a liner through the box, and Chuck Cutler proceeded to play it into a home run.  
Alpha hall.....9-4-3  
Sherry Ross.....6-8-6  
Holloman and Randall; Miller and H. Lawrence.

## Frosh Track

(Continued from page four)  
javelin and shot; Dave Smith, hurdles; Tom Hazard, 880. Three others, Bob Pearson, Millard Bird, and Don Asselstine, have had no previous experience and haven't selected their events as yet.  
There have been no separate freshman workouts. The green candidates have been working out with the varsity, jogging and generally getting into condition.

## Federal Talent Scouts Raid Oregon Campus

'Minute Men Movies' were taken on the campus yesterday when a camera crew from the U. S. treasury department visited the University to take news reel shots of Dr. Earl M. Pallett, executive-secretary and registrar, and four students prominent in activities.

Helen Angell, Phil Lowry, Don Walker and Russ Hudson took part, speaking on behalf of defense bonds. President Erb was originally scheduled to appear, but since he was out of town, Dr. Pallett, who is also air raid warden of the University, was chosen to take his place.

Oregon State and the University of Oregon are the only two universities to be represented in the series, since they originated the defense bond pledge drives. The movies will be shown throughout Oregon, and the best shots will be incorporated in news reels for nationwide release.

## George Rebec Essay Contest to End Friday

Essays for the George Rebec contest are due in the office of the philosophy department Friday, according to the head of the philosophy department, H. G. Townsend.

Judges chosen to pick the winning essay are G. N. Belknap, University editor; Professor E. C. Lesch, of the English department; and Professor C. B. Beall, of the language department.

## Greeks Pledge Two

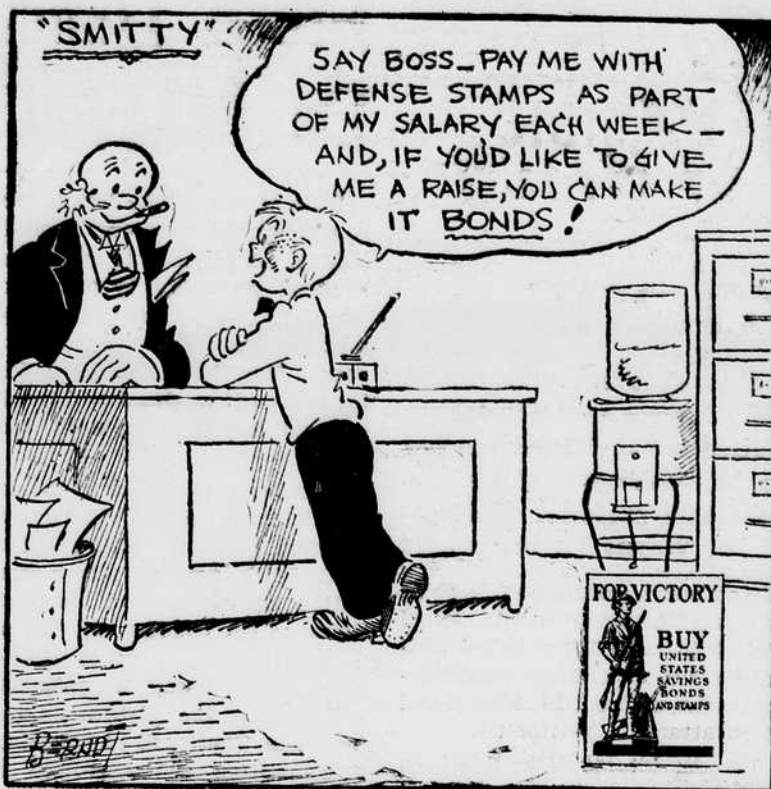
Fraternities recently pledged the following men: Warren Carkin, Sigma Chi; Theodore Bouck, Francis Bergstrom, Phi Kappa Psi; Stanley K. Dyer, Delta Upsilon; John Emerson, Phi Gamma Delta; Bob Odgers, Kappa Sigma; Maurice McDonald, Sigma Phi Epsilon; J. Robert Matteson, Alpha Tau Omega; J. Curtis Welborn, Sigma Alpha Epsilon; Bob Jackson, Pi Kappa Alpha; and Harry Haugsten, Beta Theta Pi.

## Cutler Pulls 'Superman'

(Continued on page five)  
again) battling out a 21 to 16 triumph. But every point he made was by the hard way.

The handball doubles found Les Anderson and Ed Moshofsky in absentia, so the Sherry Ross boys won the easy way. Ping pong was almost as easy as he and Tommy Galt blasted their way to an easy win, 21 to 4 and 21 to 3.

But there's some hope on the horizon. Cutler graduates in June.



## Broadway Hit Replaces Abandoned Canoe Fete

In his sunny, picture-filled office in the little drama studio behind Johnson hall, Horace Robinson is making final plans for what he hopes will be a 'near professional treatment' of the Kaufman-Gershwin musical Broadway hit, 'Of Thee I Sing.'

"It seemed the logical campus-wide choice since the canoe fete was abandoned, and since plans of one sort and another of 'Of Thee I Sing' have been made for the past two years," he said. Mr. Robinson also mentioned that there have been appeals from various sources to give a musical show whenever campus schedules permitted.

### Auxiliary

Since the McArthur court concert stage is too small, Mr. Robinson intends to use an auxiliary stage on the balcony level such as the one used in "Peer Gynt," which he directed. "The staging will be fairly simple," he said, "and the whole production will be popular and comic."

"Of Thee I Sing" was first produced on Broadway for one year and had a two-year tour. Its stars were William Gaxton and Victor Moore.

The play is a satiric series of pot shots at political procedure, particularly presidential campaigns.

### Past Plays

Mr. Robinson directed "With Fear and Trembling," a similar show in 1939. More recently his plays have been "Of Mice and Men," "George Washington Slept Here," "Goodbye Again," "Emperor Jones" and "Ethan Frome."

He has directed and taught in the University drama division for

**MCDONALD**  
Two Big Hits  
**WE WERE DANCING**  
With Norma Shearer and Melvin Douglas  
**NO HANDS ON THE CLOCK**  
With Chester Morris and Jean Parker

**REX**  
A 'MUST' PICTURE  
**THE ROAD TO GLORY**  
Frederick March  
Lionel Barrymore  
Warner Baxter  
Also  
SMALL TOWN DEB  
Jane Withers

**HEILIG**  
DON'T MISS  
Frederick March and  
Loretta Young in  
**BEDTIME STORY**

**MAYFLOWER**  
ELEVENTH AT RIDGE  
**INVASION**  
THE MADMEN OF JAPAN  
HITLER'S DUPES  
Also  
**RIOT SQUAD**  
With Richard Cromwell and Rita Quigley

## ADVERTISING MAJORS

To those of you who are interested in making advertising your future vocation, the Oregon Daily Emerald Business Office affords you an opportunity to gain practical experience in the field.

The activities of the Business Office cover advertising layout and copy, sales and account management. . . . Actual experience which you can coordinate with the theory taught in your daily class work.

Positions on the business staff are open to freshmen, sophomores, juniors, or seniors. Previous experience in selling or advertising is not absolutely necessary to qualify for a place in this department of the Emerald.

Students interested in advertising should not forego an opportunity of this kind. There are few student activities which offer direct contacts to the individual with the business world and the men who are active in its operations.

For further information inquire at the Oregon Daily Emerald business office, room 5, Journalism, between the hours of 1 and 5 o'clock any afternoon.

**SAVE MONEY!**

- Buy Articles
- Sell Articles
- Find Lost Items
- Locate Transportation
- What Have You?

**EMERALD CLASSIFIEDS**  
Phone 3300 — Ext. 354