

**Frolic Approaches**

The annual Christmas party of the speech division will be held in the AWS room at Gerlinger December 12 from 4 to 5:30, announced Kirt E. Montgomery, instructor in speech.

Students of all speech classes have been invited to the event. A short program will be presented and light refreshments will be served.

**VITAMINIZE**

for  
Tomorrow's  
Game  
with

Vitamin packed sea-  
foods to protect you  
from colds due to ex-  
posure and the rigors  
of the game.

Phone 2309

**NEWMAN'S**  
**Fish Market**  
39 E. Broadway

**MIRIAM**



Arlene Frances as Mary, mother of Jesus, will be one of the actors playing in "Journey to Jerusalem," educational activities board presentation. The film will be shown December 3 and 4 in Chapman hall. It will be free to all students on showing their educational activities card.

**Museum Open**

To accommodate Oregon alumni and visitors this week-end, the museum of natural history in Condon hall will be open Saturday afternoon from 1 to 4, and Sunday afternoon from 1 to 5, according to H. L. Robe, museum attendant.

**Yule Stage Film Showing Soon**

A filmed stage play, "Journey to Jerusalem," by Maxwell Anderson, will be presented in 207 Chapman hall, Wednesday and Thursday, December 3 and 4, by the educational activities office. Admission will be by activities card.

The movie is said to be an exact reproduction on film of the Broadway play with the original cast of 33 artists, and identical dialogue, costumes, and scenery. It was written by Maxwell Anderson, and staged by Elmer Rice, both Pulitzer prize winners.

Of the play, which tells of the pilgrimage to Jerusalem by the boy Jesus and his family, H. I. Phillips of the New York Sun said, "... as moving and inspiring a play as the New York theatre has shown in years." He also commended the character portrayals of the cast.

Wesley club will also show the picture Wednesday evening at 7:30 in the Methodist church. Tickets for this presentation will be sold to townspeople, faculty members, and children.

Wednesday's schedule runs: 2 to 3:30, 3:30 to 5, and 5 to 6:30 o'clock. Thursday's is: 4 to 5:30, 5:30 to 7 and 7 to 8:30.

**Torgeson Sounds Cry**

(Continued from page thirteen) in the back. He was paying off a political bet he had made Tuesday night with Steve Worth, Independent leader.

He had bet Worth that fewer than 825 students would rally to the ISA meeting in McArthur court Tuesday night. If more than that number appeared, Torgeson said, he would make a speech against the Greek bloc. Worth, on the other hand, was pledged to make a speech against the Independents if fewer than that number appeared.

**Loses Out**

Worth won the bet when the door check showed 875. The crowd that turned out Fri-

day morning to hear Torgeson pay off his bet filled the square between Commerce and Oregon and overflowed onto the sidewalk and parking. When Torgeson spoke of "We Independents," and "We of the ISA," the crowd cheered lustily.

A near-rift in political ranks, however, was caused when Torgeson, speaking of the "divine leadership of Steve Worth," said, "Although I have not yet caught Steve walking on the water, I heard him address Jean Spearow the other day as 'Disciple No. 10.'" Miss Spearow later approached Worth with, "What's the idea of putting me No. 10?"

Closing with a note tuned to the times, Torgeson said, "We are not only interested in annihilating the

**GREETINGS GRADS**

TROEHS again offers University students the finest of sporting goods and equipment.

- Ice Skates
- Skis
- Guns

Everything for the sports-minded sports goer.

**TROEH'S**

Corner 6th and Willamette



**Welcome Alums**



Here's hoping you win the game with flying colors, and have a wonderful week-end. Don't forget that the Bluebell Dairy Products will add to your stay.

**Eugene Farmer's Creamery**

"Visitors Always Welcome"

568 Olive St.

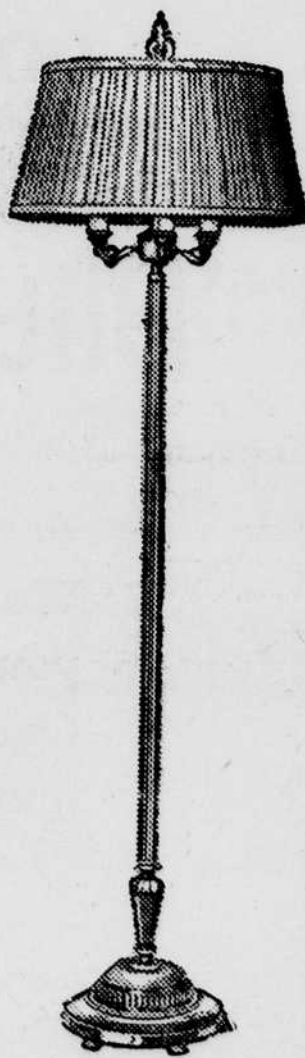
Phone 638

**Welcome Grads**



The campus shines with Homecoming preparations in your honor, Alumni. Furniture polish improves furniture, but odds and ends of furniture add even more to the room.

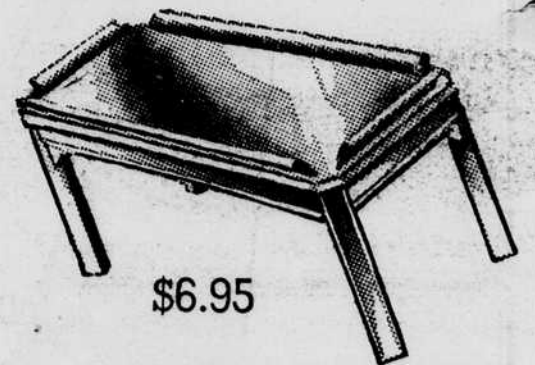
**Furniture For Your House**



**Lamps**

All our lamps are sturdy and dependable to give you the utmost in lighting. All are regular 3-way I.E.S. lamps.

\$10.75



\$6.95

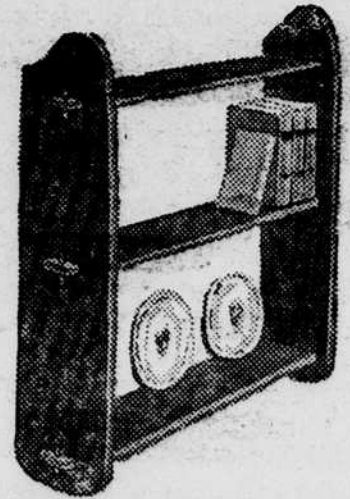
**Coffee Table**

Smart, good looking, and exceedingly practical because of the rim around the removable glass top. Special!

**Book Case**

A big help in any room's appearance is this book stand with ample space on the triple shelves for books or vases. Practical, good looking, and inexpensive.

\$9.75



**Johnson Furniture Co.**

649 WILLAMETTE

PHONE 2693

**REX**

Second Engagement!  
Jack Benny in

'Charley's Aunt'

— also —

'For Beauty's Sake'

with Marjorie Weaver, Ned Sparks and Joan Davis

**HEILIG**

See This Wild Animal Picture!

'Jungle Girl'

with Francis Gifford

— also —

Shirley Ross in

'Sailors on Leave'

**MCDONALD**

Two Big Features!

'Sundown'

with Gene Tierney and Bruce Cabot

— plus —

'Dance Hall'

with Carole Landis and Cesar Romero

**MAYFLOWER**

HELD OVER!

One Big Feature  
ABBOTT and COSTELLO

— in —

'KEEP THEM FLYING'