

Welcome Grads

let's
'Blitz the Beavers'

Come in and say "hello" . . . We are always glad to greet old friends. Let us show you our stock of distinctive Christmas gifts.



Azex, New Zealand and Australian Men's Sport Hats Novelty Style

THE HUB
Pursely Co.
696 Will. Ph. 2119

New Library Display Ready on Second Floor

A new display has been put up on the second floor of the University library immediately outside the Nash room. The display illustrates primitive paper making from bark.

The samples shown are from bark paper or that which is sometimes called tapa cloth, and the designs printed on them are from natural dyes. These samples were extracted from a book written by the famous Dard Hunter.

According to Beverley Caverhill, assistant reserve librarian, "Mr. Hunter not only wrote the text and collected the rare specimens of tapa, but also designed and cast the type, set the type and printed with simple equipment on paper made by himself."

Departmental Displays Line Johnson's Walls

Six illustrated displays line the walls of Johnson hall's first floor lobby, arranged by Frankie Nelson, Homecoming display committee chairman. They were contributed by schools and departments of the University.

The science school produced a painted sign featuring the return of pure science courses to the University. The library sent one giving a word and picture story of its short history and its many special collections.

Others contributing were the schools of business administration, education, and physical education. The main statistical display shows the average and total amounts of money and percentages of self-support by University students.

Other members of the display committee are Dorothy Rount, Bill Lilly, and Barbara Lamb.

Frosh Touchoff Yearly Duties

Employing brooms, a mop bucket, rags, and finally a sweat shirt, 20 freshmen under the watchful eyes of the Order of the "O" polished, then knelt to kiss, the Oregon seal yesterday at 12:45.

Two cans of brass polish were consumed and more than one pair of frosh pants suffered as the boys crept on hands and knees around the sacred emblem.

Immediately following the traditional washing the frosh were transported to Skinner's butte where they painted the "O" there with the seats of their trousers and began the guard that will be kept over the "O" until Sunday noon.

The schedule of hours to be observed by houses and organizations follows:

Saturday morning: Theta Chi, Canard club, 12:30-2:30; Delta Tau Delta, 2:30-4:30; Chi Psi, Zeta hall, 4:30-6:30; Delta Upsilon, 6:30-8:30; Kappa Sigma, 8:30-10:30; Phi Gamma Delta, 10:30-12:30.

Saturday afternoon: Kirkwood club, Sigma Phi Epsilon, 12:30-2:30; Phi Delta Theta, 4:30-6:30; Omega hall, 6:30-8:30; Gamma hall, 8:30-10:30; Phi Kappa Psi, 10:30-12:30.

Sunday morning: Phi Sigma Kappa, 12:30-2:30; Sigma Alpha Epsilon, 4:30-6:30; Sherry Ross hall, 6:30-8:30; Sigma Alpha Mu, 8:30-10:30; Sigma Chi, 10:30-12.

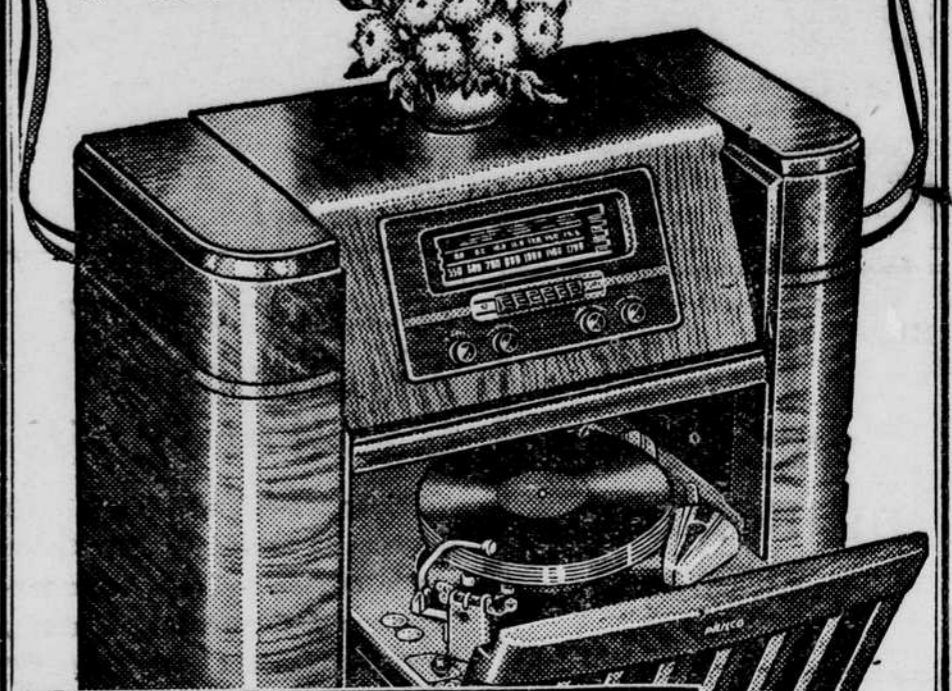
AAA to Dance Friday

The Architecture and Allied Arts league will give another afternoon dance next Friday in the Little Art gallery according to Woody Ichihashi, president of the organization.

WELCOME ALUMS "BLITZ THE BEAVERS"

America's Biggest-Selling Radio-Phonograph...

PHILCO MODEL 1008



Plays Any Record on a Beam of Light!

A sensational value at a popular price! No needles to change . . . records last 7 times longer! New Philco Automatic Record Changer. Exclusive Stroboscope Pitch and Tempo Control. Electric Push-Button Tuning. Walnut Tilt-Front Cabinet. Hurry . . . our quantity is limited!

\$177.50

Ask about our easy terms and trade-in allowances!

HURRY—Quantity Limited!

GARRETT'S APPLIANCE CO.

Miner Building

Phone 2706

Welcomes Alums



MR. & MRS. NEWT

Howdy Neighbor—right nice seein' you in these parts agin . . . course you rightly know that Neighbor Newt's Pub is the place to go to set a spell & catch a little collich atmosphere . . . crackerjack vittles too . . . leastwise best in this neck of the woods for the price . . . after we map up them varmint from down the road a pice . . . come in and set

"ON THE CAMPUS"

For Your Convenience in Getting Around the Campus

courtesy of
New Service Laundry

You will also find it convenient when you want the best in laundering to

CALL
825

MEN'S LIVING ORGANIZATIONS

Alpha Hall, 1320 E. 14th	Ext 260
Alpha Tau Omega, 1306 E. 18th	703
Beta Theta Pi, 1009 Patterson	1024
Campbell Club, 1332 Kincaid	634-J
Canard Club, 1410 Alder	854
Chi Psi, 1018 Hilyard	1320
Delta Tau Delta, 1883 University	940
Delta Upsilon, 754 E. 13th	1123
Gamma Hall, 1411 Onyx	Ext 342
Kappa Sigma, 793 E 11th	2820
Kirkwood Co-op, 727 E. 13th	386
Omega Hall, 1495 Onyx	Ext 275
Phi Delta Theta, 1472 Kincaid	318
Phi Gamma Delta, 1367 Alder	660
Phi Sigma Kappa, 1335 Alder	1906
Pi Kappa Alpha, 1436 Alder	1665
Sherry Ross Hall, 1319 E. 15th	Ext 324
Sigma Alpha Epsilon, 812 E. 14th	2800
Sigma Alpha Mu, 668 E. 13th	2893
Sigma Chi, 808 E 13th	565
Sigma Hall, 1479 Onyx	Ext 329
Sigma Nu, 763 E. 11th	324
Sigma Phi Epsilon, 849 E. 11th	700
Theta Chi, 1151 E. 19th	1920
Yeomen, Gerlinger Hall	Ext 266
Zeta Hall, 1427 Onyx	Ext 270

WOMEN'S LIVING ORGANIZATIONS

Alpha Chi Omega, 850 E. 15th	1307
Alpha Delta Pi, 1670 Alder	1309
Alpha Gamma Delta, 1648 Alder	1780
Alpha Omicron Pi, 1680 Alder	2840
Alpha Phi, 1050 Hilyard	3200
Alpha Xi Delta, 1316 Alder	569
Chi Omega, 1461 Alder	729
Delta Delta Delta, 1987 University	2900
Delta Gamma, 1548 Alder	2306
Emerald House, 1390 Alder	Ext 200
Gamma Phi Beta, 1021 Hilyard	772
Hendricks Hall, Campus	Ext 283
Highland House, 1335 Onyx	3818
Hilyard House, 1213 Hilyard	962
Kappa Alpha Theta, 791 E 15th	2340
Kappa Kappa Gamma, 821 E. 15th	204
Pi Beta Phi, 1518 Kincaid	947
Sigma Kappa, 1716 Alder	1516
Mary Spiller Annex, Campus	Ext 346
Susan Campbell Hall, Campus	Ext 386
University House, 1415 University	2884
Zeta Tau Alpha, 818 E. 15th	2788