

New Publicity Head Announced

Payne Picked To Promote Alumni Fete

New promotion director for the Homecoming festivities will be Ancil Payne, junior in advertising, Russ Hudson, general chairman for the annual alumni fete, announced Wednesday. Payne will replace Ep Hoyt, who was called from the campus to a convention of Sigma Delta Chi, national professional journalistic fraternity, in New Orleans, Louisiana.

"Payne was picked on merit," said Hudson, "and with his previous experience in radio and promotion work is in a position to do the job well."

"The promotion committee will get the grads here," said Payne, when describing proposed activities of the committee. "We shall try to see that they all have a good time. I am sure that the present committees will continue the excellent work that they have begun."

The promotion chairman is in direct charge of the committees handling the Homecoming theme, mail advertising, state publicity, radio promotion, and hospitality. The hospitality committee has arranged for the selection of a hostess for the alumni fete. She will be selected today by the football squad.

Bird Busters Gather Thursday Afternoon

University Badminton club will meet Thursday at 7:30 p.m. in Gerlinger hall. Outside students are invited, according to Dorothy Hermann, acting president.

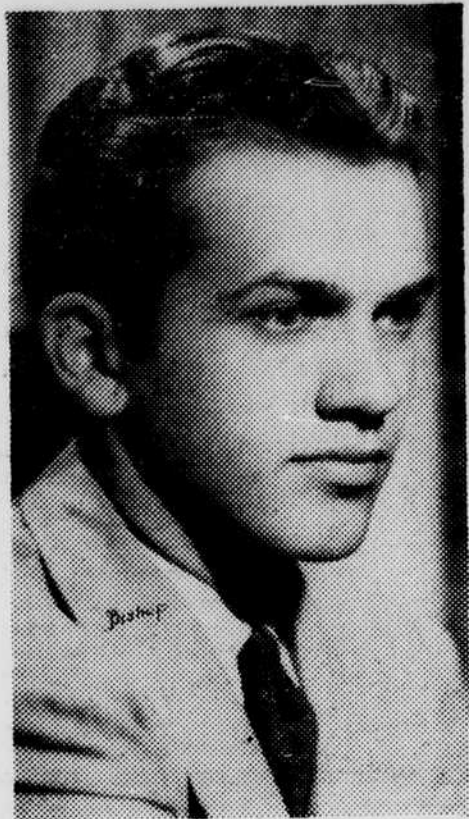
Shuttlecocks will be furnished, but students must bring their own rackets.

At the recent business meeting of the club plans will be made for games with badminton clubs of other colleges, a policy for the year will be established, and members will elect permanent officers. Miss Marian Maynard is the club's adviser.

Dean Morris Speaks On America's Place

Dean Victor P. Morris of the school of business administration will point out "America's Place in World Affairs" to the Women's Library club of Klamath Falls Monday afternoon. He will speak at the Credit Men's meeting in the evening.

'MOON' BOARDER



Dick Turner plays Dr. Alan Stevens, a boarder with the Rimplegars, eccentric family in "Three Cornered Moon," a University theater drama to be presented Wednesday, November 12. He has played in "George Washington Slept Here" and "Taming of the Shrew."

University Theater Begins Whimsically

Wednesday, November 12, will be the opening date for the four-day run of "Three Cornered Moon," rather than Tuesday, November 12, as was previously reported in the Emerald. This is the first University theater production of the year.

"Three Cornered Moon" is the whimsical story of the eccentric Rimplegar family. Prominent among the characters is one Dr. Alan Stevens, a boarder at the Rimplegar's, played by Dick Turner.

Turner, senior at the University, played in last year's production of "George Washington Slept Here" and in the Guild Hall presentation of "Taming of the Shrew." He has also done considerable work in past radio productions.

Season tickets are still available at the University theater box office. General admission tickets are on sale from 10 a.m. until 5 p.m. until the final production date.

Mayflower Bills New Spanish Film

The Spanish film, "El Rancho Chico" will be presented at 4 p.m. Friday, November 14, at the Mayflower theater.

The picture is in Spanish with the same cast as the movie last year, "En El Rancho Grande," according to Dr. Leavitt Olds Wright, head of the Spanish department.

National Head At ADS Meet

Lou Townsend, assistant vice-president of the Bank of America and national president of Alpha Delta Sigma, will be guest speaker at the W. F. G. Thacher chapter of the honorary at 6 o'clock tonight at the College Side inn. Another highlight of the evening will be the pledging of eight new members to the men's national professional advertising honorary.

W.F.G. Thacher, adviser to the group, and Jim Frost, president of the local chapter, will meet Mr. Townsend at Oregon State college at noon after he completes one of a series of talks there.

Third Year Card Sale Begins Next Monday

Junior class cards will go on sale Monday, November 10, for a five-day period.

Class members voted to reopen sale of the cards at a recent meeting, but plans fell through when no organization could be found to handle the selling.

Pat Cloud, class president, still has some applications for Junior weekend work. He expects to call another meeting sometime this fall, at which time the blanks will be distributed.

Dodos Sprout Wings In CPT Primary Exam

Testing their wings for the first time, eight more primary civilian pilot training students have soloed, according to James C. Stovall, coordinator. Over half the class has soloed to date.

New soloists are: Ted Pilip, Bill Johns, Chester Sergeant, and Joe Skibinski, students of Steve Hathaway; Ken Sawyer and Jack Gertson; instructed by Kneeland Stone; Orville Varty, taught by Harold Sander; and Gordon Childs, student of Aubrey Sander.

St. Thomas college, St. Paul, has a "math help" room in which counselors offer special assistance to freshmen in chemistry and mathematics.

SAM Located In New Home

After several days of negotiations, arrangements have been made for the fire-plagued Sigma Alpha Mu men to spend the rest of the school year in the house near the corner of East Tenth and Hilyard which was occupied last year by Phi Kappa Psi.

"There are accommodations for all the men, and metal fire escapes as well," said Morry Stein, SAM president, yesterday.

The property, owned by Dr. W. H. Dale, is handled by the Mary R. Miles real estate agency.

Miss Henryette C. Lauer, '98, passed away August 22.

Shopping the Town

By LEITH BROWN

White Front . . .

If you've been looking for a perfectly tailored shirt, Hedon's Tuxedo shirt is your answer. An unusual material with a diagonal twill. Made long to keep it from pulling out. Dead white . . . pointed lapels . . . pearl buttons . . . short or long sleeves. . . Buy it at Gordon's for \$2.95 and \$3.95.

Swish and Swank . . .

A pink brocaded satin jacket to wear with a formal skirt sounds like make-believe but it's real at Kaufman's. Open at the throat with a pointed collar—three cloth buttons down the front. A peplum effect to give you a nice hip line. Peaches and cream for \$3.95.

Suited to Your Taste . . .

Is this brown-checked jerkin suit in Miller's sportswear department. The skirt has three box pleats in both the front and back. The jerkin top is double-breasted and has 12 tiny brown velveteen covered buttons in two rows down the front. The waist is fitted to give extra style. Made by Petti for \$16.95.

Shades of Sonja Henie . . .

You'll find new fun for your life at the ice palladium which recently opened and Montgomery Wards have the wherefor to do with. Shoe skates in white or black, starting at \$2.98 (surprise), whether figure or hockey skates. Hardened steel blades that are all sharpened and ready to go. Genuine top grain leather in the tops and soles of the shoes. For those of you who know—the cups and tubes are placed to give you proper arch support and balance. Smooth skating!

For Men in Arms . . .

We mean Uncle Sam's soldiers and sailors . . . and here's your chance to lend a hand—just like it says in all the magazines. Instead of twiddling your thumbs during house meetings, spend those spare minutes knitting a sweater, helmet, or mittens. You can find all about how to do it from Miss Azchary at the Broadway. You buy the yarn and receive instructions free. It's a national campaign besides being a good idea.

Thanks for Thanksgiving . . .

Today starts Beard's annual Thanksgiving sale which is really a big fat opportunity for a gal on a budget. Date dresses of all types and colors in junior and misses sizes. Mademoiselle mode's for \$11.00. It's true . . . see for yourself.

Snug As a Bug . . .

And you'll be twice as cozy in this teddy-bear cloth reversible at Hadley's. Red or green wool in a solid color and the teddy-bear cloth in white. Big Pearl buttons on the colored strip running down the front. The pointed collar is also in the solid color making it all very something you want to own. Made in a box style for \$24.95.

Chains That Bind You . . .

And you'll love them. Long chains to wear around your neck with sweaters and dressy wools. Different! All styles of chains in either silver or gold-flat narrow types, interlocking circlets and rope chains. Just the right length, too. They are at Russell's jewelry counter for \$1.00 and \$1.95.

Masculine Weakness . . .

Even if he is the big strong type and was runner-up in the Whiskerino contest—two to one he likes the scent of your cologne. Admit it or not, most men would like to use it themselves and here is their chance. Steeplechase made by Courtney is a scent especially for men. It comes in a porcelain jug for \$3.00. Wonderful for birthday or initiation gifts. See Courtney's display at Tiffany-Davis.



DESIGNED FOR MISS COSMOPOLITAN

Helene Nash

as seen in Mademoiselle

Happy answer to what to wear on happy occasions. Smartly simple, cleverly draped with distinctive jeweled belt.

Shown in American Green \$16.95

BEARD'S

DISTINCTIVE APPAREL AND ACCESSORIES



WELL GROOMED WELL DATED

Permanents \$2.50 and up. Includes haircut and style. Every Oregon coed knows that well-grooming begins with the hair. . . . Before that weekend date have your hair done at the

KOLTSCH BEAUTY SALON

60 W. 10th Phone 405