

Coed of the Week Prexy Rohda Harkson Admits No Pet Peeves

By JANET WAGSTAFF

Found: one girl who cannot think of one personal pet peeve. Which shows that Rohda Harkson, Kwama president and Oregon's coed of the week is just naturally amiable.

"I'm awfully sorry," she said in a sincere tone, looking a little worried as if she should have

some dislikes, "but I just can't think of anything I especially dislike."

Likes All Sports

But from the enthusiastic sparkle which appeared in her hazel eyes a minute later as she mentioned riflery it was apparent that she has a great fondness for that sport. She lists skeet and trap shooting as her favorite sports, adding that she often goes duck hunting with her father. She fishes, too, and says she likes to try any sport even though she's not always good at it.

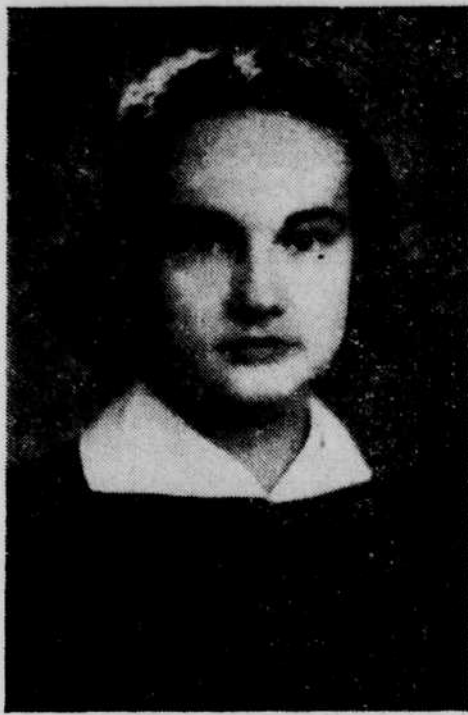
That Rohda likes people is very evident from the interest with which she greets them. During her interview she asked nearly as many questions as she answered. This is perhaps explained by her ambitions since she is majoring in social sciences preparatory for social service work.

Always Busy

As further practice for her future employment she spends her spare time working at the Eugene Red Cross headquarters. "Besides typing, I do all sorts of things; I even make beds sometimes," she finished with a little chuckle.

When asked about gadget jewelry Rohda gave a definite negative shake of her brownish-blond head and went on record, "No, I just don't use costume jewelry." She pointed out that a watch and sorority bracelet on her wrists and a Kwama pin at the left of her Pi Phi arrow were the only jewelry effects she wore.

KWAMA LEADER



Miss Rohda Harkson, coed of the week, heads Oregon's white sweater girls.

Delta Gamma

Delta Gamma pledges were given a welcoming dessert by their alumnae, Tuesday night, at the home of Mrs. Rex Underwood.

An annual occasion during which DG alums meet new pledges to the sorority, this year's meeting featured a piano recital.

day. Webfoot sassyety will really hit Portland en mass Saturday eve when the brothers in some 18 fraternities have informal get-togethers, details of which are too numerous to mention, and the rally dance is held at Jantzen with the music of Stanley Kenton and his band from Balboa Beach.

Oh, diary, we had a dessert again last night as usual. The Sigma Chis with Pi Beta Phi; Highland house-Yeomen; Kappa Kappa Gamma-Sigma Phi Epsilon; Sigma Kappa-Phi Sigma Kappa; Delta Gamma-Theta Chi; University house-Kirkwood cop; Susan Campbell hall-Pi Kappa Alpha.

More Desserts

Alpha Tau Omega-Kappa Alpha Theta; Sigma Alpha Epsilon-Chi Omega; Sigma Alpha Mu-Alpha Gamma Delta; Alpha Chi Omega-Sigma Nu; Alpha Delta Pi-Delta Upsilon; Hendricks hall-Gamma hall; Alpha Phi-Chi Psi; Alpha Xi Delta-Canard club; Gamma Phi Beta-Phi Delta Theta; Delta Delta Delta-Phi Gamma Delta and Alpha Omicron Pi-Delta Tau Delta.

Diary Tells Of Weekend City Doings

By LOIS HULSER

Dear Diary: This week finally comes our sojourn to Portland for the big game with all the trimmings. This place will be a ghost town with only the boys of the law school left browsing in Fenton hall.

Beginning Friday noon, provided you don't have a quiz in the aft (and it's being done) you'll be among the ducks starting by train, bus and jalopy for the metropolis. These lucky people will be joined by their less fortunate pals who will roll into the Portland station in the eve.

Rally Dance Saturday

At any rate Saturday with luncheons, the game and finally the rally dance is the real holi-

Dating Duds Go Dancing

Whether you went tea dancing to Ted Fio Rito or to Willamette park Saturday night you noticed that . . . Mildred Meany rates in black velveteen with white heart buttons . . . Aldine Gates swirls in a dark red accordion pleated dress with lei beads . . . Yvonne Torgler dances in black velveteen with a blue sequin band around hemline . . . Dottie Havens, SDX Queen, looks smooth in grey wool plus two huge orchids . . . Hilda Rohrback likes light blue jersey—long sleeves and torso . . . Betty Fryer sparkles in black with sequin bands on neck and hip lines . . . Mary Jane Rabbe gives another vote for black dresses for tea dancing . . . Kay Daugherty elects velveteen with red, green and blue ribbon stripes . . . Marge Curtis likes her diamonds—huge conversation pin for her date dress . . . Bobbie Sinclair has one of those vogue creations with fur pockets and collar on blue-green wool dress.

—Jean Frideger.

SWANK in SUEDE

Dutch-style, pillbox, and tam hats in suede to wear with your fur or sport coat. You'll need a hat for the game.

Dorothy Duree

Walling Building

HATS of DISTINCTION
"If it's correct . . . we have it . . . If we have it . . . it's correct."
The **BONNET NOOK**
907 Willamette

Russell's
POILS FOR YOU GOILS
Pearls to warm the heart . . . 60" single strands of **BIG FAT** ones or six small strands of teeny baby ones entwined. You can hitch 'em about your swan-like neck twice't or thrice't; or get glamour and let 'em hang plumb to your dimpled knees.
\$1.00 and \$1.95

We suggest **LUCIEN LELONG'S OUTDOOR PERFUME**

Carefree

● If you are the girl who is at home on the green, the bridge path, the deck of a sloop, or at the wheel of a roadster, grand "Carefree" Perfume was made especially for you.
\$5, \$7.50
Purse Flacon \$1.25

"Carefree" Cologne . . . a perfect companion for the perfume, and for YOU. \$2, \$3.75

TIFFANY-DAVIS DRUG CO.

HEILIG
See This Exciting Drama **'Parachute Battalion'** with Robert Preston and Nancy Kelly — also — Charles Starrett in **'Prairie Strange'**

Dorothy Duree
Walling Building

SUZETTE ORIGINAL SNIP-IT* SLIPS

The superb classic lines of this Snip-It will add glamour to your favorite fashions.

Enjoy the convenience of the adjustable non-raveling hem—the comfort of the snug Talon zippered dressmaker top and the full no-ride skirt. Sizes 32 to 40. All colors.

IN LONG WEARING Celanese* CLAIRANESE RAYON TAFFETA

\$2.50

H. Gordon & Co.
EUGENE OWNED, WITH NEW YORK BUYING CONNECTION

MAYFLOWER
ELEVENTH AT ALDER
MOVED OVER!
'Bad Lands of Dakota'
with Robert Stack and Richard Dix
— also —
'Merry Island'

CLASSIFIED ADS

READER ADS
Ten words minimum accepted. First insertion 2c per word. Subsequent insertions 1c per word.

DISPLAY ADS
Flat rate 37c column inch
Frequency rate (entire term):
35c per column inch one time a week,
34c per column inch twice or more a week.

Ads will be taken over the telephone on a charge basis if the advertiser is a subscriber to the phone.

Mailed advertisements must have sufficient remittance enclosed to cover definite number of insertions.

Ads must be in Emerald business office no later than 6 p.m. prior to the day of insertion.

● Lost
BROWN and white collie pup. Answers to name of Rowdy. Phone 171-M.