

# Child Morale Shaken By the Easter Rabbit

By MARY ANN CAMPBELL

This dreadful Easter bunny legend seems to be almost as pernicious and all-prevailing as the Santa Claus tale, and is quite as useful for fooling little children. Since it isn't fair to go about fooling little children, with such legends as these, the practice ought to be severely condemned and stopped.

Think how puzzling to the infant mind to hear the Easter bunny comes to each house on its rounds, leaving eggs, when downtown, in every window, there are dozens of Easter bunnies, alive, chocolate, or made of plush and cardboard.

### Pink and Blue Rabbits

Besides, the sight of a florist's window full of pink and blue and green rabbits will instantly un-

*(Continued on page five)*

# Saunders-Vogel Rites Are Sunday

When the 5 o'clock whistle blows tonight, Miss Gladys Saunders, secretary to Miss Janet Smith in the employment office, will take her art magazines out of her desk drawer, put on her coat, and lock up the office for the last time.

Sunday she will be married in Eugene to Marion P. (Pete) Vogel, junior standing pre-med student at the University, and the couple will leave next week for Alaska, where Pete is going to work as an electrical engineer in the aeronautical national defense program either in Anchorage or Fairbanks.

Miss Saunders, employment secretary's secretary since December 3, 1940, was graduated with a B.S. degree in architecture and allied arts in 1939. She has studied art in Los Angeles since, which explains her art magazines and the Sunday New York Times she subscribes to for the art sections.

Miss Edith Pearson, who has attended the University also, is Miss Smith's choice for successor to the departing secretary. Miss Pearson has worked in department stores in Eugene and Portland, especially as the head of book rental departments.

# Try A Gleaming Red Straw Hat In Spring Sun

Fashion's Easter bunny is all ears, and she definitely has her head out of the box. According to Carmel Snow, editor in chief of Harper's Bazaar, peplums, bodices, polka dots, "twilight" dresses, small waists, trim suits, and ethereal scarves are standing on the spring fashion dais.

Miss Snow is all for delicate blouses in jersey and cotton, country skirts and slacks, woody green, cinnamon brown, beiges and white. And if there's one thing Miss Snow thinks is absolutely requisite, it's a red straw hat. She thinks it will gleam in the spring sunshine, as hay does in the autumn.

A waffled piquet coat is another of Miss Snow's finds; she suggests them in flag blue and dull geranium red. Slip a flag blue waffled coat over a bright red cotton town dress, and what do you have—a following!

Back to school; Sue Sawyer's flamingo compliment to the day is a batiste blouse, soft and shimmering—she doesn't tuck it in—and wears it over a bright red printed skirt; Winie Brown's svelte blue corduroy suit has bright silver buttons climbing up the top; Jane Doyle's gay candy cane dress swirls at the bottom with a big piquet band; Jean Crite's fitted pink coat is like finding an Easter egg in Oregon's green grass; Margie Major's in a lime and white striped cotton dress with wide green buttons.

John B. Waite, professor of criminal law at the University of Michigan, is a bow tie addict. The other day 100 of 130 freshmen in one of his classes showed up wearing bows.

## FRED'S CAMPUS SHOP

Men's Haberdashery  
by  
Wilson Brothers  
Across from Sigma Chi  
Cleaning Ph. 3141

# Say It With Flowers On Easter Morning

By PHYLLIS FOSTER

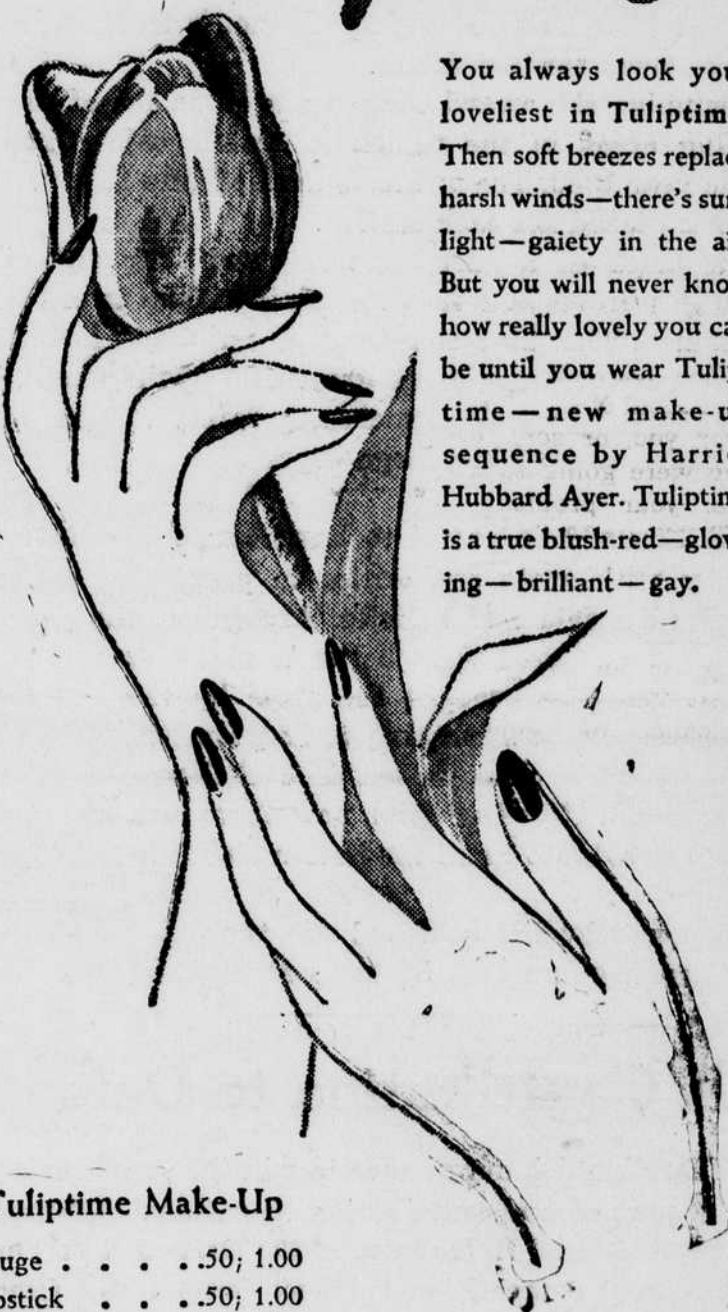
Easter time is the time for eggs, bunnies, and chicks—but that's not all. What would Easter be without flowers? Spring hats would be at a loss to say nothing of milady as she starts her Easter morn.

Merely because Mother won't be on the campus this Easter or you won't be home, don't forget her. A local flower shop suggests telegraphing her a plant or corsage. They offer this personalized service to almost any place in the United States. A plant suggested for mothers is the azalea which may be transplanted in her garden after she has it inside for several weeks.

Easter lilies will always reign supreme. This year Oregon grown lily plants are available which

have been sent from the coast. Formerly the bulbs came from Japan; however, these new plants are noted for their deep foliage and wide flowers which sometimes measure six inches across. Cold winds from the Pacific make  
*(Please turn to page five)*

# Charm with Tuliptime



You always look your loveliest in Tuliptime. Then soft breezes replace harsh winds—there's sunlight—gaiety in the air. But you will never know how really lovely you can be until you wear Tuliptime—new make-up sequence by Harriet Hubbard Ayer. Tuliptime is a true blush-red—glowing—brilliant—gay.

### Tuliptime Make-Up

- Rouge . . . .50; 1.00
- Lipstick . . .50; 1.00
- Nail Enamel . .35; .65
- Face Powder . . . 1.50

*Eugene's Own Store*  
**Russell's**



# Important Announcement

Large shipments of play clothes are here now—  
Visit our campus shop  
(Imola's) or see them at  
our shop downtown.

## H. Gordon & Co.

APPAREL FURS TOILETRIES  
MILLINERY ACCESSORIES  
1050 Willamette

*More than a panty!  
Less than a girdle!*  
**LATON and RAYON PANTIES**  
*for active young bodies!*



**39c values!**

at  
Wards  
for only **29c**

They fit like a second skin, for elastic laton is knitted in with the rayon! Easy to wash! Small, medium, and large!

**Montgomery  
Ward**

1059 Willamette Ph. 4200

## COKE DATES

You will certainly feel wonderful, and you will look lovely in a new

## PLEATED SKIRT

with a  
**BLOUSE**  
to match.

Drop in today for a look at our new spring styles.

2.95 to 5.95



**Hadley's**

1004 Will. St. Phone 633