

DUCK TRACKS

By ELBERT HAWKINS
Co-Sports Editor
Oregon Daily Emerald

Remember those wild basket-slinging bees Hobby Hobson's tall Firs staged with Hec Edmundson's fast breaking Washingtons at the Igloo last year?

The 21 points these two quintets bombed into the basket in approximately four minutes isn't a good example of their average pace but it shows what can happen when two basket-tossing clubs get together. And the way McArthur court's capacity crowd roared its approval during those two nights . . . it showed how popular the fast break is around these parts.

Well, tonight we're going to see another one of those naturals because the participants play the running type of ball and they're apt to run and cast off and run and cast off. In general they'll fill the air with a veritable shower of shots.

It'll Be Old vs. New

The scrap is even more of a natural because it pits the heart of last year's national championship Webfoots and all of their color against Hobson's 1940 quintet which is out to defend those honors of '39—the northern division, coast, western, and national titles.

Oregon's varsity quintet will have the edge in smoothness and condition because it is working out daily, but Bobby Anet's Rubenstein Oregonians have the experience . . . what with all-Americans Laddie Gale and Anet, all-coast Wally Johansen, all-northern division Dave Silver, and Jack Butterworth, who was good enough to play for Bill Reinhart at George Washington university, one of the eastern hoop powers.

"We'll whip them," says Coach Bobby Anet and he's the boy who predicted Oregon's national title last winter before it ever happened. Bobby has such profound confidence in the ability of his mates he sparks them into outscoring everything in sight. The last college game Bobby, Laddie Gale, Slim Wintermute, Wally Johansen, and company lost last year was at Corvallis against Oregon State.

Don't Sell 'Em Short

Our point is don't sell Bobby's Oregonians short out there tonight. Rubenstein's quintet took a terrific jolt at the center position when all-American Slim Wintermute turned pro, but Anet immediately turned up with a surprise package in this boy Jack Butterworth, declaring "he can play on my team anytime."

Oregon's whirling dervish, Ted Sarpola, is rated by men who know as the most loose-jointed, and most colorful shot-maker on the coast. He can shoot the ball from anywhere, including between his legs. But Butterworth turned up with a shot at the Igloo last week against SOCE which fooled even the Sarpola followers . . . it was a brand new motion, something apparently not even in the varied repertoire of Sarpola, the whirling dervish.

The Butterworth Shot

Here's approximately the way Butterworth did it . . . dribbling on a fast break into enemy territory he was confronted by two defense men. Butterworth cut loose at the foul line on a flying broad jump—that's just what it was—toward the basket. In midair

UO Gridders Go Into Huddle Pick All-Opponent Eleven

OREGON WEBFOOT'S ALL-OPPONENT TEAM

- LE—Bill Marx, Washington.
- RE—John Leovich, Oregon State.
- LT—Stan Anderson, Stanford.
- RT—Lee Artoe, California.
- LG—Harry Smith, Southern California.
- RG—Eberle Schultz, Oregon State.
- C—Rudy Mucha, Washington.
- Q—Bob Hoffman, Southern California.
- LH—Dean McAdams, Washington.
- RH—Ambrose Schindler, Southern California.
- F—Norm Standlee, Stanford.

(Editor's note: Asked by the Emerald sports staff to select an all-opponent team, the Oregon Webfoots met at the "Order of the O" meeting yesterday, and with President Bob Smith presiding, chose this eleven. Here it is, the Oregon halfback presenting it.)

Southern Cal and Washington shared honors in the selection of Oregon's all-opponent team yesterday by placing three men each.

End Bill Marx, Halfback Dean McAdams, and Center Rudy Mucha of Washington received the nod at their respective positions, and Guard Harry Smith, Quarterback Bob Hoffman, and Halfback Amby Schindler were chosen from USC.

Staters Place Two

Oregon State gained two of the other five all-star spots, Stanford two, and California one. Guard Eberle Schultz and End John Leovich were the Beavers chosen, and Stan Anderson, tackle, and Norm Standlee, fullback, represented Stanford. Lee Artoe, tackle, was the sole Californian to make the team.

Standlee and Mucha were the only players to receive a unanimous ballot. Other players receiving a high total of votes were Schultz, Hoffman, and Marx.

The all-opponent team was selected yesterday by Webfoot regulars at an Order of the "O" meeting at the Sigma Nu house. Although only a first team was chosen, a number of outstanding players were accorded honorable mention.

Those gaining this rating were Al Kreuger, end, USC; Jay McDowell, end, Washington; Phil Gaspar, tackle, USC; Ben Sohn, guard, USC; Earl Younce, guard, OSC; Morrie Kohler, halfback, OSC; Kenny Washington, halfback, UCLA; Spook Canadeo, halfback, Gonzaga; Ray Schlosser, center, Gonzaga.

Wicks, Theta Chi, threw J. Bosch, ATO, 4:58.

115-Pound

The results:
135-pound class—E. Cobb, ATO, threw J. Lakefish, SAM, 0:57; G. Crymes, Canard, threw B. Barnes, SAE, 1:15; B. Will, Sig Nu, defaulted to D. Hanen, Sig Chi; G. McCarthy, Ind., threw G. Eaton, ATO, 1:15; E. Silva, Theta Chi, decision A. Childs, ATO; D. Walwyn, Alpha, threw E. Wheeler, Phi Delt, 1:15.
K. Hankins, Phi Psi, decided L. Brainerd, Fiji; K. Buhler, Yeomen, won by default from B. Whitley, ATO; J. Stinebaugh, Phi Delt, threw D. Hay, ATO, 3:20.
E. Page, Theta Chi, threw B. Tugman, SAE, 1:22; J. Raffetto, Sigma Nu, won by default from T. Marshall, Canard; H. Ehrsam, ATO, threw E. Blumenthal, SAM, 1:57; P. Logan, ATO, threw T. Rieder, Fiji, 0:56; J. Giesy, SAE, won by default from R. Stinson, Sigma Chi; J. Stearns, Gamma, decision P. Phipps, Phi Delt; J.

he faked to the left and to the right, maneuvering his two opponents out of position. He went into what divers call a jackknife while still in the air, and bent his knees up to his head. Don't forget, the guy hadn't come down yet but was in the middle of his broad jump. Then just before alighting after his healthy broad jump from the foul line, Jack flipped that ball into the basket with a two-handed underhanded shot . . . Anet's Rubenstein is one of the northwest's most colorful basketball teams right now and possibly the best dressed . . . the varsity won't be seen again in Eugene after tonight's send-off game until January 4.

GOING HOME?

SEND THAT LUGGAGE

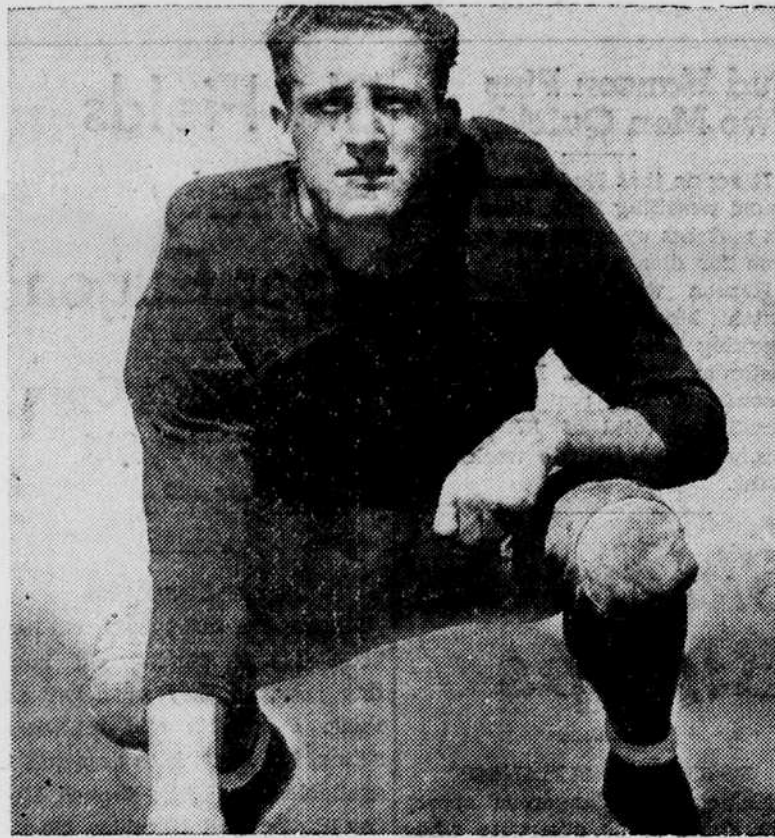
by FAST RAILWAY EXPRESS!

Just phone the Railway Express agent when your trunk or bags are packed and off they will speed, direct to your home, in all cities and principal towns. You can send "collect" too, same as your laundry goes. Use this complete, low-cost service both coming and going, and enjoy your train trip full of the proper Holiday spirit.



RAILWAY EXPRESS SERVICE

Just a Couple of All-Stars



Senior Webfoots are the above . . . Vic Reginato, veteran wingman (above) was placed on Washington's all-opponent team. Jay Graybeal, (left) half, rated several all-opponent clubs and the United Press all-coast team.

Chi, threw J. Schaefer, Fiji, 0:54; Dowell, end, Washington; Phil Gaspar, tackle, USC; Ben Sohn, guard, USC; Earl Younce, guard, OSC; Morrie Kohler, halfback, OSC; Kenny Washington, halfback, UCLA; Spook Canadeo, halfback, Gonzaga; Ray Schlosser, center, Gonzaga.

Heavyweight division—C. Kilburn, Sigma Chi, threw Bob Davis, SAE, 1:16; J. Hatch, Yeomen, threw D. Boone, SAE, 1:37 of the overtime period. T. Corbett, Kappa Sig, threw N. Kemp, Yeomen, 3:18; K. Shipley, Phi Delt, threw G. Killmer, Sigma Chi, 2:16. R. Seagle, SAE, threw D. Grabenhorst, Phi Delt, 2:26; J. Fischer, Beta, threw L. Surlis, Sigma Chi, 1:42.
R. Davis, Phi Delt, threw H. Hammer, Phi Psi, 2:18; B. Seikert, Beta, threw H. Williams, Sigma Chi, 1:18. P. Johnson, Phi Delt, threw C. Mathe, Sigma Chi, 1:00; B. Reese, SAE, threw R. Autsen, Kappa Sig, 1:52.

Drew Byes
The following heavyweights drew byes in the first round of their division: A. Silvermail, Chi Psi, W. Rapson, Kappa Sig, T. Terry, Phi Delt, P. Lingle, Sigma Nu, R. Applegate, Sigma Chi, M. Darlotis, Theta Chi, M. Hunter, Beta, R. Withers, ATO, J. Meldrum, Phi Psi, W. Parsons, Sigma Chi, G. Schweiger, Phi Delt, B. McCudden, SAE, A. Rear, Yeomen, G. Carroll, Ind. V. Nudelman, SAM, P. Bladine, Fiji, H. Kaschko, Alpha hall,

Campus Poll On Ski Numbers Shows Coeds Ahead Of Boys

By BERNIE ENGEL

More girl skiers than boys? In a poll of campus living organizations, estimates gave the number of girl slat-wearers as 130 in 16 houses and the number of boys as 149 in 20 organizations sampled. This figures out to eight and two-thirds girls and seven and a half boys per house. McKenzie pass turned out to be the favored local skiing spot, with Timberline lodge and Lake Tahoe mentioned frequently as "nice places."

Goggles Used

The waxed boards are scheduled to appear this season in under-gabardine downhill pants and one-piece goggles as far as Oregon women are concerned. Kappa Kappa Gamma specified the goggles; downhill slacks were named by practically every house replying. Sigma Kappa remarked that last year's fancy gaiters were extinct, out of use and out-moded this season.

Sigma Alpha Epsilon nominated Jim "All-Star" Marnie as a likely candidate for the varsity team, as Jim comes from the South seas and so is used to skimming over the water. Phi Sigma Kappa with

Ski Care

(Continued from page three)

member colors are a lot brighter on the snow, so be careful.

Mitts . . . Get a pair of moisture proof mitts of canvas or gabardine that snap tight around the wrist . . . then get several pair of light wool liners and carry the extra liners with you so you can change the mwhen they get wet.

Wax . . . Get a book on waxing or talk to someone that knows and learn waxing before you walk downhill and slide up and wear yourself out when it's just as easy to learn waxing.

Now, ski technique, or how to ski . . . If you learn right the first time you can be a good skier in a few weeks or you can flounder around in the snow and never learn how to swing down the hills doing christies. Either way, you'll have lots of fun, so "Ski Heil!"

Lost

ENVELOPE LOST containing month's wages near Johnson hall. Reward, Louise Aiken, 1020 Mill-race Drive. Phone 2413-W.

Wanted

RIDE TO BELLINGHAM for holidays. Male. Phone 2673-J after 7 p.m.

Orchestra

DYLE LINN'S DANCE BAND
5 pieces
Eugene Crow Stage

Barber

THE VARSITY BARBER Shop
Stylish haircuts 35c. 11th and Alder.

Drugs, Supplies

CIGARETTES

Camels, Luckies
Chesterfields
Raleighs
Pack 12c
Carton \$1.15

EVERYBODY'S DRUG
986 Willamette

Hoopmen Tied In Dorm Play

Fourth Games See Gamma, Zeta and Alpha Teams Win

Interdorm League

Team	W	L	Pct.
Gamma	3	1	.750
Zeta	3	1	.750
Alpha	3	1	.750
Omega	2	2	.500
Sherry Ross	1	3	.250
Sigma	0	4	.000

Gamma, Zeta, and Alpha halls remained at the top of the interdorm basketball league play yesterday by defeating Sigma, Omega, and Sherry Ross in the fourth.

(Please turn to page five)



GOTHAM GOLD STRIPE
Beautiful Silk Stockings

Sheer loveliness for her Christmas. These crystal clear 3-thread chiffons will make any woman happy—the more, the happier; she'll like their flawless texture, their smooth perfection of fit . . . and she'll know that they are quality stockings, because they have the famous Gold Stripe runstop in the top.

We suggest "Melody"—a flattering rose-beige shade

PRICED AT \$1.00 A PAIR

BURCH'S
FINE FOOTWEAR
1032 WILLAMETTE ST.

Run a Slalom Into His Heart

We Suggest Ski Clothes for—Ski Lauffers and Ski Lov-ers.

Right up to the minute in every detail of style as shown by the leading designers of ski garments.



See the fashion display of ski clothes on living models at the Hellig Theater tonight. Many of our garments will be shown.

We suggest ski garments for Xmas gifts. Ski suits of warm water repellent, wools, snug around ankles and wrists. Suits of fine twill "Byrd" cloth, light—but wind proof and water repellent.

\$10.75, \$14.50 to \$19.50

- Slip on Twill Coats, elastic wrist cuffs, wind and water proof. \$3.50
- Ski Pants made of fine twill, Byrd cloth, wind and water repellent. \$5.95 - \$8.95
- Ski Pants of warm woolen with Aridex process to keep you dry and warm. \$2.95
- Jackets warm woolen meltan cloths, plain colors and plaids. \$3.95 to \$5.95
- Ski Sox warm wool, red, green, and blue. \$1.49 a pair
- Ski Mittens, colorful—warm. 69c to \$1.00
- Ski Hoods. 49c to 98c
- Parka's—the best ones ever at \$1.00



Christmas Cheer

MAKE this a really old fashioned Christmas—Make the frosty air tingle with the element of surprise—Wrap your things-to-give more festively than you've ever attempted to before! Scatter cheer wherever you go, visiting your friends, writing gay greetings, calling out across the street, and saying over the telephone—"Merry Christmas! An old fashioned Merry Christmas to you all!"

New Service Laundry

839 High Phone 825

For that first winter outing . . .

protect your delicate skin with one of our many flattering protectors



Colonial Dame's Beautifier . . . 65c, \$1.00, \$2.00

Dorothy Gray's Blustery Weather Lotion . . . \$1.00

Cara Nome Finishing Cream . . . \$1.00

Factor's Pan Cake Make up . . . \$1.50

Ayer's Beautifying Face Cream . . . \$1.00

Tiffany-Davis

8th and Willamette

The BROADWAY

30 E. Broadway