

DUCK TRACKS

By GEORGE PASERO
Co-Sports Editor
Oregon Daily Emerald

Now that football is on the wane, the time has come to think of other things—of basketball and Hobby Hobson and those boys he's helping along.

Yes sir, less than two weeks remain before Webfoot hoop fans trot out for a preview of the 1940 hoop Oregon—the successors of those great '39 national champions.

There's been plenty of speculation all fall about the team Coach Hobson would present to the public, and there's been plenty of tear-jerking at the thought of such boys as Slim Wintermute, Lauren (Lad) Gale, Bobby Anet, Bob Hardy, Ford Mullen, and Wally Johansen on the sidelines.

But right now, my advice (take it for what you will), is to lay aside those towels, go out and see all the boys Coach Hobson is drilling, and then give the Webfoot mentor a helping hand. He'll give you a team, you can bet on that, and it will be a pretty good ball club, too.

Prexy Dick Is Back

True, it is hard, if not well nigh impossible, to replace those great champions, but doggone it, Hobby's got some fair boys out there, some good-looking transfers, and some good cagers from last year's club.

For instance, there's John Dick, the all-west forward. The big boy from The Dalles, who can flip baskets about as easy as he can flip words around the speaker's platform, will definitely be the tall timber nucleus of the club.

Then there's flashy, husky Matt Pavalunas, a boy with the actions of an all-American, Earl Sandness, Toivo Pippo, Porky Andrews, Arch Marshik, the mechanical-man Ted Sarpola, and Tini Smith from last year's club.

Tough Job Ahead

And too, a number of promising, though a bit green, transfers who should help when Hobby Hobson has acquainted them with the fast-break system.

Vic Townsend and Herb Tompkins, all-conference boys from Compton; Hank Anderson, 6-foot, 7-inch center from Eastern Oregon normal; Ed McGrath, all-conference from San Mateo; Bill Borch, Sacramento jayssee transfer; and Arba Ager, SONS athlete; are the boys that may break into squad positions . . . yes, and others, too.

It will be no picnic for Coach Hobson, however. Building a club from this material is a task that would make any coach worry. All the transfers need work and plenty of it before they can fit into the Hobson system, and as for the varsity men of last year, only Dick, Sarpola, and Pavalunas have had experience to speak of.

They'll Play Ball

Nevertheless, we think Coach Hobson will have a club that will fight and win its share of ball games. It may not win any championships, but it will give a good account of itself.

As for the genial Oregon mentor, too much can't be said about him. Last year he established himself as the best coach in the nation . . . after all his team was the national title-holder.

Coach Hobson, as he opens his fifth season as head basketball coach at Oregon, has an all-time record of 232 victories against only 70 defeats, a percentage of .768. His four years at Oregon show 92 victories and 33 defeats.

Hobson entered the coaching profession in 1926 after a brilliant athletic career at Oregon. He was captain and all-star choice of both the 1925 and 1926 basketball and baseball teams.

Makes Basketball Pay

He came to Oregon five years ago, and immediately began to lift Oregon basketball. In 1937, his club tied for the northwest title with Washington State and Washington, and in 1938, those Webfoots copped the northern division gonfalon, but lost the coast series to Stanford. Last year, Pavalunas, and the rest of that crew climaxed a great season by winning the northwest, coast, western regional, and national championships.

What's more, according to Cornell, basketball is on a business basis now, and making money. Three years ago basketball made \$800, two years ago because of the Stanford play-offs, the hoop game netted \$3,500, and last year, the net was \$3,600 (this time because of the Cal play-offs). Much of the credit for this, too, should go to Coach Hobson.

So, it's only fair to Skipper Hobson that he should know that

Oliver's Boys Return To Scrimmage Following Drill on Fundamentals

By RAY FOSTER

Fundamental football didn't last very long around Hayward field, for no sooner did the boys get started on the basic blocking and tackling than up comes real scrimmage again yesterday afternoon and last night.

It was an honest to goodness scrimmage too, for the players were hitting like they should have last Saturday. That is, some of the time. Twice Johnny "Buck" Berry went through the entire first string backfield and third string line for touchdowns.

On one particular play, Steve Anderson, who was playing with the second team, rifled an arrow-like pass to Hymie Harris, who caught the ball on the dead run and ran till he was nearly tackled, only to lateral the ball to a teammate. The teammate wasn't there, but Berry was and picked up the ball to scamper the rest of the way to the goal line.

Goal Line

The next time Johnny ran was when he first started through his right tackle, only to cut back across the left side of the line and go right down the field through the entire team. The run was good for 65 yards in all.

Last night the 12 freshmen gridiron men that were chosen by Oliver to finish the season working

with the varsity didn't get a chance to take part in the actual scrimmage, but Tex promised them that he would give them a chance to show their stuff in today's session.

Anderson Backfield

Working together in the Anderson backfield were Marsh Stenstrom at full, Berry and Steve at halves, and Duane Anderson, a sophomore who has been reserved by the coaching staff for next year, at quarter. The line in front of them was the regulars.

On the other side was the third-string line and the regular backfield, including Chet Haliski, Bob Smith, Jay Graybeal, and Frank Emmmons. On the line was the third team.

Dew Makes Hard Going

The lights came on at 5:10 p.m. for a while, and the players soon found that the evening dew made it hard to stay on their feet. The next game is with the Huskies next Thursday.

The team will probably leave on the Wednesday noon train for Portland and then Seattle. For a time, a rumor spread that the squad would fly, but when Anse Cornell, graduate manager, found out the price, the airplane was out.

Ping Pong Play Nears Finals As 8 Survive

All-Campus Sports In Last Rounds of Season's Activity

All-campus tournaments came a step nearer to completion this week as play in all sports advanced toward the final round.

Several close battles were waged in the ping-pong singles tournament which saw the semifinalists emerge victorious. The scores are as follows:

Copenhaver beat Hufford by default; Davis defeated Cutler, 21-10, 21-16; Hatch won from Hawkins, 14-21, 21-13, 21-19, 21-19; Bob Stafford beat Jasper 21-10, 21-12, 21-18; Rudolph beat Anderson, 21-18, 13-21, 21-19; Dunn won from Sanderson 21-19, 21-16; Sherman defeated Hill, 21-14, 21-16; and Baker beat Mullin 21-16, 21-17, 21-13.

In the semifinals: Copenhaver vs. Davis, Stafford vs. Rudolph, Dunn vs. Sherman, Hatch vs. Baker.

Ping Pong Scores

Bob Rudolph and Al Shaw eked out a close win over the team of Anderson and Patton in the semifinals of the ping-pong doubles tournament. Rudolph and Shaw got off to a slow start and dropped the first two games, but came on fast to take the last three matches handily. The score was 22-24, 19-21, 21-9, 21-19, 21-13.

Frank Baker and Steve Foucek will be the other finalists in the ping-pong doubles tournament as a result of their hairbreadth decision over the team of Martin Coffey and Pat Riley. The teams took turns winning the first four games but Baker and Foucek steadied themselves to pull the final game out of the fire. The score: 19-21, 21-17, 18-21, 21-19, 21-19.

Oregon fans are behind him 100 per cent as he enters a "tough stretch of water."

Short Shots . . . Two boys that really looked good Saturday for Oregon were Jim Harris and Dick Horne, the Compton boys who play opposite ends . . . both should be in there plenty next year . . . Curly Al Linn, pitcher of last year's baseball champions, is back on the campus preparing to go to school winter term . . . Al worked at the Frisco fair until it closed late this fall.

Joe Gordon of Yankee fame was in the press box for a few minutes at Saturday's game . . . Jack Wilson, Portland boy who is a Red Sox pitching ace, was down for the game . . . two frosh baseball players overlooked in Friday's story are Bill Hamel, third baseman, and Chuck Clifford, first baseman, who starred for Edward's Furniture powerful club last summer . . . both are slug-gers.

Bobby Anet, who claims he is no woman's man, and Wally Johansen said the Homecoming crowd was the biggest they had seen here in five years . . . For tough frosh we nominate Duke Iverson and Dick Ashcom . . . they can certainly handle those dukes.

Orides Hand DGs First Loss

Orides handed the powerful Delta Gamma team its first defeat of the season by an uneven total of 41 to 13 in the next to the last day of volleyball games this season at Gerlinger.

In downing DG, Orides has assured themselves of its division title. The independent team remains unchanged along with the Kappas, Susan I and Alpha Phi combinations.

Susan took Alpha Chi O to the cleaners 51 to 9 to keep its team among the leaders. Hendricks hall's top ranking team overcame Alpha Xi Delta 30 to 21.

Today's outstanding battles will see Alpha Phi take on the apparently indomitable Orides, and AOPi runs up against the defending champs, Kappas. The other tiffs are: Gamma Phi vs. Hendricks and AOPi vs. Pi Phi.

Phi Psis, Lodge To Vie Sunday

Phi Kappa Psi will throw a fast, but heavy team against a light and fast Chi Psi crew when the two teams meet this Sunday in their annual football encounter. Both teams will boast experience, weight, and speed. The battle, usually a homecoming affair, was postponed this year because of inability to get equipment.

Phi Psi's board of strategy is planning a mixed attack, while the Chi Psi brains admit that their hopes for victory will be based on a running attack.

Ted McMurren, three year letterman from West Linn high school, will spearhead the Phi Psi offensive in a triple-threat capacity. McMurren is expected to make his presence felt by some fancy running, passing, and kicking. He can also do his share of blocking.

Phi Psis Are Heavy

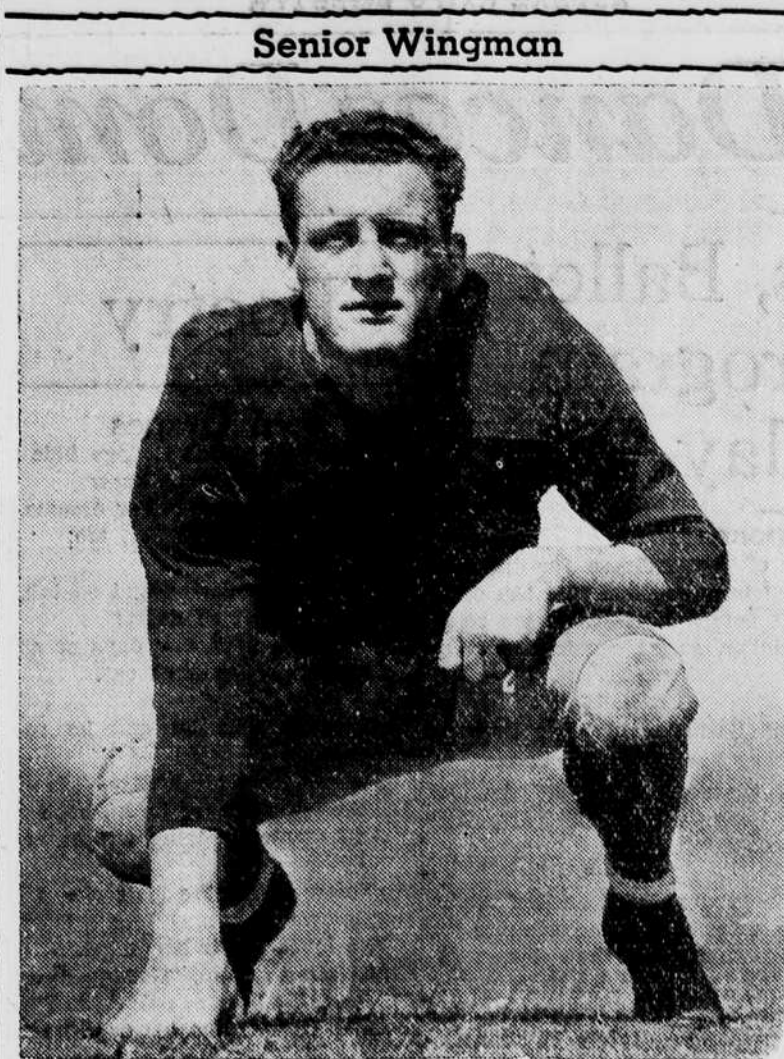
In weight, the Phi Psis will hold a slight edge. The Phi Psi line will average 183 pounds. The tackle to tackle average will be 188. The Chi Psi line will amble into battle averaging 170 pounds with a tackle to tackle average of 185 pounds. Their fast backfield averages 155 pounds while the Phi Psi backfield lines up at 154.

Phi Psi Lineups

Possible lineups for the Phi Psi: Russ Rohwer, left end; Ed Jamieson, left tackle; Marsh Hoffman, left guard; Frank Meldrum, center; Larry Langstrom, right guard; Harry Stirwalt, right tackle; Herb Hamer, right end.

Fred Carlson, quarter; Lloyd Dod, left half; Cam Collier, right half; Ted McMurren, full.

Word that the Chi Psi lodge comes from Larry Courtwright, left end; Al Silvernail, left tackle; Tommy Starbuck, left guard, Bud



Vic Reginato, best all-around Duck end, plays his last game under Oregon colors one week from today against Washington in Seattle.

'Espa' Snyder Fills WAA Sports Head

Versatility Key to Energetic Lass' Wide Success

By MARGARET YOUNG
WAA head of sports, officials' manager, basketball manager, physical education majors' club president, and hockey manager—Mildred Snyder has answered to each of these.

The governing body of WAA unanimously felt that Mildred had the best qualifications for this responsible sports position. So they suspended the constitution in order that she could continue in her position. This little brunette livewire has changed her major to psychology.

More Balanced Course

"That way I can get a more balanced course as background to my study of physiotherapy," Mildred explained. "Too much time was being spent on teaching techniques, whereas I will need the technical and background courses in my work with heat and hydro treatments."

Mildred is not "all business." Not being able to locate her busying around Gerlinger or Condon, I gave up and decided to relax, and there she was relaxing herself with a coke in one hand. The clever hairdo her roomie had designed for her was new to me—and bewitching.

As a member of the University co-op, where she is treasurer and member of the interhouse council, Mildred has helped bring home two intramural basketball championships in the last two years. In 1939 she was an all-star guard.

Attended Aquatic School

Last summer she attended the national aquatic school and then taught swimming, first aid, and life-saving as part of the Red Cross program sponsored by Lane county.

"This head of sports job is interesting," said Espa. Oh, oh! I let it slip. Somehow she is opposed to the common usage of this fitting nickname. If all started, you see, when the physical education seniors three years ago adopted green little Mildred as their senior project. This title, S. P., evolved until it sounded like Espa.

Aronson, center; Al Bertz, right guard; John Buserud, right tackle; and Bud Fenton, right end, will probably round out their line.

The Chi Psi backfield will probably see Lloyd Sullivan at quarter, Leonard Hicks at left half, Del Utter at right half, and Ernie Williams at full.

UO-UW EXCHANGE TICKETS AVAILABLE

Students wishing to see the Washington-Oregon football game in Seattle Thanksgiving may get their student exchange tickets at McArthur court this week and up to Wednesday of next week.

Reduced price of the tickets are \$1.10 to ASUO ticket holders, Anse Cornell, graduate manager, said yesterday. Seats are on the 40-yard line in the first five rows from the bottom.

Senior Wingman

TODAY'S DONUT FOOTBALL
Today's touch football games, both at 4 o'clock, are as follows:
Field 1—Sigma Phi Epsilon vs. Sigma Chi.
Field 2—Omega hall vs. Delta Upsilon.

Phi Sigs Win Over Sammy Donut Squad

Sherry Ross Nine Takes Thumping From Phi Psi Team

By BERNIE ENGEL

Phi Sigma Kappa yesterday bounced Sigma Alpha Mu 6 to 0 to capture the league V touch football championship. Meanwhile, Phi Kappa Psi was running Sherry Ross hall ragged, coming out with a 12 to 0 win after controlling the game throughout.

The Phi Sigs started driving quickly, going to the Sammy 25 on two laterals after the kick-off. They were checked here by an interception and fell back to mid-field. Ken Willis then caught a Sammy heave and ran it down to the 30, where a 15-yard penalty for hitting low nullified the march.

Fetsch-Wellis Cliches

Although making several more drives, it was not until the middle of the last half that an advance clicked. Fullback Carter Fetsch standing on the Sammy 10 tossed to Wells for the score.

"Coffee nerves" probably cost the Phi Sigs another score. In the last minute of play, camped on the Sammys 10, the victors dropped three consecutive passes in the end zone.

Phi Kappa Psi scored both her touchdowns in the first half. Ted MacMurren passed both touchdown heaves, with Russ Rohwer and Jack Leighton on the receiving ends.

One minute after the second score, Sherry Ross managed to bat down another goal-bound pass, this one having reached the 1-yard line.

Hall Resists

The hall outfit mustered a little better resistance in the last half to forestall any more Phi Sig scoring, although the flatmen retained the offensive.

Lineups:
Phi Sigs (6) (0) Sammys
Crocker . . . LE . . . Saltzman
Josse . . . LG . . . Nudelman
Hitchcock . . . C . . . Weinstein
Jones . . . RE . . . Ehrman
Anderson . . . RG . . . Senders
Helterline . . . Q . . . Herzog
Nichols . . . LH . . . Shimshak
Wells (6) . . . RH . . . Stein
Fetsch . . . F . . . Lakefish
Schick . . . S . . . Hoffman

Sherry Ross (0) (12) Phi Psi
Manning . . . LE . . . (6) Leighton
Sullivan . . . LG . . . Bennett
Burt . . . C . . . Meldrum
Reynolds . . . RG . . . Stirwalt
Green . . . RE . . . (6) Rohwer
McCarthy . . . Q . . . Homer
Penfield . . . LH . . . Veness
Motschenbacher RH . . . Hichens
Wood . . . F . . . MacMurren
Blair . . . S . . . Hoffman

The titanic struggle is scheduled for 11 a.m. Sunday. Pasero threatens that all charges who fail to answer the battle call will not be given any by-lines for a month.

SPECIAL Trains - BARGAIN Fares for THANKSGIVING

PORTLAND

\$250 ROUNDTRIP

Wednesday, November 22

SPECIAL TRAIN - 3:30 P. M.

Tickets also good on trains departing 12:25 P. M. and 4:45 P. M.

RETURNING

Special trains leave Portland Sunday, Nov. 26 at 3:00 P. M., and 6:30 P. M.

SPECIAL PARTIES being organized to San Francisco and Los Angeles. Inquire at Ticket Booth for details.



OREGON vs. WASHINGTON \$650 Roundtrip Seattle in coaches

Sponsored by ASSOCIATED STUDENTS, U. of O.

Three Shutouts Mar Frosh Record

OSC Rooks, Washington Babes Pile Up 58 Points Against Warren's Ducklings

By DON CAWLEY

Three games. Three defeats. Points scored—0. Points scored against—58. That is the sad record of the University of Oregon freshman football team, heralded to be one of the greatest frosh elevens in the history of the school, the yearlings had the worst season that Honest John Warren has had in his five years as frosh coach.

Injuries hamper team. Constantly hampered by injuries, the team never was at full strength. At the outset of the season, Ray Marlowe and Chuck Elliott, the two star tackle aspirants, were injured and out for the remainder of the season. Elliott was downed with acute appendicitis and Marlowe with a dislocated shoulder. These two injuries alone ruined what looked like an impregnable line.

The backfield was also constantly makeshift. Jim Shepard, the regular left half, and Roy Ell, the pile-driving fullback, were out for the greater part of the year. Except for the opening whistle of the first frosh game the backfield was never intact.

Combination Failed

Warren was forced to use too many makeshift lineups and none of the combinations could seem to click. It seemed that the team lacked an inspirational leader or a . . . (Please turn to page four)

THE

University Theater presents

GEORGE BERNARD SHAW'S

"Arms and The Man"

"Shaw's brilliant satirical comedy of war"

THURSDAY, FRIDAY and SATURDAY
November 16, 17, and 18

in
JOHNSON HALL
(Curtain—8 p.m.)

Admission (all seats reserved) 50c

Reservations at box office in Johnson hall
(Hours: 10-12 a.m., 1-8 p.m.)

CLASSIFIED ADVERTISING RATES

First day 2c per word
Subsequent days 1c per word
Three consecutive times 4c per word and a fourth time FREE with cash payment.
Minimum ad ten words.
Ads will be taken over the telephone on a charge basis if the advertiser is a subscriber to the phone.
Mailed advertisements must have sufficient remittance enclosed to cover definite number of insertions.
Ads must be in Emerald business office not later than 6:00 p.m. prior to the day of insertion.
Arrangements for monthly rates will be made upon application.

CLASSIFIED ADS.

Phone 3300 Local 354

Lost

LADIES' HAMPTON watch. Initials J.C.T. Saturday down town or Homecoming dance. Reward. Call 204.

TWO WOODEN MANNEKINS taken from Theta Homecoming sign, Friday night. Phone 2340. Reward. No questions asked.

THURSDAY. Dark overcoat, Rm. 101 Oregon. Donnell McKalson. Ph. 1168-M. Reward.

SMALL BROWN conductor's coin purse containing \$10, between Gamma Phi and Siberian. Reward. Call 772.

Orchestra

DYLE LINN'S DANCE BAND
5 pieces
Eugene Crow Stage

ELTON DALE'S ORCHESTRA.
Phone 2248-J—239.

Used Tires

FENN'S USED TIRE SHOP. Odd sizes a specialty. Phone 2096-W. 674 Olive.

Flowers

KIRKLAND FLOWER CO. Cor-sages a specialty. Pick up your flowers on the way to the park. Springfield Junction. Free Delivery. Ph. Spr. 4.

Barber

THE VARSITY BARBER SHOP. Stylish haircuts 35c. 11th and Alder.

Shoe Shine

IF you know what a good shine is . . . Come to Campus Shoe Shine.

Restaurant

MAYFLOWER LUNCH. Special Jumbo Hamburgers. Home made pies and candy.

Found

1 top coat
1 green slicker
1 gray hat
1 Wondersheen crochet set
1 girls' wool jacket
1 pr. girls' saddles
3 pr. girls' gloves
12 umbrellas
6 scarfs
1 set of girls underclothes

Books—
Designs for Writing
Outline of European History
Accounting Fundamentals
Problems in Prose
Introductory College Math
Development of Modern Education
2 notebooks
6 black fountain pens

MAN'S HAMILTON wrist watch. Call University depot.

Films Developed

FILMS DEVELOPED FREE
Prints 3c each
Enlargement Free
with each roll
986 Willamette developed
EVERYBODY'S DRUG

Special rate on the Emerald, \$2.25 for the balance of the year. Subscribe for the folks at home, for first hand campus news.