

DUCK TRACKS

By ELBERT HAWKINS

Huskies Suffer Initial Loss in 14 Encounters

Laddie Gale and Pat Dorsey Set Scoring Pace

Northern Division Standing

W	L	Pct.	PF	PA
Oregon	8	1	888	400 324
Washington	4	1	800	198 159
WSC	4	4	500	279 291
Idaho	1	5	167	176 220
OSC	0	6	000	150 209

Last Night's Result
Oregon 57, Washington 49.

Tonight's Game
Oregon and Washington.

Hot In Second Half

Hobby's basketballers weren't especially hot in the first half but showed unmistakable wizardry in their late drive. At the five-minute mark, Washington hit an "off" streak with Oregon leading only 39 to 36, and six minutes later they trailed the surprising Oregon, 46 to 36.

Three minutes from the end, Oregon's lead was the same, 57 to 47, and the game slowed down with Hobby Hobson's team bidding its time.

Laddie Gale paced Oregon's point-gathering, with 16 points on seven field goals and John Dick and Slim Wintermute were close behind with 14 apiece. For the Washingtons, Guard Pat Dorsey had 15 tallies and his mates, Bill McDonald and Roy Williamson, had 10 and 11, respectively.

Summary:

Washington (49)	FG	FT	PF	TP
Williamson, f	5	1	4	11
Lockhart, f	2	0	3	4
McDonald, c	4	2	3	10
Dorsey, g	6	3	4	15
Ziegenfuss, g	4	0	1	8
Dorr, f	0	0	1	0
J. Voelker, f	0	0	1	0
Schlichting, c	0	0	2	0
Peters, c	0	1	0	1
Dobson, g	0	0	0	0
Izzard, g	0	0	0	0

Oregon (57)	FG	FT	PF	TP
Gale, f	7	2	1	16
Dick, f	5	4	4	14
Wintermute, c	6	2	3	14
Anet, g	2	1	2	5
Johansen, g	2	4	2	8
Sarpola, f	0	0	1	0
Hardy, c	0	0	1	0
Pavalunas, g	0	0	0	0

Totals	21	7	19	49
Half-time score: Washington 27, Oregon 24.				

Missed free throws: Washington—Williamson 3, Lockhart 1, J. Voelker 1, Schlichting 1, Peters 1, Ziegenfuss 1, Izzard 1. Total 9.

Oregon—Gale 1, Dick 1, Wintermute 2, Anet 3, Johansen 3. Total 10.

Field shots taken—Washington 76, Oregon 77.

Officials: Emil Piluso, referee; Frank Heniges, umpire.

Klamath Five Routs Duckling Hoopmen, 41-35

Caven Leads Frosh With 14 Points; Tilt Is Third Defeat

By EHLE REBER

The Lost River dairy basketball team from Klamath Falls took the frosh into camp yesterday afternoon 41 to 35 and dealt them their third straight loss of the season at McArthur court.

The Lost River dairy, an affiliate of the Medo Land creamery of Eugene, has a record of nine wins and no losses for the season and leads the Klamath city league.

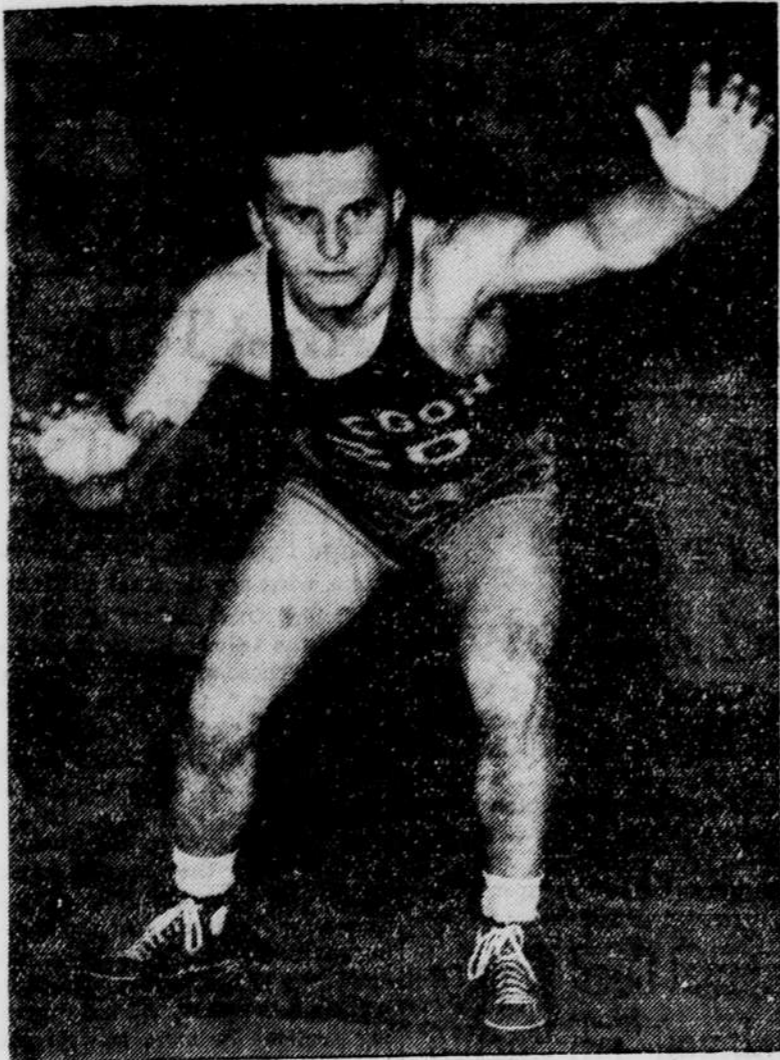
John Warren's Ducklings led, 22 to 19, at half time, but the dairy crew slowly passed them up and held the lead throughout the remaining 12 minutes of the game.

Frosh Falter
At one time in the second half, Warren's outfit commanded a 25 to 20 lead, but Ed Wakeman and Howard Scroggins, Klamath veterans, opened up on long shots to take the lead from the faltering freshmen.

Doug Caven, steady forward, was high point man of the contest, sinking 14 points.

Overall in lineup
Bob Deverall, getting his first real taste of regular competition, played a good game at guard, and may break into the regular starting lineup before the next rook.

Driving Cog



Bobby Anet... Oregon's consistent hard-driving guard. He helped in last night's 57 to 49 galloping win over Washington.

Theta Chi, ATOs, Phi Deltas Zeta Hall, Sammies, SAEs Win in 'A' League Play

By DOUG PARKER

Alpha Tau Omega trampled the Yeomen in an "A" league game Tuesday by a score of 34 to 9. The massacre was decided in the first half when the ATOs took an 18-2 lead. Jack Dunn and Wayne Scott accounted for 14 points for the Hotelmen in the first half.

Scott, former Southern Oregon normal player and one-time member of Hobby Hobson's basketball squad, had a field day at the expense of the Yeomen, gathering 14 points in a little over three quarters. Dunn made eight points, all in the first half, to take runnerup spot. Jay Graybeal, guard, accounted for six.

Lineups:
ATO's (34) (9) Yeomen
Dunn (8), F... (2) Murray
Rousseau, F... (2) Libke
Stafford (4), C... Campbell
Wyman, G... (2) McChesney
Scott (14), G... McKinney
Graybeal (6), S... Henry
Karstens (2), S... Turner

Holt... S... Williams
Referees: Don Tower and Phil Craft.

Phi Deltas 19, Sigma Hall 6
The Brobdignagians and the Lilliputians stepped out of Gulliver's Travels to play basketball in an "A" league game when the Phi Deltas conquered Sigma Hall. The Phi Deltas had more than an 8-inch average in height over the diminutive Sigma-ites and garnered an easy 18 to 6 win.

Harold Morgan of the Phi Deltas and Wilbur "Bitsy" Grant of the dorm outfit led the scorers with six points each. Grant was the only one to score for Sigma Hall. Bill Feasley followed closely with five points.

Morgan made the first two buckets for the Phi Deltas and by half-time the Barnmen led, 7 to 2.

Lineups:
Phi Deltas (19) (6) Sigma Hall
Morgan (6), F... (6) Grant
Shipley (4), F... Ray
Dickson, C... Green
Stevenson, G... Richardson
Holmes (4), G... Browning
Feasley (5), S... Parker
Philippi, S...

Referees: Roald Grunseth and Al Long.

SAEs 17, Fijis 8
For one whole quarter, the Fijis and the SAEs played scoreless ball, but after Claude Hockley potted a lay-in late in the second quarter the SAEs got started and walked off with a 17 to 8 victory.

Ed O'Reilly of the SAEs made nine points to lead his team to victory. Hockley made five counters for the winners.

Both teams lagged during the first half. O'Reilly and Hockley were the only ones to score in that period. They potted a fielder each. Twelve points were scored by the two teams in but three minutes of play at the first of the fourth quarter.

By JACK LEE

A fast moving Theta Chi "A" quintet, with "Whizzer" White leading the attack, romped over a weak Omega hall team yesterday, 33 to 8.

Zeta hall's hoopmen proved to be about the best dorm quintet in donut play when they outscored the Sig Eps in a fast "A" game, 22 to 14.

Sigma Alpha Mu came back strong in the last quarter to nose out a hard-fighting Sigma Nu club, 17 to 13 in an "A" league contest.

Whizzer White and company did it again. A strong Theta Chi team won their third straight victory over Omega hall 38 to 8. The outcome was never in doubt as Theta Chi romped ahead at the start.

Willie Fry and Whizzer seemingly could not miss the bucket as they accounted for 26 points between them.

Omega hall was blanked during the first half which ended 6 to 0.

Lineups:
Theta Chi (38) (8) Omega Hall
Dartiotis (2), F... Shimomura
White (15), F... (2) Robb
Phillips (6), C... (4) Seifert
Fry (11), G... Green
Loback (4), G... (2) Olmstead
Anderson, S... Dunkel
Auld, S... Inahara

Referees: Phil Craft and Don Tower.

Zeta Hall 22, Sig Eps 14
Two colored boys, Willie Torrence and Shelby Golden, proved to be the spark of Zeta's win over the Sig Eps. These two lads played very clever floor games and ran up 10 points.

Zeta had a lot of difficulty in hitting the bucket in the first period being on the short end of a 6 to 0 score at the close of the first quarter. However, Gordon Landeen and Golden began to find their range in the last three periods and the Zetas built up a lead which was never threatened.

Louie Bean proved to be the leading Sig Epi player, accounting for four points.

Calling 'Em Quick

By GEORGE PASERO Assistant Sports Editor

"The best horse won." That statement, made by a marvelling and weary hoop fan (some of the fans were nearly as worn out as the players) as he left McArthur court last night should be one of the classic quips of the year.

For last night, Oregon's galloping hoopsters and Washington's drive, drive Huskies turned on the court, and broke old McArthur's court's hazy expanse into a roaring madhouse.

Not since a year ago when these same teams met on the McArthur court have Eugene fans seen such basketball. They drove, those Ducks and Huskies, in a wild stampede to the finish that would have been a credit to the mightiest galloping of Seabiscuit and War Admiral. And they shot with uncanny wizardry.

But last night, just as last year, Oregon had the final kick that was necessary, a final kick that brought them from behind to a well-earned victory.

Yes, until dethroned, Oregon's champions are still "kings of the gallop."

For the best summing up statement the honors go to Washington's Hec Edmundson: "Well sir," said Hec, "that was a darn good ball game, a darn good club won, and a good one got beat."

The smiling Edmundson, "Black Fox" as they call him, laughed as he said it, and his laugh boded no good for Oregon tonight.

"Those who like action got plenty of it tonight," said Coach Hobson of the Ducks in adding his bit to the after-game locker room shots.

"The kids turned in a good second half. Some kind of a record must have been approached in the opening minutes of it. Washington was handicapped by the loss of Dick Voelker, but I think we were a little better ball club."

Washington's Huskies were a

(Please turn to page three)

Duck Ringmen Face Winged 'M' Foe at Portland

Heavyweight Tilt To Headline Long Card Tonight

Oregon's knights of the ring will polish off a two-match series with Multnomah club's battlers tonight in the Portland team's lair.

In the previous match in Eugene, the Winged "M" aggregation took three out of five mitt encounters. Oregon's wrestlers lost a close 17-14 decision at the Portland club's hands on the other half of the twin bill.

The feature encounter of the evening will be a terrific battle of the heavyweight glove-tossers. Jim Bailey, Oregon's own heavy, will trade punches with Patrick O'Callaghan, Multnomah club find. O'Callaghan gained a slight edge in the previous six-minute go.

Full Program
A total of 11 wrestling bouts are slated. Six boxing matches are also scheduled.

Match time will be 7:45 p.m.

Wrestling lineups:

118 pounds — Wendell Haley, Oregon, vs. Melvin Williams, Multnomah.

132 pounds — Bill Luderback, Oregon, vs. Jim DeShazor, Multnomah.

138 pounds — Ronnie Long, Oregon, vs. Ed Pape, Multnomah.

140 pounds — Jim Mountain, Oregon, vs. Randy Struble, Multnomah.

145 pounds — Burt Duke, Oregon, vs. Glenn Peterson, Multnomah.

155 pounds — Jack Moriarty, Oregon, vs. Harold Williams, Multnomah.

155 pounds — Earl Jeans, Oregon,

Long Whiskers No Handicap to Mermen

By JIMMIE LEONARD

Long whiskers didn't slow up Oregon's streamlined varsity tankmen. At first it was feared that whiskerino time would slow up the sophomore members of the squad, but yesterday's practice session proved the rumor false. The whiskers just don't have a chance to become waterlogged.

Jim Reed and Ned Johns, coaches, are preparing their men for Saturday's (February 4) meet with Oregon State college in Corvallis.

The Beavers had previously been scheduled to journey to Eugene for the February 4 match, but the Ducks will go north. The staters will come to Eugene Saturday, March 4.

Coaches Are Pleased
The coaching staff was well pleased with the impressive showing of the Webfoot mermen in the Dads' day exhibition last Saturday.

In which four records—300-yard medley relay, 100-yard backstroke, 100 and 200-yard breast stroke—were broken.

The Duck diving trio—Elmer Mallory, Leo Gaffney, and Ralph Cathey—received coaching from Russ Cutler, assistant professor of physical education, last night. Gaffney nosed out Cathey and Mallory for top diving honors in Saturday's exhibition.

The ineligible-crippled freshmen will travel to Corvallis Friday, February 3, to engage the Oregon State rooks. Coach Johns expects Gerald Huestis, Dick Smith, Ed Jacobs, Jim Carney, and Bob Range to carry the brunt of the Duckling charge against the baby Beavers.

Phi Deltas Win From Kap Sigs in Handball

Phi Delta Theta advanced in donut handball play Tuesday afternoon by capturing two sets from the Kappa Sigma "hardball pushers."

In the singles, Bob Smith defeated Elved Steele, 21 to 2 and 21 to 5. In the doubles, the Phi Delt duo of Jack Blanchard and Ken Shipley turned back Bob Engelman and Ralph Griffith. The Kappa Sigs gave the third set to their opponents after winners of the earlier matches had been announced. At the time Romy de Pittard and Bob McAuliffe were battling it out, 21-13 and 14-12.

Take the Emerald to McArthur court tonight and use this scoring table.

Tonight's Basketball Lineups

UNIVERSITY OF WASHINGTON							
No.	Name	Pos.	Exp.	Hgt.	Wgt.	Age	Home Town
8	Arthaud, Jack	F-G	Fr	5'11"	160	19	Seattle
20	Dobson, Dave	F-G	0	6'1"	180	20	Renton
11	*Dorr, Bob	F	1	5'8"	145	21	Ferndale
21	*Dorsey, Pat	G	2	6'	175	21	Ellensburg
3	Fleming, Bill	C	0	6'3"	185	19	Seattle
28	Izzard, Dick	F-G	0	6'4"	177	20	Seattle
17	*Lockhart, Harry	F	2	5'11 1/2"	160	21	Walla Walla
15	*McDonald, Bill	C	1	6'5"	215	20	Seattle
25	*Priess, Newell	F	1	6'4"	170	21	Spokane
5	Schlichting, Hal	F	1	6'6"	200	21	Spokane
34	Voelker, Bob	F	Fr.	6'3"	175	20	Seattle
14	*Voelker, Dick	C-F	2	6'3"	178	23	Seattle
24	Voelker, Jack	G-C	Fr	6'4"	176	24	Seattle
7	*Williamson, Roy	F	1	6'	178	22	Seattle
13	*Ziegenfuss, George	G	2	6'2"	175	21	Seattle

Player, U. of W.	FIRST HALF			SECOND HALF			Totals	Pers'n's
	No.	F.G.	F.T.	T.P.	No.	F.G.		
F Arthaud								
F Dobson								
F Dorr								
G Dorsey								
C Fleming								
F Lockhart								
F Izzard								
F Schlichting								
G Voelker								
G Ziegenfuss								
C McDonald								

Player, Oregon	FIRST HALF			SECOND HALF			Totals	Pers'n's
	No.	F.G.	F.T.	T.P.	No.	F.G.		
F Gale								
F Hardy								
C Wintermute								
G Anet								
G Johansen								
S Sarpola								
S Pavalunas								
S Dick								

UNIVERSITY OF OREGON SQUAD

No.	Name	Pos.	Exp.	Hgt.	Wgt.	Age	Home Town
20	*Anet, Robert (Bob)	G	2 yrs.	5'8"	175	20	Astoria
14	Andrews, George	G	Fr	5'11"	180	20	Victoria, B.C.
18	*Dick, John	F	1 yr.	6'4"	200	20	The Dalles
28	*Gale, Lauren (Laddie)	F	2 yrs.	6'4"	195	21	Portland
40	*Hardy, Robert (Bob)	F	1 yr.	6'3"	180	21	Ashland
32	*Johansen, Wally	G	2 yrs.	5'11"	155	21	Astoria
34	Marshik, Archie	C	Fr.	6'6"	195	20	Eugene
15	McNeely, Evert (Red)	G	Fr	6'2"	180	22	Portland
13	*Mullen, Ford	G	1 yr.	5'8"	165	21	Olympia, Wash.
11	*Pavalunas, Matt	F	1 yr.	6'	170	21	Portland
26	Sandness, Earl	F	Fr.	6'4"	190	19	Astoria
35	*Sarpola, Ted	F	1 yr.	6'2"	160	21	Astoria
22	*Wintermute, Urgel (Slim)	C	2 yrs.	6'8"	195	21	Eugene

* Denotes varsity letters earned.

RENT that TUX

Double Breasted with Studs
\$3.50
Joe Richards
873 Willamette
Phone 422

(Please turn to page three)

(Please turn to page three)

(Please turn to page three)