

Softball Race Wipe-open as Drive Nears End

Theta Chi Virtually Certain of Play-Off Berth; Comets, Alpha Tau Omega, Phi Sigma Kappa in Hot Race; Beta Theta Pi, Gamma Hall, Canard Club Fight It Out for Division Lead; Omega Heads Third Division; Phi Delta Theta, Delta Upsilon to Battle for Other Place in Play-Offs; Several Games Still Unplayed

Division I			Division II			Division III			Division IV			Division V			
W	L	Pct.	W	L	Pct.	W	L	Pct.	W	L	Pct.	W	L	Pct.	
Theta Chi	4	0	1.000	Phi Delta Theta	4	0	1.000	Omega hall	2	0	1.000	Beta Theta Pi	2	0	1.000
Zeta hall	3	1	.750	Delta Upsilon	3	0	1.000	SPE	2	1	.667	Canard club	1	0	1.000
Kappa Sigma	3	1	.750	Sigma Nu	2	2	.500	Phi Gamma Delta	1	1	.500	Gamma hall	1	0	1.000
Sigma Chi	1	3	.250	SAE	1	2	.333	Chi Psi	1	2	.333	Delta Tau Delta	0	2	.000
Pi Kappa Alpha	1	3	.250	Sigma hall	0	3	.000	Sigma Alpha Mu	0	2	.000	Phi Kappa Psi	0	2	.000
Sherry Ross	0	4	.000	Yeomen	0	3	.000					Alpha hall	0	1	.000

Hobson Undecided As to Travelers for Extended Journey

Duck Coach Declines to Name Other Men For 10-Day Trip; Bob Creighton, Hardy, John Linde Selected as Hurlers

By ELBERT HAWKINS

Oregon's varsity baseball coach, Howard Hobson, went back into the trenches yesterday afternoon and refused to proceed any farther than he did the day before in naming the squad to travel on the coming road trip.

Tuesday he came out on the firing line long enough to say that eight men had their jobs tied up tighter than the Hubbell-Fette pitching duel.

He even got enough ammunition in his trench mortar to name the eightfortunates who have their jobs tied up.

Eight Named

The eight are: Ford Mullen, catcher; Bob Creighton, Bob Hardy, and John Linde, pitchers; Gale Smith, Jack Gordon, and Wimpy Quinn, infielders, and Jimmy Nicholson, outfielder.

There, however, something gave out. Whether it was powder, shot, or Coach Hobson himself, will probably never be known. At any rate he refused to name the other members of the traveling corps, preferring to delay the zero hour a day.

The zero hour rolled around, but somewhere along the line General Hobson decided to delay the fatal announcement another day.

Hobby and Marshall

In the meantime he sent his infantry through a mock battle. Bill Marshall hooked up with Hobson in what might have been a pitcher's battle, except that Hobson was pitching against his own wrecking crew.

Wimpy Quinn, Jimmy Nicholson, Captain Ford Mullen, and Gale Smith, big guns in the Hobson heavy artillery, all looked over Hobby's "wrinkle" and solved it satisfactorily.

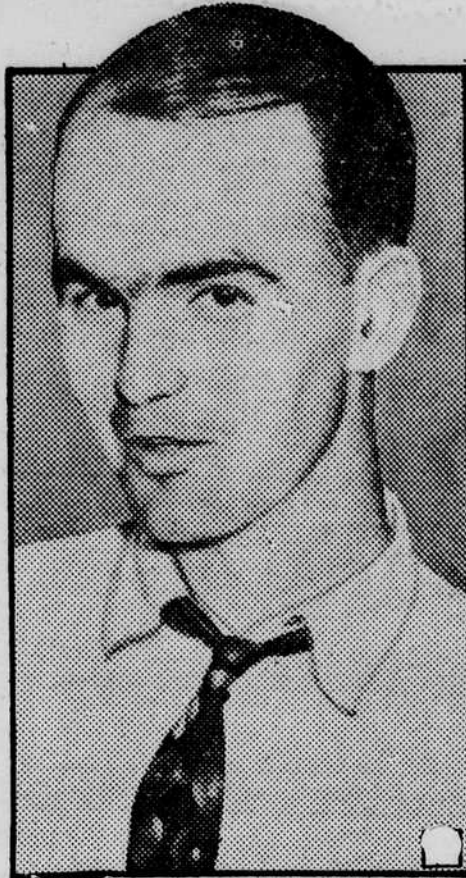
Bill Marshall had little trouble putting the horsehide past the "Hobson Rifles," who included Cece Walden, catcher; John Linde, Jack Coleman, Tom Cox, and Lloyd Beggs, infielders, and Ken Battleson, Bob Hardy, and Bob Beard, outfielders, in their lineup.

Ford Mullen, catcher, Matt Pavalunas, Quinn, Smith, and Gordon, infielders, and Tommy Cox, who played with both teams, along with Bob Creighton, and LeRoy Mattingly, outfielders, were the other group.

Shock Troops

As soon as the shock troops—Bob Smith, Jimmy Nicholson, and John Yerby—arrived, Creighton and Hardy retired behind the front lines for first aid. Tommy Cox stayed with a short-patching, and Mattingly took Hardy's spot

Southern Hope



Twenty-three-year-old Chandler Harper . . . watch him in coming golf tournaments, say pros in the south.

shack on second, Mallory at short, Smith on third, and White, McNeely, and Earl in the outfield. Rathbun will catch.

Coach Warren was in Portland yesterday, but is expected back to accompany his team to Swimmer's Delight.

Hills Creek had a fairly strong team in the state league last year, ending the season ahead in a series with the Eugene Drakes.

"We need to develop social conscience as to what effect individual business will have on human welfare." Boston university's Dr. W. F. Vaughan charts a new goal for U. S. institutions of higher learning.

Frosh Baseball Nine To Play Hills Creek

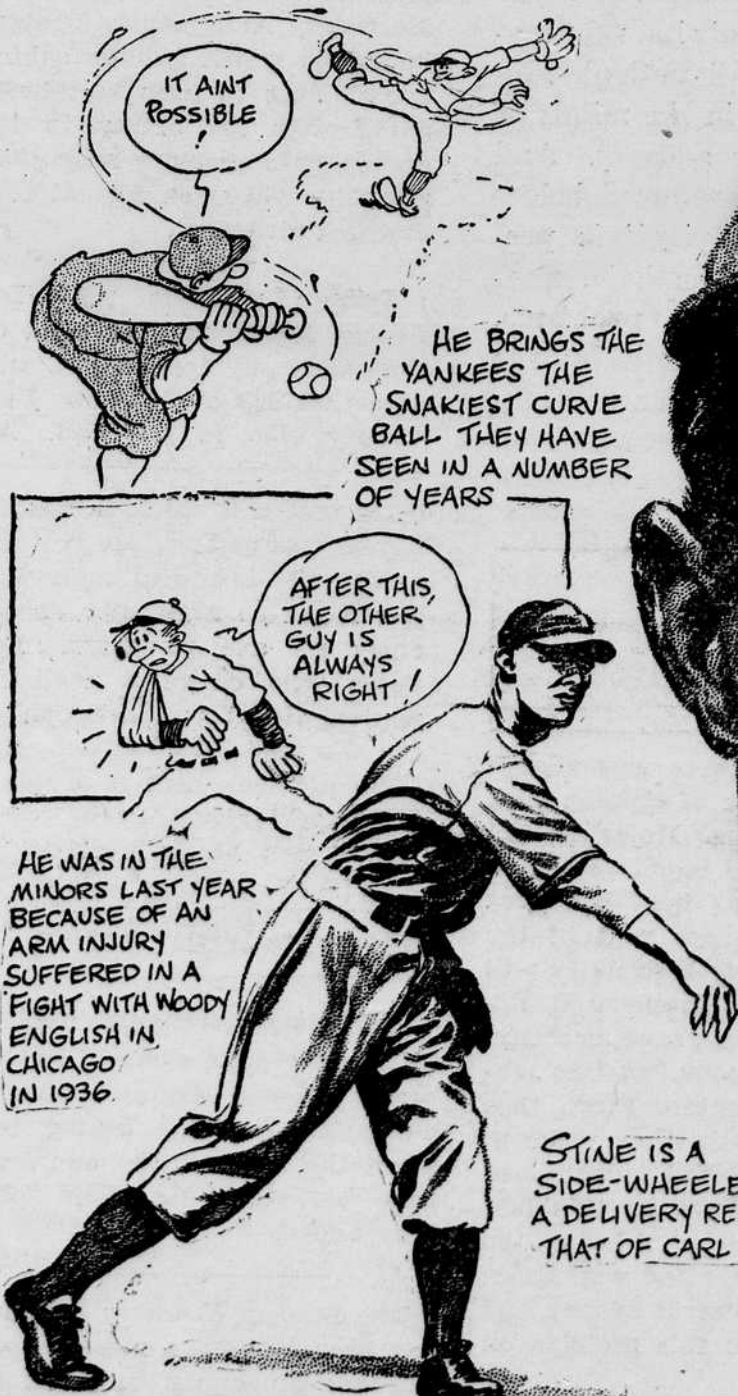
Allegretto or Rieder Hurl Against State Leaguers Today

The Duckling baseball squad led by either Moundsmen Allegretto or Rieder on the mound will travel to Swimmer's Delight today at 5:45 to meet Hills Creek, a state league team.

The usual lineup will take the field with Hamer on first, Shim-

in center field for the "Hobson Rifles."

The final score is still in doubt, but a median of the estimates by both sides brings the tally to somewhere in the neighborhood of 12 to 1.



STINE IS A SIDE-WHEELER WITH A DELIVERY RESEMBLING THAT OF CARL HUBBELL.

LEE STINE.
NEW YORK YANKEE PITCHING HOPEFUL UP FOR HIS THIRD BIG LEAGUE TRIAL WITH KANSAS CITY LAST YEAR, HE HAD PREVIOUS TRYOUTS WITH THE WHITE SOX AND THE REDS

Eight Clubs Unbeaten In Intramural Play

By BILL PHELPS

With just a little over a week to go, the intramural softball race is still cloudy with no outstanding pennant-bound teams as yet. Only one team is sure of a berth in the playoffs.

Theta Chi, first division pace-makers, are the only ones who are virtually certain of their playoff position. The Theta Chis are undefeated, and have only one game left to play, that with the cellar-dwelling Sherry Ross outfit. Even should the hallmen pull the impossible, and the second place Zeta hall team win their game over Kappa Sigma, the hill-dwellers would still be in a tie for first in their league.

Possible Winners

The second division has two possible winners in what should be a scorching finish. Phi Delta Theta leads the pack with four wins and no defeats, and has a one-half game edge over the DUs, who have only three wins and are defeatless. The Phi Dels would seem to have the edge with only one game to play, but that game is against the DUs who have a pitcher named Bill Jones who has waltzed through all opposition so far, and the other DU game is with SAE, not a contender.

Omega hall leads the pack in the third division, and is the only undefeated team, but it's too early to forecast a winner there. The Omegas are followed by the SPEs, whose one defeat has been at the hands of the hallmen. Omega plays two games, with the Fijis, who have won one and lost one, and the winless Sammies. The SPEs play one, also with the Sammies.

Anybody's Race

Division 4 is anybody's race. There are three undefeated teams, the Betas with two wins, and Gamma hall and the Canard club with

one victory apiece. They all play each other, and it's a toss-up for first.

Phi Sigma Kappa roosts all alone at the top of division 5, but they may not be there long. They have

(Please turn to page eight)

Palm Beach SUITS

Featured by

DeNeffe's



In white and pastels, sizes 35 to 44 in regulars, shorts and longs, priced—

\$17.75

Slacks . . . \$ 5.50

Single Coats 12.25

Formal Coats . . 13.50

DeNeffe's

Look for the Label



THE MAN'S SHOP
BYROM & KNEELAND
32 E. 10th St.