

# Sophs Cancel Cropp Contract For Meyers'

## Change of Orchestras Is Announced by Dance Committee; Event to Have Nautical Motif

As a result of the popularity of Gus Meyers' orchestra at the recent homecoming dance, sophomore informal directors yesterday cancelled a contract with George Cropp's Winthrop hotel orchestra and hired the campus band for the dance Saturday, November 14, in McArthur court, which will be a highlight of the season.

Along with the change of orchestra for the annual campus affair, chairmen announced decoration plans built around a "Yacht Club" motif. A model of a modern yacht will rise from the center of the floor, thrusting a spirelike mast into the colorful streamers which will serve as a ceiling.

Decorations Nautical Decorations will be carried out in nautical colors, and students can expect "ship-shape" details throughout. Gus Meyers' orchestra will ride the ship in the center of McArthur court, and panels of life on the "bounding main" will be placed around the sides, decoration heads said.

Tickets for the informal will go on sale next week. Sophomore representatives in each campus living organization will act as agents.

Fort Builds Model Ship Sam Fort, decoration designer for some of the most successful dances on the campus, has created a model ship which enhances almost every detail of a full-sized ship. Dancers and songsters have been scheduled for entertainment at intermissions.

### Firing Line

- (Continued from page three)
- New York U. - Carnegie Tech - Carnegie.
- Northwestern - Wisconsin - Northwestern.
- Ohio State-Chicago - Ohio State.
- Oklahoma - Kansas State - Oklahoma.
- Pennsylvania - Michigan - Penn.
- Mississippi - Loyola - Ole Miss.
- Pittsburg-Penn State - Pitt.
- Princeton - Cornell - Princeton.
- South Carolina - Villanova - Villanova.
- Southern Methodist - Texas A & M - SMU.
- Texas Christian - Texas - TCU.
- Army - Muhlenberg - We have too heard of it. Army will win, anyway, about 40 to 0 or better.
- Navy - Notre Dame - Notre Dame.
- Vanderbilt - Sewanee - Vandy will push 'em way down in the Sewanee river.
- Duke-Wake Forest - The Dukes.
- Wyoming-Montana State - Montana.
- Yale - Brown - Yale.
- Thank goodness, that's over. Look at 'em tonight and weep.

### Old Libe to End

(Continued from page one) Moved to the dormitory, now S. H. Friendly hall, in 1899, it remained there until the completion of the present building in 1907. M. H. Douglas, who is at present librarian, took charge in 1908. At that time there were 16,000 volumes in the library. The staff consisted of two regular employees and two student assistants, a striking contrast to the 23 on the regular staff and 50 student assistants which the library employed in the peak year 1929. The present building at first housed in addition to the library, the economics, political science, history, rhetoric and correspondence departments. Today the building has become so congested with library activity that the work

### Last Fee Installment Due Monday, Nov 9, Announces Stalsberg

Last installment of fees is due by Monday, November 9, C. K. Stalsberg, University cashier announced Friday. A 25 cent penalty per day will be assessed after the deadline.

is carried on in nine buildings on the campus.

In 1913 the present stacks at the west portion of the library were erected and the main floor was remodeled to make the reading rooms larger.

In 1929 the reserve reading rooms on the top floor of the library were opened, and in 1925 Condon reserve was opened with the completion of Condon hall.

The library has grown since its beginning from 500 books and reading works to 275,000 volumes to become the third largest in the state, only the Portland library and the state library being larger.

Although the long service and usefulness of the old libe gives it a sentimental attraction, the new building is a great step forward for the University of Oregon.

### Jewett Contest Entry Deadline On November 16

All entries for the Jewett speech contest must be in by November 16, John L. Casteel, director of the speech division, announced today. The contest will be held November 19.

D. E. Hargis, speech instructor, emphasized that experience is not necessary, as each speaker will have an equal chance.

"Alma Mater" is to be the subject of the talk, but the speakers may choose their own sub-topics. The speeches, of the after-dinner variety, should be approximately eight minutes long. The use of notes is not prohibited, but is considered detrimental to the effectiveness.

Prizes are \$25, \$15, and \$5.

### \$5 Prize Offered In Pot and Quill Writing Contest

Pot and Quill, women writer's honorary, is sponsoring a contest among "scribblers" of short short stories, poetry, verse, plays and novels, in commemoration of its eighteenth anniversary on the campus.

Alumni of the organization have donated \$5 as a first prize, and all whose work is judged as meriting membership will be pledged to the honorary.

A box has been placed on the right inside the main entrance of the old libe for contributions. The contest will run until November 25.

### Legal Honorary

(Continued from page one) Hale Thompson has secured the orchestra. The tickets which Harry McCall accidentally sent to the laundry have been returned and he is now trying to sell them.

In order that over-studious law students will not be tempted to remain away from the dance, the law library will be closed Saturday night.

Mussolini allows no books criticizing him to be circulated in Italy. He's not going to allow an author to make a lire out of him.

### Art Museum Will Open for Exhibit

#### Japanese and Other Works To Be Displayed Next Week, Nov. 8-14

A special Japanese exhibit will be held at the art museum this coming week in conjunction with national art week, November 8 to 14 inclusive, reports Mrs. Gertrude Bass Warner, donor and present director of the museum.

The Japanese idea of foreigners will be represented by a number of wood block prints displayed on the mezzanine. Miss Maude I. Kerns, professor of art at the University of Oregon, will have on display a group of her paintings of Japan, which she painted in 1928.

Other foreign ideas of Japan will include a number of wood block prints made by two English artists, Elizabeth Keith and Charles Bartlett, and two American artists, Bertha Lum and Helen Hyde.

The museum will be open on Sunday, November 8, from 3 to 5, Monday through Saturday from 2 to 4 and Sunday, November 15, from 3 to 5.

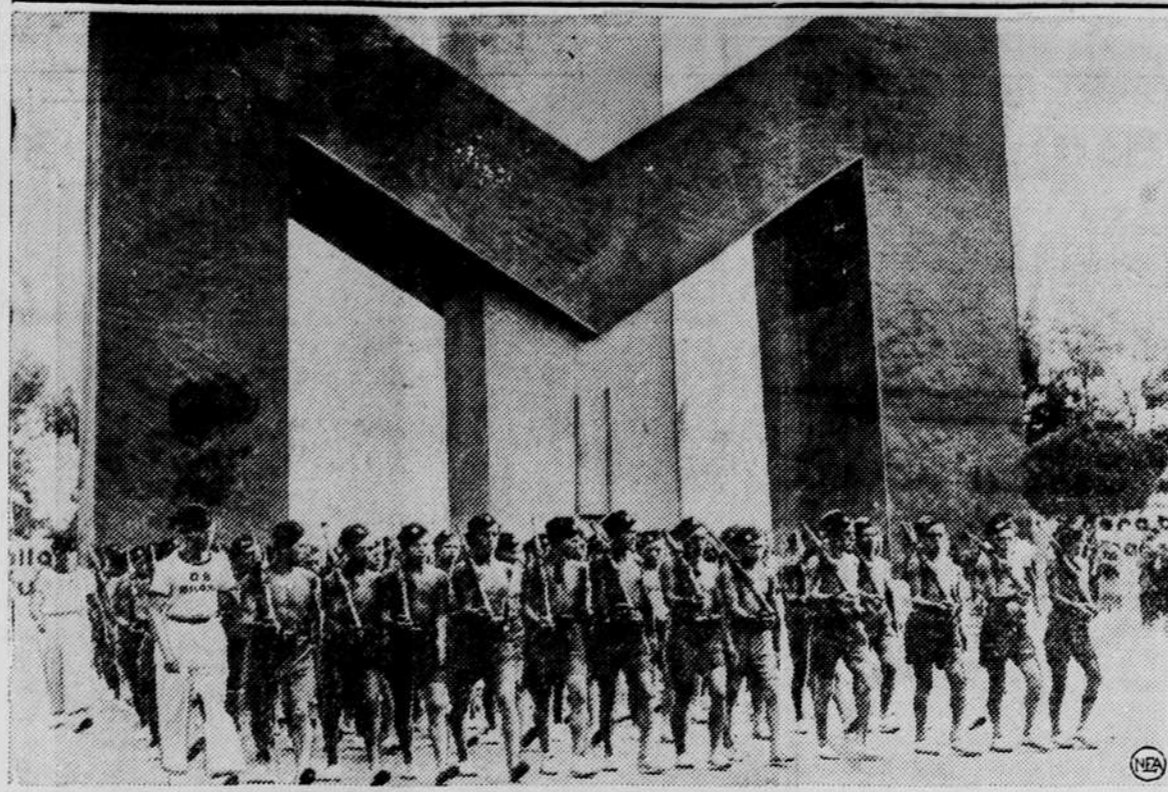
A special exhibit will also be held in the museum library.

Regular hours will be maintained after this week. The museum will be normally open from 2 to 4 on Wednesday and Friday and from 3 to 5 on Sunday. The museum has been closed most of the year up to this time.

Dr. Frank Hibben, assistant professor in archaeology at the University of New Mexico, has a collection of thousands of arrowheads from Europe, Asia, Australia, North America, and South America.

Subscriptions only \$3.00 per year.

### 'M' for Mussolini—Lessons for Young Fascists



The enormous capital "M" through which these young Italian Fascists are marching might, from the guns on the children's shoulders, represent Militarism, but in fact stands for Mussolini. The symbol of loyalty to the Italian dictator was erected at a youth camp near Rome. Through the center of the "M" runs the Fascist emblem.

### Ruth Will Take Over Dunn's Language Class

Clarence J. Ruth, a graduate of the University of Oregon, will take the place of Prof. Frederic S. Dunn, who is ill with pneumonia, for the remainder of the term.

Mr. Ruth holds a bachelor's degree from the University of Oregon and a master's degree from Harvard. He will instruct five classes: first-year Greek, Cicero and Virgil, Caesar's civil wars, Latin pedagogy, and Latin silvae.

Send the Emerald to your friends. Subscriptions only \$3.00 per year.

### Literary Digest

(Continued from page two) ing names. This was done with telephone books, city directories, rosters of clubs and associations, lists of registered voters, classified mail order lists (for rural population), and certain occupational data.

Dr. Frederick E. Croxon and Dr. W. L. Crum, eminent statisticians, pointed out in early October several loopholes in the Digest method. Voters in the highly urbanized or metropolitan districts were not adequately sampled, and there was doubt as to whether the wo-

man's vote was truly representative, for the lists tended to cater to men.

Certain economic, social, racial, and religious groups were weighed in the final result. The Digest poll was also cumulative and did not show last minute changes of undecided voters.

New voters, those reaching the voting age since 1932, could hardly have been sampled under the lists already mentioned and thus were not accounted for. The fact that more individuals stating themselves Republicans in 1932 returned straw ballots than did those claiming to be Democrats also tended to create a bias in favor of Landon.

### New Library Basement To House Rose Display

Rose displays will be featured in the flower shelves housed in the basement of the new library, according to M. H. Douglass, librarian and rose grower. The northwest regional meeting of the Rose society will hold its winter meeting here some time after the library opens.

Mr. Douglass returned the first of the week from Chehalis, Washington, where he attended the second meeting of this society, which was organized in June for the purpose of promoting rose culture in the northwest. Delegates attended the meeting from Vancouver, B. C., Washington, and Oregon.

### Shumaker Will Speak At Westminster House

Sunday activities at Westminster house begin at 9:45. Beth Pratt will lead the worship service, and at 10 o'clock Prof. Kenneth Shumaker, of the English department, will speak and lead a discussion.

Tea will be served at 6 o'clock Sunday evening, and at 6:30 Dr. Norman K. Tully, of the Central Presbyterian church, will speak on "Christian Manhood."

### Young Official Debut Set for Tuesday Night

Hal Young, tenor and professor in the school of music, will be presented by the school next Tuesday evening at 8 o'clock, in his official debut on the Oregon campus.

The recital is to be free; University students and faculty are especially invited. The program will include English songs, early and modern Italian songs, and the serenade from the Student Prince.

Send the Emerald to your friends.

### Variety Offered In YW Activities For Coming Week

The YWCA listed its activities for the coming week today, starting with a discussion by the Community Service group in Francis Willard school on Monday.

The Public Affairs group will hold its first meeting the same afternoon. Girls will get instruction in knitting at the semi-monthly meeting of the Campus Chat on Thursday.

Sophomore commission will be held from 9 to 3 o'clock, and frosh commission officers will be installed by the cabinet at 5 o'clock on Tuesday.

As a feature of Dads' day, a radio will be provided for the broadcast of the football game next Saturday.

### Charm School Group To See Cosmetic Show

The charm school, hobby branch of Philometele, will meet Tuesday at four o'clock at the Alpha Chi Omega house.

Those interested in the art of make-up will see a cosmetic demonstration conducted by a professional beauty operator.

### Room for the gang, TAYLOR'S, ad

Get your gang together and get to that train with a

# 424 Cab

It's cheaper than you think! Phone 424

# PURE... and of finer texture than most anything that touches your lips...

We all agree on this... cigarette paper is important. For Chesterfield we use the best paper that we can buy. It is called Champagne Cigarette Paper. It is made from the soft, silky fibre of the flax plant. It is washed over and over in clear, sparkling water.

A lot of the pleasure you get in smoking Chesterfields is due to our using the right kind of cigarette paper. Chesterfield paper is pure, and it burns without taste or odor.



Remember this... two things make the smoking quality of a cigarette—the tobaccos and the paper. The Champagne cigarette paper on Chesterfields is tested over and over for purity, for the right burning quality. Another reason why Chesterfield wins.

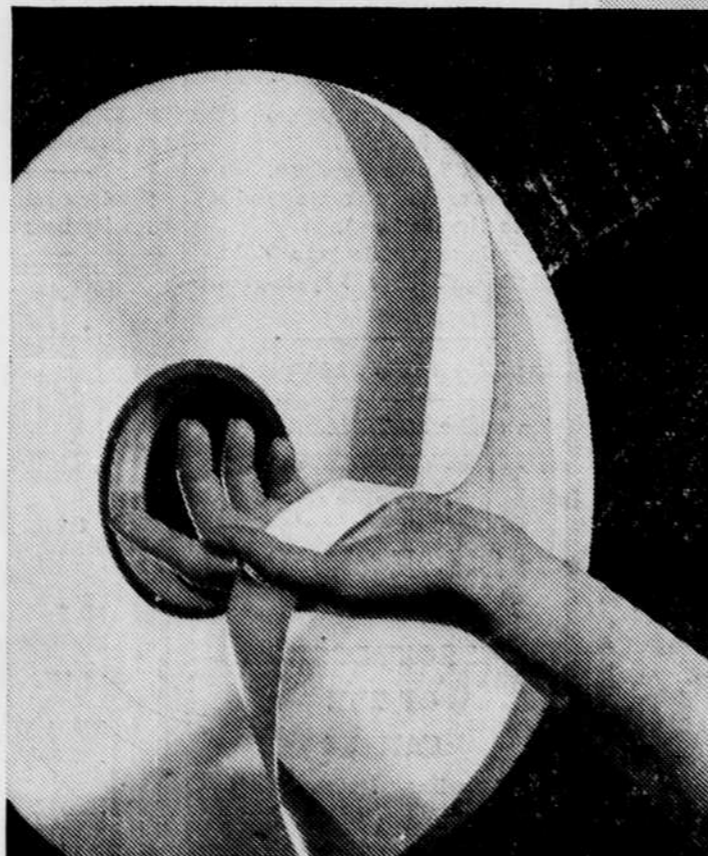


FIRST... Smart Shaping and Cutting! Haircuts and Styling... 50c

LOVE'S OIL PERMANENTS \$2.50 - \$3.50 FREDERICKS PERMANENTS \$5 - \$7.50 \$10

LOVE'S

972 Willamette Phone 991



You'll save a lot of grief later by planning your Christmas list now!

Let us explain our deposit and lay-away plan to you today.

