

Group Studies Defaulted City Of Enterprise

Tax Delinquency Within Town Scrutinized. Map Shown

Report Foreword Written By Herman Kehrli

A detailed study of the financial situation of the city of Enterprise, one of several Oregon cities forced to default on their obligations during the depression, has recently been completed by the league of Oregon cities in collaboration with the bureau of municipal research of the University.

The study, 115 pages in length, considers in detail the agricultural and industrial history of Enterprise and Wallowa county. Tax delinquency within the city itself is analyzed, and further clarified by a map of the city on which the tax-paying status of every parcel of property is clearly indicated. The bonded city debt and the school district debt are studied. Basic considerations for planning a financial adjustment program with the city's creditors are also detailed.

McKinley Supervises
The survey was made by Charles McKinley, professor of political science at Reed college and consultant on administration for the league. McKinley was assisted in the work by Clifford W. Ham, field consultant for the American municipal association, and Arthur M. Cannon, research assistant for the bureau of municipal research.

The purpose of the survey was "to prepare the information needed by the city officials and bondholders of Enterprise before any lasting adjustment of their interests could be expected," according to the foreword written by Herman Kehrli, director of the research bureau. It was undertaken as a "demonstration" survey, which it is hoped will serve to guide other cities of the state in assembling information helpful to city officials and bondholders in determining the course which will make it possible for the city to maintain itself as a "going concern" and at the same time provide a method of settlement which will yield the creditor the greatest possible return.

Others in Arrears
At the time the survey was undertaken it had been conclusively shown that many small cities were in the same financial difficulties as Enterprise, where increased tax rates brought only decreasing returns and increasing delinquencies. Neither existing obligations or the obligations which might be incurred with a refunding plan could be met.

That the survey is considered a valuable contribution to the field of municipal finance is indicated in a letter from Carl H. Chatters, executive director of the Municipal Finance Officers' association of the United States and Canada, to Professor McKinley, in which he stated, "I want to compliment you upon this work and to tell you frankly that it is by far the best thing I have seen along this line."

Campus Brevities

Guests of Gamma Phi Beta—Margaret De Young and Dorothy Peterson, both of Portland, were weekend guests at the chapter house. The girls are former students of the University and are affiliates of Gamma Phi Beta.

Returns to Campus—Doug Ward returned to the campus Sunday after spending the weekend in Portland with a class in foreign trade.

Visits in Portland—P. Halley Johnson, a graduate of the University, visited friends in Portland last week.

Returns From Portland—George Neuner returned from Portland Sunday where he visited his parents and saw the pro football game.

Guest of Chi Omega—Mrs. L. F. Booth of Portland visited her daughter, Winifred Pembroke, last Sunday at the Chi Omega house.

Spends Weekend at Home—Elizabeth Calef spent the weekend in Portland where she visited with her parents. She returned to the campus Sunday evening.

Visits Home in Newberg—Ernie Leffler visited during the past weekend with his parents in Newberg and returned to the campus Sunday.

Drove to Portland Sunday—George Massey and Tony Moore drove to Portland Sunday, returning Sunday evening.

Guest of Pi Beta Phi—Alene Walker, '37, of Portland, spent Saturday and Sunday visiting at the Pi Beta Phi house.

Visit in Portland—Reg Brady and George Young spent the weekend visiting friends and relatives in Portland. While in Portland

Intemperate Robins Stagger About City; People Just Laugh

Daytona Beach, Fla., Feb. 4.—Hundreds of drunks teetered about today.

Police and county officers did nothing about it. Citizens just laughed and tried to keep their cats penned up.

The drunks were southbound robins, thousands of which stopped off here to eat their fill of palmetto berries.

The berries on the many palmetto trees in Daytona beach ripen in January and by February have fermented.

The robins were intemperate.

they attended the pro football game.

Graduate Visits Campus—Charles F. Todd, graduate of the University, was the weekend guest of Charles F. Sullivan.

Return to Campus—Marshall Harrison and Bill Thomson returned to the campus Sunday after spending the weekend with friends in Portland.

Spends Weekend at Home—Jack Snyder spent the weekend visiting with his parents at his home in Portland.

Psychology Party Will Make McKenzie Trip

Psychology majors and staff members will leave the campus Saturday morning for a snowball spree up the McKenzie. According to L. F. Beck, assistant professor of psychology, his colleague, Calvin Hall, formerly of the University of California, will demonstrate the art of skiing.

The party will play and feast all day, returning Saturday evening.

BECK ADDRESSES SCOUTS

L. F. Beck, assistant professor of psychology, addressed a meeting of Eugene scout masters in Condon hall last Sunday, on "Psychiatry and the Boy." He discussed the role of the emotional conflicts in the adjustment of the adolescent boy.

Resume

(Continued from Page One) victims who had scheduled parades, mass meetings, and demonstrations to mark the day.

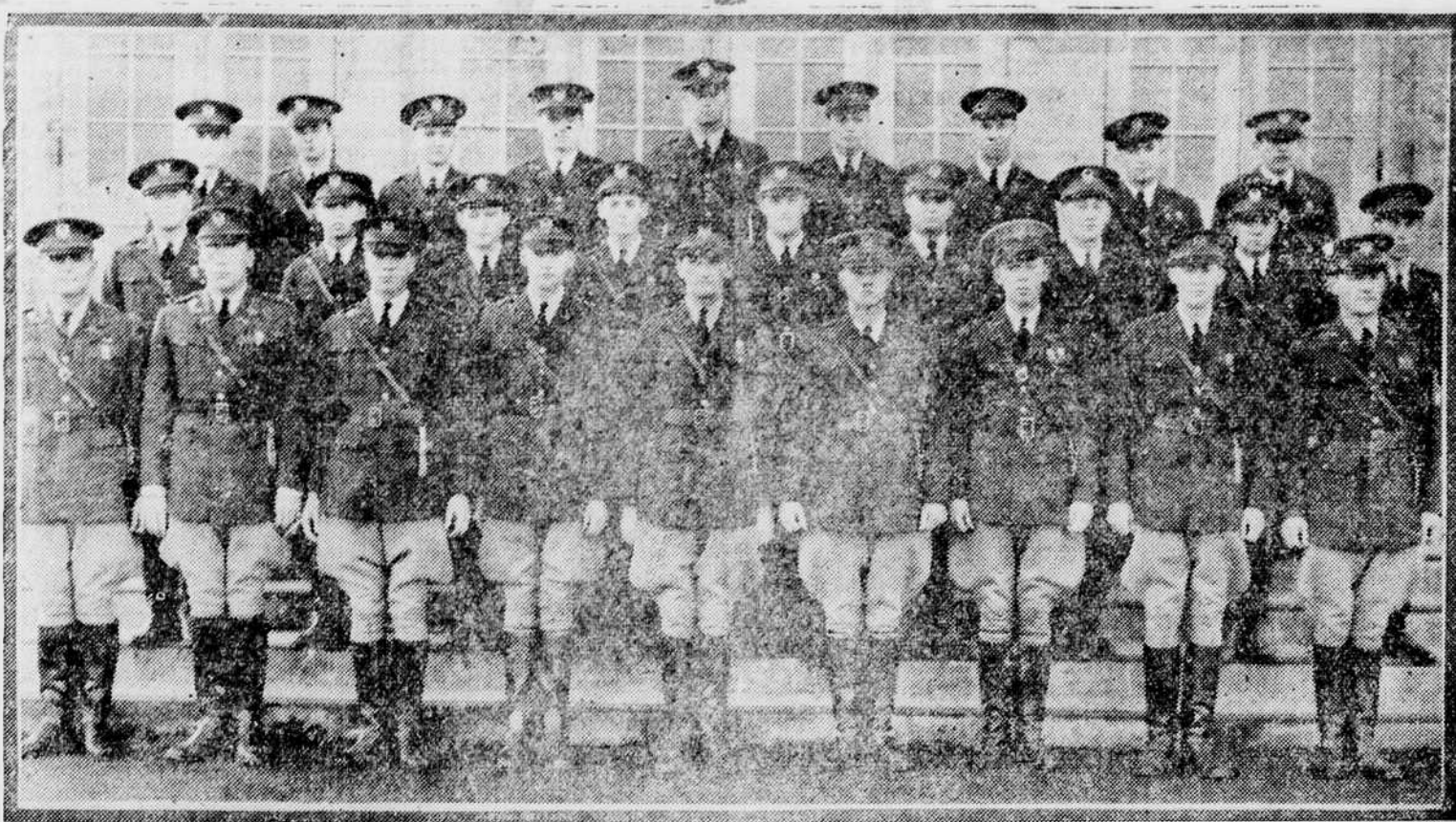
Bardo Mentions Moore

WASHINGTON—A shipbuilding firm that sought presidential, diplomatic and gubernatorial pressure to keep down competition was described today to the senate munitions committee.

Clinton L. Bardo, bulky, white-haired former president of the New York shipbuilding corporation, identified for the committee a cluster of letters he had written to Governor A. Harry Moore of New Jersey, now United States senator.

Moore was described as having communicated with President Roosevelt and Postmaster General Farley to block a \$35,000,000 loan requested by gulf industries, headed by Laurence R. Wilder, to fit it

R.O.T.C. Students at University of Oregon Made Cadet Officers



Student officers of the Reserve Officers Training Corps at the University of Oregon selected from the upper division classes, are now hard at work on the units 1935 program. Pictured here, they are, left to right, front row—Howard Clarke, Portland; Bill Nelson, Milwaukie; E. W. Thompson, Heppner; William K. Shepherd, Portland; Douglas M. Pelton, Milwaukie; Roland L. Rourke, Eugene; W. Boyce Stanard, Eugene; Floyd E. Lees, Portland; Charles O. Watkins, Eugene. Second row—Robert L. Zurcher, Portland; Jack H. Granger, Ontario, California; Charles J. Kleinegger, Portland; Morris H. Perkins, Milwaukie; James M. Wells, Hillsboro; James W. Elliott, Portland. Third row—Miles E. McKay, Eugene; Gilbert A. Wellington, Portland; M. Keith Watson, Portland; G. Reynolds Allen, Portland; E. Burke Tongue, Hillsboro; Malcolm C. Bauer, Pendleton; Bill W. Berg, Eugene; Raymond C. Hendrickson, Eugene; Percy F. Veal, Portland. Officers not in the picture include, Joseph Renner, Eugene; Ralph Terjeson, Helix; Ray J. Morse, Eugene; Gardner Frye, Eugene; and Robert Parke, Long Beach, California.

for engaging in naval shipbuilding at Pensacola, Florida.

Labor Split Widens

WASHINGTON—The split between the administration and the American federation of labor was widened measurably today when President Roosevelt pointedly told the organization that some decisions concerning labor were for him alone to make.

The president spoke directly of the automobile labor board headed by Leo Wolman, pointing out that it was for his to say whether the board was fulfilling its duties and should be continued.

A letter containing this statement was his answer to the federation's demand that the board be abandoned because, the A. F. of L. said, its employee elections and the method of collective bargaining it provided were illegal.

English Royal

(Continued from Page One) the Glasgow member said he had heard 30,000 to 40,000 pounds was going to be spent on the king's silver jubilee celebrations this spring.

Assessment Continues
"I say it should be spent," he cried, "in erecting black flags throughout the length and breadth of this country for a day of national mourning for the common people who are being destroyed and degraded by this national government."

"If your class goes to war," he said further, "you will appeal to the workmen to help you. And I hope when that day dawns the

workers will use their rifles on the ruling classes."

McGovern Interprets
McGovern, who has been in the house of commons since 1930, interrupted the speech from the throne in 1933 to ask "What about abolition of the means test and unemployment costs?"

A group of about 50 alleged communists created a disturbance in the central lobby of the commons tonight, shouting "we want bread" and other remarks indicating their opposition to the dole plan. Police quickly silenced and ejected them from the building.

Parliamentary rules in the house of commons prohibit the mention of King George in debate but such firebrands as McGovern and his

fellows radicals have burst forth against royalty several times in recent years.

Particularly conspicuous for his outbursts has been the member from Glasgow, who has been ejected from the commons several times.

Louis A. Wood

(Continued from Page One) population is greater today than ever before; that America needs a more scientific approach to and a better understanding of its transplanted peoples and their inadequately adjusted American born children; that we need to develop more avenues and create more oc-

casions for drawing into partnership the best elements of native and foreign-born to work for a more complete ethnic integration on a national scale.

The institute is also carrying on work in social cases for the individual immigrant and emigrant, furnishing advice and disseminating intercultural knowledge among local communities.

The National Institute has its headquarters in the R. K. O. building, Rockefeller Center, New York City. The president is Leifur Magnussun, formerly United States representative at the international labor office, Geneva. A Pacific coast committee has been formed already, with headquarters at San Francisco.

Students Dropping Must Be Withdrawn By Social Chairman

The dean of women announced Monday that all social chairmen should withdraw any students who have dropped out of school and have not gone through the necessary formalities at the registrar's office. Grades not corrected at this office will count against the house average.

Art League Will Give Beaux Arts Ball February 22

Wentworth's Band Slated To Play for Dance

Masks and costumes will be worn again this year at the annual Beaux Arts ball February 22 in Gerlinger hall under the auspices of the Allied Art league.

The dance is to be all-campus and informal. It is reported that novel decorations for the affair are being planned by the committee in charge. Dean Wentworth's orchestra has been engaged to play for the ball. Wentworth's band was one of the two that played for the President's ball held last week in the Igloo.

The general chairman in charge of the plans for the dance is Dave Lowry, president of the league. His assistants will be Hallie Johnston, decorations; Patricia McKeen, publicity; John Metcalf, programs; Francis Helfrick, patrons; Tom Blanchard, tickets; Constance Kletzer, features; and Clyde Keller, cleanup.

According to reports prizes will be given for the best costumes. The exact nature of these prizes will be announced later.

Mildred Erickson, ex-'31, is field secretary for the camp fire girls in Portland. She plans to continue her study in physical education on the campus next fall.

Miriam B. Campbell, '30, of Portland is a member of the faculty at the Arlington high school this year.

Elsie V. Moller, '29, is a member of the faculty of the Marshfield high school this year.

Will Rogers, March Of Time Now at Mac

By Cynthia Liljeqvist
Emerald Theater Editor

Time magazine again caught the public between the eyes in its unique new reel creation, The March of Time, now showing at the McDonald.

In its finished form the product is smooth running and seemingly simple to produce but in reality it required many months and \$100,000 expenditure to perfect.

In contrast to the usual news reel, Time takes a new event and reenacts it exactly as it happened using, if possible, the people who were implicated. The result is a well molded dramatic incident with a natural time sequence portrayal. Time itself describes this process as "pictorial reporting." The intimate glances into the lives and actions of prominent people, the completeness of detail and the novelty of seeing news as it happens, all bid fair weather sailing for "The March of Time."

If you number among Will Rogers' fans, you will find ample amusement in "The County Chairman," a story of an old lawyer, Rogers, who revenges himself against the man who stole his beloved, by managing a political campaign against him years later. Rogers does his usual droll, lovable, human role as a master in practical politics.

The scene is laid in 1900 or thereabouts in Tomahawk county, when the first autos bounced about the streets. Evelyn Venable played a weak role as the political prize. She is better in the supernatural role now playing at the Colonial.

The humor of the show lies mainly in Roger's political quips and the nostalgic effect of the old times.

The plot is twisted uningeniously to accommodate Rogers but makes a riotous finale in the wedding scene.

Ray W. Hardman, '32, is principal of the Pine City high school at Echo, Oregon.

Ernest M. Jachetta, '31, is now a member of the law firm of Lonergan, Crouse, and Jachetta of Portland.

Elizabeth L. Bruhn, '34, of Portland, has a teaching position in the high school at Newport.

TO RELIEVE FATIGUE...



GET A LIFT WITH A CAMEL!



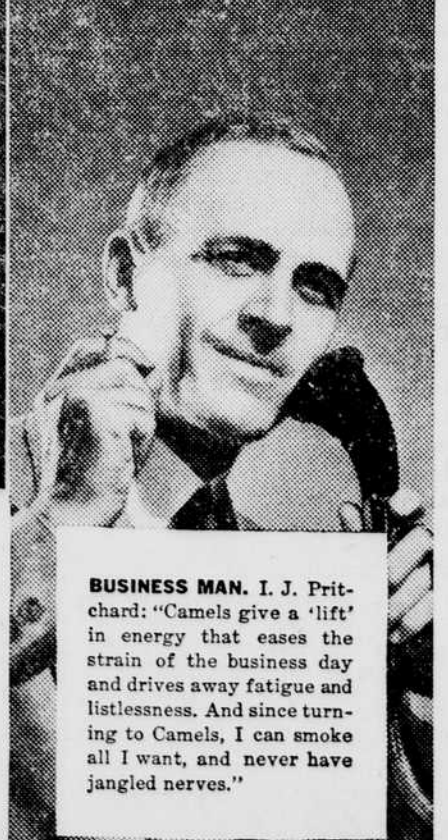
ALFORD ARCHER—SPECIALIZING IN AGRICULTURE: "Believe me, my schedule is a pretty full one. Lots of classes, lots of night work, and lots of 'lab,' too. It's interesting—but hard work! I smoke a lot because I find that Camels keep me on the alert... banish that drowsy, 'done-in' feeling. And what a swell taste they have! It's a taste you don't get tired of—makes you come back again and again for more. No matter how much you smoke, Camels don't interfere with healthy nerves."



JOIN THE NEW
CAMEL CARAVAN
with ANNETTE HANSHAW
WALTER O'KEEFE
GLEN GRAY'S CASA LOMA ORCHESTRA
TUESDAY 10:00 P.M. E.S.T.
9:00 P.M. C.S.T.
8:00 P.M. M.S.T.
7:00 P.M. P.S.T.
THURSDAY 9:00 P.M. E.S.T.
8:00 P.M. C.S.T.
9:30 P.M. M.S.T.
8:30 P.M. P.S.T.
OVER COAST-TO-COAST WABC-COLUMBIA NETWORK



AVIATOR, Col. Roscoe Turner: "A speed flyer uses up energy just as his motor uses 'gas'—and smoking a Camel gives one a 're-ill' on energy... a new feeling of well-being and vim. Camels cheer me up! And they never tire my taste or upset my nerves."



BUSINESS MAN, I. J. Pritchard: "Camels give a 'lift' in energy that eases the strain of the business day and drives away fatigue and listlessness. And since turning to Camels, I can smoke all I want, and never have jangled nerves."

EUGENE'S OWN STORE
McMorran & Washburne
MERCHANDISE OF MERIT ONLY
PHONE 2700

You'll never dream of icebergs in
Van Raalte's Slumber-Wyns
\$1.75 and \$2.50

Nor will you wake up roasting. Toasting is the word... just comfortable. For Slumber Wyns are a SO-SOFT COTTON in a gay stripe rib knit. You'll say "CUTE" when you see them and "GRAND" when you wear them.

Pajamas (in petal pink, orange or light blue) are sketched.

SECOND FLOOR

AVOID EYE STRAIN

Eye Strain Is Caused by
Students studying with glasses which have gotten out of adjustment and consequently out of focus.

Loxit—prevents this and stops eye strain. Wouldn't you like to wear a pair of glasses that would retain their original correct fitting adjustment. Loxit mounted eye glasses will have this feature. Check your glasses today.

DR. ELLA C. MEADE
OPTOMETRIST
14 West 8th Ave. Phone 330

Copyright, 1935
R. J. Reemelin Tobacco Company
Winston-Salem, N. C.

CAMEL'S COSTLIER TOBACCOS NEVER GET ON YOUR NERVES!