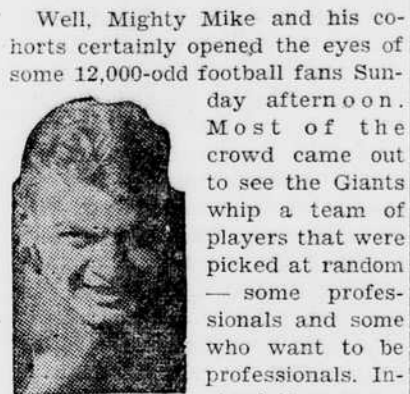


Simp's Glimpse

Oregon Footballers See West All-Stars Trim East Giants
By Ned Simpson



Well, Mighty Mike and his cohorts certainly opened the eyes of some 12,000-odd football fans Sunday afternoon. Most of the crowd came out to see the Giants whip a team of players that were picked at random—some professionals and some who want to be professionals. Instead they saw a bunch of all-star maniacs play 60 minutes of fine football, stop every Giant thrust, and collect nine counters for themselves to win the ball game.

And what ball these professionals play! It's faster, rougher, and much more finished than the game played by most college teams, mainly because the men have all played four years of college ball plus a couple of seasons in the pro ranks, and they have learned and benefited by the two different schools until they know just what to do almost by instinct. The rules they play under also have a speeding-up effect on the game—at least that was the consensus of opinion of the members of last year's Webfoot grid squad who journeyed to Portland to see the game.

The rule—or the lack of the rule—about when a play is stopped was the one that seemed strangest to the college players. In the pro version the ball is not dead until the man is down, several are lying on him, and the whistle has blown. In the college game, as you know, the ball is dead when any part of the carrier's body, other than his feet or hands, touch the ground. The college rule was put in effect in an effort to reduce fatalities which for the most part had nothing to do with college football, but were the result of kids playing sandlot ball without the proper supervision or equipment. Chalk one up for the professional game.

The next regulation which irks the college player is the one which requires that a forward pass must be thrown from at least five yards back of the line of scrimmage. The professional

Ducks to Entertain Vandals Friday and Saturday Night

Upset Victories Mark Instamural Volleyball Tilts

Donut Teams In Fierce 'A' And 'B' Tilts

Sammies, Abba Dabbas Provide 'A' League Excitement

Sigma Chi Dumps Phi Phi In Other Thriller

Sigma hall kept pace with the Betas in league IV by easily maintaining their undefeated record at the expense of the Phi Sigma Kappa sextet yesterday at the men's gym.

With a possible championship in sight the hallers took no chances of being upset, and went right to work on their opponents in a businesslike manner. The first game was won by a 15-7 score and the second by a 15-8 count. Sigma hall will tangle with Beta Theta Pi on Wednesday at 4:40 p. m. in a struggle which will determine the winner of league IV.

Sigma Alpha Mu wound up their season with a victory, thanks to a great comeback which saw the Sammies come through to win the last two games of the match against the Abba Dabbas.

The Abba Dabbas, playing with only four men, started off in fine style by taking the first tilt by the lopsided score of 15-2. From there on however, the Sammies entirely dominated the play. Led by Louis Rotenberg they easily annexed the next two games 15-8, 15-2 for the match victory.

In a "B" league game Sigma Chi handed Phi Kappa Psi its first defeat of the season in an exciting match that went the full three games before it was decided.

Sigma Chi ran wild in the first game to win by a score of 15-3. In the second tilt, however, the Phi Psis turned the tables on them to even up the games at one all. In the deciding struggle, the Sweethearts grabbed an early lead and held it, and as a result won the game and match with a 15-8 victory.

Phi Gamma Delta's "B" team continued their winning streak with a 2-0 victory over Delta Tau Delta.

In the other scheduled match, both Sigma Nu and Phi Kappa Alpha failed to show up, and as a result both sextets will be charged with defeats. It was a "B" match.

can toss the apple from any point he wants as long as it is still behind the line of scrimmage. How the present collegiate rule came to be I don't know, but some styles of football are ill adapted to cope with that kind of forward pass, and their opponents probably sought to nullify their opponents' offense by rail-roading the rule through. It has slowed down the college game, besides taking away a decided offensive threat.

Another thing that was radically different was the position of the goal posts which are moved back up on the goal line in the "money" game. This gives the offense another break, as it makes it easier by ten yards to kick a field goal. Finally, the fact that a coach can substitute the same man any number of times in the same quarter also opens the game up for the offense. Take Sunday's game for an example. Coach Schissler had little Ike Peterson, formerly of Gonzaga, who was constantly put in when the All-Stars had the ball. As soon as the Giants would take possession, out would come Ike, the offensive threat with all his speed and elusiveness, and in would go Hal Pangle, who is a giant on defense. The same thing was done with Phil Sarboe—who, by the way, is one of the greatest passers we have ever seen—and Johnny Bianco.

Next time the Intercollegiate Football Rules committee meets, let's hope that the players are given a chance to vote that the game be changed to suit those who play it rather than those who are living at it!

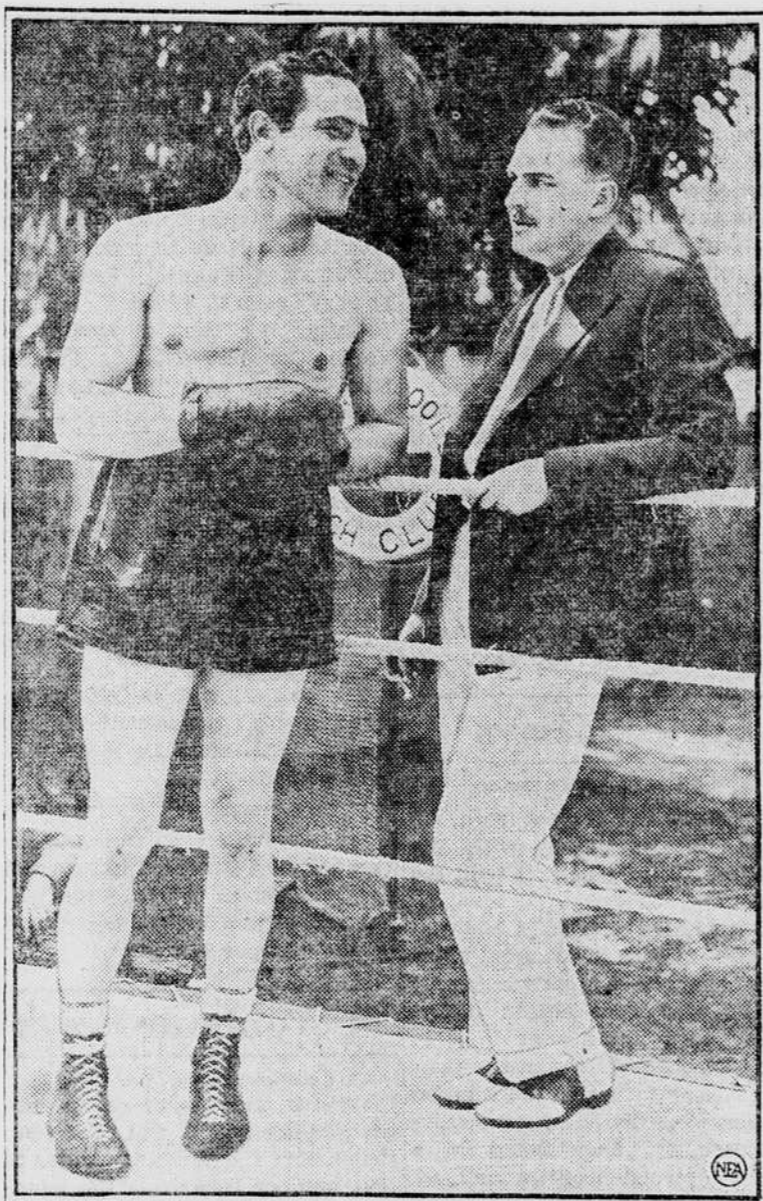
ASUO, PLEASE NOTE
From Brooklyn comes the news that the student activity fund at Brooklyn Polytechnic Institute last year had a surplus of \$69,000 and there was no legal way to spend it.

Oregon Emerald

Ned Simpson, Editor

UNIVERSITY OF OREGON, EUGENE, TUESDAY, FEBRUARY 5, 1935

The Playboy Champ



Maxie Baer, world's heavyweight champ, is shown here as he trained for his recent exhibition bout with Jimmie Maloney, the Smilin' Cop. Max clowned, Maloney was careful, and "the Champ" won the "fight."

Silver Leads Teammates For Frosh Basketball Scoring Race Honors

The following is the list recently compiled by Bruce Hamby, A.S.F.O. publicity director, of the points scored by the members of the 1935 frosh basketball team.

Dave Silver, yearling deadeye, leads the list with 91 counters to his credit in the games already played. His nearest rival for scoring honors is Stafford, with 68 points, who is in turn followed by Vernon Moore, with 22.

The complete data follows:

Players	Pt.	Ft.	Pf.	Total
Silver, d	39	13	9	91
Stafford, f	30	9	5	68
Moore, g	8	6	8	22
Wagsdale, g	9	4	2	22
Lasselle, f	8	0	9	16
Austin, f	7	2	4	16
Danner, c	6	0	5	12
Dick, f	5	2	4	12
Canessa, f	5	3	7	13
Williamson, g	5	0	4	10
Haas, f	1	1	0	3
Beard, g	1	0	2	2
Purcell, g	1	0	0	2
Crawford, g	0	1	0	1
Totals	124	49	59	288
For: 288.				
Against: 222.				

Some Winner!



A proud girl is Paulette Goddard, Charlie Chaplin's leading lady, shown here just after she won a medal in the Lake Arrowhead Ski Club's two-mile endurance contest. And in spite of the fact that Paulette seems to have taken at least one tumble during the race.

Dulcie Mae Lyssell, '32, is teaching Spanish, U. S. history and typing in the Hood River high school.

Women's Donut Schedule Pairs Swim, Hoop Foes

Theta, Orides Mix in Pool; Two Maple Tilts on

Kappa Alpha Theta and Orides will swim today in the second inter-house competitive meet. Susan Campbell, winner of the first contest over Chi Omega, will meet Delta Delta Delta Wednesday afternoon.

Basketball games scheduled for today are Alpha Chi Omega vs. Alpha Omicron Pi at 4 p. m. and Alpha Delta Pi vs. Hendricks hall at 5 p. m.

Sigma Kappa will meet the Orides at 5 p. m. Wednesday in the main gymnasium while Gamma Phi Beta will play against Alpha Chi Omega at 5 p. m. in the outdoor gym.

Alpha Delta Pi took honors Friday when they defeated the Pi Beta Phi basketball team by a score of 31-25. Barbara Weston was high score woman for the Pi Phi team with 19 points, and Gretchen Smith starred on the Alpha Delta Pi team with 23 points.

Officials for the game were Miriam Butler, Dorothy Bergstrom, secretaries; Eileen Donaldson, Jennie Misely, timers; Sue Moshberger, umpire; and Margaret Duncan, referee.

Bossing, Author

(Continued from Page One)
velopment in education is also recognized. The central place emotions should have in education, the direct significance of society's conventions, thoroughness with which definite techniques are suggested for the development of aesthetic and ethical appreciation occupy an important place in the work.

The book which was published by Houghton Mifflin company has just reached Eugene. Dr. Bossing received the degree of doctor of philosophy from Chicago university in 1925. He has been a member of the faculty here since 1927. Dr. Bossing has done extensive research in education and also has written for a number of publica-

Lloyd H. Brown, '32, is teaching in the Reedsport high school.

INTRAMURAL VOLLEYBALL SCHEDULE

- 4:00 p. m.—Phi Sigma Kappa vs. Kappa Sigma "B."
- Delta Upsilon vs. Abba Dabba "B."
- 4:40 p. m.—Sigma Alpha Mu vs. Sigma hall "B."
- Phi Delta Theta vs. Phi Gamma Delta "A."
- 5:20 p. m.—Gamma hall vs Theta Chi "A."
- Sigma Phi Epsilon vs. Phi Kappa Psi "A."

Charley Predicts Detroit Victory in Pennant Race

By Earl J. Hilligan
Associated Press Staff Writer.
DETROIT, Feb. 4. — (AP) — "Silent Charley" Gehringer, who this summer will round out a decade of high-class second-basing in the American league, today poured forth about as many words as came from his modest lips during the entire 1934 campaign.

He broke right down and announced that Detroit's infield "perhaps isn't going to break any legs" and looks good enough to him to again be the main cog which will

carry the Detroit Tigers through to another American league flag.

"Any team has to have breaks to win a pennant," said Charley, "and with our young infield I'll bet—well, I'll wager a guess—that we come down in front again."

The Tiger second sacker "agreed with the boss that New York will be the club to beat next summer." The boss—Frank J. Navin, president of the Detroit Baseball Co.—recently said the club that beat the Yankees would win the flag, and said the Tigers will turn the trick.

Zane Discusses Old, Modern Art

N. E. Zane, associate professor of design in the art school, talked on the various phases of art at a meeting of the associate members of Phi Beta, national music honorary, at Gerlinger hall yesterday afternoon.

Zane pointed out that there are two kinds of art, one by which the artist duplicates nature and the other in which the artist seeks to show the limits of abstraction to which he can go. This last type is modern art.

Slides were shown with the lec-

ture to illustrate fundamentals such as balance, poise, distribution, direction and rhythm, and examples of modern and realistic art.

After the lecture, tea was served in the lounge. Phi Beta pledges who served were; Metty Lowell, Bernece Lewis, Bertha Sheppard, Mary Louise Busche, Rosemary O'Donnell, and Phyllis Adams.

EMBARRASSING
A dance committee at Virginia Military Institute had some embarrassing moments when Eddie Duchin refused to play until a grand piano could be imported from the next town.

Send the Emerald to your friends.

DANCE Programs

See Our Big Assortment of Valentines.

Valley Printing Co. Stationers
Phone 470 76 W. Broadway

American Humor Popularizes Jazz

Jazz is a competitor of classical selections, because instructors do not take into account the desire for humor in American music, stated S. Stephenson Smith, professor of English, before the monthly luncheon of Eugene music teachers in the Osborne hotel, at noon, yesterday. Madame Rose McGrew, professor of voice at the school of music, presided.

Professor Smith explained that legitimate music can outwit jazz by introducing musical wit and humor into the schools for music. He said Dvorak and Brahms got their themes from spiritual and students, and that teachers can likewise present whimsical selections.

RIDE OR SLEEP

Students who reside in the dormitories at Columbia university will have to sleep on cots again this year because the elevators refuse to work.

Last spring the students protested to the university officials, declaring the cots were too small for comfort, so the administration promised to set aside \$90,000,000 for the purchase of large and comfortable beds. Now, however, officials have announced, that as a result of most of the dormitory elevators having broken down, the \$90,000 previously allotted for new beds, will have to be spent for new elevators.

SENIOR CANDIDATE

George Cannady, flashy colored backfield man at Willamette university, is running for president of the senior class.



THE STICKEM SISTERS!

Lovely girls!... the greatest pair of Clinging Vines that ever came to Kollidge. Clever no end! Can mend and label books, mount paper on the drawing board and help in countless other places where paper or cloth must be stuck to each other or to wood, cloth, glass or leather. Ask for 'em by name!

HIGGINS' DRAWING BOARD & LIBRARY PASTE
CHAS. W. HIGGINS & CO., 271 9th St., Bklyn, N.Y.

Pawed by a Pudgy Wudgy?

... light an Old Gold



When trapped by a Mushy Mamma... don't give way to dark despair. Count ten and light a sunny-smooth Old Gold. Its fragrant fumes will enchant the matron's senses... while you slip spryly from her arms. Darn clever... these O.Gs!

AT TRYING TIMES... TRY A Smooth OLD GOLD

CLASSIFIED ADVERTISING



BEAUTY SALONS
Individual finger waves, 35c.
Love's Beauty Salon. Phone 991.

DRESSMAKING
PETITE SHOP
573 13th St. E. Phone 3208.
"Style Right—Price Right!"

NEW SHOP
Aladdin Shop at White Electric Co.

OREGON STUDENTS
Have your car serviced correctly at Ernie Danner's Associated Service Station. "Smile As You Drive in '35." Phone 1765. Corner 10th and Olive.

FOR SALE
FOR SALE—Large combination radio and phonograph. Phi Gamma Delta. Phone 660.

FOR SALE—Set of golf clubs, good condition. Call Grant Thuemmel, 129.

1 time 10c per line.
2 times 5c per line.

PHONE 3300
EMERALD
CLASSIFIED
DEPARTMENT