

# Leighton and VanLoan Get Appointments

### Members of Education Faculty Honored

#### Largest Group of University Staff In Years Attends Association Meetings in Spokane

The school of education faculty played a prominent part at the Inland Empire Educational association meetings in Spokane last week. Two members of the staff received appointments for the coming year.

Dr. R. W. Leighton was appointed chairman of the research division, and W. L. VanLoan was made chairman of the junior high school division. Reports of the meetings were made at the dinner meeting of Phi Delta Kappa, men's educational honorary, at the Marriott tea room last night.

**Work Demonstrated**  
Dr. B. W. DeBusk of the University faculty was furnished with problem children from the various Spokane schools as a means of demonstrating his work. He also spoke to the English teachers on remedial work in the reading of students who read so poorly that they do not understand what they read.

Dean J. R. Jewell spoke at the state Kiwanis dinner held during the meetings. He also spoke Thursday afternoon at the section on educational and vocational guidance meeting.

**Other Speakers Named**  
Other speakers were Miss Jessie Gray, president of the National Education association; F. W. Hart of the University of California, and Dr. Alexander Meikeljohn, formerly president of Amherst college and later of the University of Wisconsin experimental college.

The Inland Empire group has been meeting for more than 25 years. Dean Jewell said that by common consent, this year's meeting was one of the best programs in recent years. Superintendent C. A. Rice of Portland served as president.

Other members of the University faculty who attended were Dean Hazel P. Schwering, Mrs. Alice B. Macduff, Kenneth Shumaker, F. L. Stetson, Dr. N. L. Bossing, and VanLoan. Dean Jewell remarked that this is the largest delegation from Oregon that has attended the meetings in past years.

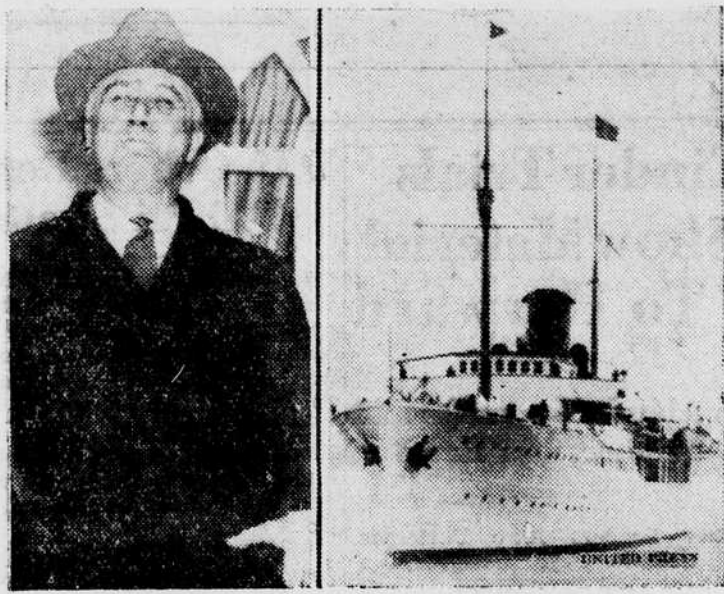
## Hosiery Mill Manager Visits Here for 2 Days

Clem W. Price, manager of the Realsilk Hosiery Mills of Indianapolis, whose visit to the University campus has been delayed from last week, will be here today and tomorrow.

Price will speak before Prof. N. H. Comish's class in sales management. During the rest of the day from 10 to 12 tomorrow he will conduct interviews with any student who desires to work under the undergraduate sales plan of the company or who desires a permanent position in the graduate division.

"Patronize Emerald Advertisers."

## Vacation for President



The chief executive of the nation vacations occasionally, and President Roosevelt is making a 10-day fishing cruise in southern waters. He is shown above as he departed aboard Vincent Astor's palatial yacht, Nourmahal. At the right is the yacht as she slid out of the harbor of Jacksonville, Florida.

## Explanation of Fabrics Used In Interior Designing Given

By HENRYETTA MUMMEY  
"In designing interiors one of the chief problems is getting interesting textures in wall surfaces, fabrics, and woods," said Miss Betty Day, senior in interior design in the department of art and architecture.

"Fabrics, especially, are receiving a great deal of notice, because one of the easiest ways of creating interest in a room is to have a modern, hand-printed textile placed somewhere in that room. It is for this reason that all interior designers must know how fabrics are printed," continued Miss Day.

In a manufacturing plant the blocks are cut in wood, but as this takes more skill than students have time to acquire they cut blocks from linoleum, which prints just as well for the short time they are used.

"The first thing to consider, in making a linoleum print on cloth," said Miss Day, "is the design. It is the unit with which we work and it may be definitely enclosed in a space or may be interlaced in an all-over design."

"The motif used in the design may be realistic, conventionalistic, or geometric, and is worked out on paper usually with a brush since this technique has more of

the character of a print than a pencil sketch.

"After the pattern has been designed it is transferred to another sheet of paper in reverse form and traced onto the linoleum block. Specially designed tools are used for the cutting of the block.

"Then it is ready to be printed. The color is spread on a palette or plate of glass and spread with an ink roller, called a brayer, until it is smooth and of the right consistency. The brayer is also used for spreading a thin coating of the color over the linoleum block, which is immediately placed in position on the fabric to be blocked. Pressure is applied either by means of a mallet or a press, to transfer the design to the cloth," said Miss Day.

"When two or more colors are desired, separate blocks must be made and printed for each color. According to Miss Day, interesting effects can be obtained by printing one color over another.

"One of the chief differences between machine printed and hand printed fabrics," concluded Miss Day, "is the slight unevenness of the color and of the pattern in hand printed cloth. This is one of its main charms, as it gives the fabric an interest which can never be achieved with machine printing."

## Five Students Offer Musical Event Here

### Program Presented in Auditorium

#### Three Soloists and Accompanist Appear in Recital Series Of Spring Term

By J. A. NEWTON  
When musicianship is evidenced in an amateur musician's music, errors which he makes are to be considered lightly.

These remarks are applied to the performance of Helene Robinson, piano student of Mrs. Underwood, who played the last group of numbers on the student recital given by herself and three other student soloists, and one accompanist last night in the music auditorium.

**Emotions Stirred**  
Miss Robinson displayed a tendency to forget, but an ability to interpret musically and to stir, in a measure, the musical emotions of the listener. The latter is a rare thing in players of musical instruments.

Edna Whitmer, who appeared first on the program, played the first movement of a Beethoven sonata, "Sposalisio" by Liszt, and a Prelude by Schutt. Her music

## Scanning the Cinemas

**McDONALD** — "The Cat and the Fiddle," Jeannette McDonald, Ramon Navarro, Frank Morgan. Also "Wharf Angel," Dorothy Dell, Preston Foster, Victor MacLaglen, Alison Skipworth.  
**COLONIAL** — "Palooka," Jimmy "Schnozzle" Durante, Stuart Erwin, Mary Carlisle. Also Ted Healey and Stooges in "Nertzery Rhymes."

By J. A. NEWTON  
**Musicians at Last**  
WHATEVER the very high-brow critics say about the movies, one thing is certain: they've done away with the buxom soprano.

was more academic than inspirational. Her technique was careful, accurate, and precise.

**Clarinet Solos Given**  
Catherine Mishler, in the second group, played "Arabesque" by Schumann, and a Romance and Serenade by Rachmaninoff. Miss Mishler caught the spirit of the serenade rather well.

A new note was added to the student recital last night in more than one sense when Kenneth Asbury, clarinetist, played two solo numbers. The clarinet does not make a good solo instrument, being better adapted to ensemble and orchestral work. Asbury did as well as could be expected under these circumstances.

And one of the most attractive examples of this is Jeannette McDonald.

Miss MacDonald does not confine her singing to the screen. As I recall, she is as popular on the Parisian stage as Maurice Chevalier is with American girls.

Ramon Navarro, also, has gained considerable fame for himself on the concert stage. He toured the continent not long ago. What could be more logical than to cast these two fine singers in the same picture?

This is the case of "The Cat and the Fiddle," which is at the Mac. One of the greatest thrills and one of the pleasantest surprises in a movie for many a day was to see an actor actually playing the piano, instead of flapping his hands over a dummy piano while some musician in the background does the playing. Navarro does it. Not for long, though. Just for a short scene in the beginning of the picture.

Story of a couple of musicians, one a fellow, broke and about to sell his operetta, the other a girl, not so broke who comes to Brussels to study music.

This is the best musical (with the possible exception of Lillian Harvey's shows) since "Forty-second Street."

The manner in which music is handled throughout this picture is a delight to a music-lover. One of the most humorous sequences in

## 33 Coeds Attend Training Meeting Convened by YW

### Two-Day Session of Discussions, Hikes, and Entertainment Held at Coal Springs

With 33 University coeds in attendance, the Y. W. C. A. training conference convened at Coal Springs, near Salem, Saturday, April 7, for a two-day session of discussions, hikes, and entertainment.

Mrs. George P. Winchell of Eugene spoke informally on "What Is Happening in Vienna" Saturday afternoon, after Rosalind Gray, president of the organization, had stated the purpose and objectives of the Y. W. C. A. conference.

John L. Casteel, director of speech, conducted a discussion on "What Is the Task of Religion on the Campus," and Sunday took the negative side to the debate "Resolved: That We Should Go to Seabeck," Mrs. Winchell taking the affirmative.

Other activities which occupied the group were discussions of world fellowship, publicity, and travel. Eula Loomis read the program to be given at Seabeck, while Geraldine Hickson outlined the program for the coming year at the Y. W. C. A. summer camp.

Leaders in morning and evening worship were Helen Binford, Alberta Baldwin, and Alma Lou Herman.

"Patronize Emerald Advertisers."

## Girl Reserve to Pick Leaders of Summer Camps

### Secretary Will See Candidates From 11 to 2:30 Today At Y Bungalow

Grace Lowers, Girl Reserve secretary at Portland, will arrive in Eugene today to interview girls interested in becoming counsellors for the Girl Reserve summer camps. During the hours from 11 to 2:30 o'clock, she will confer with prospects at the Y bungalow. Appointments may be made through Margaret Norton, secretary of the Y. W. C. A.

A camp is to be held for a period of ten days at Camp Meriwether. Features are one and a half miles of ocean frontage, a fresh water lake for swimming, woods, horseback riding, canoeing, and other sports.

The regular camp at Rock Creek, a few miles from Estacada, Oregon, will continue throughout the summer, divided into periods of one or two weeks. Intended for both grade and high school girls, it has proved very interesting in past years.

Counsellorship, which means leadership in some sport or activity, is awarded girls for dramatics, music, nature, boating, and swimming. This counsellorship may extend for one or more of the periods or throughout the summer.

**D. U. Pledges**  
Delta Upsilon announces the pledging of William Rice of Portland.

## Deans of Women Visit Spokane for Conclave

Hazel P. Schwering, dean of women, and Alice B. Macduff, assistant, returned Saturday from the Inland Empire association meeting held in Spokane, April 4, 5, and 6. Dean Schwering was chairman of the convention, at which were representatives from schools of Washington, Montana, Idaho, and Oregon.

After the meeting Mrs. Schwering and Mrs. Macduff visited the campuses of the University of Idaho at Moscow, Washington State college at Pullman, and Whitman college at Walla Walla.

## WESTERN OILS WILL BE EXHIBITED HERE

(Continued from Page One)

U. W. which organization is sponsoring the exhibit, by serving tea during the lectures.

Lance Hart, assistant professor of drawing and painting, will begin the series of lectures on Thursday, April 12, which will be open only to members of the A. A. U. W. and their guests.

The others, however, will be open to the public and are scheduled as follows: Nowland B. Zane, Sunday, April 15, at 3 p. m.; Miss Maude Kerns, associate professor of normal arts, Wednesday, April 18, at 3 p. m.; Andrew Vincent, professor of painting, Tuesday evening, April 24, at 7 p. m. These lectures are to be held on the art gallery of the art building.

A. S. U. O. members will be admitted on presentation of their student cards, a small admission being charged to others wishing to see the exhibit.

**McDONALD**  
12:30 Continuous 11:30  
600 SEATS 15c  
Ends Tonight

**2 MAJOR FEATURES**

Ramon NOVARRO  
Jeannette MACDONALD  
the CAT and the FIDDLE  
—PLUS—  
Wharf Angel  
VICTOR MCLAGLEN  
DOROTHY DELL  
PRESTON FOSTER  
ALISON SKIPWORTH

Starts Wednesday

**GEORGE RAFT**  
**Bolero**  
CAROLE LOMBARD  
SALLY RAND  
FRANCES DRAKE

## Your White Flannels Won't Shrink

the way we clean them.

**Electric Cleaners**  
Phone 300

**LUCKY STRIKE CIGARETTES**

LUCKIES ARE ALL-WAYS KIND TO YOUR THROAT

"It's toasted"

✓ Luckies are all-ways kind to your throat

Only the Center Leaves—these are the Mildest Leaves

NOT the top leaves—they're under-developed—they are harsh!

NOT the bottom leaves—they're inferior in quality—coarse and sandy!

They taste better