

# Women's and Society Page of the Oregon Emerald

JESSIE STEELE, Editor

ESTHER HAYDEN, Society Editor

## Social Activity Lags At Pre-Easter Time

The campus calendar was quite vacant this week-end, with no campus dances being scheduled for Friday evening because of Good Friday. On Saturday evening two dances will be held, the Sophomore Whiskerino Shuffle at the Campa Shoppe and the Pan-Hellenic dance to be held at the Delta Zeta house.

The Pan-Hellenic dance will be an informal affair given for old and new Pan-Hellenic representatives of the women's living organizations and their guests. Jane Cook heads the committee in charge.

## Panhellenic Projects

By BETTY OHLEMILLER

Editor's note: This is a continuation of the series begun last term on philanthropic projects of sororities.

### Beta Phi Alpha

The realization that many of their own members needed financial assistance in order to complete their college careers caused Beta Phi Alpha to use their Memorium fund, established in memory of Mary Gordon Holway, counsellor of early Beta Phi Alpha. Originally it was to be used to aid any deserving college woman, but now is available only to members.

Through gifts from the chapters, alumnae associations, and individuals this fund increases. As soon as it has assumed the necessary proportions to fill more than requests from members, the fraternity will extend the loan to non-members as well.

### Chi Omega

The alumnae of Psi Alpha chapter of Chi Omega on this campus are the donors of the cup which is given annually to the house which has the highest scholarship rating in the University.

In commemoration of the place of its founding, national Chi Omega erected a Greek theatre on the University of Arkansas campus in Fayetteville, Arkansas.

Dr. Florence Salin last year received the Chi Omega achievement award, presented by the fraternity to the woman who has done the most outstanding work in her field.

Maintaining a service fund in order to carry out various projects, Chi Omega is at present sponsoring a study of "Women and Health" at Chicago, and "Chapter House Management" at Columbia university. On each campus where a chapter is located, a prize is given by that chapter to the outstanding student in sociology.

## Two-tone Oxfords Attract Shoppers At Graham's Store

By CYNTHIA LILJEQVIST  
Although spring is playing her usual little joke on us by making the heavens frown and causing our new spring clothes to remain disconsolately in the closets, we can still ruminate on how to be well shod or what to wear to the coming Mortar Board ball.

Seen at Graham's—a new shipment of campus sport oxfords popularly priced at \$5.00. Made of white elk with the desirable plain toe finish, they are swagger yet trim and just the thing to "round off" your sport outfit. Another attractive feature is the brown or black saddle.

And then there was the poor little girl who stood and gazed longingly into the big store window at the dresses. This is exactly what happened the other day. The store was H. Gordon's. The dress was a woman's idea of a perfect spring... yellow with a subdued brown plaid... evidently the purpose of the designer was to revive the charm of the '90's. Exaggerated sleeves and a brown taffeta bow covering most of the back. Sad but somebody got it.

The dress of mouslin de soi heralds, a new trend in spring fabrics. Do we dare say without insulting the dress you just bought that sleeves are becoming larger and rounder and losing that puffy appearance. Yellows, aquatonnes, plaids, and checks are all supposed to be good but again it all depends on your definition of good.

And since our Paris dispatch failed to arrive we must necessarily close with:  
"Costly thy habit as purse can buy.

But not expressed in fancy; rich, not gaudy;  
For the apparel oft proclaims the man."

## EDUCATION TO BE SUBJECT OF STEFFENS' TALK

(Continued from Page One)  
with a greater knowledge of human weakness in public life, our social system is bound to undergo a growth for betterment.

## Plan Ball



From left to right, first row: Ellen Sersanos, Betty Ann Macduff. Second row: Louise Webber, Marian Chapman, Aimee Sten is also on the committee for the annual Mortar Board ball scheduled for April 22.

campus and is a member of Delta Gamma. Mr. Rogers is a graduate student and is affiliated with Phi Delta Theta. The wedding will be an event of next fall.

## Betrothal Announced

Large parchment sailboats, and individual sailboat place-cards decorated the table at the Phi Mu house last Thursday evening when the betrothal of Miss Mildred Carson to George Wallis Ohler was announced. Miss Carson attended the University and was affiliated with Phi Mu. Mr. Ohler also attended the University and was a member of Pi Kappa Alpha.

## Graduate Visits

Ronello Lewis, who was graduated from the University in '31 and took graduate work in '32, visited the campus yesterday. Working as an accountant in Kansas City, he is here on a short vacation.

## Mortar Board Ball Tickets on Sale at Houses

Dispensers of Twenty to Get One Free for Annual Event April 22

Every woman who sells 20 tickets to the Mortar Board ball, which will climax Senior Leap week on Saturday evening, April 22, will receive a free ticket to the dance, Aimee Sten, in charge of tickets, announced yesterday.

Tickets were put on sale at women's living organizations yesterday, where they may be obtained from the various house representatives, Miss Sten reported. The pasteboards are \$1 each, which includes the government tax of 10 per cent. Mortar Board ordered less tickets this year than were sold last year, so that the Eugene hotel will not be too crowded.

Tickets will be sold at the Cop on Thursday afternoon, April 20, and all day Friday, April 21, where they may be obtained by those not living in the halls and sororities. Helen Garrison, president of Tongues, Eugene University girls club, is in charge of the sale there. No tickets will be sold at the hotel, Miss Sten emphasized.

## Phi Delta Phi Chooses Davidson as Magister

At a meeting of Phi Delta Phi, national law honorary, held Monday evening new officers were elected for the ensuing year. It was announced yesterday by Otto Frohnmayer, retiring head.

The following officers were elected: Carl Davidson, magister; Karl Huston, reporter; Carl Cond. clerk; John Long, historian; James Landye, tribune; and Arthur Ireland, gladiator.

## Shoulders Go Airplane



Here's Peggy Hopkins Joyce displaying airplane shoulders—not her own, of course, but the coat's, which is a fitted beige wool affair with the sleeves forming large flaring tucks. She wears a frock of brown wool and a scarf and a hat of brown and white polka dots.

## Exchange Affairs Of Campus Groups Fill Social Calendar

Exchange dinners and desserts were numerous during the week, despite the counter-attraction offered Wednesday evening by the Order of the "O" smoker. On Tuesday evening, Delta Delta Delta entertained for members of the faculty; on Wednesday evening Delta Gamma entertained honoring Mrs. Schwering; Phi Sigma Kappa for Kappa Alpha Theta; Sigma Kappa for Sigma Alpha Epsilon; Alpha Omicron Pi for Phi Kappa Psi; Kappa Kappa Gamma for Kappa Sigma; Pi Eta Phi for Phi Delta Theta, and Chi Omega for Phi Gamma Delta.

Thursday is, as usual, the most popular night for exchange dinners with the following listed: Alpha Xi Delta for Sigma Alpha Epsilon; Kappa Alpha Theta for Phi Delta Theta; Alpha Chi Omega for Sigma Pi Tau; Alpha Gamma Delta for Phi Gamma Delta; Alpha Tau Omega for Kappa Kappa Gamma; Beta Theta Pi for Pi Beta Phi; Delta Tau Delta underclassmen for personal guests; Phi Kappa Psi for Alpha Phi; Delta Zeta for Sigma Chi; Zeta Tau Alpha for Sigma Phi Epsilon; and Theta Chi for Delta Gamma.

## Steffens Will Lecture At Socialist's Meeting

Lincoln Steffens, noted journalist and writer, will talk at a meeting being sponsored by the Student Socialist club at 4 o'clock Friday afternoon in Alumni hall.

The meeting is open to all students and faculty members and will take the form of a discussion period in which questions will be asked Mr. Steffens. This is one of a series of such meetings being sponsored by the Student Socialist group.

## Easter Occasion For Celebration By Three Houses

THIS Easter Sunday will see three fraternities giving annual celebrations, Phi Gamma Delta, Sigma Alpha Epsilon, and Theta Chi. The Fiji breakfast, which in the past has been one of the social highlights of spring term, will be given in Portland this year by the alumni of the chapter.

Members of Sigma Alpha Epsilon and their dates will be entertained with an Easter tea given at the chapter house by the Eugene Mothers' club of the fraternity. Theta Chi chapters of Oregon State and the University will combine to commemorate the date of their founding with a banquet held at the local chapter.

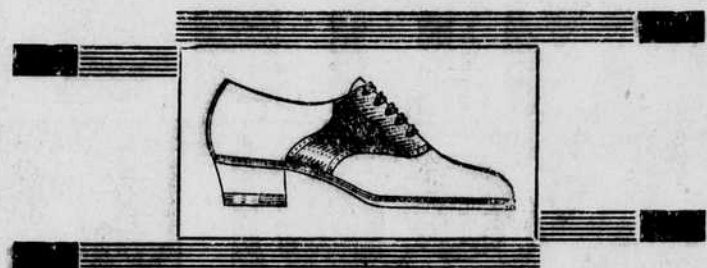
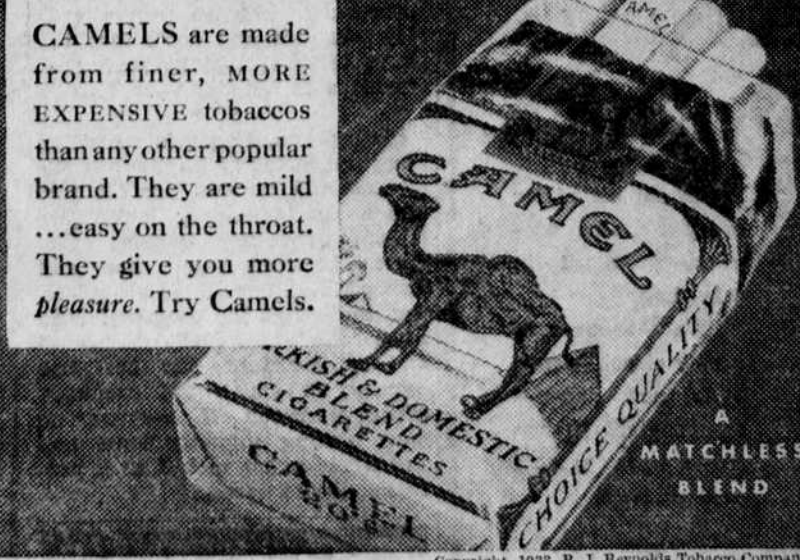
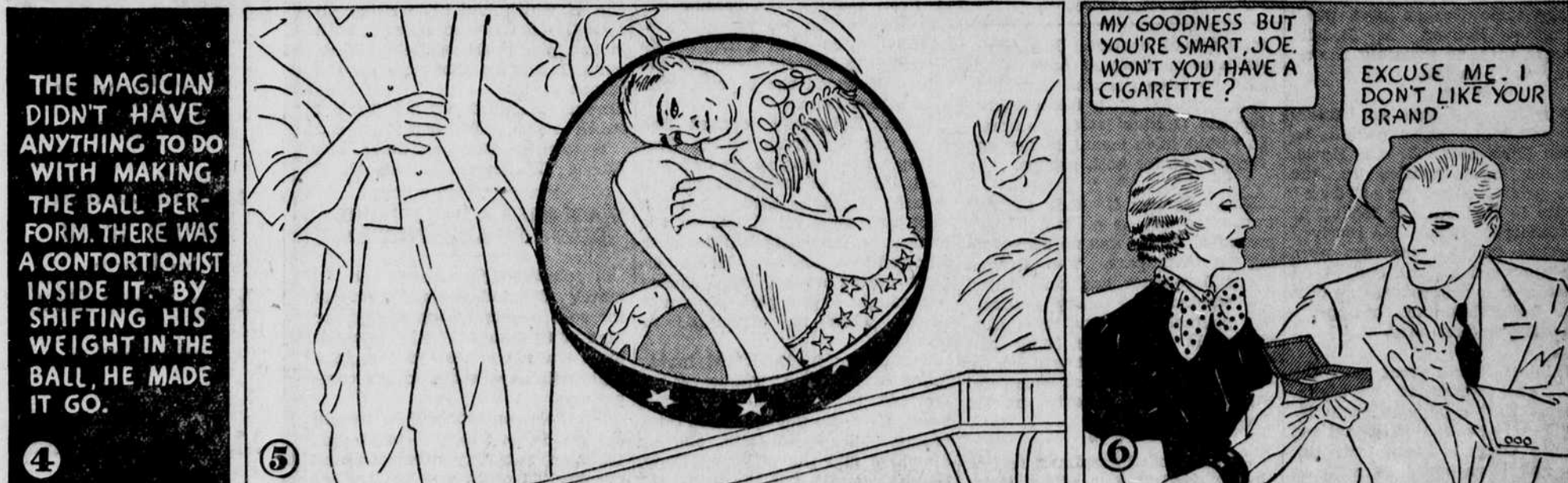
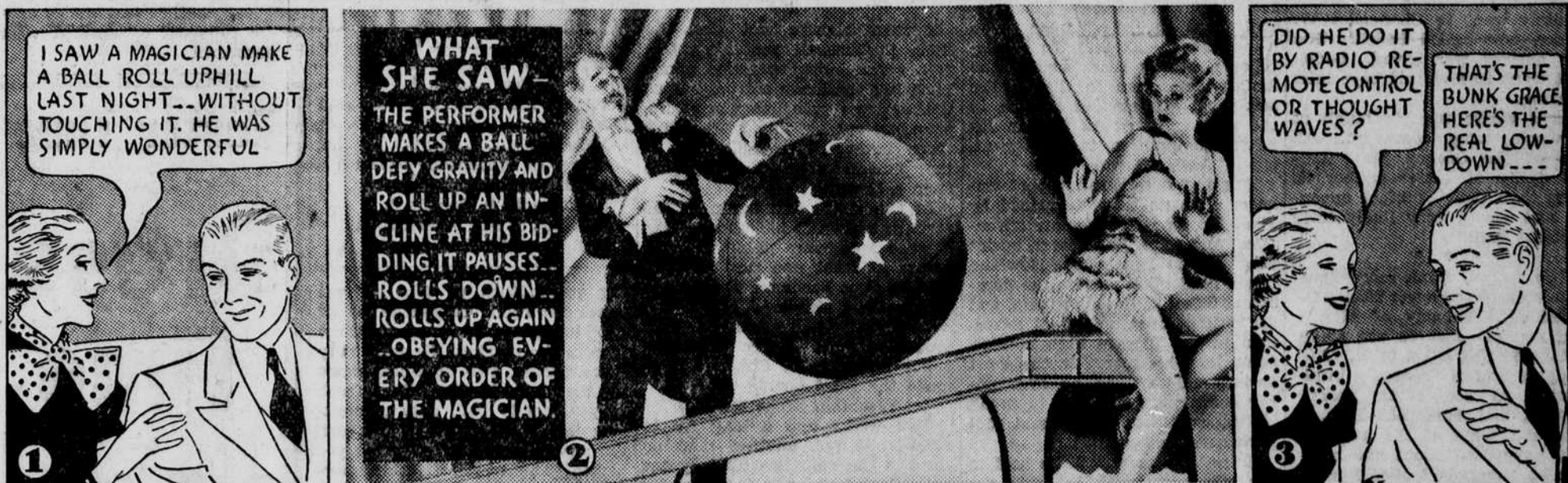
## Two Couples Make Known Betrothals

Two engagement announcements were made during the spring holidays which will be of interest to students on the campus. The first was the announcement of the betrothal of Miss Beryl Bernitt to Ira Brown. Both attended the University, where Miss Bernitt was affiliated with Chi Omega and Mr. Brown with Sigma Nu.

The other engagement announcement, preceding a spring wedding, was that of Miss Francesca Prideau and Harry Coleman. Miss Prideau attended the University and was affiliated with Alpha Phi. Mr. Coleman has been a student at Stanford and the Harvard law college.

# It's Fun to be Fooled..

## TODAY'S SHOW MYSTERIOUS BALL ROLLS UPHILL



# Smart

Campus Sport Oxfords

The ideal spring time footwear for the college girl: white elk, plain toe oxfords, with brown or black saddles. Buy these sport shoes early for a long season's general service.

# GRAHAM'S

FOOTWEAR  
WILLAMETTE STREET 828  
"Where College Folk Buy Footwear"

## and Now ...



- Fresh Strawberry Sundae
- or
- Jumbo Ice Cream Soda
- and
- Delicious Fresh Strawberry Toast

# No tricks — just costlier tobaccos in Camels