

## WHAT SHOW TONIGHT?

Colonial — Maurice Chevalier in "Playboy of Paris."  
 Heilig — Virgil Mulkey, the magician. Feature picture.  
 McDonald — Will Rogers in "Connecticut Yankee."  
 State — Edmund Lowe in "Good Intentions."  
 Workshop Theatre (13th and Ferry) — "Ten Nights in a Barroom." Campus cast. Curtain at 8:15 p. m.

### Virgil Mulkey at Heilig

Virgil Mulkey, Eugene boy, graduate of the University, one-time star of Guild hall productions, known as one of the cleverest magicians in the country today, is opening a three-day Heilig engagement today.

Accompanying him are all the people and accoutrements necessary to put on a full stage show that compares favorably with those of the late Houdini. The Heilig is showing a new cinema each day, along with the complete change in acts Virgil shows during his engagement.

### Will Rogers Film Hilarious

A lot more hilarious anachronisms than were ever intended or dreamed by Mark Twain, are included in Will Rogers' version of "A Connecticut Yankee in King Arthur's Court," now showing at the McDonald. However, all the Rogers innovations would surely have received the whole hearted approval of Twain. How, for instance, was Twain to foresee the comic value of a whole fleet of Austins rushing to the rescue of the Yankee, or the auto-gyro that drops bombs, or the amazing qualities of a magic cigarette lighter? In the cast besides Rogers are William Farnum, Myrna Loy, Maurice O'Sullivan, and thousands of extras. Sets of Arthurian castles are remarkably good.

### Chevalier Show Closes Today

Today is your last chance to see Maurice Chevalier, French songster, in his latest musical comedy, "Playboy of Paris."

Dealing with the adventures of a gay blood of Paris the cast includes Eugene Palette and Stuart Irwin, two of the funniest boys in Hollywood, who do their stuff to absolute perfection.

## DeNeffe's

## Joe Hughes

Voted the winner in the best dressed man contest, wears

## DeNeffe's Clothes

Our clothing carries a style and individuality that bring a prompt response from the COLLEGE MAN, who is quick to recognize that there's a difference in clothes. HUNDREDS OF OREGON MEN vote for clothing every year. THERE'S A REASON. Learn why by buying your next suit from

## DeNeffe's

MEN'S DRESS WEAR



John Gilbert is the star of Friday's Colonial feature, "Way for a Sailor."

## Comedy Chosen Feature Picture For 'Band Bust'

## Five Vaudeville Acts Lined Up for Saturday Night Show

With the feature picture "Follow the Leader" starring the famous Ed Wynn, and five vaudeville acts lined up in addition to the band itself, the first annual "band bust" at the Colonial Saturday night now promises to be the outstanding attraction of its kind of the year, it is declared by Carson Mathews, in charge of the event.

### Tickets Now on Sale

Tickets will go on sale today at the Co-op and Colonial theater, and a representative will have a quota in each house and hall on the campus. Only 500 seats are available and an early purchase is advised.

The "band bust" will start promptly at 11 p. m., and will close at 12:50, leaving 10 minutes to get home under the late permission of 1 o'clock granted for the event.

### Movie Is Comedy

The feature, "Follow the Leader," is one of the funniest comedies that has been produced. It is sheer nonsense for the most part, with the king of comedy, Ed Wynn, as leader. Besides Ed Wynn, the cast includes Ginger Rogers, Stanley Smith, Lou Holtz, and a number of others.

Vaudeville features will include a screen song, "Virgil" Mulkey, nationally known magician, the Oregon Rhythm Boys, a mystery tap dancer, and others. Kelsey Slocum, yell leader and member of the Oregon Rhythm Boys trio, will be master of ceremonies.

## Pi Lambda Theta Initiates Women To Membership

## Kathryn Fry Is Re-elected President for Year Of Education Club

Initiation of new members, election of officers, and a banquet were the highlights of the meeting held yesterday by Pi Lambda Theta, national education honorary for women.

One associate and seven active members were formally taken into the chapter at the home of Mrs. Henry D. Sheldon. Those initiated were: Mrs. Audrey May, associate member; Dorothy Ball, Helen Chaney, Oma Belle Emmons, Inga Goplerud, Roma Gross, Alice Spurgin, and Celia Thoma, active members.

After the initiation ceremony the old and new members gathered at the Anchorage for a banquet and election of officers.

Those who will head the group next year are: Kathryn Fry, president; Ella Carrick, vice-president; Vida Buehler, treasurer; Gladys Haskin, recording secretary; Roma Gross, corresponding secretary; and Thelma Lund, keeper of records.

This will be the second year as president for Miss Fry, who headed the organization during the past year.

## DIRECTORATE NAMED FOR CAMPUS LUNCH

(Continued from Page One)

of serving, which will consist of the placing of tables and food, while Maryellen Bradford will have charge of the service, which will be done by the old and new members of Kwama, sophomore service honorary. Cafeteria style will be used as in former years.

Tom Moran, in charge of grounds, will prepare the campus lawns for the luncheon and place signs on the campus. Carl Gerlinger is in charge of clean-up. Sub-committees for all the committees will be announced later.

The menu this year, according to Miss Haberlach, will consist of fruit salad, meat loaf, potato chips, rolls and butter, olives, Dixies, Hershey bars, and punch. The estimated cost of the food is \$900. Approximately 3000 people are expected, since this is the first Junior Week-end event, and there will be many mothers and visitors on the campus.

"All living organizations are asked not to serve luncheon on Friday," Miss Haberlach said today. "I want it made clear that everyone is entitled to come to the luncheon, since all the students have paid for it on their fees."

The beauty parade, flivver race, and tennis court dance will directly follow the campus luncheon on Friday afternoon.

## Despite Raging Gale, Annual AWS Auction Brings in \$32

Amid cries of "Did you save that psych book for me?—Let's have a look at the yellow slicker—two bits for the blue beret"—and in spite of a driving sand and wind storm that threatened to blow customers and merchandise off the library steps, the Associated Women Students managed to add \$32 yesterday to their budget for the ensuing year.

"How much am I offered for the genuine \$7.50 Sheaffer's fountain pen, ladies and gentlemen? One dollar—one dollar and seventy-five cents—Going—Going—Gone! The pen is yours." "Step right up and examine the fine tweed overcoat—cast your eyes on the striking printed silk scarfs on your left—Who wants the modish spring hat? You can't afford to be with-

out this untouched English poetry book, and my friends here is a Lit Survey volume that has never been opened. Gloves in every color and size—Buy your Christmas presents early—Treat the wife and children."

One poor little girl had to pay 50 cents to recover her own blue umbrella lost last year. And then there was the boy who purchased an English topcoat worth at least \$35 for the small sum of \$3.50. A journalism major purchased two pens and an eversharp pencil for one dollar and thirty cents.

"Haba Haba Haba, right this way—only a few articles remaining—reduced prices—" Freeman Young's voice competed well with the clamoring crowd and the raging gale.

## Joint College Women's Play Day To Be May 2

The annual College Women's play day, held jointly between Oregon State college and the University of Oregon, has been scheduled for May 2 on the Oregon State campus, with Juanita Young in charge of the arrangements on this campus.

A bus will be chartered to convey the participants from Oregon over to Corvallis, leaving at 8 o'clock and returning at 5 in the afternoon. The sports to be entered in will be baseball, tennis, archery, hockey, and basketball. Some of the activities will be given in the morning and others in the afternoon, so that one girl may play in two sports.

A list will be posted on the main bulletin board of the women's gym where everyone wishing to go to the Play Day may sign up, and another list for the various sports in which they wish to compete. Each girl will be required to bring her own gym suit. O. S. C. will furnish a noon lunch by the river with stunts for entertainment. Mary Wilburn is in charge of the local stunt.

## TARIFFS IN DEPRESSION, SAYS PORTLAND TRADER

(Continued from Page One)

nett told how a cargo could be shipped by water from Antwerp to Portland cheaper than the same cargo could be shipped from San Francisco to Seattle.

To those who are interested in taking up foreign trade work for an occupation, Mr. Barnett advised that they take all the business administration and courses relating to foreign trade as possible. "Foreign trade," he said, "is a field that is far from overcrowded, and with the world as large as it is it will be a long, long time before it is overdone. Foreign trade is opening up new fields day after day, which means a chance for those who are ambitious of learning the business."

Mr. Barnett is a former student of the University, dropping out of school in 1917 to join the army and see active service in France. The John G. Barnett company, Inc., is a result of eight years of intensive work by Mr. Barnett. It is now one of the leading export and import houses on the Pacific coast.

He has always been ambitious. When he was 16 years old and a student in high school, he opened up a Ford agency which he kept until the time he dropped out of school.

## Dr. Rebec To Address Presbyterian Banquet

Dr. George Rebec, dean of the graduate school, will address the annual banquet of the First Presbyterian church in Portland this evening.

He will confer with graduate students Friday morning.

## Dr. F. S. Dunn To Speak At Classics Convention

Appearing as one of the four speakers before the American Classical league will be the honor for Prof. Frederic S. Dunn, head of the Latin department, when the National Education association convenes June 30 at the University of Southern California.

The invitation to take part in the program of the league, which is a division of the National Education association, was recently received by Professor Dunn from Ralph V. D. Magoffin of New York university, who is president of the American Classical league.

"From Temple Pediment to Cathedral Campus" is the title of the paper which he is preparing on the similarity of subject matter found in pagan culture to that found later in Christianity.

For a number of years Professor Dunn has attended the national conclave, representing the Northwest from the regional committee.

## Treasure Hunt Hike Planned for Saturday

A mystery hike, under Mae Masterton's leadership, has been scheduled for this Saturday, leaving the Gerlinger building at 1 o'clock on Saturday afternoon and traveling up to the three cabins beyond Hendricks park, a distance of about six miles.

Each girl will be required to bring a plain Hershey bar and five cents. The hike will be held along the same lines as a treasure hunt, however, the motif is being kept secret. Any girl on the campus who is interested in walking is invited to turn out for this hike.

Records of hiking, taken from fall and winter terms, show that 53 girls have gone on one or more hikes. Many of these girls have hiked more than a hundred miles. The listing of the exact amount of miles covered will be given later, according to Ella Redkey, hiking manager.

## ROUTE OF DUST CLOUD BRING'S DISAGREEMENT

(Continued from Page One)

was so heavy one couldn't go outside without holding a wet handkerchief over the mouth," Dr. Smith concluded.

Let Dr. Hodge take the stand. "When I arose this morning and looked out of the window to the east," he began, "I saw a grayish cloud just this side of the Cascade mountains. At first I thought it was fog, but I noticed a cloud above it that was azure blue in color, so that I realized the grayish cloud was dust."

"Being an eye-witness to the scene, I am quite certain that the dust came over the mountains directly east of here. Collecting some of the dust on a glass slide placed outside a window, I placed it under a microscope, the test proving that it was volcanic dust from Eastern Oregon."

## Phi Beta Music, Drama Program Will Be Tonight

## Eight Selections and Play Scheduled on Benefit For Study Fund

Tonight at 8 o'clock Phi Beta, national music and drama honorary, will present a program at the Music building for the purpose of adding money to the Phi Beta scholarship fund.

The program will consist of eight musical numbers and a one-act play, "The Stolen Prince," by Dan Toheroh, coached by Norma Jacobs. The play is an attempt to suggest the unusual manners and conventions of the oriental theatre as represented in China.

The music program includes numbers by the Phi Beta string quartet, composed of Frances Brockman, Mabel McKinney, Roma Gross, and Estelle Johnson; and solo numbers by Helen Robinson, Theresa Kelley, Robert Spicer, Marguerite Spath, Pauline Brigham, Maude Stehn, Miss Spath, and Miss Johnson.

Musical selections will be featured from Tchaikowsky, Chopin, Coleridge Taylor, Strauss, Saint-Saens, and many others.

The second part of the program will be devoted to the Chinese play. Those taking part are Elizabeth Scruggs, Eleanor Lewis, Lucille Kraus, Jean Williams, Dorothy Esch, Louise Weber, Marian Camp, Helen Melke, Norma Jacobs, Jean Aken, Constance McKenzie, and Ruth Bryant.

Helene Robinson and Francis Brockman hold the Phi Beta scholarships. Admission to the recital will be 25 cents.

Tickets will be on sale all day at the Co-op.

## Trade Honorary Holds Dinner and Initiation

An informal dinner was held at the Osburn hotel last night by Pan Xenia, foreign trade honorary, in honor of J. H. Barnett of Barnett and Co., importers of Portland.

Three pledges of Pan Xenia, Thurston Shell, Henry Levoff, and Walter Williams were initiated into the honorary.

After the dinner, Mr. Barnett led an informal discussion in relation to such matters as the tariff, the economic depression, and the future of foreign trade.

## Phi Delta Kappa Holds First Initiation Today

The first initiation of the year for Phi Delta Kappa, national education honorary for men, will be held this afternoon at 4 o'clock when eight new members will be taken into the chapter.

The ceremonies will be held in the men's lounge of Gerlinger building, followed by a banquet at

the Anchorage. Dean Sheldon will be the speaker for the occasion. Arrangements for initiating the largest group ever taken in during a regular school session are in charge of Irving Mather, who is vice-president of the group.

### Drives to Portland

Jeannette Calkins, alumni secretary of the University, drove to Portland yesterday on business. She returned the same evening.

## Maiden Form Brassieres

Featured by

"Eugene's Own Store"

## McMorran & Washburne

PHONE 2700



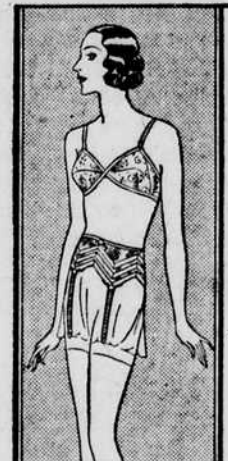
FOR THE NEW SPRING STYLES..

Maiden Form

FOUNDATIONS

OF COURSE!

A double support uplift with slenderizing diaphragm band and extra inner pockets—in satin, crepe de chine, jersey, net and lace. Princess girdle of satin and lace. . . .



They fit smoothly, mould gently, and weigh almost nothing. These exquisite Maiden Form foundations deftly accent your slender figure curves as the new styles demand—and because of their scientifically correct design, Maiden Form garments will guard for the future the buoyant figure charm that is yours today.

MAIDEN FORM BRASSIERE CO., Inc., 245 Fifth Ave., N.Y.

The Maiden Form BRASSIERE

GIRDLES • GARTER BELTS

Maiden Form has a host of imitators. Accept no substitutes. Insist on the genuine Maiden Form label.

## Co-Eds



## Senior Leap Week

Gerninias for Boutonnieres

Fixed Right Delivered Right Priced Right from

the UNIVERSITY ... FLORIST

PHONE 654 598 13th Ave. East Three blocks west of campus

## BEARD'S

856 WILLAMETTE

PHONE 1996

## Big Mid Season SALE

Coats—Dresses—Suits—Silks—Hosiery

The Greatest Bargain Event of the Spring Season!

BEGINS THURSDAY A. M. AT 9 O'CLOCK

READ—Just as you are about to buy your spring apparel we offer

## 200 SILK DRESSES

\$12.75 to \$19.75 Values

At \$9.75

Many never shown before! In all your shopping travels we know you have never found values like these. The styles, the colors, the materials and the price will make you want three or four dresses . . . frocks for afternoon, evening, street, and business wear. Beautiful print in fine silk crepes and chiffons—shantung, georgette and plain crepes. And there are sizes 14 to 46.

150 PAIRS OF Kayser and Phoenix

\$1.50 and \$1.95

Quality Full Fashioned

SILK HOSE

\$1.29 Pair

2 Pairs \$2.50

Beautiful high twist dull finished, extra fine gauge silk hose. Every pair perfect. New spring shades.

### LARGE GROUP

## Spring Hats

Specially priced for our Mid-Season Sale. Regular values in group to \$7.50—

\$3.95

Tailored styles and dressy styles in new straws and braids—stunning hats from some of the best makers. Black, navy, natural, red, green, and other shades.

## Drive Your Self

In one of Taylor's own cars.

It is not always possible to buy a car—but it is always convenient to rent one.

## Taylor's Garage

857 Pearl

## Wade Bros.

WE GIVE S & H GREEN STAMPS