

# Oregon Emerald

University of Oregon, Eugene

RAY NASH, Editor MILTON GEORGE, Manager

**EDITORIAL BOARD**  
 Managing Editor Walter Coover — Associate Editor  
 Carl Gregory — Sports Editor  
 P. I. P. Editor Donald Johnston — Feature Editor  
 Literary Editor Elizabeth Schultze — Society Editor  
 News and Editor Phones, 686

**DAY EDITORS:** William Schulze, Mary McLean, Frances Cherry, Marian Sten, Dorothy Baker, Miriam Shepard.

**NIGHT EDITORS:** J. Lynn Wykoff, chief; Lawrence Mitchelmore, Myron Griffin, Rex Tussing, Ralph David, Floyd Horn, Joe Rice.

**ASSISTANT NIGHT EDITORS:** Mil Froehomme, Warren Tinker, Joe Freck, Glenn Gail, Harold Bailey, Harold Kester, Charles Barr, Wilfred Brown, Thomas Mumfrey.

**SPORTS STAFF:** Harry Dutton, Chalmers Nooe, Chandler Brown, Warren Tinker, Scott Milligan, Cecil Snyder.

**FEATURE STAFF:** Florence Hurley, John Butler, Clarence Craw, Charlotte Kiefer.

**THEATER NEWS:** William Schulze, John Caldwell.

**UPPER NEWS STAFF:** Amos Burg, Ruth Hansen, La Wanda Fenlason, William Hagerly.

**NEWS STAFF:** Grace Taylor, Elise Schroeder, Maryhelen Koupal, Josephine Stofel, Thirza Anderson, Etha Jeanne Clark, Mary Frances Dillard, Elaine Crawford, Audrey Henriksen, Phyllis Van Kimmel, Margaret Tucker, Gladys Blake, Ruth Craeger, Leonard Dolano, Chrysal Orday, Margaret Reid, Glenn Heacock, Irene Urfer, Joe Rice, Leonard Hagstrom, Alice Gorman, Evelyn Shaner, Floyd Horn, Thirza Anderson, Lawrence Mitchelmore, T. Neil Taylor, Betty Hagen.

**BUSINESS STAFF**

**LARRY THEILEN**—Associate Manager

Advertising Manager Bill Bates — Foreign Adv. Mgr. Bill Hammond — Ass't. Advertising Mgr. Wilbur Shannon — Ass't. Circulation Mgr. Charles Reed — Ass't. Advertising Mgr. Ray Dudley — Assistant Circulator

Ed. Biesel — Circulation Manager Frederica Warren — Circulation Assistant

**ADVERTISING SALESMEN**—H. Day Foster, Richard Horn, Harold Kester, Ray Smick, John Caldwell, Kenneth Moore, Eugene Laird, Margaret Underwood, Ina Tremblay.

**FINANCE ADMINISTRATOR**—George Weber.

**ADVERTISING ASSISTANTS**—Harold Bailey, Herb King, Ralph Millsap.

**OFFICE ADMINISTRATION**—Lova Buchanan, Margaret Poorman, Dorothy Davidson, Helen Katzenbrink, Pauline Prigmore, Elizabeth McCord.

The Oregon Daily Emerald, official publication of the Associated Students of the University of Oregon, Eugene, issued daily except Sunday and Monday during the college year. Member, United Press News Service. Member of Pacific Intercollegiate Press. Entered in the postoffice at Eugene, Oregon, as second-class matter. Subscription rates, \$2.50 per year. Advertising rates upon application. Residence phone, editor, 721; manager, 2759. Business office phone, 1895.

Day Editor This Issue—Dorothy Baker,  
 Night Editor This Issue—Joe Rice,  
 Assistant Night Editor—Wilfred Brown,  
 Charles Barr

WEDNESDAY, MAY 9, 1928

## Untried Authority Given Expert Guidance

ORDER OF THE O men embarrassed the prophets yesterday by generally according in a resolution to make tennis a peer along with basketball, track, baseball, and even mighty football. The lettermen's generous support gives still more impetus to the movement afoot to do away, as much as can be, with the purely arbitrary discriminations between sports.

At the polls last week, students sanctioned the new dispensation by striking the rigid requirements for awards out of the by-laws and placing the student policy governing such matters at the discretion of student and executive council members. Today's is the first opportunity for the new authorities to decide or the admission of a minor sport to first rank.

The reception of tennis among the elite of sport society here has ramifications rooted far from the whimsical distinction which four extra inches of blue worsted fenced in by yellow brings to the wearer. It goes to show that crowned heads in sports are no diviner than the ones in politics; all rise and fall with the popular enthusiasm they are able to elicit, no matter how well fixed in tradition they may be.

The Order of the O, in yesterday's bow to tennis, foreshadowed the day when the equal hegemony of sports will come to pass. It will not be next year, nor yet the year after, but the most advanced physical educationalists and coaches—such men as William J. Reinhardt and Delbert Oberteuffer of our own department—look forward to an ultimate normal relationship between an individual and his peculiar fitness for an activity.

They are right. What other criterion than the skill of a player and the effort he puts out can be counted in appraising his service to alma mater? For example, can we hold that, because football is spectacular, everyone who lacks the particular coordination which qualifies a star gridster is ruled out of his share of glory and physical benefit in sports? The Emerald would be overjoyed to see any kind of intercollegiate competition—golf to horseshoes—recognized with a yellow O just 8x7x1 1/2. But in the meantime, a measure awaits the action of the new authorities today. The thinking sponsors of Oregon athletics, the members of the Order of the O, and even the student

body, in a tacit way, have ratified the inauguration of tennis as a major sport. This makes it easy for the student and executive councils to pass.

## The Marble Opportunity

THE committee on the senior class memorial has recommended that the class use its surplus funds to provide a marble base for a statue of the late Prince L. Campbell.

During the more than a quarter century that Prince L. Campbell was at the head of the University of Oregon, he performed a great and lasting service to the state of Oregon and its citizens. It is due to his industry, his unflagging zeal and devotion to the cause of higher education in Oregon that this university has grown from the status of a fledgling college to that of a well-established and widely recognized institution of merit.

It has truly been said of President Campbell that he gave his life for the University of Oregon. Faculty members and the few students still on the campus who heard him speak in the Woman's building in May, 1924, will probably never forget the occasion. Only recently out of the hospital and yet feeble from a lingering illness, he was assisted to a large wicker chair near the edge of the stage. Remaining seated and well wrapped in robes, he delivered the address which opened the campus drive for the Greater Oregon of his dreams. The effects of the illness were apparent in his voice but not in the wording of his plea. Brief and clear, Prince L. Campbell made every word count in his last public appearance.

Mr. and Mrs. A. Phimister Proctor, long close friends of Mr. Campbell, are giving the statue, which is to stand in the court of the proposed fine arts museum. Mr. Proctor, noted sculptor of the Pioneer, of the Circuit Rider, at Salem, of the equestrian statue of Theodore Roosevelt, in Portland, and many other fine works of art, will himself execute the work.

The class of 1928, the last class to attend the University during President Campbell's lifetime, has a real opportunity to leave behind something of permanence and fitting sentiment, sharing in a splendid tribute to one whose deeds have left an irradicable imprint on the University of Oregon. —W. C.



## THE STATE PENITENTIARY, LIKE THE UNIVERSITY, HAS INCREASED ITS DORMITORY ACCOMMODATIONS.

There's more similarity than that. You stay until you die or your sentence is up.

Here's another one we heard on the poor Scotchman. Instead of buying shoes, he found a pair of "spats" and had them half-soled.



"Give me a sentence using the word guitar."  
 "Don't walk where they fixed the street, or you'll guitar all over your shoes."

## THERE ARE ONLY TWO THINGS WRONG WITH A PROFESSOR'S TRAIN OF THOUGHT—THERE ARE SO MANY EMPTY CARS AND IT TAKES SO LONG FOR THE CABOOSE TO ARRIVE.

## ODD FLOAT TAKES PRIZE IN EASTERN CANOE FETE

WINSTON LAKE, N. Y., May 8, 1928 — (By K.P.)—First prize for the most out-of-the-way float entered in the University's annual Canoe Fete held annually on Winston Lake, was awarded Chi Psi fraternity by the judges here this morning. The float carried nothing but a man sitting at a table piled high with books.



Photo by Kenny 'n Alice TASMANIAN AMPHIBIAN TO CRAWL ON MUD

## Above Photo Shows Intimate Pose Of Colossal Float

One of the most conspicuous floats to be entered in the Canoe Fete Friday night at the University of Oregon will be the gigantic Tasmanian dragon. It will be a submarine effect with no part of the dragon exposed.

Spectators will be able to detect its presence by the surface ripples. A large amount of money has been spent on decorations and it is hoped by this invisible effect that people will never tire of not seeing it and that it can be used for many years.

Bernice Razor was nominated for class barber at a meeting of the class of '29 yesterday afternoon. It took a sharp-witted man to think of that.

## TODAY'S DIRECTORY ANSWER

"Let's not play cards any more."  
 "Oh, your Luckel change."



This photograph shows Horace Afterglow, college student in the East, who is creating such a stir by bringing a libel suit against his college paper for accidentally printing his name under a list of students elected to Phi Beta Kappa.

Released from pledge Is Adoree McDougal; When she blew her nose Folks thought it a bugle.

LIFE'S LITTLE TRAGEDIES Alexander ("Sees All, Knows All") arrives at the theater late because he is unable to locate his hat.

CHEER UP! WE HAVEN'T A GREEN SWEATER EITHER.

SEVEN SEERS

## Bulletins

Scabbard and Blade men may get pictures at R. O. T. C. Barracks office today.

Phi Theta Upsilon—business meeting today 5 p. m. at Woman's building.

Theta Sigma Phi meeting today at 4:30, 105 Journalism, All members urged to be present.

Orchesus meets tonight at 7 in the Woman's building.

Mother's Day directorate meeting at 4, 104 Journalism.

Alpha Kappa Psi luncheon today at noon, College Side, Skelley will speak.

All heads of women's houses will meet at the Anchorage today at noon.

Alpha Delta Sigma—All pledges and members at the Anchorage Thursday noon this week for the next to last meeting of the year. The main feature of the meeting will be the election of officers for 1928-29.

S. E. Skelley of the Pacific Light and Power company will speak today in 105 Commerce at 2 o'clock on financing of public utilities. Everyone invited.

## Twelve Girls Elected To Pi Lambda Theta, Education Honorary

The pledging of twelve girls to Pi Lambda Theta, honorary educational society for women, was announced last night by Frances Schroeder, president of the group.

Those pledged are: Grace Ash, senior in architecture; Rena Alexander, junior in latin; Irene Bowlsby, sophomore in education; Charlotte Carl, junior in romance languages; Jane Cochran, junior in education; Jeanette B. Edge, senior in chemistry; Irene Hollenbeck, junior in education; Kathryn Kirk, senior in English; Marie Klev, senior in music; Anna Lewis, senior in music; Shirley Maguire, junior in English; and Gertrude Tolle, raduate student in mathematics.

Initiation will be held in the woman's lounge at the Woman's building Thursday afternoon, May 10, at 4:45. A banquet will be given at the College Side Inn after initiation in honor of the members.

Pi Lambda Theta was organized in 1917 for the purpose of encouraging graduate work and research in education and securing a greater interest in educational affairs. There are twenty-four chapters of the national fraternity now. Active, associate and graduate members may be chosen by the group. Active members must have a 2.25 scholastic average and have taken at least nine hours of education.

Present officers of the local chapter of Pi Lambda Theta are: Frances Schroeder, president; Beatrice Towlers, vice-president; Julia Brauninger, secretary; Bernice Razor, treasurer; and Gertrude Hill, keeper of records.

## Architects Meet At Convention

## Dean Lawrence Departs For St. Louis, Mo.

Ellis F. Lawrence, dean of the school of architecture and allied arts, has left for the combined conventions of the Association of Collegiate Schools of Architecture and the American Institute of Architects at St. Louis, Missouri. He will visit art and architecture departments at the University of California, Leland Stanford University, University of Southern California, University of Kansas, and Washington University at St. Louis, before attending the conventions which take place May 14 to 18.

The dean will be a representative of the University of Oregon school of architecture and allied arts, and of the Oregon chapter of the American Institute of Architects, while in St. Louis, Mrs. Mabel Houck, secretary of the arts school, announced.

Plans for the fifteenth annual convention program were outlined by Mrs. Houck. George H. Edgell, dean of the Harvard University school of architecture, will speak on "American Schools and American Architecture." A discussion of the relation of architectural schools with the Beaux Arts Institute of Design will be introduced by William Emerson, head of the department of architecture at the Massachusetts Institute of Technology.

The opening address for the collegiate schools will be made by Goldwin Goldsmith, president of the association and head of architecture at the University of Kansas. Warren P. Baird, dean of the school of fine arts at the University of Pennsylvania, will give a report as association delegate to the Pan-American congress of architects, and many other prominent educators and architects will speak.

Dean Lawrence expects to be back on the campus the evening of May 23, Mrs. Houck stated.

Entertain Your Visiting Friends at NIMROD INN for Dinner

## Journalism Extension Course Now Available

An introductory course in journalism is now offered by the extension division for correspondence work. The course, which will be conducted by George Turnbull, professor in the

school of journalism, is a survey of the whole field of news writing and news editing and gives opportunity for practical application of the principles involved and for intensive work in the simpler forms of news writing. A registration fee of \$4 will be charged for the course, which will include sixteen lessons.

**CLOTHES**  
 Ready-made And Cut to Order  
 ESTABLISHED ENGLISH UNIVERSITY STYLES, TAILORED OVER YOUTHFUL CHARTS SOLELY FOR DISTINGUISHED SERVICE IN THE UNITED STATES.  
**Charter House**  
 Suits \$40, \$45, \$50 Topcoats  
 Charter House

BY SPECIAL APPOINTMENT OUR STORE IS THE  
**Charter House**  
 OF EUGENE  
 The character of the suits and topcoats tailored by Charter House will earn your most sincere liking.  
**Ragan & Bowman**  
 825 Willamette St.

## Oregon Man Attends Military Convention

A total of 71 educational institutions in the United States, representing every state in the union, had delegates to the recent national convention of Scabbard and Blade, national honorary military organization, at Columbus, Ohio, April 26, William C. Rutherford, captain of the local chapter and delegate to the convention, states. Rutherford, who just returned to the campus from the convention, reports that he had a very enjoyable trip. He left for the convention April 23.

"Most of the discussion at the gathering was given over to talks of fighting the opposition to student military training now being made in the United States," Rutherford said. "Kirby Page, especially, was attacked by the delegates. The spirit of the meeting was directed toward a stronger organization of student military units in the United States." Two new chapters of the organi-

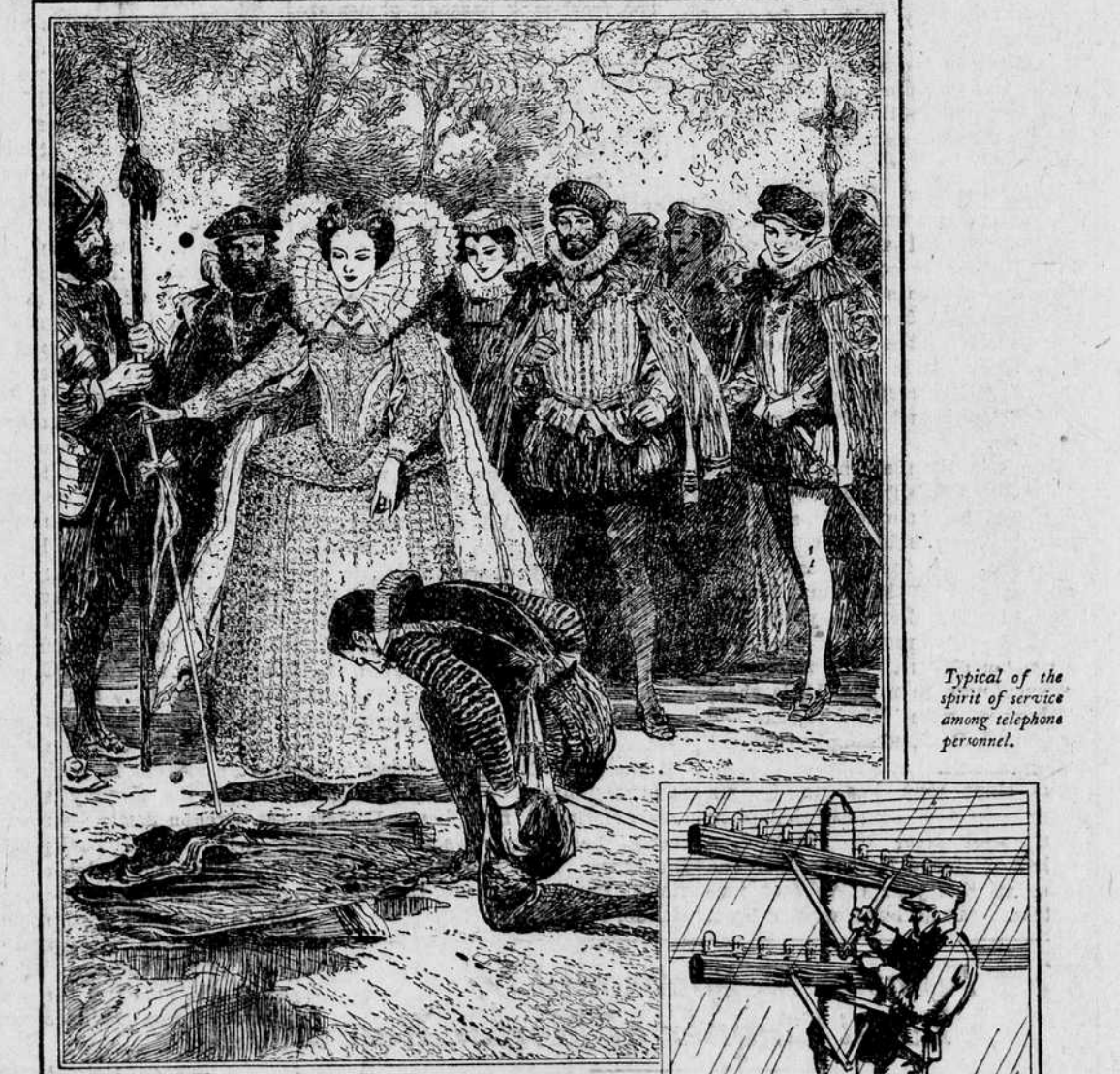
## Jewett Contest Offers Women \$50 in Prizes

More women are asked to enter the Jewett extemporaneous speaking contest to be held next Tuesday afternoon, May 14, at 4:15. This is a postponed date, as the time was originally named for May 10.

At present, there are about 20 who have signified intentions of competing for the total of \$50 in prizes, but Professor J. K. Horner wants more to enroll in the contest. He asks all interested to see him immediately.

At 1:00 p. m. Tuesday, all contestants will draw for topics on the main subject of "Woman's Place in the Modern World." From an hour and a half to two hours will be allowed for preparation, at the end of which the speeches will be presented.

**Now Playing**  
 It's a Treat!  
**HIS DOG**  
 JOSEPH SCHILDKRAUT JULIA FAYE ROBERT EDESON and SALLY RAND  
 Adapted from the widely read story, by Albert Payson Terhune, of love and devotion, dramatic, thrilling and appealing.  
**On the Stage**  
 ATMOSPHERIC PROLOGUE  
 Twice Nightly  
 Also COMEDY NEWS  
 Rex Prices  
 Continuous Today 1:30 to 11 P. M.



Commerce, too, has its Raleighs  
**RALEIGH'S** definition of courtesy of personnel and the executive responsible for all these activities and more.  
 With the increasing telephone requirements of the nation, this is a work of increasing complexity. Through years to come Bell System men will find an even greater opportunity of service.  
**BELL SYSTEM**  
 A nation-wide system of 18,500,000 inter-connecting telephones  
 "OUR PIONEERING WORK HAS JUST BEGUN"