

Sphinx Gain Honors Over Friendly Hall

Beta Theta Pi Comes From Behind To Win Torrid Game

Delta Tau Delta Wins To Tie Betas

Successfully withstanding the spirited rally of the Friendly hall hoopers during the last part of the first half, the Sphinx quintet garnered the championship of their division by a score of 23 to 16, and earned the right to compete in the donut finals. The Sphinx scored first, when Poliear, stellar forward looped the sphere soon after the game started. He was fouled in making the shot and converted one of his free throws. Then Klinger, lanky center for the Egyptians, rang the bell with another basket, making the score 5 to 0. Then the Black-shirted Hall team started to roll up the score, until a minute before the half they were in the lead, 12 to 11. Just before the gun, Leslie, Sphinx forward, scored two counters with a long shot, and gave his team a lead which they never relinquished during the remainder of the contest.

Leslie was high point man for the Sphinx with a total of 8 markers, while Reed, Miller and Angstead with 4 points apiece, shared the honors of the Friendly quintet.

Sphinx Speedy
During the second half the speedy Sphinx steadily increased their lead over the now exhausted Hall team, which was able to score only once in the latter period. Lineups:

Sphinx 23 Friendly Hall 16
Poliear (7) (4) Reed Leslie (8) (2) Wick Klinger (2) (2) Colwell Boyer (6) (4) Miller Johns (4) Angstead

Substitutions—Sphinx: Kashuba for Klinger, Bird for Boyer, Boyer for Bird. Friendly Hall: none. Referee, Spike Leslie.

Starting off with a splendid rush that netted no score for either side until near the end of the first half, the Beta varsity took first money over the Alpha Beta Chi in a 12 to 10 scrimmage.

With the lead jumping first to the Betas, then to the A. B. C.'s, Andrews and Kelley rang up a field goal apiece, giving the winners their final margin. The Alphabets hit their stride with two minutes to go, at the close of the first period and at half time the winners faced an A. B. C. lead of 5-1.

Kelley High Pointer
Overcoming this obstacle in the second session, the Betas slid into a tie for division honors with the Deltas. "Pup" Kelley was high point man with six counters, Strong of the Deltas, making the next bid with four to his credit. Lineups:

Beta Theta Pi 12 Alpha Beta Chi 10
Andrews Strong Seigmund Neer Hall Field Kelley King Olinger Cox

Substitutions—Betas: Colbert for Hall. Official, R. Okerberg.

With a win necessary to glean a tie for division honors, the Deltas pulled a 20-15 count nicely out of the fire, and knocked over Stoddard and his fire-eating Sigma Chi team-mates.

Farmers Victors
A Delt slump at the first of the game made it look like a Sigma Chi win, but the Farmers finally started a drive that put them ahead, 6-2 at the half. Toward the middle of the second period, a nice exhibition of fast breaking and short passes gave the Deltas an eight point lead, which they maintained until the closing moments of the contest. Stoddard looped a couple of prayer shots and passed cleverly to his mates for another, but the drive was broken up by the Deltas as the game ended.

East and Jost of the Deltas, and Stoddard of Sigma Chi, called it quits for high man laurels with six marks each. The number six had a great day as popular high point score, no casaba tosser in the old gymnasium being able to break it.

The clever floor work of Wolfe, Delt forward, did much toward winning the game. Lineups:

Delts 20 Sigma Chi 15
Wolfe Lockwood Gordon Swindells Stein Almquist East Stoddard Jost Johnson

Substitutions—Delts: Beal for Gordon, Wood for Jost, Wheeler for Gordon, Beal for Stein. Sigma Chi—Will (5) for Lockwood, Lockwood for Johnson, Jones for Almquist. Official, R. Okerberg.

Up at McArthur court, the Sigma Phi Epsilon basketballers won by default from the Alpha Tau Omegas. The game was scheduled for 4:15.

Ball

(Continued from page one)

Messrs. and Mesdames L. C. Wilkinson, F. W. Enke, C. A. Bewl, Will L. Finley, J. R. Maguire, E. E. Johnson, Dr. and Mrs. W. S. Patrick, Messrs and Mesdames L. L. Williams, M. H. Gunther, T. H. Comte, Julius Esteland, A. S. Helliwell, Hank, W. P. Jones, J. S. Ready, H. E. McCraney, W. B. Wells, S. Price Hart, J. E. Maxon, B. S. Morrow, L. H. Look, J. C. Stevens, F. O. Nieller, E. A. Clark, J. J. Pantun, J. W. Creath, T. M. Talbot, G. A. Kingsley, Phil W. Jamney, L. R. Shaver, A. C. Hopkins, Randall S. Jones, G. Morton Vinton.

Messrs. and Mesdames L. H. Huel, H. H. Calk, Barney McPhillips, Raymond Vester, E. W. Madden, N. G. Rossman, F. C. Gulick, W. P. Richardson, G. T. Gerlinger, E. F. Lawrence, J. S. Taylor, C. H. Minnaugh, S. L. Leeders, E. W. Powers, E. F. Douglas, Dr. and Mrs. Frank Boyden, Messrs. and Mesdames S. B. Thompson, Graef, W. O'Bryant, J. Doyle, Wm. Kindell, M. E. Walker, P. A. Livesley, G. O. Freck, W. F. Hilgers, R. B. Nentzig, Don E. Bowman, H. A. Templeton, G. W. McMath, Kenneth Houser, T. A. Laing, Ross McKenna, R. A. McAlpin, Peter Clark, W. C. Davis, H. J. Roberts, D. P. Price, J. R. Maquire, J. H. Kincaid, H. D. Foster, Robert Yoke, Paul Calk, B. K. Clear, H. C. Schade, R. D. Nicholson, W. W. Loran, A. J. Johnstone, F. P. Richards, V. E. Hughson, L. F. Sundbom, Charles Gramm, C. L. Powell, B. B. Lutten, C. C. Hall, Herman Enke, G. C. Osburn, and J. S. Dougall.

Frederic S. Dunn To Give Talk On Rome
Professor Frederic S. Dunn, instructor in Latin, will deliver the address "Footsteps of Peter and Paul in Rome," before members of the Baptist Church in Eugene next Sunday evening. Saturday evening, December 3, he will repeat the address before the Men's Club in Marshfield.

Unaffiliated To Sit For Oregana Pictures Friday and Saturday

Students who reside on the University of Oregon campus may not be allowed to go home over the Thanksgiving vacation but they can still have their pictures taken.

Kennell-Ellis, photographers for the Oregana, request that all unaffiliated students who are connected in any way with honorary scholastic or social groups, appear to have their pictures taken on Friday and Saturday of this week.

Among those groups, the members of which should appear at the studios, are: Mu Phi Epsilon, Phi Mu Alpha, Councilor Club, Daly Club, Condon Club, Hermian Club, Mask and Baskin, Pot and Quill, Sculpture Club, Phi Chi Theta, Phi Lambda Theta, Theta Sigma Phi, Sigma Delta Chi, Sigma Delta Pi, and any other groups which are not included. This does not mean repeated portraits for those members who belong to fraternity or sorority groups.

In order to have the year-book published by Junior Week-end and to have it satisfactory in every way, it is absolutely imperative that these pictures are taken at this time. When having the pictures taken it is necessary to be sure to state from which group you come.

Exhibit

(Continued from page one)

the chill of fog, are portrayed in "Gray Day Dunes—Nye Beach."

Paintings of the country in the vicinity of Eugene are present in this collection. Places seen on a horseback ride or hike up the river

and into the hills, which one has tried unsuccessfully to find again, have been found and interpreted by Mr. Schreff, with all their vividness and atmosphere.

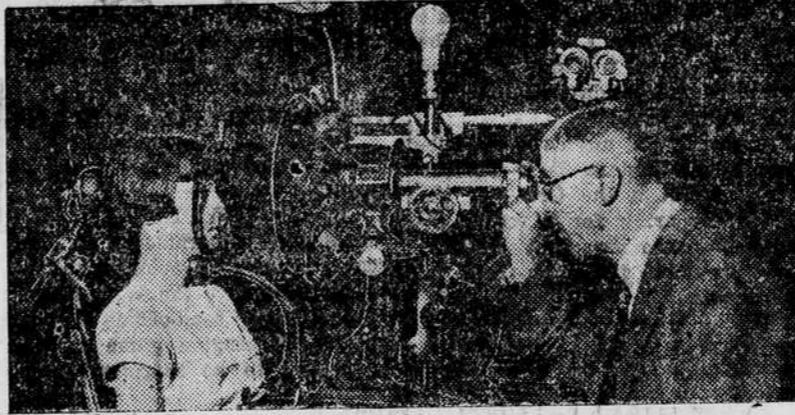
"A Field of Camas Lilies," near Eugene, has a wealth of softly blended purples, blues, and greens. Several different paintings of the McKenzie river have a depth of shadow in background and a contrasting clearness of the water, which makes them particularly interesting.

A group of small oils are charming in their almost miniature nature. Two attractive views of the ocean from Neah-Kah-Nie cliff show the contrast of light at different times of day. By morning light the waves are green, blue, and

silver. At sunset, gold, rose, and soft purple predominate.

One of these small paintings breathes a spirit of storm and the unknown. It is the only painting of night in the collection. The moon can scarcely be seen over the shoulder of a dark cliff, seeming to peer from behind tossed clouds of gray-blue. In the foreground is a rocky beach strewn with drift and chipped pebbles. This study, subtle as it may be, commands a response because of its unusual nature.

Mr. Schreff is a professor in the school of architecture and allied arts and is head of the fine arts department. For several years, he has done no painting of Oregon subjects, giving most of his attention to the California coast, so that his work should be of special interest to both students and townspeople. The exhibit will be open for the remainder of the week.



Our optical service is modern, efficient and experienced

Dr. Sherman W. Moody

OPTOMETRIST—EYESIGHT SPECIALIST

Suite 831, Miner Building

Telephone 362

A Thanksgiving Dinner That You Can Be Thankful For

If you're feeling low because you had to stay over for Thanksgiving vacation, come down to the old hang-out and you'll go away minus that same feeling. All you need is a gentle reminder of home to brace you up—we can supply that in the quality and quantity of our food. Our reputation alone is thankfulness in itself.

The PETER PAN

THE WORLD'S GREAT MUSIC IS ON VICTOR RED SEAL RECORDS



A death song of Egyptian splendor..

The final scene from "AIDA"

sung by Martinelli and Ponselle on

VICTOR Red Seal RECORDS

This fine recording of the last scene between the doomed lovers in Verdi's famous opera... sung by two of the Metropolitan Opera Company's leading stars... is one of the most beautiful and affecting in the entire range of music. Your musical library will not be complete without it. Let us play it over for you... today!

Turkeys Chickens

Fry and Hens 27 1/2 lb.

Rummen's QUALITY MARKET

66 East Broadway We Deliver

WETHERBEE - POWERS

Willamette at Eleventh

Ain't It a Grand and Glorious Feelin'?

By BRIGGS

WHEN YOUR BEST BEAU WANTS YOU TO MEET HIS FOLKS, AND INVITES YOU TO THEIR HOUSE FOR THANKSGIVING DINNER

- AND YOU WADE THROUGH TURKEY, CRANBERRY SAUCE, MINCE PIE AND PLUM PUDDING

- AND AFTER DESSERT YOU LONG TO SMOKE A CIGARETTE BUT ARE AFRAID OF SHOCKING HIS RELATIVES

- AND HIS PARENTS EXPRESS THANKS FOR THEIR WEALTH

- AND THEN HIS GRANDMOTHER ADMITS THAT HER CHIEF BLESSING COMES IN THE FORM OF OLD GOLD'S

OH-H-BOY! AIN'T IT A GR-R-RAND AND GLOR-R-RIOUS FEELIN'!?

I'M THANKFUL THAT I'M BROAD MINDED ENOUGH TO SMOKE THEM WHAT A RELIEF FOR MY THROAT - NOT A COUGH IN A CARLOAD!

TA TATA

OLD GOLD

The Smoother and Better Cigarette

.... not a cough in a carload



15¢

Send the Emerald Home

SUBSCRIBE For The EMERALD



Five minutes to play

The score 21-0 against dear old Siwash. Brown, the greatest Siwash quarter-back, gets the ball. He rushes down the field for a touchdown. But one isn't enough. He makes another... another... another... until the score stands 28-21. And Siwash wins. 50,000 people go crazy. They yell themselves hoarse. Brown marries the girl and is now mining fire-proof coal in Labrador.

Well! What of it? Brownie, his girl and all the bunch drank "Canada Dry" after the game, the coolest, most thirst-quenching ginger ale they'd ever tasted. Because it contains only pure Jamaica ginger, it has a delightful flavor... tang to it... dryness... sparkle. Because it blends well with other beverages.

Drink "Canada Dry!" The Champagne of Ginger Ales. When your friends drop in... on every occasion.

CANADA DRY

Reg. U. S. Pat. Off.
"The Champagne of Ginger Ales!"
Extract imported from Canada and bottled in the U. S. A. by Canada Dry Ginger Ale, Incorporated, 25 W. 43rd Street, New York, N. Y. In Canada, J. J. McLaughlin Limited, Established 1890.



Play it dark and easy! The name "Canada Dry" on the bottle cap means that no one can put over a fast one on you.

© 1927