

One Out of 121 Oregon Citizens Attend College

State Ranks 3rd in U. S.
Washington 6th With
One to 129 Ratio

Twenty-four Per Cent of
Students Migrate

Oregon is the third ranking state in the United States in the proportion of its population attending institutions of higher learning, according to information contained in the Bureau of Education Bulletin No. 11, for 1926.

One out of every 121 persons in institutions out side of their home state attend some college or university. The neighboring state of Washington rests in sixth place with a ratio of one in 129, California is tenth with one in 146, and Idaho, eleventh, with one in 157. Utah has the ratio of one in 99, which gives it first place, followed by the District of Columbia with one in 103. The average ratio for the United States is one in 212.

Oregon Third Again
The migration of students to institute is shown to include 24.4 per cent of the total number, leaving 75.6 per cent to be educated in home colleges and universities. Oregon is third in the proportion of home educated students with 87.2 per cent, following California with 90.4 and Texas with 89.4 per cent. New Jersey, with 21.1 ends the list.

In the proportion in which it educates and trains its own professional workers, Oregon ranks fifth in engineering, first in agriculture, second in business and commerce, fifth in medicine, third in dentistry, second in pharmacy, twelfth in law, and third in theology.

Among the reasons advanced to account for the migration of students are: unsatisfactory courses of study, the desire to be away from home, higher expenses in the home state, the desire to attend, or not to attend, a small college, strict entrance requirements, knowing other students, college life, outdoor life, military training, failure to pass entrance examinations in home state, faculty, scholarships or employment, religious, and co-educational institutions.

Men Like to Go
The high proportion of home enrollment in the western states is laid to the existence of good facilities for higher education and the distances to be traveled before equal or superior institutions can be reached.

A general decline in the percentage of migration is said to be under way, due largely to the increased number of women attending colleges and universities. The women do not go as far from home for their education as do the men, it is indicated in the bulletin. Other factors are the growth of urban institutions and the increase in state facilities.

With 35 per cent of the student bodies of colleges and universities made up of women, the national ratio for women is one in 294 persons, for men, one in 167. Oregon is fourth in the proportion of women in the higher institutions with one in 146 and third for men with one in 104.

Anne Beck Originates, Demonstrates Course

The first demonstration of the new state course in music appreciation was given yesterday under

the supervision of Anne Landsbury Beck, instructor in the school of music, and originator of the plan. Second grade children of the Condon school made up the class, and according to Mrs. Beck, they showed the keenest delight and interest in the new system.

The demonstration was attended not only by the practice teachers in the school of music, but also by the primary teachers of the city schools, and Mrs. Beck predicts a successful future for her plan, and probable adoption in the Eugene schools next year.

Although the system is designed for application to all grades through the eighth, work has started with the primary grades in the teachers' training classes. Toy instruments are given to the children so that they may use them as they think they should be used to produce the pieces which are played for them on a phonograph. Another demonstration will be given at the Condon school next Monday at 4 o'clock.

Dr. Smith Will Talk Before Sigma Delta Pi

"Spanish Influence in the Philippines" will be the subject of an illustrated lecture to be given by Dr. Warren D. Smith, head of the department of geology, at the monthly open meeting of Sigma Delta Pi, national honorary Spanish fraternity, Thursday night in the geology lecture room in Condon hall at 7:30 o'clock.

Having lived for ten years in the Philippines, studying the life, geology and geography of that region, Dr. Smith is an authority on that region. Slides will add to the interest of the lecture.

Communication

(Continued from page one)
ternal life of the university, it is inevitable that the heightened feelings and tensions of real politics should be felt. And properly so, for the American state university, whether for better or for worse, is not a learned body, dwelling apart from the general social fabric, but it is an integral part of our society, and a replica in miniature of the larger society without. Hence the wide significance of this issue of the control of the press within our academic precincts. This controversy is bound to have reverberations throughout the state and the country: and we should be glad that the issue is one of principle, not one of petty scandal, or indecorum, or personalities.

Yours faithfully and cordially,
S. STEPHENSON SMITH

Meet

(Continued from page one)
some of them have a number entered.

Schools that have sent in their entries are Franklin, Jefferson, Lincoln, and Commerce, of Portland. Astoria, Corvallis, Myrtle Point, and St. Helens high schools are also sending tracksters.

Those which have not sent in entry lists so far are, Salem, Vancouver, Vernonia, Albany, Grants Pass, Beaverton, Marshfield, Grass Valley, and Benson Polytechnic, Roosevelt, Grant, and Washington of Portland.

Others planning to come are Klamath Falls, Springfield, Roseburg, Bend, Heppner, Clatskanie, Cottage Grove, Echo, Hood River, Forest Grove, North Bend, and Hillsboro.

"Charm School" To be Produced By Guild Players

Sophomores Will Present
Comedy Middle of
Next Month

"The Charm School," a three-act comedy by Robert Milton and Alice Duer Miller, is to be produced by the Sophomore Company of Guild theater the middle of May. This is a comedy on boarding school life, its trials and tribulations, and the outcome of having a young, handsome, unmarried man at its head.

Miss Florence E. Wilbur, director of drama, has selected the cast. It is as follows:

Austin Bevans Calvin Horn
an automobile salesman with ideas, which
David Mae Kenzie Lynne Black
a law student, considers impractical, though
George Boyd Elmer Grimm
an expert accountant is unwilling to cooperate and so are
Jim Simpkins Glenn Potts
and
Tim Simpkins Deryl Meyers
who toil not and have never seriously considered spinning
Homer Johns Milton George
is the guardian of
Elise Benedotti Frances Wardner
president of the senior class at a school presided over by
Miss Hayes Helen Hembree
who is loved and feared by all who know her, including the secretary,
Miss Curtis Thelma Park
who is always trying to think well of senior class consisting of
Sally Boyd Sara Bennethum
who is George's sister, and
Ethel Spelvin Helen Barnett
the chum and confidant of the mischief maker
Muriel Doughty
Renee Grayce Nelson
who is another one of the senior girls, others being
Lillian Stafford Elizabeth White
Marge Kent Bernice Via
Celia Gray Le Veda Jones
Edna Lewis Melba McDonald
Dotsy McLean Ora May Mosley
Mary O'Brien Dorothy Straughan

Theaters



McDONALD: Last day: "Across the Pacific," a glowing romance of the Philippines, where a man tried to forget, and to hate all women, but learned to love one instead, with Monte Blue, supported by Jane Winton and Myrna Loy, two of screen's most beautiful women; Al St. John comedy, "Jungle Heat," a red hot laugh expedition, with roars of mirth on every side; on the stage—Sharkey Moore and his serenading Merry-Macks in "Oriental Moments," featuring "Song of Shanghai," "Star of India" and "Japanese Sunset," in a special setting, nightly at nine; International news events of world interest; Frank Alexander in melodrama.

Classified Ads

A GOLD folding pocket comb with initials K. D. on it, lost on campus between Art building and 12th and Hilyard. Finder please return to Emerald business office. Reward. a20-21-22

ous musical score on the super-organ.

Coming (Thursday) Harold Bell Wright's The Winning of Barbara Worth," with Ronald Colman and Vilma Banky, the first showing of the favorite romance from the pen of America's most popular novelist, and with the screen's greatest lovers in the leading roles. (Next week) Harold Lloyd in "The Kid Brother."

REX: First day: Jules Verne's mighty melodrama, "Michael Strogoff," with Ivan Moskine and a cast numbering over 6,000, in the most colorful drama the screen has ever produced,—pronounced by the leading critics of two continents as the greatest of the great melodramatic achievements of all time; special musical accompaniment, John Clifton Emmet at the organ; selected comedy and novelty subject.

COLONIAL: Today and Thursday: "The Flaming Frontier." An all-American drama of the old time west, a beautiful romance of West Point and the Western Frontier—a blazing spectacle as authentic as a page of American history—and the most astounding climax ever filmed. Indians and cavalry by the thousands in it. Custer's last stand. Also Aesop's fables and a comedy.

Pledging Announcement
Phi Kappa Psi announces the pledging of Wright Eshelman of Long Beach, California, and Ed Johnson of Kelso, Washington.

Subscribe for the Emerald

McDONALD
LAST DAY

Across the Pacific
with
Monte Blue
Jane Winton, Myrna Loy,
Tom Wilson, Walter McGrail

A colorful romance on a tropical isle.

MERRY-MACKS

Frank's Music

TOMORROW

RONALD COLMAN **VILMA BANKY**

Never a waver
in the
Edgeworth
flavor



F. G. Young, dean of the school of sociology, has been ill since Sunday evening and is under the care of a physician. It is doubtful whether he will be able to be out today, according to Mrs. Young.

new, finer faster trains to CALIFORNIA

Cascade—new extra-fare deluxe flyer via Cascade Line. Faster time to San Francisco than ever before. Leave Eugene 1:45 a.m., arriving San Francisco 9:25 p.m. same day.

West Coast—via Cascade Line through to Los Angeles. Leaves here 9:20 p.m., arriving Los Angeles 8:30 a.m. second day. Pullman without change to San Francisco, arrives there 8:35 p.m.

The Shasta—continues over Siskiyou line to San Francisco. Leaves Eugene 12:10 p.m., arrives San Francisco 11:50 a.m. next day. Carries day coach and handles business to and from all schedule stops.

Oregonian—via Siskiyou. Leaves 5:55 a.m., arriving San Francisco at 9:50 a.m. day following.

to OREGON STATIONS

To Ashland—train No. 31 leaves at 12:20 a.m. **To Klamath Falls**—train No. 91 leaves at 8:30 a.m. instead of 7:30 a.m.

To Portland—train No. 14 (local sleeper) leaves 3:10 a.m. No. 16 leaves 5:22 a.m. No. 34 leaves 11:05 a.m. No. 18 (extra-fare train) leaves 12:27 p.m. No. 32 leaves 3:30 p.m. No. 12 leaves 7:10 p.m.

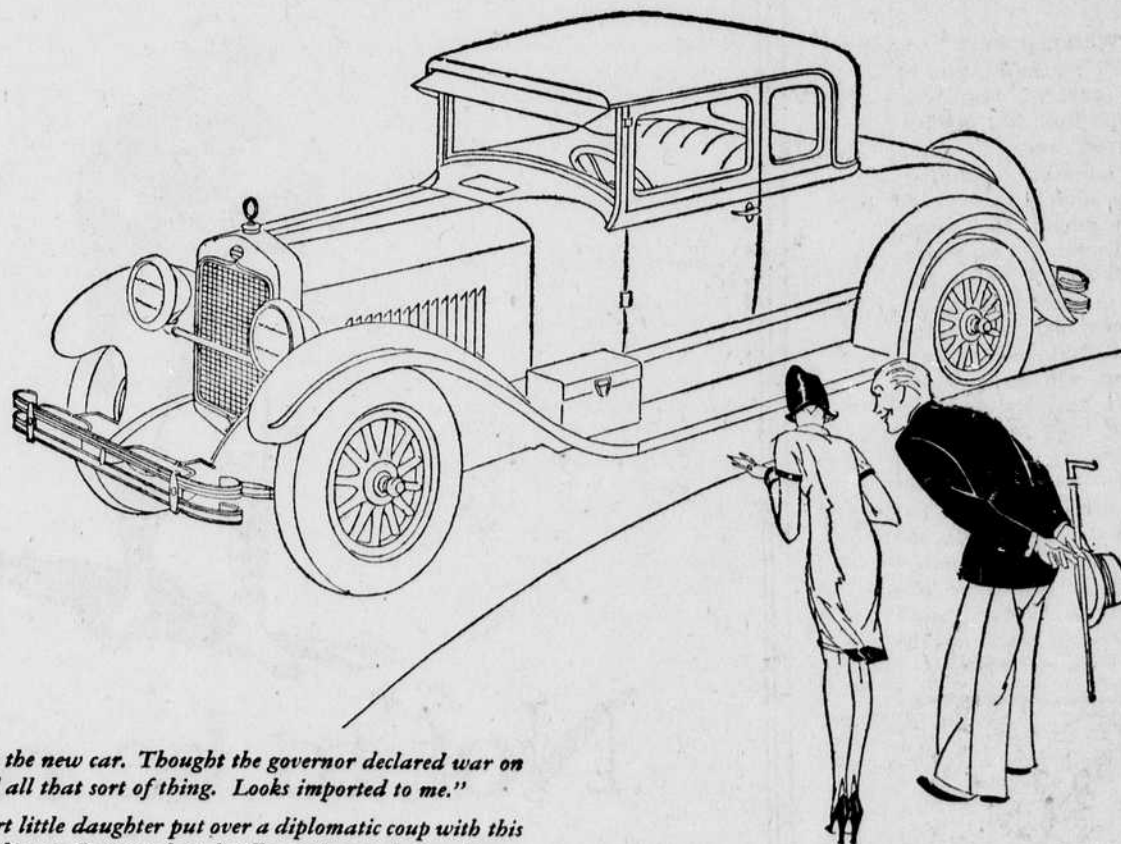
To Coos Bay—train No. 502 leaves 8:00 a.m. Arrives Marshfield 1:15 p.m. Powers 4:05 p.m. Train 504 leaves 1:00 a.m. arrives Marshfield 7:25 a.m.

Southern Pacific



F. G. LEWIS,
Ticket Agent
Phone 2200,

UNE RÉVÉLATION AU SALON—LE TEMPS, PARIS



"M-m-m, so that's the new car. Thought the governor declared war on extravagance and all that sort of thing. Looks imported to me."
"He did, but smart little daughter put over a diplomatic coup with this coupe. Got just the car I wanted and still saved enough for a heavy summer at Bar Harbor."

IMPORTED? Well, yes, in a manner of speaking. Its style was conceived in the fashion center of the world—Paris—and its lines and colorings smack of the sophistication of the Champs Elysées. Dietrich designed it—Dietrich, builder of the finest custom bodies. Sounds expensive, doesn't it—but the Erskine Six will win the heart of even the canniest descendant of the Scotch.

Dimensions are compact, but there's room inside no end—thanks again to Dietrich, the master. Two in front, two more in the rumble seat—a foursome; let's go.

Performance as typically American as Grantland Rice's hand-picked team—and as far ahead of its time as the class of '30. Through traffic and away while others are wrestling with gear-shifts—a regular Charlie Paddock on get-away. Honest-to-goodness mile-a-minute speed if you want to "get there in a hurry." Stop and turn on a manhole cover or park with a hair's breadth.

Get in under the wheel and learn why the latest vogue in motors calls for "The Little Aristocrat."

The Erskine Six Custom Coupe, as illustrated, sells for \$995 f. o. b. factory, complete with front and rear bumpers and self-energizing 4-wheel brakes.

ERSKINE SIX

THE LITTLE ARISTOCRAT



LAST DAY

For the most unusual in
entertainment see



—with—
Alice Terry
Paul Wegener
"GIRLS"
A Varsity Comic
Aesop Fables Fox News
Nites 50c
Matinee 35c

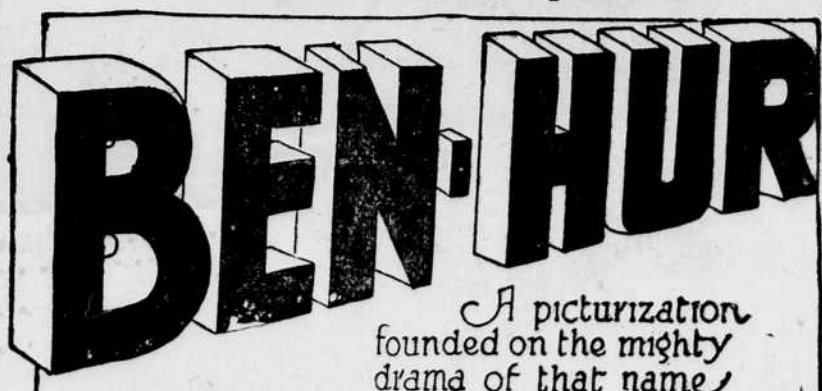


MON. & TUES.
Apr. 25 and 26

Two Days

Matinee at 3—Evenings at 8:30

The First and Only Presentation Here This Year of
The Superb Cinema Spectacle



Lew Wallace's immortal story

PRICES
Tax Included
Matinee: floor, first 4 rows 75c, last 14 \$1.10, balcony, six rows, 75c, last 7 50c, night: floor, first 4 rows \$1.10, last 14 \$1.65, balcony, six rows \$1.10, last 7, 75c.

Presented Exactly as in New York and Los Angeles with

Touring Orchestra
OF TWENTY PIECES

and Complete Auricular Effects
Direct from the Auditorium, Portland

MAIL ORDERS NOW
Box Office Seat Sale Saturday