

# Society

By Catherine Spall

(Society communications can be telephoned to the Society Editor of the Emerald at 655 or 204).

Lent seems not to have affected the social life on the campus, and although informal affairs have taken precedence over the more formal dances, nevertheless the few formal given over the week-end made up in attractiveness what was lacking in quantity. The Women's Glee Club concert on Friday evening was the largest event and one which has always been keenly anticipated. Washington's birthday will be the inspiration for much entertainment planned for the coming week.

An old Japanese garden with lovely lavender wisteria, drooping in an artistic effect from the lights, and from the garden wall, and large yellow chrysanthemums gracing various parts of the rooms, made an enhancing scene for the Delta Delta Delta formal Saturday evening at the Woman's building.

The dance programs were contained in a leather address and engagement book which were the favors. Louise Hatfield, of Portland, gave the feature dance of the affair.

Patrons and patronesses included Governor and Mrs. Walter Pierce, Professor and Mrs. Albert Sweetser, Dean and Mrs. A. C. Robbins, Professor and Mrs. E. E. DeCou, and Mr. and Mrs. Bruce Giffen.

The upperclassmen of Alpha Phi sorority entertained with a dinner dance last evening at their residence. The St. Valentine motif was carried out in the centerpiece of red roses, the red candles, and the clever placecards. Twelve couples attended the dance. Mrs. Jesse Stearns and Mrs. George Fitch acted as patronesses.

A silver fountain, glistening as if moonlit, in the center of an Oriental garden with dark trees, picturesque with oriental fruits hanging from their limbs, fancy lanterns of oriental architecture in black and gold colors, while others of delicate colors diffused soft glows upon the scene—this was the Kappa Delta Phi formal given at Ye Campa Shoppe Friday evening.

Cleverly combined were the programs with the favors which were leather desk pads, upon which were embossed the fraternity's pin. A dainty little girl distributed an Ophelia rose to each of the women present, wound upon the stem of which was the man's name with whom she had the feature dance.

The list of patrons and patronesses for the affair were Professor and Mrs. E. E. DeCou, Professor and Mrs. Harry Scott, and Mr. and Mrs. Walter Nichols.

The freshmen of Kappa Alpha Theta entertained for the sophomores with a dance Friday evening at the chapter house. Decorations carried out a garden motif with lattice work and a pastel color scheme. A number of girls from Portland who were honor guests at the affair included Francis Effinger, Ellen Steele, Harriet Adams, Hannah Lewin, Hazel Mary Price, Florence Fowler.

The engagement of Donald Fraser of Ashland to Miss Marjorie McElvaney of Ashland was announced at the Kappa Sigma house Wednesday evening. Mr. Fraser who is a sophomore in the department of geology is a member of Theta Xi fraternity at Stanford. He and Miss McElvaney were school-mates in Ashland high school.

A number of social events were given during the week-end when Kappa Theta Chi fraternity was installed as the Oregon Alpha chapter of Phi Kappa Psi national fraternity. The installation proper was an event of Friday evening. On Saturday afternoon the visiting officers of the fraternity were the honor guests at a reception given for them in the Alumni Hall of the Woman's building to which three hundred persons were bidden. The national officers present were John L. Porter of Pittsburgh, Pa., representing the president, George E. McIlvaine, who is in South America at the present time; Shirley E. Meserve of Los Angeles, vice-president; and former president Dan G. Swannell of Champaign, Ill. A stringed orchestra furnished music during the afternoon.

Saturday evening the Portland Alum-

ni association of Phi Kappa Psi gave a banquet at the Osburn Hotel for all the visiting and the newest Phi Psis. In honor of the wives and daughters of the visiting fraternity men, Mrs. E. E. DeCou, Mrs. W. F. G. Thacher, Mrs. Eric W. Allen, and Mrs. Edna Datson acted as hostesses at a dinner Saturday evening in the Dean of Women's suite in the Woman's building. Following the dinner the twelve guests were entertained at the home of Mrs. Thacher when the latter gave a delightful musicale in their honor.

Friendly Hall entertained Sunday with an enjoyable musicale which was one of a series they are giving. Assisting in the affair were Miss Alberta Potter on the violin, Miss Marvel Skeels who sang several selections, Mr. Ralph Hoebler, who played the cello, Mr. Reuben Goffreiere on the piano, and Mr. Mori Woods who gave a number of vocal solos.

Prison-barred were the windows of the Kappa Alpha Theta house last night when the upperclassmen entertained with an informal dance. The entire decorations were in keeping with the prison motif and the walls were devoid of pictures. The programs were of cardboard striped with gray bars. Upon entering the house each man's head measurement, fingerprints, and foot measurements were taken. He was then given a number by which he obtained the same numbered program, and by which he was known during the evening. Miss Mary Gill of Portland was a guest at the affair as well as a number of rushees from Portland.

Miss Hildred Hall, a senior in the school of music and a pupil of John Stark Evans, gave her graduate recital in the Alumni Hall Wednesday evening. Miss Marvel Skeels, mezzo-soprano, assisted Miss Hall. The affair was very delightful.

Dean and Mrs. John Straub were dinner guests Thursday evening at the Phi Sigma Pi house.

Kappa Sigma fraternity was the host at a dinner for eight Delta Delta Delta's Thursday evening. Professor and Mrs. C. L. Kelly were also guests at the affair.

Alpha Xi Delta entertained with a brother dinner Wednesday evening. St. Valentine was the motif for the decorations which consisted of a centerpiece of red carnation on the table, red candles, and dainty Valentine placecards. Six brothers were present at the dinner.

Miss Betty Greene, an Alpha Phi from the University of Washington who is motoring South was a guest Thursday at the Alpha Phi house.

Miss Betti Kessi, '22, was a visitor at the Alpha Sigma house during the week.

An affair that is being anticipated is the colonial tea to be given on the afternoon of Washington's birthday at Hendricks Hall, at which the women of the hall and the Eugene branch of the D. A. R. organization will be joint hostesses.

Miss Madeline Logan, '22, spent the week-end on the campus.

Another event planned for Washington's birthday is the matinee dance which the Women's League is sponsoring. It will be one of the biggest affairs of the week.

Delta Tau Delta was the host at dinner Thursday evening for a number of Kappa Kappa Gammas.

Delta Gamma entertained seven Sigma Chis at dinner Wednesday evening.

## THIS WEEK

(Continued from page one)

Jones, an honest seaman. The government dug up James, but found no jewels. All await the next treasure tale with baited breath.

Reform has the National capital in its grip. Changes in national administration are sought by some far-seeing solons. A combining of departments is desired, and the elimination of a post-elect on session of the national congress is sought. Also, it is suggested that the President and newly elected congressmen take office immediately after the New Year following their election.



Do you know that we carry one of the largest stocks of Diamonds in town, and that we sell them on easy terms? We also sell for less, and nothing but the finest gems find a place in our store. Prices range from—  
**\$20.00 to \$500.00**

**SKHEELS**  
Jewelry Store  
EUGENE, ORE.  
Opposite Woolworth's

PHONE 452

FOR LUMBER, LATH, SHINGLES AND SLABWOOD  
**The BOOTH-KELLY LUMBER CO.**

Phone 782

Slabwood—Coal—Cordwood  
**ANDERSEN FUEL COMPANY**  
39 East 7th

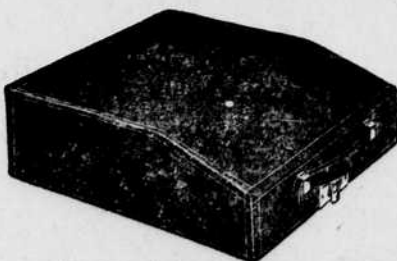
**PEARL GREY DANCING PUMPS**  
MADE TO MEASURE  
**\$1.00 per Pair**

**JIM THE SHOE DOCTOR**

## Eugene Steam Laundry

The place to get your laundering done when you want it done right and with a snap.

Phone 123



Only 4 Inches High  
Yet It Contains  
a Complete Typewriter

The Standard Keyboard

**REMINGTON PORTABLE**

Remember we grant liberal terms if desired

**OFFICE MACHINERY & SUPPLY CO.**  
917 Willamette Phone 148

(Over Western Union)

## REID'S DAIRY

Pure Milk and Cream  
MAID O'CLOVER BUTTER  
Dairy Phone 365 159 9th Ave.E.

## Hello THEATRE

MONDAY, TUESDAY  
WEDNESDAY



A MAURICE  
TOURNEUR  
PRODUCTION

## 'WHILE PARIS SLEEPS'

with

**LON CHANEY**

and

**JOHN GILBERT**

GAY PARÉE

That magic city of life and enchantment—shown with all its glamour and romance, the Mardi Gras and the mysteries of its vivid underworld.

Together with other Heilig features.



## Suits of Whipcord

Good looking and long wearing—whipcord is the fabric of the hour. We're showing a splendid variety of smart sport models for college men.

All the good shades, sand tans, forest browns, heather tones, oyster greys. Four models to choose from.

**\$40.00**

Others at \$45—Whipcord Top Coats \$25

**McMoran & Washburne Store**  
OF SIZE QUALITY & ECONOMY

The balance wheel of a 16 size watch covers—

**16.61 Miles Every 24 Hours**

Could you do the same every day without stopping?

Bring your watch in and let us see the condition it is in; no charge for inspection.

**W. L. Coppernoll, Watch Specialist**

Time Inspector for S. Pacific R. R. and O. E. Ry. Co.  
We repair any make of watch that is worth fixing.  
790 Willamette Street

## OUR ENGRAVED INVITATIONS

combine both dignity and beauty, and our printed ones look nearly as well. You cannot go wrong on either, and our prices are of special appeal.

**Brodie & Co.**  
Printers

Where Quality Comes First  
26 W. 7th Ave. Phone 363

## About Learning to Dance

You might pick up dancing, and you might pick up arithmetic—both are possible, but improbable. We don't entrust a valuable watch to an unskilled mechanic. Then why waste time and money with anyone who knows little if anything of the dance when with one-tenth of the time you can make your dancing an accomplishment. We can give to your dancing that touch, ease and grace that makes dancing a pleasure.

Expert Professional Instructors

**Eugene Dancing Academy**

DREAMLAND—Phone 1303  
1 p. m. to 9 p. m.

## The REX

MONDAY and TUESDAY!

A Pulsating Story of the Great West—  
**ZANE GREY'S**  
famed novel—

"The U. P. Trail"  
with a Star Cast.

and  
**Charlie Murray**  
in  
"FEINT HEART"