

### SOCIAL CALENDAR FOR SPRING TERM MADE UP

Authentic Date of Junior Week-End May 19 and 20

The social calendar for the spring term has been drawn up. There are organizations which have tentatively made their plans for dances to be scheduled on certain dates, but have not yet formally presented their petitions. Only those organizations having presented such petitions at the office of Dean Fox are given here. There seems to be a great deal of confusion on the part of students regarding the dates of Junior Week-end, due to the change of dates from those given in the University catalogue. It has been announced authentically by Charles Lamb, general chairman for Junior Week-end, that the dates are May 19 and 20. There is a possibility that a student body dance will be given on April 22. Memorial day, which comes on Tuesday this year, will be a holiday. Susan Campbell hall will hold their dance either on May 6 or 13, and the Junior Vaudeville will also be on one of those dates. The schedule is as follows:

- April 13—Departmental Play.
- April 14—High School Students' Conference; Departmental Play.
- April 15—High School Students' Conference; O. A. C. vs. U. of O.; Women's Debate at Oregon.
- April 16—Beta Theta Pi, Sigma Alpha Epsilon, Chi Psi formals.
- April 16—Easter.
- April 18—Pomona Glee Club concert.
- April 21—Sophomore lottery; Junior dance.
- April 22—Hermian Club dance; possibly a student body dance.
- April 26, 27, 28—Departmental plays.
- April 28—The annual Orchestra concert.
- April 29—Men's parties; Kappa Theta Chi.
- May 5—Student body dance.
- May 6—Tre Nu dance.
- May 12—Senior play.
- May 14—Mothers' day.
- May 19—Junior Week-end.
- May 20—Junior Week-end.
- May 30—Memorial day (holiday).

### LABOR UNION ADDRESSED

Dr. E. S. Bates Tells Portland Workers to Assist in Production

Dr. E. S. Bates, professor of rhetoric and American literature, spoke before the central labor union at the Labor Temple in Portland Monday night on the organization, general purposes, weaknesses and benefits of unions as seen by one who is neither an employer nor a member of a labor organization.

Dr. Bates, who emphasized the point that organized labor must strive to assist in production rather than in the curtailment of production, states that the general discussion and the questions asked in the open forum which followed the lecture were characterized by intelligence and sane conservatism.

### GIRLS' DIAMOND REPAIRED

New Athletic Field South of Woman's Building Being Put into Shape

The feminine baseball stars will no longer have to chase their balls down in the men's diamond and put on "non-skids" as they round the incline at "second" and start up the 40 per cent grade toward "home," for at last their new athletic field between the Woman's building and the cemetery is going to be fixed up. "Only temporarily," says Miss Alden, "for the ground needs a great deal more work on it in order to make it the ideal athletic field which the physical education department has planned." But the girls are thankful for small favors, and are rejoicing over the fact that if the weather stays nice they will start their doughnut series on two new diamonds on the field between the Woman's building and the cemetery. Until then they will practice on the old diamonds west of the outdoor gymnasium.

### EDITORS TO CONVENE

(Continued from page one)

ington High School, Portland—J. Rodney Keating, editor Lens; George Know, business manager Lens. Turner—Thelma Delzell, editor News Notes. West Linn—Jack Hempstead, editor Green and Gold and The Outlook; Mar-

### CLASSIFIED ADS

Minimum charge, 1 time, 25c; 2 times, 45c; 3 times, \$1. Must be limited to 3 lines, over this limit, 5c per line. Phone 991, or leave copy with Business office of EMERALD, in University Press. Payment in advance. Office hours, 1 to 4 p. m.

FOR SALE—A canoe in first class shape. See me at the Castle theatre. J. C. Koepke. 144-A12

LOST—A silver eversharp with black ribbon. Finder please call 1317 and ask for Julia Raymond. 143-A12

Sagelawn?  
Semi-soft

vin Heckman, manager Green and Gold. Klamath Falls—Ruth DeLap, editor Annual and News Notes. Albany—Miss Vera Horner, faculty adviser Whirlwind; Miss Olga Johnson, editor Whirlwind; Miss Marie Rohrbaugh, business manager Whirlwind; Miss Olive Barker, assistant editor Whirlwind.

A large number of other schools are sending delegates but they have not as yet furnished the School of Journalism with a list of the names of their delegates.

### WANNA MCKINNEY IN HOSPITAL

Wanna McKinney, a senior in the journalism department and a member of Alpha Chi Omega sorority, was operated on for appendicitis Tuesday morning at the Eugene hospital. Physicians say that she is getting along nicely.

### POT AND QUILL MAGAZINE TO APPEAR NEXT MONTH

Funds from Home-coming and Valentine Sales Used

At last the dreams of literary members of the faculty and of students with real ability to write seems to be nearing realization. At a special meeting to be held today the members of Pot and Quill will hold election of officers and make plans for the publication of their new magazine.

Through the sale of pennants at home-coming time and the widespread sale of "Hearts and Kisses" on Valentine's day, the girls have obtained enough money to go ahead with the paper. The money to be obtained through the actual sale of the magazine plus the money already collected is thought to be sufficient to cover the cost.

The editors report that they already have a considerable amount of promising material on hand. All of the members of Pot and Quill are hard at work and the indications are that there will be plenty of material to be picked from, and those articles which are selected will have real literary merit. However, the magazine will not be "highbrow" but very readable and interesting to all the students.

According to Jessie Thompson, the paper will be printed on good paper and will have an artistic, dull green cover. The name of the paper has not been decided on yet but most of the members of Pot and Quill favor naming the magazine after the society itself.

The material will be in the hands of the publishers in about two weeks, and the magazine will appear on the campus some time early in May.

### BURLESQUERS TO PUT ON 'THE SHADY LADY' TWICE

Overdrawn Comedy Expected to Draw Laughs

Thursday and Friday nights the University Burlesque club, composed of most of the men in the dramatic companies, will produce "The Shady Lady." This play was produced in four Coos county towns during the spring vacation and was well received. More work has been put on the play since vacation and it is thought by those in charge that it will be of interest to the students because it is very different from anything which the company has produced this year.

The play is a burlesque comedy and all of the characters and the situations are overdrawn until it reaches very humorous points. The object of the comedy is to overdo the usual "stogy" things which most play writers use. The fact that the comedy is played by an all male cast is also an attraction because this sort of thing has never before been done on the campus, although it is not unusual at other universities.

The cast with one exception is the same as it was during the tour. The entire production will be a burlesque even to the ushers who carry down the little pots of incense just before the curtain rises. The ushers will be boys dressed as girls and the girls may act as stage hands.

The story of the play circles around Cheviot Hill, who makes love to every woman he meets. Each seems to him to be his ideal of love, and this weakness brings forth several complications because not only is he engaged to three, but he is not sure that he is not married to one or two. The situations are made worse because he has an

### Our Reputation

as Shoe Repairers 35 years in Eugene is your assurance of satisfaction.

Miller's Shoe Shop  
43 W. 8th . Eugene

earnest desire to please everyone, including himself.

The cast as it will appear tomorrow night includes: Maggie McFarland, a country girl, Norvell Thompson; Angus MacAlister, her lover, Edwin Keech; Mrs. McFarland, Maggie's mother, Claire Keeney; Belvawney, Cheviot's friend, Virgil Mulkey; Belinda Treherne, who was engaged to McGillicuddy; Mr. Symperson, Minnie's father, Arthur Johnson; Cheviot Hill, Fergus Reddie; Minnie Symperson, Delbert Faust; Major McGillicuddy, Vern Fudge; Parker the maid, John Ellestad.

Sagelawn?  
Semi-soft

### You Can't Beat A Small Store

for quality and service. We have upheld this idea ever since we started in business, and what is more we have been trying to prove it all the time.

"Give us a chance and we'll prove it to you."

### Underwood & Ryan

Neighborhood Grocers  
13th at Patterson

## What Coos County Thinks About "THE SHADY LADY"

What the newspapers said after the performances:

**BANDON: Western World March 30th:**  
The students handled their parts with credit to their personal ability and the work of the department of the school they represented. The three "girls" in the play are deserving of special mention for their splendid feminine interpretations.

**MYRTLE POINT: Southern Coos County American, March 30th:**

"The Shady Lady" as performed by the U. of O. Burlesque Club at the Unique, Tuesday evening was really good. The character delineations and particularly the dialect, were among the best we have ever seen and reflect much credit on Mr. Reddie's coaching. The female impersonations were exceptionally good.

**MARSHFIELD: Coos Bay Times, March 30th:**  
Something of quite a different order was the play, "The Shady Lady," given by the Burlesque Club of the University of Oregon at the Nemerif Theatre last night. While the whole play was purposely ridiculous and each melodramatic situation exaggerated, the high quality of the acting made it but the more to be appreciated.

The characters of the play were clearly outlined and their peculiarities seemed very real. Especially well done were the feminine parts, all played by young men.

**COQUILLE: Coquille Valley Sentinel, March 31st:**

The play was a difficult one for a strictly male cast to present, but it was to their credit that each individual member represented the character he was portraying with an attention to detail and a sincerity that won the admiration of the audience. Even in the ridiculous and comical parts of the show they carried it off with characteristic earnestness and solemnity that proved how painstaking had been the work of their director.

Your Chance to See "The Shady Lady" Comes on Next Thursday and Friday Evenings, April 13 and 14, at Guild Theatre

TICKETS NOW SELLING AT BOX OFFICE, ONE PRICE 50 CENTS

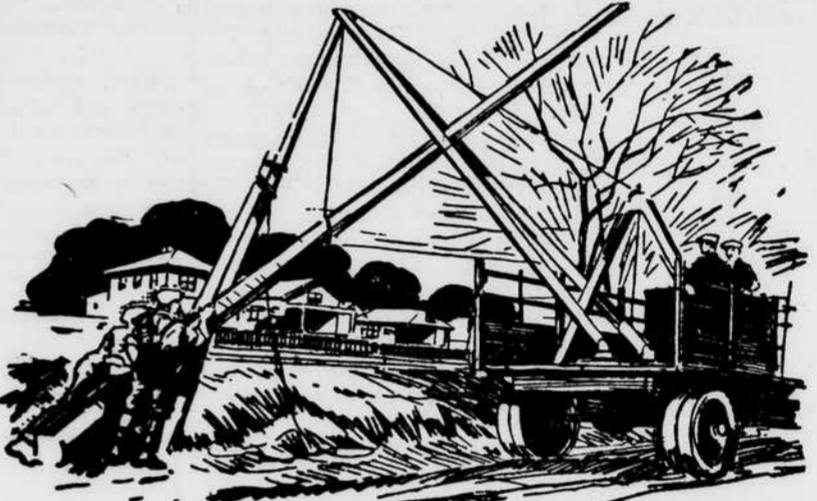


Buy Your Easter Supplies at The Food Department Store  
The finest quality Meats, Hams, Bacon and Eggs  
USE THE PHONE  
**The Table Supply Co.**  
L. D. PIERCE, Proprietor.  
Ninth and Oak Phone 246

With the opening of the term's social season, we want to gently remind you of the fact that the

## Hotel Osburn

is by right of tradition, but not only that, the best place to stage your "one big dance" of the year.



## More Than 1300 New Customers This Year

We are now extending the benefits of modern electric service to more than 1300 new customers each year. To reach and serve them requires a large amount of new property construction.

In order to obtain new capital for the extensions and improvements required by the public, the Company pays a reasonable rate of return to investors.

An investment in our **8 per Cent Gold Notes** is one of the best investments you can make. It means a dependable income as regularly as the seasons four times a year.

For Cash or Partial Payments  
**Mountain States Power Co.**  
Byllesby Engineers and Management Corporation  
Engineers and Managers

Invest Direct  
In Your Community's Growth