

EXPRESS YOUR DOUBTS SAYS MISS BLANCHARD

RELIGIOUS TANGLES RESULTING
FROM CLASS DISCUSSIONS
IS TOPIC

Advise Free for All Discussion by
Groups to Clear Up Moot
Questions

Miss Leslie Blanchard, of the National Y. W. C. A. Board, who has conducted week-end meetings here in the interest of the local Y. W. C. A., left yesterday morning. She is to rest two days in Portland, and will go from there to hold similar meetings in Newberg.

Miss Blanchard spoke at the Bungalow yesterday afternoon about religious tangles arising out of classroom discussions.

"College discussions open up so many ways of looking at life. It is a slow business to get your minds straightened out and decide what you really do think. Professors either confuse, make you mad, or have no effect on you. If a teacher cannot stir you up and make you think, he is a poor instructor.

"The trouble is that most of you come to college with a religious creed that is buttoned with a safety pin. When the professor corners you on a religious question the pin comes unfastened and you are lost. Stand still until your doubts settle. You are in the same predicament as the man lost in a desert sand storm or a London fog. If you move you are lost."

Miss Blanchard stated that a free for all discussion group had cleared up doubts in some of the colleges.

"Get a group of fifteen or so and meet with a town minister or a professor. Talk your doubts out. Don't stop reading your Bible and going to church merely because you are in doubt. If a scientist has a problem he experiments hours in his laboratory until it is solved. Experiment in the laboratory of God and work out your troubles. Try the laboratory method of prayer.

"This one prescription I would leave with you for your doubts: Live up to what you now understand, then you will find the solution to what you do not understand."

ELEVEN FORMER STUDENTS ARE FOREIGN MISSIONARIES

There are now 11 former University of Oregon students working in the foreign mission field. Of these, probably the best remembered are: Clarence Steele, '11, a member of the Student Body Executive Committee, and the Treasurer of the Junior class and the Y. M. C. A. in 1910; and James Lyman, who, during his stay at the University, was Northwest champion heavy-weight wrestler.

The list of missionaries from Oregon, with their stations, is as follows: Japan—G. W. Hill, Harvey Wheeler, Ruth B. Wheeler. China—Peter Wold, Mark Wheeler. India—Carl Ghormley. Siam—Clarence Steel. Africa—Herbert Moon, Ennis. Mexico—Chary Applegate. Turkey—Jim Lyman.

DOUGHNUT BASEBALL SCHEDULE IS OUT

Preliminary Games Will Begin Soon,
but Semi-Finals and Finals
Come After Vacation

Preliminary Schedule

- * 1. Beta Theta Pi vs. Kappa Sigma.
 - * 2. Sigma Chi vs. Iota Chi.
 - * 3. Dormitory Club vs. Phi Delta Theta.
 - * 4. Phi Gamma Delta vs. Delta Tau Delta.
 - * 5. Sigma Nu vs. Oregon Club.
 - * 6. Alpha Tau Omega.
- Semi-Finals
* Winner of matches 1 and 5.
* Winner of matches 2 and 6.
* Winner of matches 3 and 4.

Floyd Westerfield. Next the "Doughnuters" will be the attraction on the baseball diamond. New and commodious bleachers are being erected, the grounds are receiving attention, and by next Monday, when the preliminaries begin, everything will be in shape for the first serious series of the season.

The semi-finals and finals will not be played until after spring vacation. It is hinted that the boys will need the vacation to rest up after the first week's grind of the strenuous sport.

Already many of the famous "house stars" have been noted clouting the ball on the lot back of the house, or chasing grounders for blocks down the pavement. Dark horses and finds will probably be numerous, as will also be the number of "homers" and sensational triple plays.

By a process of elimination, Coach Bezdek will select twelve or fourteen men who will have to forego the joy of a regular game until the vacation week, when they will make the up-valley trip. The men on this list will receive the announcement personally from Coach Bezdek.

The trophy for the winners of the games will be a cup, put up by the Inter-Fraternity Association. The Phi Gamma Deltas won the cup last year.

1915 Y. M. C. A. CONFERENCE TO BE HELD AT SEABECK

The Northwest Y. M. C. A. conference for 1915 will be held June 11 to 21, at Seabeck, Washington, a summer resort about 50 miles north of Seattle. This is one of the five main Y. M. C. A. conferences held in the United States. All except the California conference, which was held in January, will be in June.

A number of men are already considering attending. The total expense, including round trip fare from Eugene, will be \$26.

One of the four columns, relics of the first building of the Territorial University of Washington, erected in 1863, and brought to the campus by the Senior class of the University of Washington in 1911, was broken when a huge fir tree was hurled against it by a falling wind. An effort will be made to restore the fragments.

CO-ED HOCKEY GAME WITH O. A. C. APR. 2 OR 3

First Contest Between Women of the
Two Institutions to be at
Corvallis

In answer to the challenge of the O. A. C. girls' hockey team, the University of Oregon women will play them a game April 2 or 3, at Corvallis. This is the first time there has ever been a contest between the women of the two institutions in anything but tennis.

"Though the O. A. C. team has been practicing all winter and is ready for a game now, and we are just beginning to practice, I see no reason why we cannot win or at least hold them down to a tie score if our women will come out and work. The O. A. C. team has been practicing three times a day, but I think twice a day will be enough for us," said Miss Harriet Thompson, of the Women's Gymnasium Department this morning.

"Come and arrange your hours of practice with Miss Goldsmith. Come out and help defend your college. This is the chance of your college career to show your mettle."

DOCILITY GETS THE "H" BRAINS "M" SAYS PROFS.

(Continued from page 1.)

most of the men by the exact feminine standard, for it serves as a very fair indication of the amount of work they do, if not of the amount of brains they possess."

FAIR ARCHITECTURE AFFECTS CITIES IS BELIEF

(continued from page 1.)

stated that it was the central motive of the group, and explained that its wonderful color effects were achieved by the use of thousands of prisms, so placed as to secure a special refraction of the light.

"In each of the great expositions held in the past," the speaker said, "some detail has been emphasized. In the Panama Exposition no effort has been made to give prominence to any feature. But if any one department does stand out, it is the color. The coloring is simply marvelous, and when the varied hues are all combined in one complete whole, it fairly sings. Another very striking feature of the Exposition, is that, when the buildings are artificially lighted at night, no filaments are seen.

"The San Diego Exposition is quite as charming in its way as the Panama Pacific Exposition," continued the speaker as some views of the contemporary fair were shown. The most striking thing about this Exposition is the luxuriance of vegetation seen everywhere. In the main, Spanish architecture is employed.

The new budget of Columbia University totals \$3,987,350. This is Columbia's largest budget and exceeds that made at any university.

University of Michigan will soon hold an indoor track meet, entry in which is open only to non-athletes. All prizes will be edible.

PORTLAND PAN-HELLENIC UN- ION TO GIVE BENEFIT

The Pan-Hellenic Society of Portland will give a fete in Cotillion Hall in Portland on the evening of Friday, April 16. The proceeds will go into the Pan-Hellenic scholarship fund. The evening's entertainment will consist of original stunts, interspersed with dancing. Also, at a number of booths dancing programs, punch and candy will be sold.

An admission of 50 cents will be charged at the door.

Miss Fox, Northwest Field Secretary of the Y. W. C. A., who arrived on the campus Monday and was here until Tuesday morning, was at home to the girls of the University at the Bungalow Monday afternoon.

MILLINERY PARLORS

MRS. RUTH McCALLUM-CARTER

FISHHATS A LEADER

Room 22 over 1st National Bank



EXCLUSIVE AGENCY

De Luxe

Ring Books

Corner Ninth and Willamette

CHAMBERS Hardware Co. Hardware and Furniture Paints, Oils and Glass

742 Willamette Street
Phone 1

5 FOR YOUR DOLLAR

Beautiful College Pennants
YALE AND HARVARD
Each 9 1/4 x 24 Inches
PRINCETON, CORNELL,
MICHIGAN
Each 7 x 21 Inches
4—PENNANTS, Size 12x30—4
Any Leading College of
Your Selection

All of our best quality, in their proper colors, with colored emblems.

Either assortment, for limited time, sent postpaid for 50 cents and five stamps to cover shipping costs.

Write us for prices before placing orders for felt novelties of all kinds.

729 Bittner St.,
The GEM CITY NOVELTY CO.
Dayton, Ohio.

SPECIAL

Assorted
Caramels

40c lb.

Varsity
Sweet Shop

Chinese Noodles' House

Everything in Chinese Noodles
10:00 a. m. to 1:00 p. m.
63 Sixth Avenue East

Hotel Osburn

The Pride of Eugene
Student's
Luncheons
and Banquets
A Specialty
Sunday Evening Dinners
A Specialty

THE WATER PROBLEM

Solved at Last

Install a pump and drive it
with electricity

Oregon Power Co.

MY BUSINESS IS
FIXING SHOES RIGHT
Jim "The Shoe Doctor"

COTRELL & LEONARD
ALBANY, NEW YORK

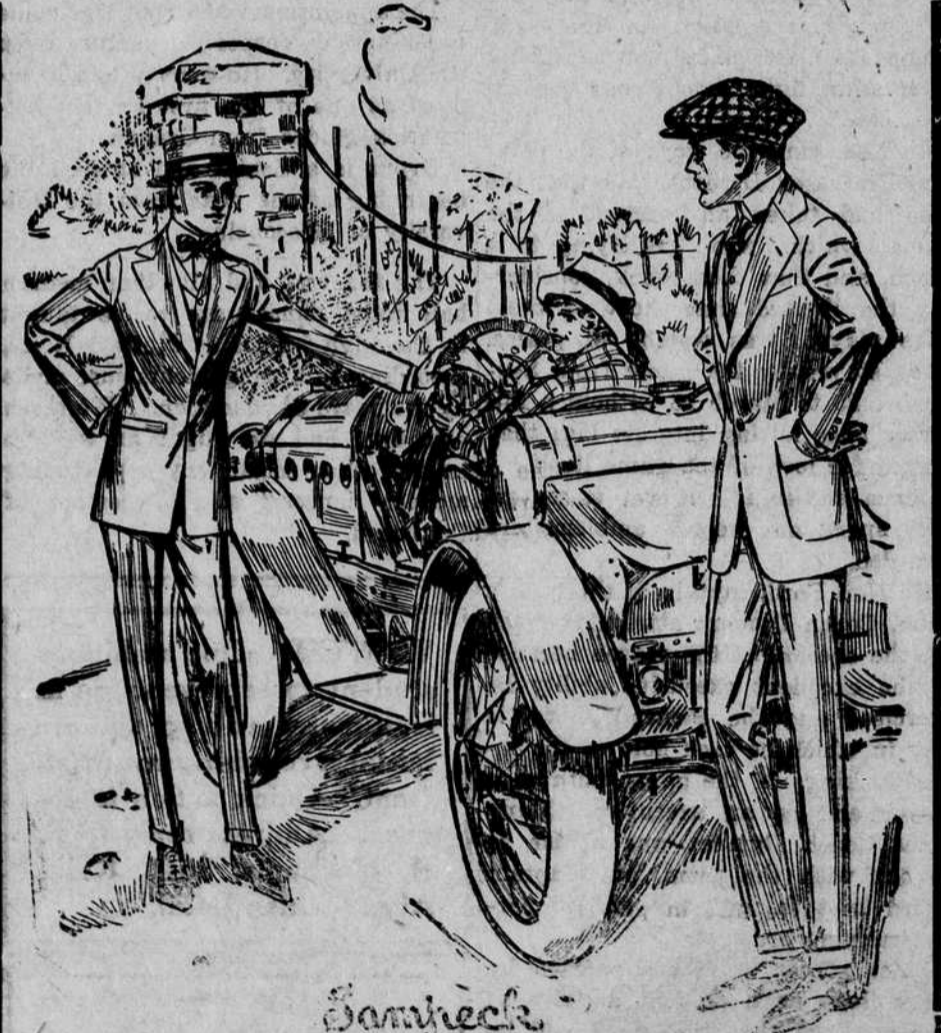
MAKERS OF
CAPS, GOWNS and HOODS
TO AMERICAN COLLEGES AND UNIVERSITIES

Class Gowns a Specialty. Correctness
Guaranteed. Rich Gowns for higher
degrees for pulpit and bench

BURGESS OPTICAL CO.
EXCLUSIVE OPTICIANS
OF WILAMETTE ST.

L. J. Friendly & Co.

— THE LEADING STORE —



Sam Heck
Wholesale Dealers

April Fourth is Easter

Get ready for it now. We are showing
the above models in a variety of
clever fabrics.

Weber & Heilbronner hats for
Spring are on display



Scenes from the Greatest Laughing Success, "Potash and Perlmutter," at the Eugene Theatre, Thursday, Apr. 1