

WOMEN'S SCOPE

IS NOW WIDER

(Continued from first page.)

piled a pamphlet of questions and answers concerning the University, which have been distributed throughout the State to aid in fighting the Referendum. The membership in this club is open to all women interested and includes the greater part of the women of the Faculty and Student Body.

Association Includes All Athletics. The Women's Athletic Association, which includes all forms of women's athletics, is planned to include all the Co-ed campus athletics now existing, as well as introducing several new ones.

Triple-A is also new this year. It is composed of the girls of the Freshman class and has as its purpose the bringing of the girls together. In carrying out its aim, that of promoting acquaintance, athletics and art, it has held several picnics, early morning tramps, and many informal meetings. It, however, will be disbanded at the close of the semester, as its activity is included in that of the Women's League.

The Women's League is the last but greatest of the women's organizations. It was founded during the past semester and will include all other organizations and activities. It is composed of all the women of the University. It has as its aim the union of all the women and is a central organization for all others. Its present work and ambition is to raise funds for a "Women's Building," to be erected on the campus and which will be the headquarters for all co-ed activities.

The Pan Hellenic Association has also taken several steps forward. Rules have been passed prohibiting the initiation of Freshman girls during the first semester; simplifying the evening dress of the Freshmen. Informal teas have been held during the year, and the first Pan Hellenic dance was held in the Gymnasium early in the second semester. Two new members joined during the winter, making a total membership of six.

Baggage Transfer, call 765.

YERINGTON & ALLEN

Prescription Druggists

Phone 223 40 East Ninth St.
When needing portraits, try

DUNN'S BAKERY

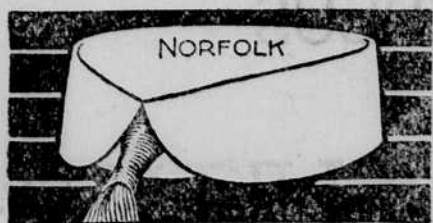
BREAD, CAKE AND PASTRY

Dunn & Price
Phone 72 30 East Ninth

Berry's Shining Parlor

640 Willamette

Grateful for Student Patronage



NORFOLK a New **ARROW COLLAR**

2 for 25 cts. Cretti, Peabody & Co., Inc., Makers



Corner Ninth and Willamette

Webster Kincaid

REAL ESTATE

152 East 9th Street, Eugene, Ore.

EUGENE

STEAM

LAUNDRY

Phone 123 West Eighth St.

Hotel Osburn

W. F. Osburn, Prop.

MODERN AND UP-TO-DATE

Rooms en Suite or Single

Dining Room Popular with Students of U. of O.

Yours Solefully for a Better Understanding

Jim, the Shoe Doctor
640 Willamette

Havana Cigar House, next door to Eugene Theatre.

Manila Cigars at Obaks.

"BLUE BELL" ICE CREAM

THE REAL THING

Real, because it is made from real, genuine, sure enough cream—the kind we always have plenty of.

Eugene Creamery
Phone 688.

College Ice Cream and Punches

For Particular People

Phone 343.

Eugene Ice and Storage Co.

If you have a Suit to clean or press, telephone 392.

Imperial Hatters and Cleaners

Tel. 392. 47 East 7th Street.

Opened to Corvallis The Oregon Electric Railway

Limited and Local Trains. Faster time to Salem and Portland



Observation Parlor Cars on Limited Trains

Sleeping Cars on Owl Trains

First Class Coaches on All Trains

	Limited.	Local.	Limited.	Local.	Owl.
Leave Eugene.....	7:35 a. m.	11:15 a. m.	1:45 p. m.	6:00 p. m.	12:01 p. m.
Arrive Corvallis.....	9:00 a. m.	12:50 a. m.	3:05 p. m.	7:55 p. m.
Arrive Albany.....	9:00 a. m.	12:45 a. m.	3:00 a. m.	7:45 a. m.	2:00 a. m.
Arrive Salem.....	10:00 a. m.	2:00 a. m.	4:00 p. m.	9:00 p. m.	3:30 a. m.
Arrive Portland.....	11:35 a. m.	4:00 a. m.	5:35 p. m.	11:00 p. m.	6:50 a. m.

Through tickets are sold, baggage checked, and sleeping car accommodations made to Eastern destinations.

Thought tickets are sold to points east and north of Portland. Fares, schedules, and other details will be furnished on request.

W. D. SKINNER, Traffic Manager, Portland, Ore. H. R. KNIGHT, Agent, Eugene, Ore.

THE CLUB

BILLIARDS

Bigger and Better than ever

J. J. McCORMICK
8th and Willamette

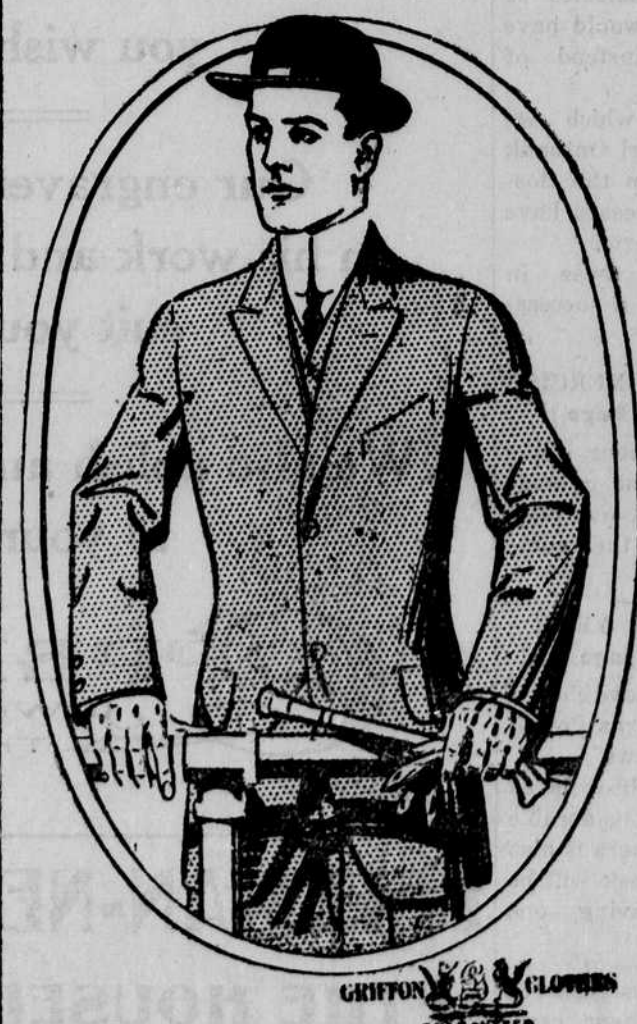
1st National Bank

Capital and Surplus \$275,000

Wants Your Banking Business

T. G. HENDRICKS, President.
P. B. SNODGRASS, Vice-President.
LUKE L. GOODRICH, Cashier.
DARWIN BRISTOW, Asst. Cashier.
RAY GOODRICH, Assistant Cashier.

S. H. Friendly & Co.
The leading Store



YOUR Spring Suit IS HERE

We have just received our New Spring Suits and Furnishings. The styles and patterns are the finest ever shown in Eugene.

Cottrell & Leonard
Albany, N. Y.

Makers of **Caps, Gowns & Hoods**



To the American Universities from the Atlantic to the Pacific. Class contracts a specialty

C. W. Crump

Dealer in Staple and Fancy

Groceries Fresh Vegetables

20 East Ninth St.

Phone 18

See **Preston & Hales**

For Cook's Wax, Floor Polish, Paints, Stains and Varnish

Baseball scores at Obak's.



Quality Jewelry for the Girl Graduate

TO THE YOUNG GIRL, leaving high school, grade school, or the university, graduation means something—and it should be perpetuated in her memory by some gift that will last her life through. Nothing has the same enduring qualities or is so welcome to young girls as some article of jewelry. And nowhere else in Eugene can you get jewelry with the quality and exclusiveness that is always in whatever article leaves our store.

This establishment carries the most modern and complete stock of jewelry in Eugene, and you can select your gifts here with the assurance that you are buying economically. Make your selections early.

SETH LARAWAY, THE LEADING JEWELER