

# Text Of Hatfield's Address To Solons At Special Session

SALEM (UPI)—The text of Gov. Mark Hatfield's special address to the legislature: Mr. President, Mr. Speaker, members of the Assembly: This is a day set aside to honor our veterans. Many of them made the supreme sacrifice in behalf of the American dream. We do well to enter these deliberations in a spirit of sacrifice and service which will win the approbation of those for whom our veterans fought. We are met to respond to the expressed will of the people for whom our authority is derived. The revenue program passed by this body at its regular session, which reached my desk a fortnight after you had adjourned sine die, has been summarily and decisively rejected under Oregon's unique processes of citizen participation in the law-making procedures. The proposal which went before the people was the product of no individual. It was disliked for many reasons. It was opposed in referendum even by some of you who answered the roll as the roll was called during the regular session. It was backed in referendum with some reluctance by some of us who wanted no part of it en route to enactment. But it is not for us here assembled to dwell on the past. The fruits of your previous efforts have been voided by those to whom we owe final responsibility. The action of the voters has been subject to various and conflicting interpretations since the ballots were counted October 15. To some it has seemed an open invitation to sales tax. To some it has been viewed as a vindication of those of us who urged a cigarette tax. To some it is the result of a mounting tide of resentment about the expansion of government and the weight of taxes at every level—Federal, state and local. You and I know that, prior to your convening last January, I had pruned agency appropriation requests by \$90 million. The expected hue and cry for increases was heard, but you withstood the pressures. You and I know that you rejected my tax recommendations and declined to direct to the people an election opportunity in mid-session so that their reactions might be known. You and I know that two-thirds of our \$1.3 billion budget is earmarked, removed from significant executive fiscal control. You and I know that, of the \$404.3 million general fund budget, \$135.1 million is for basic school support and is not subject to executive adjustment. With the expression by the people, then, and in accord with the constitution and statutes requiring that the budget be balanced, I immediately implemented stringent allotment adjustments. There was no alternative. My recommendations to you, in these circumstances, are: (1)—To authorize the executive department to modify basic school support allotments as conditions warrant and in accord with requirements for other budgets. It may be your preference to modify the allowance per student as well in recognition of the fact that further adjustment could be required in 1965-67. (2)—To place a moratorium on yet unlet capital construction contracts, except to meet the requirements imposed by court commitments of wards to our correctional institutions. (3)—To authorize a speed-up of the payment to the state of income taxes withheld by employers. (4)—To undertake no subjects at this session which are not directly related to our fiscal picture. (5)—To be aware the vast majority of the people expect no new taxes from this extraordinary session. To interpret last month's election results as a demand for a new tax is to misread the intentions of those we serve. (6)—To recognize that there will remain the uncompleted task of tax reform which must be faced squarely by the 1965 regular session. As we discharge our respective responsibilities may we have the wisdom to recognize the functions for which there is greatest need. Ways must be found to assure that the sustenance of life be provided those unable to care for themselves. Opportunities for an education to the capacity of one's mind and inclination should forever be a goal in our society. Let us resolve here together that we will so meet the chal-

# The News-Review

SECTION A Roseburg, Ore. TUESDAY, NOVEMBER 12, 1963 ★★ 267-63

## Frenh Sailor's Beret May Replace Mrs. Kennedy's Famous Pillbox Hat

By GAY PAULEY  
UPI Women's Editor  
NEW YORK (UPI)—Is a copy of the French sailor's beret the next hat for Mrs. John F. Kennedy?  
Oleg Cassini, the first lady's "official" designer, in a sailor mood showed copies of the berets to go with the costumes in his spring and summer fashion collection. The berets are soft circles of fabric set at a tilt, and could, if adopted by Mrs. Kennedy, become the feminine head covering to replace her famous pillbox.  
Are paisley print silks also a next for Mrs. Kennedy? Cassini, previewing his collection for the nation's store buyers, showed brightly painted paisley silk blouses matched to paisley lining of suit jackets. One suit, white and collarless, and with a one-inch braid trim around neckline and down the front closing, he said he suggested it to his most famous customer. He did not say whether she had ordered it. The suit, cut on simple and slim lines, had single-breasted jacket with metallic button closing.  
Cassini was one of a number of pace-setting designers showing their new collections of feminine apparel which will be in the stores after the first of the year.  
Brass Buttons  
The designer's sailor mood carried to neat, brass-buttoned navy blue jackets worn with white fleece skirts.  
Cassini usually is an exponent of the figure-hugging dress with plunging neckline for after-five wear. He showed plenty of this type but, commenting that "saturation is the enemy of fashion," he moved forward to demure late day dresses with high rising white collars and dickey insets of white lace.  
The white collar, white cuff look showed in several of the spring collections. Philip Hultin, for instance, showed flattened layers of white organdy as prim toppers for sleeveless black and navy silk cocktail gowns. Instead, the arm covering is a long-sleeved, French-cuffed blouse. Typical was Rentener's costume consisting of sleeveless lemon yellow wool coat, plus slim-cut yellow wool skirt, plus the wrist-length sleeved blouse of lemon polka dots on a black background.  
Feathers. Designer-manufacturer Adele Simpson turned some poor chirper's brown and white feathers into a loosely fitting "cage" jacket topping a long white sheath formal.  
Monte Sano & Pruzan's designer Jacques Tiffau used feathers for headpieces and top long-stem evening dresses.  
Christian Dior-New York produced a long tea gown covered from neckline to hem with ostrich feathers in yellow and orange. Its improbable name: Gundrop.  
Color Splash  
Color. White and off-white on a popularity binge. The ever-present black and white combinations too, as in a series of abstract printed silk coat and dress costumes at Rentner's. But watch for a big splash of color too, with the orange and pink tones running several lengths ahead of the others. Harvey Berin, the manufacturer, had some promotional terms for the new shades—jelly bean pink (a hot pink-red), strawberry ice, and marmalade (for several hues of orange). Sleeveless coats and jackets.

# Space Agency Pospones 'Imp' Flight

CAPE CANAVERAL, Fla. (UPI)—The federal space agency has indefinitely postponed plans to launch a 138-pound satellite named IMP into a wide-swinging orbit around the earth. The agency said it was displeased with the results of a ground test on a third-stage motor. The shot had been scheduled for today. Informed sources said the delay could last as long as two weeks or more. The satellite is the first of a series of seven that U.S. scientists will use to measure and map so-called solar "winds"—high-energy waves of radiation that could kill astronauts on flights to the moon. The space agency said ground tests on the X-258 third-stage motor of the launching rocket "indicated that a spacecraft contamination condition may exist from exhaust... following burnout." A spokesman said this meant that under existing conditions there was a possibility the rocket motor could damage a part of the satellite—possibly its solar panels—in the flight into space. Officials said "changes in the separation sequence" would be made to eliminate the possibility. A new launch date was not set immediately.

Now You Know  
By United Press International  
The Protestant Cathedral at Ulm, Germany, is the tallest church structure in the world with a spire that soars 529 feet, according to the World Almanac.



**'64 OLDS** →  
**WHERE THE ACTION IS!**

Now there are three 88 series... and the new Jetstar 88 is the lowest priced of all!

Why settle for a fraction of the action... with three great new Olds 88s on the scene! Sample the Super 88... and its 330 horsepower's worth of Rocket V-8 response! Try the new Dynamic 88... Oldsmobile's popular-priced popularity star. (123-inch wheelbase and four-coil-spring ride are only a starter!) Now test-drive the Jetstar 88—newest, lowest-priced 88 of all. Along with "wow-winning" style, it sports 330 cubic inches of brand new Jetfire Rocket V-8! Which is for you? See your Olds Dealer!

\*\*\*\*\* VISIT YOUR LOCAL AUTHORIZED OLDSMOBILE QUALITY DEALER... WHERE THE ACTION IS! \*\*\*\*\*

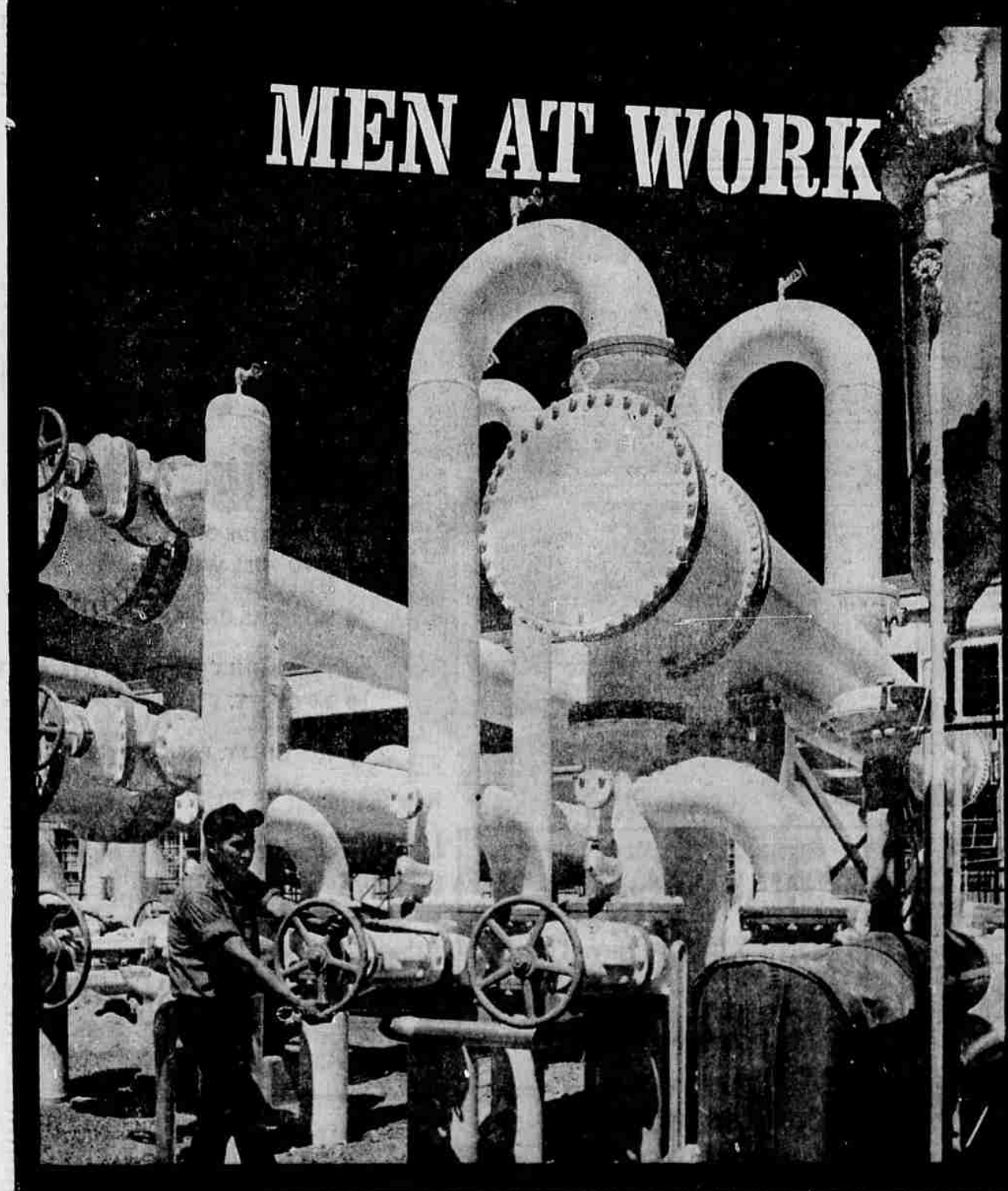
**RIVERSIDE MOTORS, 908 N. E. STEPHENS**

## LDS Church Schedules Showing Of Two Films

The Latter Day Saints Church in Roseburg has scheduled a pair of films Nov. 13 and Nov. 20, according to Robert Pritchard, bishop's counselor. The films were taken from the 20th Century television series library. To be shown Nov. 13 is "The Delinquents, Part II," the story of the rehabilitation of delinquents at Highfields, N.J. On Nov. 20, the film will be "First Man on the Moon" This is a report on the research taking place at the Aeronautical Systems Division of the Air Force Systems Command. The 20th Century films are available to all organizations free of charge by contacting the nearest Prudential Insurance Co. office.

## Weyerhaeuser's Strike Is Settled

COOS BAY (UPI)—A strike which has idled Weyerhaeuser Co. lumber operations in the Coos Bay area since the middle of last month was settled Sunday afternoon. Members of Local 3-261 of the International Woodworkers of America here accepted an agreement reached Saturday in Portland between union representatives and officials of the big timber firm. Ken Johnson, business agent for the local, said the vote was "overwhelmingly" in favor of acceptance. Details of the agreement were not disclosed. Work was resumed Monday at the company's operations at North Bend and Allegany. It will resume in the firm's woods operations in the area Tuesday morning. The strike was called because of union grievances over job classifications and wages at the Coos Bay area operations. About 1,000 workers were idled. Roving pickets periodically closed other Weyerhaeuser plants at Klamath Falls, Springfield and Cottage Grove in Oregon and Everett, Enumelaw and Raymond in Washington.



**to keep your home comfortably warm**

These heat exchangers, at left, cool natural gas after it has been compressed, as it is being sent from the fields to the local gas company that serves your home. This is part of the complex process by which natural gas is transmitted long distances to heat your home, cook your meals, supply you with hot water and furnish many services to business and industry. Employees and equipment of El Paso Natural Gas Company serve the 11 Western states, delivering 10 times the energy supplied by all federally financed electric power generators in the same area. The cooling process is one of many interesting steps along the way—from discovery of gas, through well development, processing, compressing, transmission and final delivery to your own neighborhood.\* It all adds up to a major industry, operating for the present and future benefits of the people it serves.

**EL PASO NATURAL GAS COMPANY**

Through its pipelines, El Paso Natural supplies wholesale gas service to retail natural gas distributors in WASHINGTON • OREGON • IDAHO • ARIZONA • CALIFORNIA • COLORADO • NEVADA • NEW MEXICO • TEXAS • UTAH • WYOMING

\*In Oregon retail gas distribution companies are: NORTHWEST NATURAL GAS COMPANY • CASCADE NATURAL GAS CORPORATION • CALIFORNIA-PACIFIC UTILITIES COMPANY

**ENERGY FOR THE WEST**