

Rhododendron Ridge Road Links Umpqua Drainages

This is another in a series of travel tour articles featuring Umpqua National Forest scenic attractions and points of interest which can be viewed by motoring on the forest's good mountain roads on afternoon or day-long tours. Today: Tour No. 2—The Roseburg-Tiller trip.

By FRANK TERBUSH
Umpqua National Forest
Recently we checked road conditions to Tiller via Quartz Mountain. A slightly longer trip (154 total miles) is possible via the Rhododendron Ridge Road. This involves only 43 miles of good gravel road. The same rules and precautions govern for this trip as for that previously described in Tour 1.

Drive down to Tiller and take the road to the left at the Tiller Bridge. It is marked: "Camp Comfort 27 miles." You will leave the black-top 6.4 miles up the river, and enter National Forest land a mile beyond. Keep the South Umpqua River to your right as you proceed up this drainage.

Five miles beyond the forest boundary you will see the Dumont Creek Campground and two miles beyond this, the Boulder Creek Campground. Just beyond the Boulder Creek Campground (0.4 miles) there is a sign marking Campbell Falls Viewpoint. These falls commemorate a forest worker killed early in World War II.

Salmon Can Be Seen
The South Umpqua Falls and

Campground are 20.2 miles up the river from Tiller. A fish ladder here permits salmon to make their way around the falls to the spawning beds beyond. Nine-tenths of a mile beyond the falls there is a deep hole where a number of salmon can be seen spending the summer while awaiting the fall spawning season.

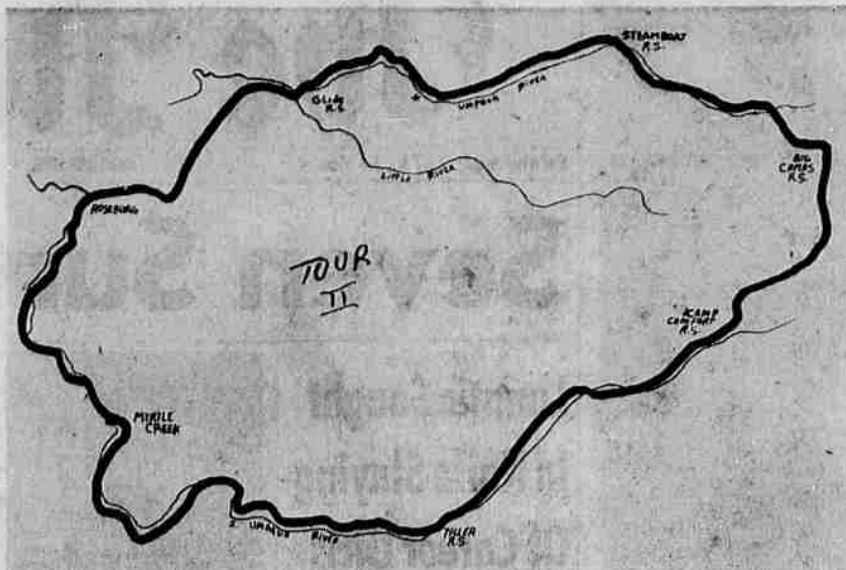
Six miles upstream from the falls you will find Camp Comfort. There are camping and picnicking facilities, in addition to the guard station where a small fire-fighting crew spends the summer.

The road leaves the river at this point and commences climbing toward French Junction. This important road junction was the goal of Forest Service personnel for many years as they sought to improve access throughout the forest. It serves as an important link between the North and South Umpqua drainages. A third road now comes in to permit easy access to Little River as well. The junction itself is 12.4 miles up the ridge from Camp Comfort.

Travel Ridge Road
At the junction, proceed straight ahead on the Rhododendron Ridge Road. Flowers along this ridge are gorgeous in the spring and some are blooming well into July. Be sure to take advantage of the superb view of snow-capped Mt. Sully and Mt. Thielsen as you go over this stretch of road which terminates at the Copeland Creek-Big Camas junction 7.7 miles beyond. You are 57 miles from Roseburg at this point. Turn left and drive the 7.3 miles down the ridge to the North Umpqua Highway and black-top pavement once more.

Five campgrounds await your pleasure between this junction and the National Forest boundary 21.2 miles downriver.

The boundary is 40.9 miles from the corner of NE Stephens St. and NE Diamond Lake Blvd. in Roseburg. This trip, of course, can be made in either direction from Roseburg. It was described from the Tiller end simply because the roads were checked from there.



TRAVEL TOUR NO. 2 takes the motorist on a scenic excursion through Douglas County's vast timberland. This trip, as map illustrates, makes the Tiller-Roseburg loop via Quartz Mountain.

TV Camera Records What May Be Body Of Bova Trapped In Mine

By MYRON FEINSLBER
SHEPPTON, Pa. (UPI) — A television camera lowered in search of miner Louis Bova, trapped for 16 days, recorded early today "what looked like the entire body of a man," according to H. Beecher Charnbury, state secretary of mines.

The camera, Charnbury said, was lowered into the escape hole through which David Fellin and Henry Throne were dramatically rescued early Tuesday.

The Aug. 13 cave-in which imprisoned all three miners had trapped Bova separately from the other two, and they said they had not heard from him since Aug. 20 but Charnbury said it was possible Bova had come into the chamber since Fellin and Throne were rescued.

The camera, according to Charnbury, recorded what "looked like the entire body of a man — a miner's hat, head, shoulders, arms, legs and boots." The form, he said, appeared to be in a sitting position against a wooden post.

However, Charnbury emphasized that the findings of the camera were not conclusive. "It appears to be a man's body," he said. "We are by no means sure of this."

He said further pictures were being taken and that a volunteer might be lowered into the hole today. Whether to send one of more than 20 volunteers down was to depend on the hazards involved and the scrutiny of pictures.

Originally it had been planned to take pictures down another hole, 22 inches wide, reamed down Thursday to the presumed location of the 32-year-old Bova.

"There's a man down there," Thus did 21-year-old William Unger, one of the volunteers, explain his willingness to go down after Bova. Unger said he did not know Bova, but "that doesn't make any difference—not to me, it doesn't."

Unger, a slender six-footer who weighs a wiry 150 pounds, quit high school to go into the mines at age 15. Of his young wife Marie, mother of his baby daughter, Unger says that his volunteering is "okay with her."

"Sure she's worried, but she always worries when I'm in the mines."

Unger thinks Bova is alive, though chances for his survival are conceded slim by almost all observers here. He said his only worries on going down would be gas and black damp—a lethal combination of coal dust and carbon monoxide.

A 3-inch-wide drill probe to Bova's presumed location has been has not yet been finished.

Controversy continued Thursday over a contention by David Fellin, who was dramatically rescued with Henry Throne early Tuesday, that they should have been brought out after 5 instead of 15 days.

Fellin, a co-owner of the mine, had told newsmen that rescuers should have dug through the old mine shaft, instead of drilling new probes to the two men.

Officials Take Issue
The three leaders of the rescue effort look immediate issue with Fellin's statement. Gordon Smith, deputy state director of mines, said it was partly Fellin's fault that the mine caved in.

"The miners in this operation were removing pillars of coal," Smith said. "Fellin showed he doesn't know all there is to know about mining by getting himself in this predicament."

The mine, abandoned in 1929, had been worked again sporadically since 1950. Smith said Fellin was "taking out coal pillars left all those years" to support the mine.

Resent Criticism
Clyde Machamer, president of the Independent Miners Association (IMA), said rescue workers who had risked their lives to save Fellin resented his criticism of the rescue.

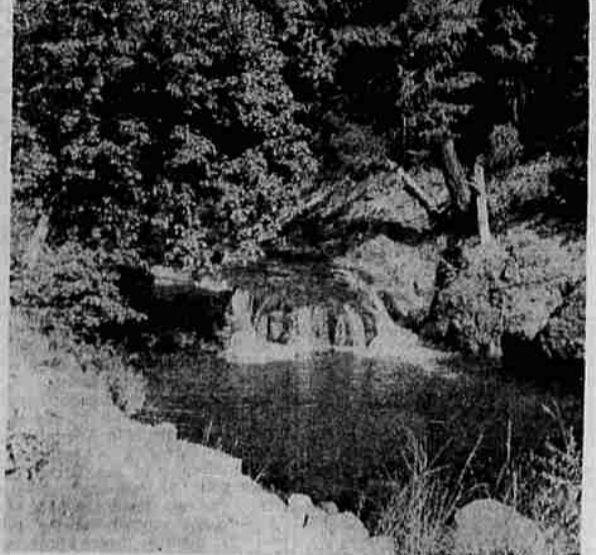
"The man should have been entirely grateful," Machamer said. "I don't understand it—neither do I care much. The important thing is that these men are up. Now we hope for a third miracle—to bring up Bova."

"Certainly there is deep resentment among the workers who worked so hard to effect the recovery of the collapse. . . . You have to explain to them that these men (Fellin and Throne) are under duress and don't know the condition of the shaft."

Dr. H. Beecher Charnbury, state secretary of mines, said Fellin's statement had depressed morale among the rescue workers, and confirmed that some volunteers had left the site.

But Eugene J. Gibbons, partner with Fellin in developing the mine, said he thought Fellin had "been subjected to interviews and made statements without having all the facts and in a tired, weakened condition."

Gibbons added, "I have not been permitted to see him to tell him of the stupendous effort made to save him. . . . I think I am better qualified to speak for the partnership. . . . and I repeat my words of praise for all who helped in the rescue effort."



THE ROSEBURG-TILLER auto trip through the Umpqua National Forest affords spectacular views of timbered mountains and cascading streams. Photo above shows a small waterfall on the upper reaches of the South Umpqua River.

Wirts Calls For Neutral Arbitrators To Discuss Issues In Railroad Dispute

WASHINGTON (UPI) — Labor Secretary W. Willard Wirtz has begun the job of bringing rail union and management representatives

together for arbitration of the work rules dispute ordered by Congress. Wirtz wired both sides Thurs-

day to select neutral arbitrators by Thursday. The arbitrators will take up the two main issues on the dispute — firemen and train crew makeup.

Under legislation approved by Congress Thursday, three neutrals will join two representatives apiece from the unions and the railroads to write the decision.

Wirtz Schedules Meeting
Wirtz asked both sides to meet on Sept. 6. The rail unions have not announced their representatives as yet. The railroads named J. E. Wolfe, chief negotiator during the past bargaining, and Guy Knight, a vice president of the Pennsylvania Railroad and former chairman of the Eastern Carriers Conference.

In case union and management, as is expected, cannot agree on the neutral arbitrators, the law provides that they will be named by President Kennedy.

Wirtz said to be considering the names of several well-known figures for the chairmanship of the seven-man board, but no decision was reached on its make-up in case the President must step into the deadlock.

Under the law, the arbitrators will decide the question of displacing firemen on freight and yard diesel locomotives and the reduction of train crew sizes, both of which were requested by management.

S. Carolina, 'Bama Schools Integrated For First Time

By United Press International
Negro students today inaugurate the first public grade school desegregation in history in South Carolina and Alabama.

Three Negroes register to attend two white high schools in Charleston, S. C., and 13 Negroes enroll for classes at a white high school in Tuskegee, Ala.

Authorities anticipated no trouble in either city. Classes begin Tuesday in Charleston and Monday at Tuskegee.

City schools at Memphis, Tenn., begin their third year of desegregation today but Shelby (Memphis) County school officials refused to disclose integration plans for the opening of their schools Tuesday.

At Mobile, Ala., school officials worked on the applications of two Negroes for transfer to a white school, Negro attorneys, meanwhile, said they would appeal the Mobile school board's grade-a-year integration plan on grounds it fails to comply with a federal desegregation edict.

Around 200 Negroes, thwarted by police in an attempted anti-segregation march on the Williamston, N.C., city hall Thursday, threw bricks and rocks through the windows of several business firms. Sheriff Raymond Rawls called in extra police to help control the "unruly mob" and arrested 11 demonstrators.

White and Negro children engaged in a rock-throwing melee in a theater at Smithfield, N.C., Thursday, and police said several youths suffered lacerations.

GO BACK TO SCHOOL - With A --- Conn Band Instrument

USE OUR RENTAL PURCHASE PLAN
ONLY \$5.00 PER MONTH

It Costs No More To Buy The Best!

GOOD BUY
STATE FARM INSURANCE
GOOD GUY
FOR AUTO, LIFE & FIRE INSURANCE
NORM WICKS
978 N.E. Stephens 673-6233
In the Hillcrest Motel
STATE FARM Insurance Companies
Home Office: Bloomington, Illinois

REYNOLDS RUSHTON Music
516 S. E. Jackson Phone 672-1621



Best Selling Cadillac Of All Time! Month after month since its introduction, the 1963 Cadillac has established new sales records. The reasons are dramatically evident when you combine an inspection with a personal evaluation at the wheel. Do it at your earliest opportunity.

VISIT YOUR LOCAL AUTHORIZED Cadillac DEALER
ROSEBURG MOTOR CO.
ROSE & WASHINGTON STS. ROSEBURG

Slaying Of Young Career Girls Was Crime That Shocked A City

By GAY PAULEY
UPI Women's Editor
NEW YORK (UPI)—They come by the thousands each year to New York. They arrive just out of high school or college, young, eager, and hopeful of what the big city possesses, glamour, career, excitement, challenge.

They add up to twos and threes to afford a neat apartment in a nice neighborhood in those first months in big, frightening, competitive New York. They take jobs as secretaries, receptionists, models, researchers—marking time as they pursue a special design.

These thousands are the young career girls who in most instances are swallowed into the anonymity that the city of eight million persons prescribes except for the rare few. Then, these blaze forth in a few years as business executives, as designers, as names in lights on Broadway. Or sometimes, with tragic suddenness, as names in headlines when murder is done.

Two Die Violently
Murder happened for two of those hopefuls this week, with the slaying of Janice Wylie, 21, a green-eyed blonde with a promising career in acting ahead, and Emily Hoffert, 23, who in early September was to start teaching in Valley Stream, N.Y., a Long Island suburb.

The two died violently in a four-room furnished, \$250 a month apartment in one of Manhattan's "best" residential sections—the east 80's.

Three young women shared the apartment—the third, Patricia Tolles, 23, an employe of Time Magazine, apparently survived because she left before the slayer, or slayers, broke into the apartment, slashed two victims to death, then bound their bodies together with bed sheets. Miss

Wylie was the daughter of Max Wylie, author and executive with an advertising agency, and niece of Philip Wylie, the author. She was employed at Newsweek, but had studied acting and had done some summer stock.

Miss Hoffert came from a socially prominent family in Edina, Minn., an exclusive suburb of Minneapolis.

Crime Shocks City
The crime shocked the city. And it caused many a young woman and her parents to ask, how safe is life away from the immediate protection of the family? How safe the big town?

I asked Walter Arm, Deputy Police Commissioner of New York, to answer for parents and for the young women looking to a future in the nation's largest city.

"We cannot guarantee or insure safety," said Arm.

But he pointed to a Police Department analysis of an FBI report on crime nationally in 1962. Of the 25 most populated cities, New York ranked 18th in murder, 17th in forcible rape, 18th in robbery, 10th in aggravated assault and 20th in burglary.

Demo Leaders To Meet

There will be a meeting of the Douglas County Central Committee at 2 p.m. Sunday, Sept. 8, in the Douglas County Courthouse. All committeemen and Committee-women as well as other members and friends are urged to attend.

Preceding the meeting, the executive board will meet at 1 p.m. in the Coral Room of the Umpqua Hotel.

WIN \$450
THIS FRIDAY NIGHT BANK NITE
LAST WEEK
Name of winner for \$400.00
Sandy Lee Nordyke, 1557 S. E. Pine, Roseburg (Not Present or \$400)
Name of winner for \$25.00:
Robert C. Scott, 1057 N.E. Lincoln, Roseburg (Present for \$25)
Name of winner of Mystery Prize:
Esther M. Hall, P. O. Box 406, Canyonville (Not Present For Mystery Prize)
\$3771 has been given away already by Roseburg's Friday Night Merchants. You may be the Lucky Winner this Friday. (Eligible Only If In Store 5 Minutes)
SHOP DOWNTOWN EVERY FRIDAY NIGHT
Be at one of the following downtown merchants at 8 p.m. Friday night and you may win . . .
\$450.00 BANK NITE PRIZE
CLARK'S STUDIO
DIANA CRAIG
FOOD MART
88c STORE
WEISFIELD'S
WACK WEST JEWELRY
RICKETT'S
WOOLWORTHS
ROSEBUD CAFE
ROSEBURG PHARMACY
SANDER'S SHOE
SEARS ROEBUCK
LUVERNE'S
PAYLESS DRUG
REYNOLDS-RUSHTON MUSIC
HORN'S
A & CAFE