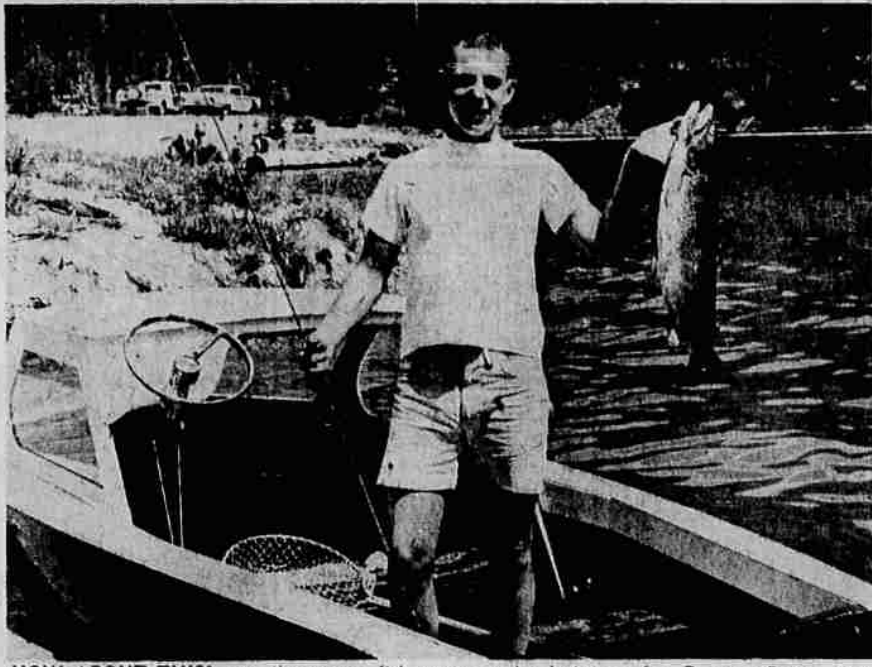




GENERAL STORE is shiny and well stocked. Here proprietor W. Kuhn serves Mrs. Arthur Selby of Glide as one of the first customers. The store is part of the Lemolo Lake Resort complex.



HOW ABOUT THIS! says the young fisherman as he hoists a fat German Brown trout caught in Lemolo Lake. The trout was 27 inches long and weighed 10 pounds. Fish biologist Jerry Bauer of the state Game Commission estimated age of the fish at eight years. (News-Review photos)

Lemolo Resort Opens For Occupancy Today

By MRS. ARTHUR SELBY

In a setting that only nature can provide, the new Lemolo Lake Resort, 75 miles east of Roseburg, will be opened to the public today.

Donald H. Wilson, Roseburg, the developer and owner of the resort, operating under a special use permit from the U.S. Forest Service, has an unusual and different type resort for his guests and visitors. The resort driveway and roads are paved with red cinders which come from a volcanic eruption in Kelsey Valley, eight miles from the lake. All buildings are of A-frame construction, Alpine type.

The lodge building contains a store, restaurant and lounge all in a single unit built in the shape of a "T." The restaurant has a large picture window facing the lake and an excellent view of majestic Mt. Thielsen. The restaurant will not be opened this year. The grocery store carries a complete line of foods, picnic supplies, fishing tackle and other items. Grocer W. Kuhn manages the store.

Four Cottages Ready
There are four housekeeping cottages now ready for occupancy. Each has a large picture window facing lake and pine trees offer seclusion for each unit. The living room has a hide-a-way bed which is a sofa in the daytime, a bedroom with double bed and a sleeping room in the loft with double bed, all of which provides sleeping accommodations for six people.

The showers, all in ceramic tile, have sliding glass doors. The kitchen has an electric refrigerator, range and stainless steel sink in one unit. The top of the eating bar is of formica and has six bar stools. All floors have asphalt tile coverings. Wilson provides bed linens, glassware, dishes, silverware, pots and pans in these housekeeping cottages. These, as well as the lodge, are air conditioned.

The utility building is completed, containing the public restrooms and an apartment upstairs for employees of the resort. One more housekeeping cottage to match these completed will be constructed in the fall. Also, five more cottages on the other side of the lodge which will not have the re-

frigerator, range, sink or the household supplies as previously listed in the former cottages, only the sleeping accommodations.

The service station will be completed this month. The boat dock and ramp will be built this winter when the level of the lake goes down. Both boat dock and service station will have apartments upstairs for resort employees.

A children's playground area is planned for spring to be equipped with swings, slides, teeter-totters and a wading pool.

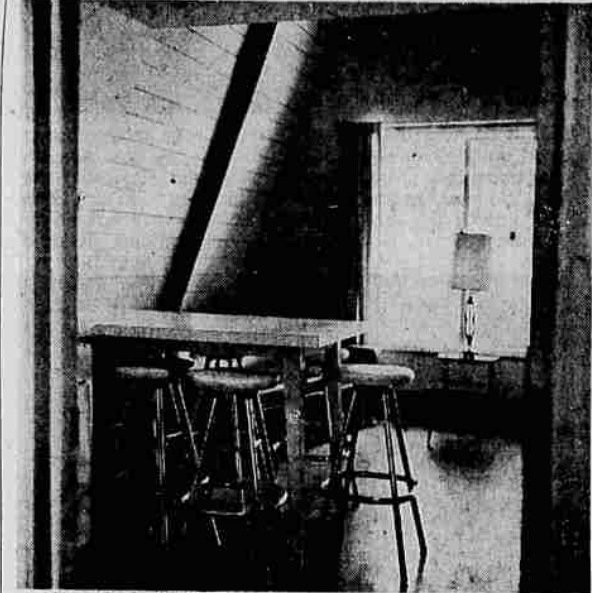
Recreation Offered
In addition to excellent fishing and water skiing the resort offers swimming, scenic hiking trails, hunting and a fine skiing area in the winter just across the lodge on Elephant Mountain, elevation 5,700 ft. with the skiing slope 7/10ths of a mile long. The Forest Service Poole Creek Camp grounds opened last year is three-quarters of a mile from the Lemolo Resort. The new Forest Service Inlet campgrounds opened this summer, located at the mouth of the North Umpqua river, is 2 miles from the resort.

Donald Wilson told the News-Review that the first of the year he estimated his cost of the road construction, buildings and equipment, would be \$78,000 but now when these latter buildings are completed, his investment at the 19 1/2-acre resort would run well over \$100,000.

Helicopter Crew Gets Forest Worker's Body

MOUNT SHASTA, Calif. (UPI)—A helicopter crew Thursday recovered the body of a U.S. Forest Service employee who fell 300 feet to his death down a glacier near the top of 14,161-foot Mt. Shasta. The body of Bill Mikm of Glennwalk, N. J., was brought to the Mt. Shasta Ski Bowl at 7,700 feet by a turboprop "copter" of the Hertzger Helicopter Service at nearby Etna.

Mikm fell Wednesday while climbing with Stephen Tellman. Both were employed at the Lassen National Forest in northeast California.



A-FRAME CABINS provide plenty of room for visitors at the Lemolo Lake Resort who really want to commune with nature. This is an interior shot looking from the kitchen into the living room.

Use Of Forest's Recreation Facilities Shows Mammoth Gain Over Previous Year

Recreation facilities in the Diamond Lake Ranger District are receiving approximately twice as much use as they did in 1962.

This is indicated in statistics prepared by the district and submitted to the Umpqua National Forest supervisor's office.

Why the big increase? Forest officials speculate it's due to the return of good fishing at Diamond Lake and the lack of World's Fair competition this year.

Whopping Increase
The Diamond Lake campgrounds received 38,452 "visitor days" of use from the start of the season to the end of July as compared to 20,527 for the same period last year. That's a whopping 92 per cent increase.

Attendance at the evening Forest Service programs conducted at Diamond Lake Lodge was totaled at 1,908 for the summer period

through July as compared to 596 in 1962.

Forest officials said contacts made at the Diamond Lake Information Center through the month of July totaled 3,772. Contacts last year for the same period amounted to 1,683. This represented an increase of 223 per cent.

And there appeared to be no slow-up in recreation use of the popular forest playground area in the current month.

Some Turned Back

Officials said it has been necessary to turn back prospective campers at Diamond Lake Campground on eight occasions because all units were filled. Last year a "full house" situation occurred on only one occasion.

Roseburg Man Arrested On Charge Of Assault

William Elvis Mask, 57, of 4220 Hooker Road, Roseburg, was arrested by Douglas County sheriff's officers Thursday night on a District Court warrant charging him with assault and battery.

The district attorney's office said Mrs. Sarah Cartner signed a complaint against Mask, charging the assault and battery against her took place Aug. 21. Mask was lodged in the county jail under \$500 bail.

Lake Is Holding Reservoir For Powering Generators

Lemolo Lake was originally constructed by the California Oregon Power Co. (now the Pacific Power and Light Co.) in 1954-55 under contract to the Morrison-Knudsen Co. and was finished in July 1955. The purpose of the lake is a holding reservoir for the company's power generators.

Lemolo Lake is formed by a dam 120 feet high and 885 feet long and covers 454 acres at an elevation of 4,151 feet. It has a depth at the deepest point of approximately 100 feet. Diamond Lake is 52 feet in depth. The lake is drawn down in the winter to 40-50 feet because of the water volume coming in from springs and rivers is greater than is required to produce power during the winter months, according to Don Tandy, U. S. Forest district ranger. Then in the spring when snow thaws in the higher elevations, the lake fills up again in March, April and May.

The fish population of the lake is managed by the Oregon State Game Commission. This year the Game Commission planted 100,000 trout and 93,000 landlocked sock-

eye salmon in the lake, according to Jerry Bauer, geologist with the Game Commission. It does not plant German Brown trout in the lakes and rivers of southwestern Oregon.

Bauer told an interesting story of how the present German Browns are in Lemolo Lake. These fish were planted in Maidu Lake in about 1950 at the head of the North Umpqua River and then dropped down out of the lake into the river below. When the dams were built and the lake filled up, this brought about the conditions causing the German Browns to flourish and build up the present population of this type fish in Lemolo Lake.

Bauer said the Browns are smart fish and hard for the average fisherman to catch, it takes a skilled angler to hook and land one of these fellows.

Subdivision Plan Gets County Group's Okay

The Douglas County Planning Commission Thursday night approved preliminary plans for the Forest Haven subdivision, located on Little River in the vicinity of Emile.

Calvin D. Willis plans 15 units in this first subdivision block, with two more blocks to be added in the ultimate development.

This subdivision is designed primarily as a recreational type of subdivision.

Minor Power Line Fire Hits Forest

The Umpqua National Forest had its first power line fire of the year this week, according to Homer Ott, fire official.

Ott said a "spot" fire occurred in the Diamond Lake area when a power line insulator broke causing electrical ignition of dry forest materials.

This fire was brought quickly under control, as were two other minor outbreaks occurring in the Umpqua this week. Ott said they were easy to control because they were caught "while still small."

He urged county residents to continue to be extremely cautious with the use of fire when camping or traveling through the forests. The other two "spot" fires reported to the supervisor's office were man-caused, he pointed out.

One of these—occurring in the South Umpqua Ranger District—was blamed on a berry picker.

Our Congratulations . . .
LEMOLO LAKE RESORT
Electrical Wiring by . . .
BARLOW ELECTRIC
710 W. Indianola Ph. 672-2496

Congratulations and Best Wishes
LEMOLO LAKE RESORT
Custom Cabinet Work and Formica by . . .
PAT'S CABINET SHOP
1052 N. W. Keasey Road Ph. 673-5446

ABOVE ALL . . .
a good roof by
ACME ROOFING CO.
C. B. SLOAN - OWNER
1567 S. W. GREEN AVE. 673-8255

CONGRATULATIONS
To Don Wilson
ON THE OPENING OF THE
Lemolo Lake Resort
It was our pleasure to have assisted in the opening of this fine new recreation facility.
Gerretsen Building Supply Co
Odell Street Ph. 672-2636

Excavating & Road Construction
for the new
LEMOLO LAKE RESORT
by
J. R. McALLISTER
Sewer & Excavating Contractor
1562 N. E. VINE 672-1021

- Industrial, Commercial, Residential Excavating
- Road Construction • Basements • Irrigation Ponds
- Log Pond Cleaning • Ditching, Sewer Work
- Sand & Gravel

BEST WISHES

to the developer of

LEMOLO LAKE Resort

WE WERE GLAD TO HELP YOU BUILD FOR HEALTHFUL RECREATION . . .

JAMES & STRITZKE
CONSTRUCTION CO.

Resort Operates With FS Permit

The Lemolo Lake Resort, which takes in 19 1/2 acres, is operated under a permit from the U. S. Forest Service and all the improvements belong to the developer or permittee, Donald Wilson of Roseburg.

Don Tandy, district ranger of the Diamond Lake District of the Umpqua National Forest, outlined the requirements of this permit lease.

For the first year, the Forest Service requires the construction of a general resort building which contains a store, restaurant, lobby, public rest rooms and living quarters for the people employed to operate the resort. Secondly, the developer has to construct the roads around the developed portion of the resort, must complete the clearing and clean-up of all developed portions of the resort and grade roads.

Gas and oil station facilities were constructed; boat dock and launching ramp installed and six rental boats were provided in addition by the developer.

The charge for this permit from the U. S. Forest Service is based on a percentage of the permittees' net receipts for a 12-month period of operation of the resort.

RHS Annuals Ready

Roseburg High School year books were being distributed at the high school library today beginning at 1 p.m. The library will remain open until 6 p.m. today for those wishing to come in, according to Donald Bodeen, faculty member in charge of year book distribution. Those students unable to pick up their books today may secure them on registration days Aug. 28, 29 and 30 or after the school opening on Sept. 3.

CONGRATULATIONS--
TO THE
Lemolo Lake Resort
A Beautiful Addition To Douglas County
Vance Plumbing and Heating
Phone 673-3856

Congratulations
to Don Wilson on the opening of
LEMOLO LAKE RESORT
KEN ATTERBURY
CERAMIC TILE CONTRACTOR
Winchester, Ore. 673-5387

Lemolo Lake Resort



Located On The Headwaters of The North Umpqua River

Grand Opening This Weekend!

Spend a Day - Weekend Or Your Vacation At This Beautiful Resort.
★ CABINS COMPLETELY FURNISHED



The Fishing Is Great!

WEEKLY PRIZE FOR THE BIGGEST FISH
Be Sure To Register Your Catch

- TACKLE
- BAIT
- BOATS
- GROCERIES
- RESTAURANT



- ★ CAMPING FREE CAMPSITES
- ★ WATER SKIING
- ★ HIKING
- ★ SCENIC BOAT RIDES
- ★ BOAT RENTALS



Phone 672-4392 For Your Reservations