

## Three Frieda Timber Salvage Tracts Sold By USFS

Three tracts containing a total of 3,540,000 board feet of Frieda salvage timber were sold Tuesday by the Umpqua National Forest. Largest of the three was the Trap Creek Salvage Sale located 70 miles east of Roseburg on the Diamond Lake Ranger District and containing 1,750,000 board feet of timber on 250 acres. Appraised price was \$24,552.50.

Round Prairie Lumber Co. of Dillard, the only bidder, paid the appraised price for the tract. The tract included 700,000 board feet of Douglas fir and western white pine appraised at \$22.55 per thousand and 1,050,000 board feet of western hemlock and other species appraised at \$8.35 per thousand.

**Sun Studs Is High**  
Sun Studs Inc. of Roseburg was high bidder on the Hi Rho Salvage Sale located 63 miles east of Roseburg on 36 acres in the Diamond Lake District. The tract contains 1,120,000 board feet appraised at \$17,302.

Involvement in the sale were 360,000 board feet of Douglas fir and pine appraised at \$25.05 and 700,000 board feet of Shasta red fir and other species appraised at \$10.90 per thousand.

The Sun Studs bid was \$17,320 based on \$25.10 per thousand for the Douglas fir and pine and the appraised price for the other species group. Other bidders were Paul B. Hult Lumber Co. and

Round Prairie Lumber Co., both Dillard. National Plywood Inc. of Roseburg submitted top bid on the Limpy Mountain Salvage Sale located on 182 acres in the Little River District 49 miles east of Roseburg. The tract contains a total volume of 670,000 board feet appraised at \$15,350 including 640,000 board feet of Douglas fir and pine appraised at \$23.65 per thousand

and 30,000 board feet of western hemlock and other species appraised at \$7.15 per thousand. The bid of National Plywood was \$15,480 based on \$23.85 on the Douglas fir and pine and \$7.20 on the western hemlock and other species. Other bidders were Douglas County Lumber Co., Miles H. Feero of Dillard, Round Prairie Lumber Co. and Tilley Logging of Sutherlin.



**THE PEOPLE'S CHOICE** — This oil painting of a dilapidated barn was far and away the most popular picture exhibited in the art gallery at the Douglas County Fair. It is the work of Helen Dunham of Bandon and despite the fact that the judges gave it only a third place award, fairgoers by ballot proclaimed it to be their favorite. As a result of the popular vote, Mrs. Dunham won a check for \$100 which was joint prize offered by the U. S. National Bank and Pacific Power and Light Co. Del Plant in charge of exhibits at the fair, is shown holding the winning painting which was entered in the realistic landscape class. Idea for the balloting was the brainchild of Patti White, art director of the fair. It proved to be one of the most interest-provoking activities in the entire five days of the fair. (News-Review photo)

## Big Game Hunter Speaks At Kiwanis

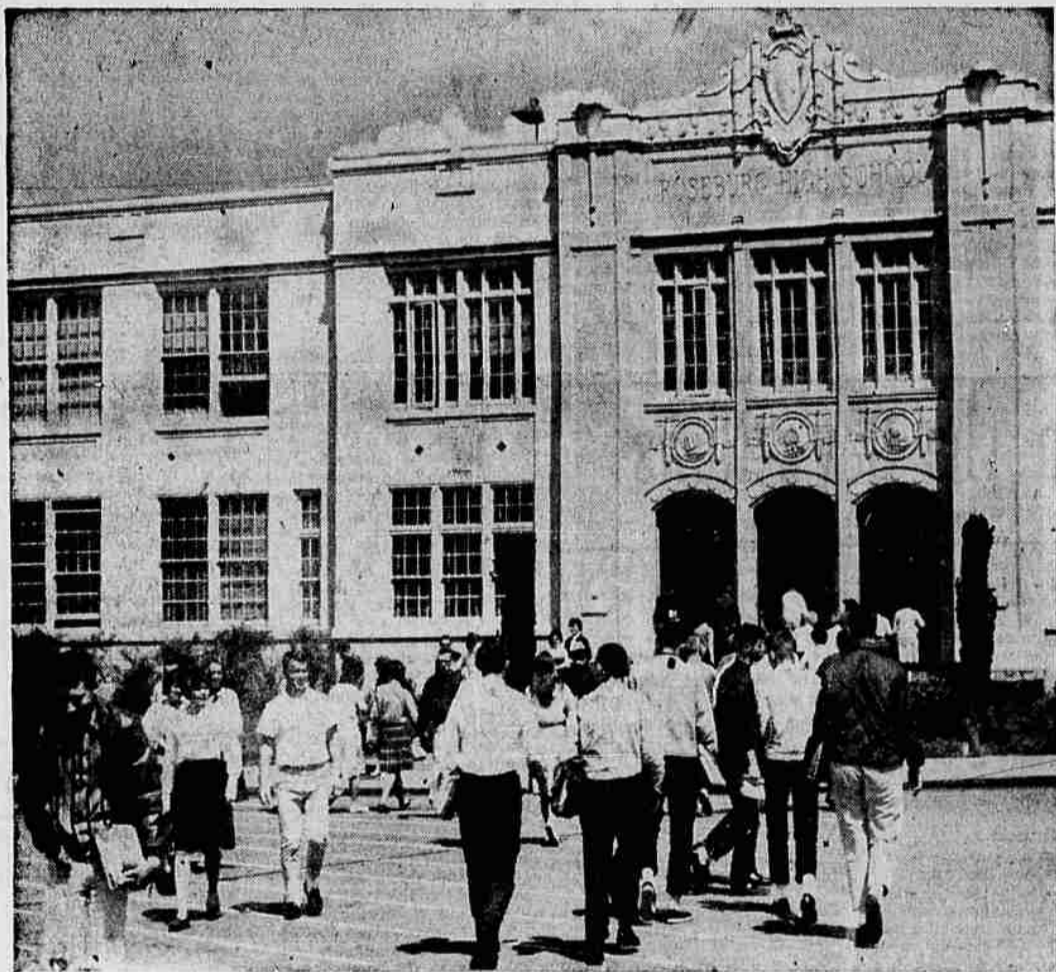
A slide-illustrated description of a big game animal hunt comprised the program at the meeting of the Roseburg Kiwanis Club Tuesday.

Dr. Hall Seely, who traveled around the world this summer in quest of big game trophies, showed colored slides of many of the places he visited and animals bagged on various hunts.

Pictures were shown of Hawaii, Tokyo, Hong Kong, New Delhi and different hunting areas. Dr. Seely showed pictures of tigers and other animals shot both in India and Portuguese East Africa.

He was introduced by Paul Geddes.

American Legion Junior baseball representatives from Oregon and Montana were guests at the meeting as were Earl Thornton, Dennis Dutton, Glen Frakes, Larry Sconce and James Tofel of the Kiwanis Pee Wee baseball program.



Roseburg High School—one of 15 schools in the Roseburg School District—is an example of the extensive educational facilities available to Douglas County youth.

Another way Pacific Power serves you in Douglas County...

## \$2260 Per Day in Taxes!

Pacific Power & Light is Douglas County's largest taxpayer. Last year the Company paid \$825,971 in state and local taxes here. That's \$2260 per day! And much of this large payment goes to support Douglas County schools. Roads, parks and other essential community services also benefit. Over the past ten years, PP&L taxes have totalled nearly \$7,000,000! They help make Douglas County a wonderful place to live... another good reason why electric service from Pacific Power & Light is today's biggest all-around value!



**Pacific Power & Light Company**  
Your Partner in Douglas County Progress!

1481 N.E. STEPHENS  
PH. 672-4811

1475  
paint  
colors  
MIXED TO ORDER  
AT WARDE!

Available in Wards best interior and exterior finishes—just choose from Wards Custom Color Paint Selector Book. Use Wards Color Harmonizer in your home to color-scheme in the decorator-approved way!

## Red Hot Paint Sale!

HURRY—SAT. LAST DAY TO SAVE ON THESE AND MANY MORE PAINT NEEDS

### HOUSE PAINT... CUT 1.54!



STYLE HOUSE 1-COAT  
SUPER HOUSE PAINT

5.44  
per gal.

REG. 6.98

1 coat covers—no other linseed oil-base paint hides better! Finest pigments—resists mildew, discoloration. Self-cleaning.



1 COAT PROTECTS  
WARDS ROOF, FOUNDATION COAT

Asphalt-asbestos preservative—one coat seals cracks, helps stop costly moisture damage to composition, felt, tile, concrete. Non-toxic when dry. Black only.

3.99  
5 gallons  
REG. 4.79



**GUARANTEE**  
Guaranteed to cover any color in one coat (except on coarse stucco or shake shingles) when applied with brush as instructed. If results are not as stated, Wards will supply enough paint to insure coverage, or, at the customer's option, will refund the full purchase price of the paint.  
GUARANTEED ONE-COAT LO-LUSTRE HOUSE PAINT No. 101

**GUARANTEED!**

LO-LUSTRE—COVERS IN ONE COAT!

Twice the titanium dioxide of ordinary house paints—covers any color in 1 coat! Low-sheen, alkyd-oil base, "breather" type—resists moisture-blistering. White.

6.99  
gal.  
REG. 7.98

### ROOM BEAUTY—FAST, EASY!

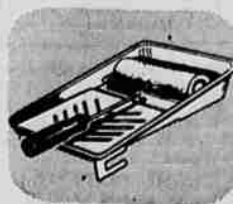
\$1.00 OFF! STYLE HOUSE  
SUPER LATEX INTERIOR



4.69  
gal.  
REG. 5.69

Spruce up your walls with one of Wards many designer colors—and save too! Easy to use—hides many colors in 1 coat; dries in 30 minutes; cleans up with soapy water; leaves no painty odor. Washable, too.

Style House Super Semi-Gloss enamel 2.19 qt. ... 5.98 gal.



**ROLLER AND TRAY**  
Paint goes on fast and easy with this rust-resistant metal tray and 7" roller.  
77c



**CALK CARTRIDGES**  
5 for 2.95 "Flow-control" type—ends costly spill-outs, over-runs. 15 lineal ft. size.  
5 for \$1



**1.59 CALKING GUN**  
Quality ratchet-action gun with easy-grip handle, baked-on finish. 9" long, 2 1/4" diameter.  
88c



**WOOD STEP STOOL**  
Just right for playroom, den, kitchen. Made of best seasoned ladder stock. 25-in. high. Now  
1.98

OPEN THURS. & FRI. NIGHTS UNTIL 9:00