

Business Scene

By Leroy B. Inman

Sat., Aug. 17, 1963—The News-Review, Roseburg, Ore. 5

Economic Picture Continues Static For Area During July

The economic picture for central Douglas County remained little changed during July over that of the previous month and for one year ago, according to the monthly report of F. C. Riley, Oregon State Employment office manager for Roseburg.

The report shows one smaller sawmill (Stomar Lumber Co.) was purchased by larger firms and subsequently closed. However, the majority of the workers affected have been absorbed in the industry.

The labor dispute generally in effect in the northwest has so far created a minimum of problems in this area. The issues, however, are now settled, and conditions should improve.

Construction activities continued at a high level. During July, 48 permits were issued in Roseburg,

for \$231,039, including a 16-unit apartment house for \$117,000, bringing the total for the year to \$2,089,883.

Wholesale and retail trade was at a level below normal due to unsettled labor issues in the lumber and wood products industries, but should pick up now with the strike settlement.

The harvesting of green beans is just now getting well under way with a good crop in prospect. Further information is available through the employment office staff.

In July, 78 young people under 22 years were placed in various types of employment by the office. The active file of job applicants numbers 753 of which 294 are female.

Comparisons Given
New job applications were listed at 306 for July, compared with 296 for June and 278 for July 1962. There were 201 job placements compared with 190 in June and 209 in July last year. Initial claims stood at 546 in July, 377 in June and 295 in July of 1962. The average weekly number who claimed a week of joblessness was 459 in July, 423 in June and 384 in July a year ago.

Insured unemployment compared to the average covered employment was 3.7, up slightly from the 3.4 of four weeks ago and 3.0 one year ago. Two years ago it was 4.3 and three years ago 2.2. The state rate for the week ending July 25 was 3.6, that for the Grants Pass area, 5.0, North Bend 6.1 and Eugene 5.9.

Building Front Of Music Store Is Facelifted

Reynolds-Rushton Music Co. is having the front of the building housing its business at 516 SE Jackson St. facelifted.

Gene Rushton said the renovation will be concerned principally with the front to give it a new, more attractive look. The work will take about a week. Edwards & Coxe contractors are doing the project. Building permit was taken out in the sum of \$2,500.

The only other city building permit of importance taken out during August is for demolition rather than new construction.

Pacific Power & Light Co. is having the former Wilson's Chapel of the Roses building and an adjoining home at 1025 and 1023 SE Oak Ave. demolished. Jim C. Gertson and Charles Rolls are doing the work and took out a permit for \$3,200.

Phil Quisenberry, Copco division manager at Roseburg, said razing of the buildings will take about 60 days. He said plans are being shaped up but not yet completed for construction of a new building to house the Copco business offices. The office is located now in temporary quarters in the Oerding Building on SE Washington Ave.

No date for start of the new building construction has been announced. The house being demolished is known as the old Ritter home and was purchased jointly by PP&L and the U.S. National Bank. The grounds will be used for parking purposes.

Construction of new transmission lines and substations and expansion of distribution system capacity to provide more electric facilities to serve growing power loads throughout the Pacific Power & Light Co. service areas in the Northwest are all on schedule, the company reports.

E. Robert de Luccia, vice president and chief engineer, reported Tuesday PP&L's midsummer milestone check on the total of \$58-million of construction had placed the work on pace despite the late start on work in western Oregon. He noted the dollar volume of the 1963 construction and related payroll was at a one-year record level for regular system facilities.

Completed or nearing completion are substations expansions and 115,000-volt circuits providing large capacity or alternate lines supplying Oakland, Winchester, Lebanon, Sweet Home, Prineville, Klamath Falls, Roseburg, Medford, Albany and Corvallis in Oregon.

The largest single PP&L project in progress is a \$25-million expansion of the big coal-fired steam-electric generating plant near Casper, Wyo. The 200,000-kilowatt turbine-generator will double the size of the station, making it the largest in the rocky Mountain region.

Construction Ups Reedsport Taxes

The Reedsport property owner will find a 9.6 mill increase in his total taxes when he opens his tax statement in November, according to figures released by Leland Svarverud, Douglas County assessor.

The combined levy jumped from 107.2 mills for 1962-63 to 116.8 mills for 1963-64.

Increases were noted for all taxing units affecting the city taxpayer, with the exception of the cost of Reedsport city government, which dropped 10.1 mills, from 27.4 mills for 1962-63 to 17.3 mills for 1963-64. Major factor in the city millage drop was the completion of the retirement of the sewer bond issue, correspondent Dawn Peseau reports.

School tax increases reflected construction bond issues, expansion costs and increased costs of instruction. Reedsport elementary district 105 increased from 27.3 mills to 34.7; Reedsport High School U-13 from 18.0 to 26.6; Douglas County school from 6.4 to 6.6; county rural school district 16.4 to 17.1; SW Oregon College district 4.2 to 4.9; Port of Umpqua district from 0.0 to 2.1 mills.

The 7.5 mills for the Lower Umpqua Hospital district, the same as for 1962-63, represents the serial levy amount plus the six per cent increase.

Record Timber Volumes Harvested From Forests

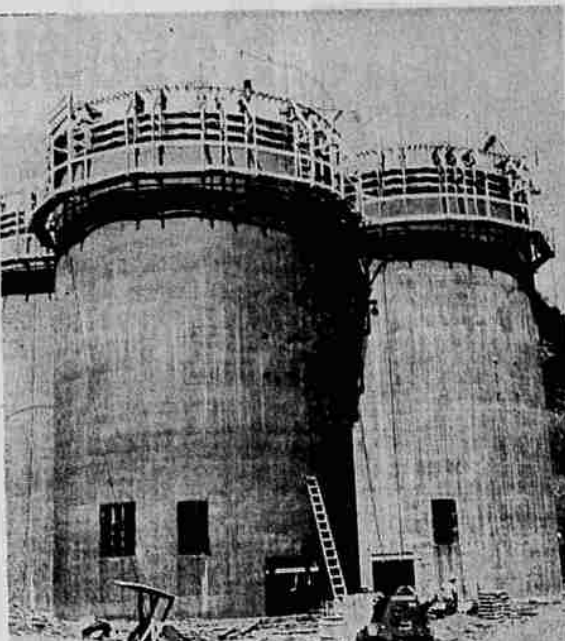
PORTLAND (UPI)—National forests in Oregon and Washington sold and harvested record volumes of timber in fiscal 1963, U.S. Forest Service tabulations showed today.

J. Herbert Stone, Pacific Northwest regional forester, said 5,509,927,380 board feet of timber was sold and 4,539,801,560 board feet was cut during the year.

Value of timber sold was \$92,332,899 and value of timber harvested was \$80,239,759, Stone said.

BLAMES STREET LIGHTS

BRAINTREE, England (UPI)—Mrs. Minnie Raymond said today she thought recently installed sodium vapor street lights killed her prize 130-year-old monkey puzzle tree.



SILOS FOR CHIPS — Pictured above are two stages in the construction of concrete silos which will be used for storage of chips for the Douglas Veneer Co.'s new particle board plant south of Dillard. (News-Review photo)



Chip Storage Silos Built For Particle Board Plant

Construction of four concrete chip storage silos is nearing completion on the site of the Douglas Veneer Co.'s new particle board plant being built just south of Dillard.

These silos were designed by Marshall, Barr and Associates from Seattle and are being constructed by the Anderson-Westfall Co. from Portland. Each silo is 41 feet in diameter and 109 feet high. The walls are seven inches thick, steel reinforced concrete and were poured continuously using slip forms.

The concrete forms were prepared in advance of pouring the wall and consisted of lumber forms built in 41-foot diameter rings about 4 1/2 feet high. The lumber forms are raised at the rate of approximately eight inches per hour with air jacks operating on steel rods placed around the perimeter of the silos.

Once the job is started the concrete and steel are put in place continuously 24 hours a day by a crew of about 20 men until they reach the top of the wall. All four silos go up at the same time and are built at the rate of about 15 feet per day. The two steel beams across the top of each silo will support a concrete roof poured after the walls are built.

Slip form concrete work is a standard procedure commonly used on grain silos and many times 50 or more silos have been poured simultaneously using this procedure, it was pointed out.

When full, each of these silos will contain about 1,000 tons of chips. The chips will be fed into the silos from the top and removed at the bottom by a special unloading mechanism. Operation will be automatically controlled from a control panel in an adjacent building.

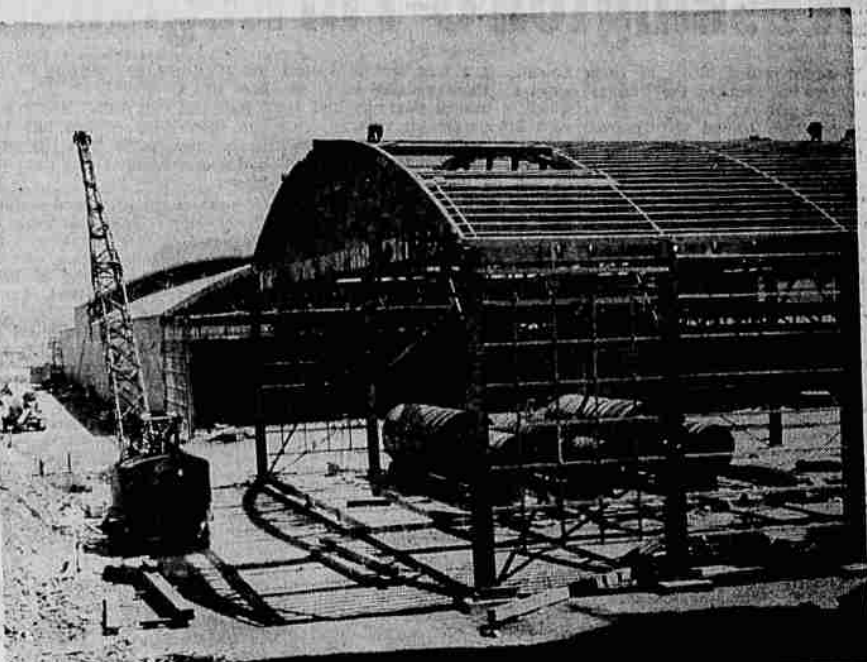
The chips are used in the production of particle board.

Kellys Of Riddle Buy Hereford Breed Of Hogs

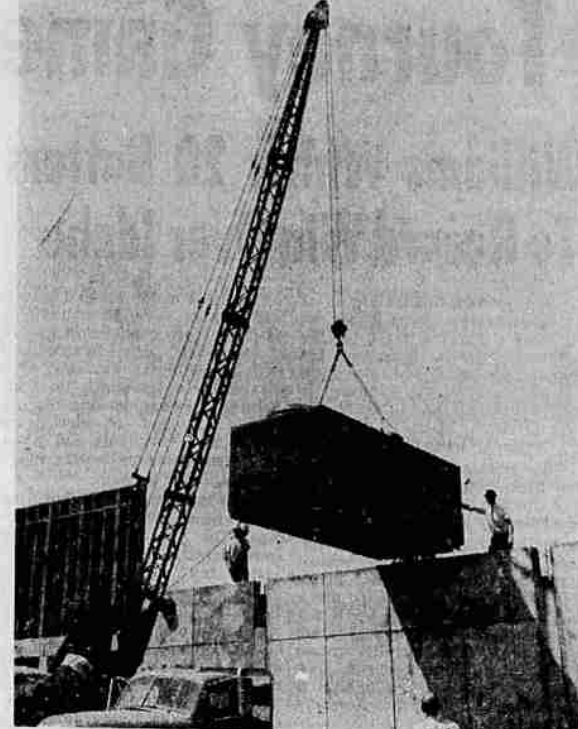
Mr. and Mrs. Roy Kelly of Route 1, Riddle, have introduced into Oregon a new strain of Hereford hogs.

The breed was originated in Iowa in 1954. They have white faces like cattle. The gilts (young sows) are red and white like cattle and have white feet, face, ears and belly.

The Herefords were purchased from Herbert and Daisy Miller of Snoqualmie, Wash. They acquired two sows, Cascade Mattie and Cascade Chris and a boar, Cascade Ed.



PARTICLE BOARD PLANT—The Douglas Veneer Co.'s new particle board plant is shown rising on a site near Roseburg Lumber Co.'s operations south of Dillard. The plant will use chips from waste which in earlier days of lumber and plywood operations was burned. (News-Review photo)



FOUR AIR CONDITIONING units like the one shown above were hoisted into place atop the new Pay Less Drug Store building Wednesday. Crane equipment was used to lift the 3,400-pound units from the street. (News-Review photo)

Pay Less Air Conditioning Units Hoisted Into Place

The new Pay Less Drug Co. store, a part of the Roseburg Plaza development at SE Jackson St. and SE Washington Ave. will have complete air conditioning when completed.

On Wednesday four units, each weighing 3,400 pounds, were hoisted into place with crane equipment of Teeples & Thatcher, contractors. There will be two other 2,400-pound units.

John B. Lukens Jr., representative of Day-York Distributors of Portland, was here to supervise installation by Town & Country Re-

frigeration, Roseburg York dealer.

The units each have a 210,000 BTU capacity, for total of 1,200,000 BTUs. They are described as air conditioning type units with integral gas heating and refrigeration cooling.

Work is reported progressing on schedule for this building and the new Safeway Store structure, and an early fall opening for both units is contemplated.

Red Barn Property At Glide Is Sold

The Red Barn east of Glide at the Lone Rock Bridge has been sold and will be re-opened by its new owners after closure since June of 1962, reports Mrs. Arthur Selby, Glide correspondent.

Mr. and Mrs. W. P. Bootz of Tiller and Mr. and Mrs. Ernest Ratliff of Fontana, Calif., have purchased the property from Bessa Rasmussen of Roseburg. They plan to remodel the building and reopen the restaurant. They also have applied for a liquor license.

The Bootz operate a tavern and restaurant in Tiller and live on a 200-acre ranch on the South Umpqua River in that vicinity. Ratliff formerly was with an insurance company at Fontana.

Strout Realty handled the transaction.

Another property transaction at Glide includes sale by Mr. and Mrs. Robert Hamer of their three-bedroom home to Mr. and Mrs. Lester Pierce.

The Hamers have left for Arkansas, where he plans to enter private business. Pierce is a forester with the Little River District of the Umpqua National Forest and is stationed at the Glide Ranger Station.

Helen Glenn Real Estate handled the sale.

U. S. Plywood To Build Plant In Lower Michigan

United States Plywood will build the largest particle board plant east of the Mississippi at Gaylord, Mich. It was announced by Gene C. Brewer, U.S. Plywood president. Gaylord is 225 miles northwest of Detroit.

The \$5 million plant, which will produce 40 million square feet annually of 3/4" Novoply, the company's three-ply engineered particle board, will be erected on a large site south of that city. Scheduled for completion in late spring of 1965, this plant will employ approximately 140 people and will boost U.S. Plywood's over-all output of particle board by 40 per cent. The company is the world's leading producer of particle board.

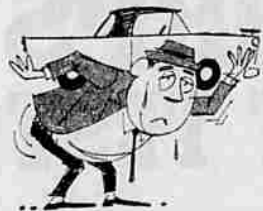
In 1962 over 350 million square feet (3/4-inch basis) of particle board was produced in the United States, an 11 per cent increase over 1961.

U.S. Plywood will draw its raw material from local tree farms utilizing fresh cut logs for shavings and flakes needed in manufacture.

WRONG FLOOR

AMERSFOORT, The Netherlands (UPI)—Army private Piet Van De Berg, thinking he was on the first floor of his barracks, stepped out a second story window to answer roll call and broke two ribs and his right leg in the fall.

Auto Insurance Costs GETTING YOU DOWN?



Save money with Farmers... the best auto insurance buy in America today!

As you save, you get modern, broad form coverage, fast, fair, friendly service!

FARMERS INSURANCE GROUP

Dick Warren Res. Ph. 459-3570

Art Subert Res. Ph. 673-8572

Glen Wright Res. Ph. 673-5610

C.V. DeCamp Dist. Mgr. 1602 S. E. Stephens Ph. 672-2618

Only furnace backed by \$500 warranty bond...

Coleman Trim Boy GAS FURNACE

Like all Coleman heating products, this Trim Boy Gas Furnace is backed by a \$500 bond underwriting your Coleman guarantee. It's the strongest guarantee for any furnace—and you pay nothing extra!

NO MONEY DOWN! Easy Terms!

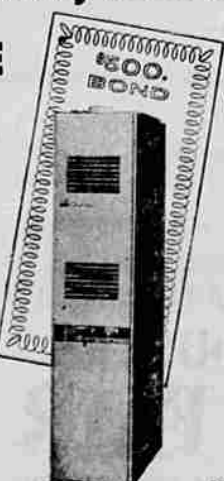
With all these Coleman exclusives for extra comfort and convenience:

- More warmth from bigger heat exchanger.
- Pre-designed for add-on air conditioning.
- Compact—occupies less than 3 sq. ft. of floor space.

MUNION'S HEATING AIR CONDITIONING

1731 NE Stephens

Phone 673-5460



WE SELL THE BEST AND SERVICE THE REST

1963 DOUGLAS COUNTY



AWARDS • PRIZES • EXHIBITS • CONTESTS • GAMES • SHOWS • RIDES • RACES

FAIR FINALE—Sunday Evening 9: P.M.

GRANDSTAND ARENA

Win Your Weight In Nickels... or Merchandise Including:

- ★ DAIRY PRODUCTS — Courtesy of Umpqua Dairy
- ★ U & I SUGAR Courtesy of Marks Markets
- ★ NAILS — Courtesy Of South Stephens Hardware
- ★ TAB POP — Courtesy Of Coca Cola Bottling Co. of Roseburg
- ★ DIAMOND 'A' Canned Goods Courtesy of Drive-n-Save Market
- ★ SIGNAL PREMIUM Motor Oil Courtesy Of Myers Oil Co.
- ★ HUDSON HOUSE & DUNDEE CANNED GOODS — Courtesy of Byrd's Market