



**WANTS SECOND TITLE** — The first candidate in Miss Skyways contest is a lovely girl who already holds the title of Douglas County Rodeo queen. She is Trudy Esselstrom, who is vying for the crown in the first beauty contest ever staged in conjunction with the Roseburg Air Show. The winner of the contest will win a free air trip to Crater Lake. The show itself is scheduled July 27 and 28. It will feature showings of different types of aircraft, stunting and skydiving. (Photo Lab picture)

## New Disposal Sites Opened

Douglas County now has in operation two more landfill refuse disposal sites, aimed at providing sanitary disposal of solid wastes. They are for public use, free of charge under what is called the Douglas County Solid Waste Disposal project.

Opened Monday was a site about 2 miles west of Glide. Entrance to the site is located on the North road to Whistler's Bend. It is about one-fourth mile south of the highway, in an isolated area.

The other site, scheduled to be opened today, is slightly to the east of Camas Valley. Already in operation are disposal sites of the land fill type east of Tiller and west of Glendale.

### Dumps Closed

Bruce Bailey, county sanitarian, said former, poorly located and unsanitary garbage dumps have been closed, and the public is directed to make use of the new locations. There are five other city garbage disposal locations and several unauthorized dumps in the county, many of which do not meet the specifications of the state Sanitary Authority.

Land fill operations, said Bailey, are not new but have not been put to the fullest use by cities or counties. But the trend is in that direction in order to assure the best sanitary conditions and for the elimination of flies, rodents and air pollution.

The land fill disposal site consists of a deep trench, into which garbage is dumped and covered by dirt at least weekly, or oftener if there is need. When the original trench is filled, said Bailey, a new one is dug and the first one smoothed over.

### Attributes Noted

Many large cities use land fill operations within their business areas to fill low areas. They can be operated without odor and can be fully sanitary.

Burning of the sites will be kept to an absolute minimum, and done only when necessary to dispose of cardboard boxes, brush or the like which do not compact easily, according to Bailey.

Aided by a federal appropriation of about \$12,000 made available through the state Sanitary Authority, the county in its budget appropriated \$78,000 (which includes the federal funds) for establishment of the Douglas County Solid Waste Disposal Project.

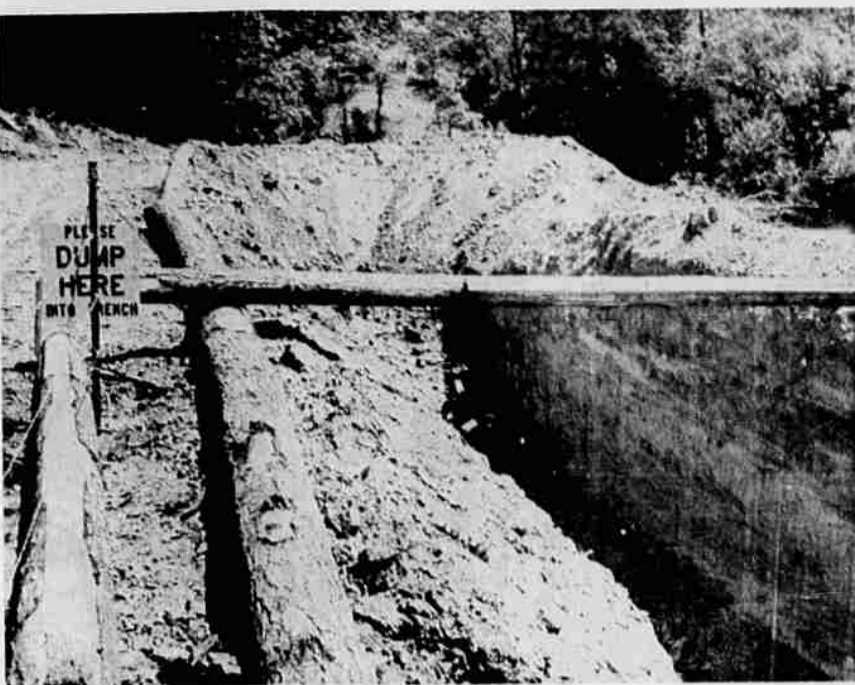
A large part of the initial cost is for equipment, although the county was able to purchase a bulldozer for considerably less than anticipated, which will represent a saving in capital outlay, according to Bailey.

### Crew Working

A two-man crew using the portable dozer, will tend the sites, build roads where necessary, dredge trenches and make the necessary land fills. The county road department's aid will be listed where needed for any construction too heavy for the smaller equipment to handle.

Costs of maintaining the disposal areas will be considerably less than the initial outlay.

Opening of the site at Glide makes possible closing the one on Bureau of Land Management property on Little River, at the bureau's request. The same is true for the site at Camas Valley. The one at Tiller is on Forest Service land, by special use permit. The Glendale site formerly was operated jointly by the city and county, but has been deeded over to the county. The county hopes to build other sites where needed and available, as funds are made available.



**DUMP OPERATION STARTS** — The new Solid Waste Disposal Program site near Glide was opened to the public Monday. The trench, perhaps 300 yards long and 10 feet deep, will be used in sections. Here the first section is blocked off by a wire screen (held across the trench by a pole). It will be moved as new acres of the trench are opened for dumping. The waste materials will be covered weekly to keep the site sanitary. Another section of the site is set aside for old car bodies. (News-Review photo)

## Nixon Says Test Ban Concessions Would Be Win For Communism

FRANKFURT, Germany (UPI) — Former Vice President Richard M. Nixon today said any further Western concessions in nuclear test ban talks would be "a victory for communism."

Nixon, on an extended vacation tour with his family, told United Press International, "I feel we have made quite sufficient concessions on a nuclear test ban treaty."

"If we make any further concessions in Moscow, the treaty would be a victory for communism," Nixon said, referring to the Anglo-American talks going on now with the Soviet Union.

"On the other hand, if we enter the discussions hard-headed and with a realistic understanding of Soviet aims, we may very well achieve an acceptable treaty," the defeated 1960 GOP candidate for president said.

Nixon, accompanied by his wife and two daughters and friends, also discussed the coming 1964 presidential race.

"I should have something to say in about three months. If you say anything now you put yourself out on a limb. All those who will be candidates will have to declare themselves within three months and then I'll be able to throw my support to the man I believe can do the best job," Nixon said.

"I definitely will not declare myself a candidate," he said. Nixon, pausing in Frankfurt on a hop from Switzerland to Hungary, spoke about New York Gov. Nelson A. Rockefeller's charges that extreme right-wingers hope to gain control of the Republican party.

"Can Make Trouble" — "It's true that the extreme right wing — the nuts or the kooks as we call them in California — can make plenty of trouble for us as they did for me in California," Nixon said, referring apparently to his unsuccessful bid for the California governorship last year.

Nixon said the GOP's extreme right wing is "potent, noisy and well-financed, but I do not think they will dominate the convention," in which the GOP will pick its presidential candidate next year.

Nixon said it is true that "the extreme right wing is behind Sen. (Barry) Goldwater now. But I do not think he is one of them. And I am sure he must regard them as a liability just as I do."

Some extreme right-wingers regard the Republican senator from Arizona as "too liberal," Nixon said.

right wing — the nuts or the kooks as we call them in California — can make plenty of trouble for us as they did for me in California," Nixon said, referring apparently to his unsuccessful bid for the California governorship last year.

Nixon said the GOP's extreme right wing is "potent, noisy and well-financed, but I do not think they will dominate the convention," in which the GOP will pick its presidential candidate next year.

Nixon said it is true that "the extreme right wing is behind Sen. (Barry) Goldwater now. But I do not think he is one of them. And I am sure he must regard them as a liability just as I do."

Some extreme right-wingers regard the Republican senator from Arizona as "too liberal," Nixon said.

## Rockefeller-Goldwater Debate Suggested By Oregon Governor

SALEM (UPI)—Gov. Mark Hatfield suggested Monday that the two leading Republican presidential hopefuls, New York Governor Nelson Rockefeller and Arizona Sen. Barry Goldwater, meet in face-to-face debate before the Oregon primary next year.

He called for the debate "as in the high level objective tone of the Dewey-Stassen debate."

Thomas E. Dewey and Harold Stassen appeared frequently in Oregon during the 1948 Republican primary campaign which climaxed by a face-to-face debate.

Dewey's subsequent Oregon primary victory gave him a big boost toward getting the GOP presidential nomination that year.

"Our party is in no position to incite political mayhem by ruthless intramural attacks which can only lead to fratricide. We advance neither the cause of the party nor individual candidacies by such tactics," Hatfield warned.

Referring to recent Rockefeller and Goldwater speeches, Hatfield declared it is "obvious" from their statements "a magnificent opportunity exists for constructive discussion of bed rock issues."

"We can disagree without being disagreeable. Clear positive views on an impersonal basis should be welcomed by all within the party," Hatfield declared.

He warned the Republicans will face a common opponent in the coming election and declared the party would need the support of all its members, independents and "discerning Democrats" to win.

Referring to recent Rockefeller and Goldwater speeches, Hatfield declared it is "obvious" from their statements "a magnificent opportunity exists for constructive discussion of bed rock issues."

"We can disagree without being disagreeable. Clear positive views on an impersonal basis should be welcomed by all within the party," Hatfield declared.

He warned the Republicans will face a common opponent in the coming election and declared the party would need the support of all its members, independents and "discerning Democrats" to win.

Referring to recent Rockefeller and Goldwater speeches, Hatfield declared it is "obvious" from their statements "a magnificent opportunity exists for constructive discussion of bed rock issues."

"We can disagree without being disagreeable. Clear positive views on an impersonal basis should be welcomed by all within the party," Hatfield declared.

He warned the Republicans will face a common opponent in the coming election and declared the party would need the support of all its members, independents and "discerning Democrats" to win.

Referring to recent Rockefeller and Goldwater speeches, Hatfield declared it is "obvious" from their statements "a magnificent opportunity exists for constructive discussion of bed rock issues."

"We can disagree without being disagreeable. Clear positive views on an impersonal basis should be welcomed by all within the party," Hatfield declared.

He warned the Republicans will face a common opponent in the coming election and declared the party would need the support of all its members, independents and "discerning Democrats" to win.

Referring to recent Rockefeller and Goldwater speeches, Hatfield declared it is "obvious" from their statements "a magnificent opportunity exists for constructive discussion of bed rock issues."

"We can disagree without being disagreeable. Clear positive views on an impersonal basis should be welcomed by all within the party," Hatfield declared.

He warned the Republicans will face a common opponent in the coming election and declared the party would need the support of all its members, independents and "discerning Democrats" to win.

Referring to recent Rockefeller and Goldwater speeches, Hatfield declared it is "obvious" from their statements "a magnificent opportunity exists for constructive discussion of bed rock issues."

"We can disagree without being disagreeable. Clear positive views on an impersonal basis should be welcomed by all within the party," Hatfield declared.

He warned the Republicans will face a common opponent in the coming election and declared the party would need the support of all its members, independents and "discerning Democrats" to win.

Referring to recent Rockefeller and Goldwater speeches, Hatfield declared it is "obvious" from their statements "a magnificent opportunity exists for constructive discussion of bed rock issues."

"We can disagree without being disagreeable. Clear positive views on an impersonal basis should be welcomed by all within the party," Hatfield declared.

He warned the Republicans will face a common opponent in the coming election and declared the party would need the support of all its members, independents and "discerning Democrats" to win.

## Medford Policeman Held On Statutory Rape Count

MEDFORD (UPI) — A 26-year-old Medford city police officer is being held in Jackson County jail on a charge of statutory rape with bail set at \$5,000.

Charles William Eagle, who joined the police force about six months ago, was arrested on a complaint by the parents of a 15-year-old Medford girl who had been the family baby-sitter.

Clyde Fichtner, acting police chief, said Eagle had been dismissed from the force.

**FOR RENT**  
**ROSE ST. BUILDING**  
80 x 110. Now occupied by Lockwood Motors. Available about August or September. Will remodel to suit tenants.  
**DIAL 679-5002**

## Khrushchev's Turn-About Puzzles World's Leaders

BY HENRY SHAPIRO

MOSCOW (UPI) — Premier Nikita S. Khrushchev has been acting oddly in recent days for a man who once banged his shoe at the West and professed eternal friendship for Communist China.

He has snubbed a Chinese delegation here for ideological talks, and just as openly welcomed a Western delegation here to discuss a nuclear test ban treaty.

The Chinese, nominally Russia's allies, are subjected to bitter attacks as racists, warmongers, and rivals for world Communist leadership. The United States and Britain, who are on the opposite side in the cold war, are greeted with jokes and hand-claps.

The contrast is so obvious that many diplomats here are asking if Khrushchev is planning to seek peace with the West at the expense of Communist ENA.

**Points Out Indications**  
Diplomats who thought this might be the case pointed to these indications:  
Khrushchev refused the Chinese even the normal courtesy of greeting a top delegation from a "fraternal Communist party."

## Rocky Levels New Attack On Barry

MASSENA, N.Y. (UPI)—Gov. Nelson A. Rockefeller leveled another attack on the presidential candidacy of Sen. Barry Goldwater Monday night, expressing the fear that the Arizona conservative will become a "captive" candidate of extreme right wing factions.

"I have great respect for Goldwater," said Rockefeller following a speech before the New York State Society of Newspaper Editors, "but I'm concerned he may become the captive of those elements."

Goldwater, considered by many to be the front-running candidate for the 1964 Republican nomination, has made no formal announcement of his plans to run, but Rockefeller said it could be assumed the senator would indicate his availability.

Monday night's statement was Rockefeller's second attack in two days on "radical right" groups backing Goldwater, and the double assault was interpreted by political observers as an attempt by the governor to recover lost ground in the race for the GOP nomination.

Rockefeller was believed to be in the Republican driver's seat until his recent re-marriage to a divorced woman when, suddenly, Goldwater's stock began to soar.

Sunday, the governor lashed out at the "radical right lunatic fringe," warning the Republican party was in "real danger of subversion" by this group. He said the radical right was "embarked on a determined and ruthless effort to take over the party, its platform and its candidates on their own terms."

Rockefeller was believed to be in the Republican driver's seat until his recent re-marriage to a divorced woman when, suddenly, Goldwater's stock began to soar.

Sunday, the governor lashed out at the "radical right lunatic fringe," warning the Republican party was in "real danger of subversion" by this group. He said the radical right was "embarked on a determined and ruthless effort to take over the party, its platform and its candidates on their own terms."

Rockefeller was believed to be in the Republican driver's seat until his recent re-marriage to a divorced woman when, suddenly, Goldwater's stock began to soar.

Sunday, the governor lashed out at the "radical right lunatic fringe," warning the Republican party was in "real danger of subversion" by this group. He said the radical right was "embarked on a determined and ruthless effort to take over the party, its platform and its candidates on their own terms."

Rockefeller was believed to be in the Republican driver's seat until his recent re-marriage to a divorced woman when, suddenly, Goldwater's stock began to soar.

Sunday, the governor lashed out at the "radical right lunatic fringe," warning the Republican party was in "real danger of subversion" by this group. He said the radical right was "embarked on a determined and ruthless effort to take over the party, its platform and its candidates on their own terms."

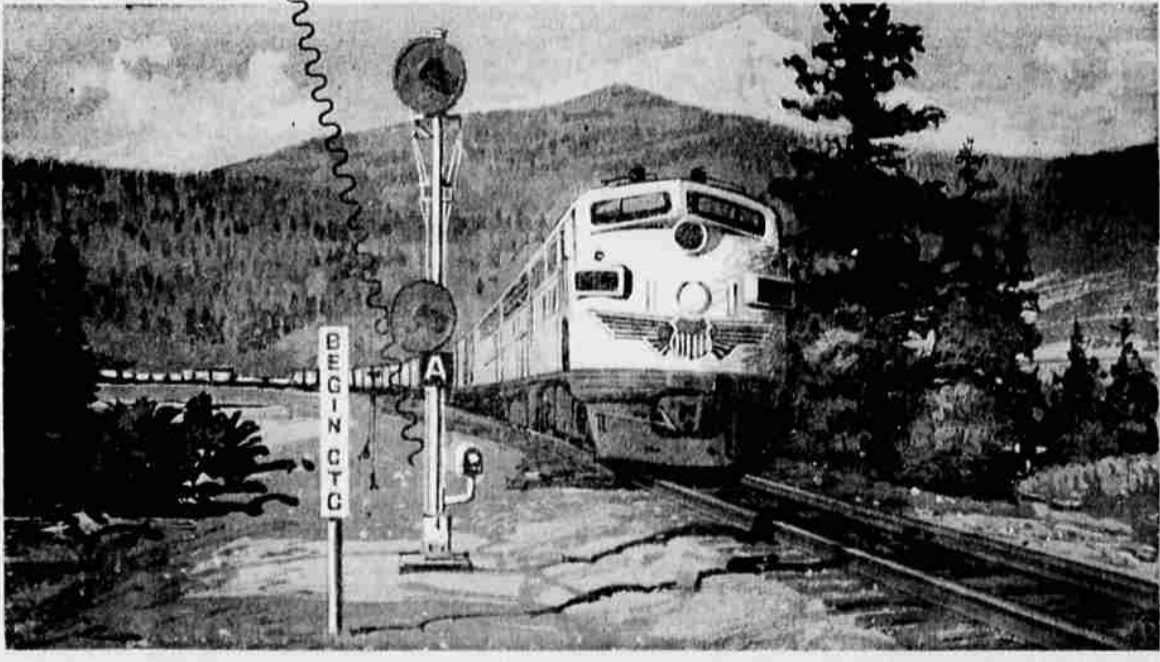


**"CTC"**  
How **"CTC"** benefits you as a shipper or traveler

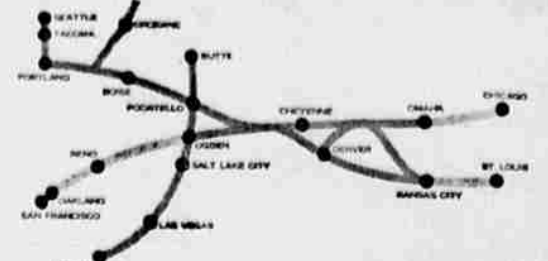
Electronics performs vital tasks along Union Pacific—take "CTC" (Centralized Traffic Control), for example.

By means of push buttons on master control boards, dispatchers direct and control traffic over a radius of hundreds of miles. CTC makes for more efficient use of tracks—more trains continuously on the move—economies, and time saved for shippers.

Here is another example of electronics at work to keep freight shipments and travelers moving—surely and dependably, on Union Pacific... the automated rail way. Call: 345-8461, Eugene



**UNION PACIFIC RAILROAD**



**NOW FOR THE FIRST TIME**  
THE "CADILLAC" OF WASHERS IS PRICED WITHIN THE REACH OF ALL  
Model A-36  
**SPEED QUEEN**  
ONLY \$319.95 With Trade  
2-CYCLE-2-SPEED-FLUID DRIVE  
4-WAY LINT REMOVAL  
GIANT LOAD CAPACITY  
HOT, WARM, COLD WATER SELECTION  
TRANSMISSION GUARANTEED 5 YRS.  
PROTECTS YOUR CLOTHES IN SMOOTH, SPARKLING  
**STAINLESS STEEL**  
RUST-PROOF, CHIP-PROOF  
Guaranteed for Life  
Here's your chance to buy the world's finest automatic washer—at a low price never offered before—may never be offered again. Act Now—and SAVE!  
\$189.95 FREE PARKING — Just Drive Up To The Front Door And Walk In —  
**NOW FOR THE FIRST TIME**  
Umpqua Valley  
HARDWARE AND APPLIANCE  
OPEN FRIDAY'S TIL 9  
635 SE STEPHENS Phone 672-1616

**Zenith Hearing Aid Representative**  
Now at  
Chapman's Pharmacy  
Every Wednesday  
9 a.m. to 5 p.m.  
Repairs—Batteries—Accessories  
for most makes  
**SOUTHERN OREGON HEARING AID CENTER**