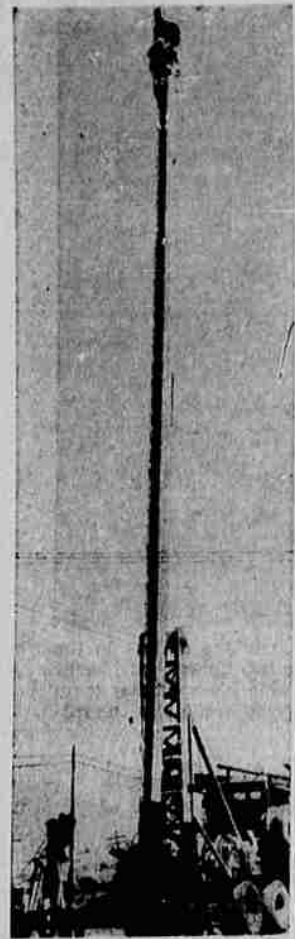


Two Roseburg Men Constructing Poles From Steel Portable Spar



TOWERING 70 feet into the air is the portable steel spar pole, set in place on its truck base. Built-on ladder makes climbing the pole an easy task. (If you don't look down). (News-Review photo)

Seeking an answer to their own problem in speeding up logging operations, two Roseburg area men have come up with the perfection of their own design for a portable steel spar pole.

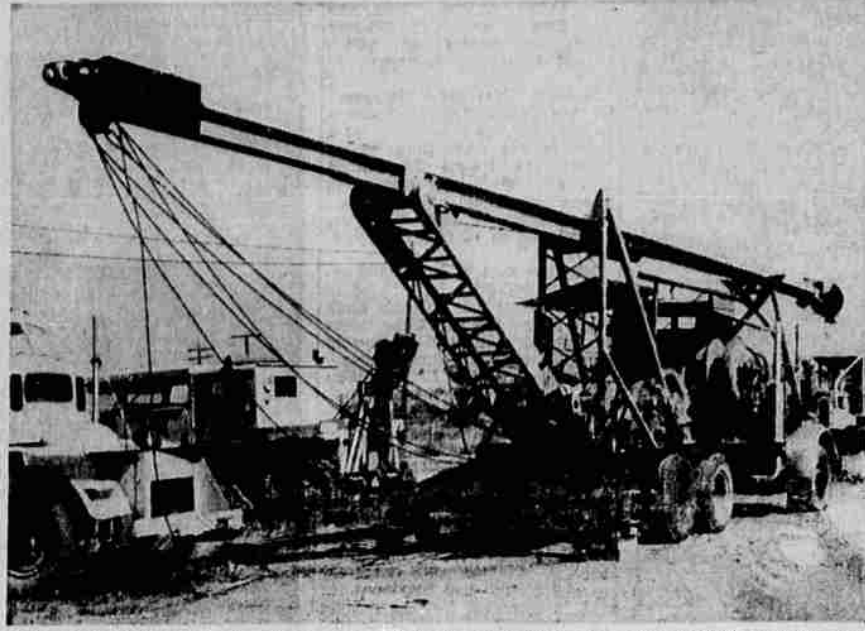
The men are Eston Dumont, Glide, of Dumont Logging Co., a contractor for Sun Studs, and Ken Hebard, Roseburg logging manager for Sun Studs. They have formed a corporation known as D & H Porto Spars, Inc., an independent concern.

They have just completed the production of a unit using facilities of the U.S. Plywood's closed sawmill at Green. The pole itself weighs five tons, and the complete machine, including the donkey engine and track on machine on which it is mounted weighs 54,000 pounds.

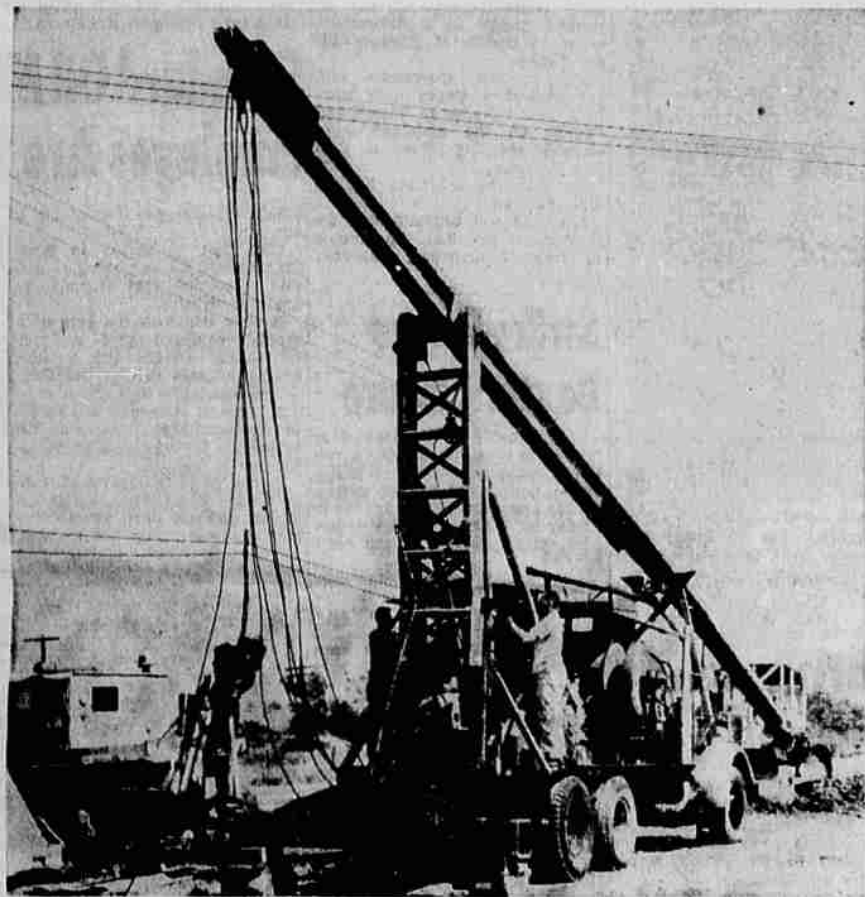
The portable steel spar pole will range from 60 to 70 feet in length. A hydraulic lift hoists the pole to an upright position, and then guy lines are used for supports.

Key to Logging

A spar pole for many years has been the key to logging operations. Loggers select a tall, sturdy



EASILY PORTABLE is the above pictured steel spar pole, mounted with donkey engine on a truck bed for use in logging operations where mobility is an essential. This unit has been built by D & H Porto Spars, Inc., of Roseburg. (News-Review photo)



PORTABLE SPAR POLE is shown being hoisted by hydraulic lift into place, in demonstration at Flury Supply Co. grounds this week. Eston Dumont and Ken Hebard constructed the pole for use in logging difficult areas.

tree within the area to be logged, send up a highlimber to top the tree at a height of 90 to 120 feet, then attach pulleys and blocks. Cables then are run out into the area, fastened by means of chokers to the logs, and the logs are pulled

into the loading dock.

The selected spar tree is not always located at the most convenient spot, and corners of a logging show often prove a problem because of the distance in bringing the logs into the landing.

Portable steel spar poles are comparatively new, although quite a few are now in use. One local firm has three.

Dumont and Hebard hit upon the idea of producing a steel spar adapted to their company's needs about two years ago. After finding success with their design, they have decided to produce them commercially. They see unlimited demand for such equipment. However, production entails considerable capital investment. The cost may range from \$15,000, using the buyers' donkey engine and truck, up to \$30,000 for a complete unit. Costs vary, they said, on the size and type of unit.

The two men state their machine is not intended to replace present heavy machines and tall wooden spars. But they feel they have prepared the best supplement to present equipment on the market today. They emphasize the advantages of mobility of portable lead for logging difficult corners of a logging show.

They estimate substantial costs can be saved by allowing present equipment to log 80 per cent of the job by shorter reach and reduced time, and letting the portable spar log the remaining 20 per cent of the volume.

By using the "skidder system"

Owens Joins USP Engineering Staff

Richard E. Owens has been named to U.S. Plywood Corp.'s Oregon Division engineering staff, according to William W. Wells, Oregon Division manager. Wells formerly was manager for U.S. Plywood at Roseburg.

Owens will specialize in machine design, automation and electronic controls. A graduate of Oregon State University School of Engineering, Owens was chief design engineer with Kimwood Machine Co., Cottage Grove, with a Berger carriage, long corners are no longer a problem, they maintain. Selective "halead"—ci-

ther blowdown or thinning—is a snap, they say. Down time for choker setting can be reduced by flying two sets. Logging through standing timber is no problem, and long side hill reaches along the road recovering Hurricane Frieda blowdown are said to be a snap for the skidder. Several other advantages are also pointed out by the two men.



DONALD E. THATCHER, assistant forester

Donald E. Thatcher Assistant Forester For IP At Gardiner

Donald E. Thatcher has been named assistant resident forester for the Gardiner woodlands area of International Paper, it was reported today.

Thatcher attended high school in Westfir and was graduated this year from Oregon State University with a degree in forest management.

The new I-P forester first worked for the company as a lumber steaker in the Vaughn sawmill. He later worked in the Vaughn plywood plant and was a compassman in the timber cruising crew during the summers of 1957 through 1962.

Thatcher is married and the father of one son.

Business Scene

By Leroy B. Inman

4 The News-Review, Roseburg, Ore.—Sat., June 22, 1963

Construction Starts On New 16-Unit Apartment Building

Ground work and preliminary construction was started this week on a new 16-unit apartment house, to be located on the southeast corner of SE Oak Avenue and SE Flint Street.

Emerald Development Co. of Eugene, owned by George Wingard and family of that city, is having the building erected.

Neil Flanagan, Roseburg, is general contractor. Madson & Stokes will do the electrical work and Gerretsen's will do the plumbing. Other subcontractors will be announced.

The apartment house will consist of two stories, extending 159

City Lumber Yard, Millwork Plant Expanded

Todd Building Co. of 3045 NE Diamond Lake Blvd. has taken out a city permit for \$22,000 for expansion of the City Lumber & Builders Supply Co. retail yard and its millwork plant.

John Todd, who heads the company, said the millwork plant will be tripled in size, and its capacity also will be about tripled. Considerable new equipment is being installed, along with a new blower system and rewiring of the building. The plant is managed by Ray Horton. Additional men have been hired bringing the payroll to eight men.

The City Lumber retail yard also will be about tripled in size, with additions to the display area and warehouse space. The entire layout, including yard facilities, are being revamped for increased operation. The company is managed by Ray Bagshaw.

The major expansion has been made necessary by the increased volume need in connection with several Todd Building contracts. Included are a new dormitory at Oregon State College, married student housing at the University of Oregon, mill work in connection with new construction at Oregon Technical Institute, and Riddle High School addition and new Cottage Grove Junior High School building.

Roseburg Driver Among CF's Safety Operators

BUS PG Roseburg Driver 18—ev One resident of Roseburg was among the 246 Portland-based drivers of Consolidated Freightways who recently achieved more than a million consecutive miles without an accident, John Belanger, CF's Western Area personnel and safety manager, announced.

Participants included W. R. Batton, 3060 NE Johnson, Roseburg. The million mile record was achieved between April 4 and May 14, during which the Portland drivers accumulated 1,157,473 safe miles. The feat was one of three such safety records noted by Consolidated Freightways drivers in recent weeks.

FIRM INCORPORATES

Articles of incorporation are on file in Salem for Pankey Logging, Roseburg, signed by Donald H. Pankey, Ula Pankey and Donald S. Kelley, as attorneys.

New Natural Gas Pipeline Work Will Start On July 1

Work is expected to start July 1 on the southern leg of the new natural gas pipeline through southern Oregon.

The announcement was made this week by President E. K. Albert of California-Pacific Utilities Co.

He said an order for about half a million dollars for delivery of 2,550 tons of steel pipe to the company has been made for delivery by July 1. The order for the high-test transmission line pipe to be used in the construction of the main line from Grants Pass to Ashland went to Cal-Metal Corp. of Torrance, Calif.

Albert said the pipe used in making the pipe will be purchased from Columbia - Geneva Steel Division of U.S. Steel Co. and is being manufactured in the company's Geneva, Utah, plant. The iron was mined near Cedar City, Utah.

Meanwhile, Albert said, invitations have been submitted to nine pipeline contractors for the actual laying of the 54 miles of the main line from Ashland to Grants Pass. Construction is expected to start with the arrival of the steel pipe in Southern Oregon July 1, he said.

He pointed out that considerable savings in the cost of laying the pipe will be realized in the specification that all 6 and 10-inch pipe will be fabricated in 60-foot lengths, as compared to the usual 42-foot lengths.

Ray Doerner Buys 300-Acre Farm Property At Umpqua

County Commissioner Ray Doerner reports he has purchased the property known as the Bill Emery place, located at Umpqua.

The 300-acre farm was operated for many years by L. E. and Anna Thompson, now deceased, but since 1943 has been only slightly used.

The purchase was made from Leon Fink, Phoenix, Ariz., who operated the farm for only a brief period following purchase. In recent years the land has not been farmed. Buildings have been neglected.

Remodeling Starts

Doerner has started remodeling and modernizing the old frame, two-story residence, and also has cleared and plowed a 50-acre tract to be put into grass. Cultivation of the greater part of the acreage is planned for the future.

Previously one of Douglas County's leading poultry raisers, Doerner for the past few years has been turning to general farming and fruit production.

Firm in his belief that the market demand for Italian prunes will grow rapidly, Doerner reports he is turning his property near Melrose into the growing of prunes as rapidly as possible.

Plantings Planned

The newly acquired farm, he states, will be planted to grass and used for pasture immediately. He expects eventually, he states, to devote a considerable portion of the land to the growing of prunes.

The farm once was one of Douglas County's principal prune tracts, but orchards since have been removed.

Doerner says he will continue Umpqua and make it suitable for occupancy by a manager.



BOB HORN heads Multiple Listing

Bob Horn To Head Multiple Listing

Bob Horn was unanimously elected president for the coming year of the Roseburg Multiple Listing Service, at a meeting Monday at the Umpqua Hotel.

Horn succeeds L. P. McAnaney as president. Alice Smaller will continue as secretary-treasurer. McAnaney presided at the luncheon meeting.

Multiple Listing has been actively organized since July 1960, with the following firms represented: Bob Horn Real Estate, Douglas County Realty, Homefinders, McAnaney Real Estate, Roseburg Realty, Ted Smaller Real Estate and Winter Real Estate.

Tyson Named Conference Dean

The Rev. Alfred S. Tyson, rector of St. George's Episcopal Church in Roseburg, and chairman of the Music Commission of the Diocese of Oregon, will be at Lewis and Clark College June 24 through June 27 as dean of the Northwest Episcopal Music Conference being held there.

Over 70 organists and choir directors have registered so far, coming from all parts of Oregon and Washington. Faculty members include the Rev. Norman Mealy, professor of church music at the Episcopal seminary in Berkeley, Calif., and member of the Joint Commission on Church Music of the national Episcopal church, and also Dr. Thomas Matthews of Tulsa, Okla., dean of the nationally-known schools of church music at Evergreen, Colo.

Father Tyson is a member of the American Guild of Organists and served a number of years as a church organist before being ordained a priest.

Attending the conference with him will be Miss Linda Connine and Miss Charlotte Tyson from St. George's.



RALPH L. RUSSELL

Special Agent

- Home-Owners Protective Plan
- Mortgage Cancellation Insurance
- Disability and Life

Dial OR 3-4193
Roseburg, Oregon

NEW ALL-INCLUSIVE BOAT INSURANCE Complete Coverage



Fast claims service and fair settlements. Protects you on all U.S. and Canadian waterways. Covers nearly every risk at low cost.

FARMERS INSURANCE GROUP

- Dick Warren
- Art Subert
Res. Ph. OR 3-8372
- Glen Wright
Res. Ph. OR 3-5610

C. V. De Camp Dist. Mgr.

1602 S. E. Stephens
OR 3-2618

FULL home protection at less cost with a Homeowners Policy. Contact me today!



ELMER SCHWEITZER
OS 9-5058
Winston, Oregon

STATE FARM
Fire and Casualty Company
Home Office: Bloomington, Illinois

JUNE SPECIAL

Universal Joints Packed

LABOR ONLY **\$4.95** Reg. \$6.60

SPECIAL ..

UNIVERSAL JOINT PARTS AT SPECIAL DISCOUNT DURING MAY & JUNE ONLY

GENUINE FOMOCO PARTS

For All Fords -- 1949 thru 1963

LOCKWOOD MOTORS

Roseburg, Ore. OR 3-4485