

# Brazil Is Rich In Forest Products, Expanding Industry

This is the fourth in a series of articles designed to acquaint News-Review readers with five countries being studied by the Roseburg Sister City Committee. Readers will be asked next week to ballot on the countries which should be given major consideration. These ballots will serve as a basis for determination of the country from which Roseburg's sister city will be selected.

If Roseburg wants a big hand with the country which is rich in forest products, the land is rich in forest products. The land is rich in forest products. The land is rich in forest products.

Features Vary  
Its 65 million people live in a country which includes geographic features ranging from lush tropical forests to scrubland and desert. Nine tenths of the country lies in the tropical zone, but latitude, winds and climate produce a variety of climates.

Over half the country is covered by forests. The land is rich in forest products. The land is rich in forest products. The land is rich in forest products.

most of the northern part of the country. Brasilia, the capital since 1960, is most famous because it was literally carved from the wilderness. Located in a previously unpopulated area 600 miles inland from the coast.

Each had celebrated 25th wedding anniversaries in previous marriages. The country is truly a melting pot.

It remained an independent empire until 1888 when the Army overthrew the royal family and created a republic much along the lines of the U. S.

The country has always depended on agriculture, grazing and forestry. Her leading exports are coffee, cocoa, cotton and lumber.

# Pressure To Approve Or Reject Measures Focuses On Gov. Hatfield

SALEM (UPI) — Pressure to approve or reject measures approved by the 1963 legislature is now focused on the governor's office.

The governor's staff is buried under an avalanche of telegrams, telephone calls, letters and personal visits.

He already had vetoed two bills, and let five become law without signature.

Hatfield has three choices. He can veto a bill, he can sign it, or he can file it without signature with the secretary of state.

There is no "pocket veto" in Oregon. The governor has to veto a measure to kill it.

Warne Nunn, Hatfield's executive assistant; Travis Cross, the governor's press secretary, and legal counsel Loren Hicks wade through the bills.

Hicks makes a last legal review and complete summary of the bills. He prepares a statement for and against each measure before it is sent on to the governor's desk for final consideration.

It's a slow process. The legislature adjourned 10 days ago, but some 77 bills still hadn't been sent up to the governor's office.

When the session ended the entire focus of attention shifted to the governor's office.

Thur., June 13, 1963 — The News-Review, Roseburg, Ore. 7

If Your Paper Has Not Arrived By 6:15 P.M. Dial OR 2-3321 Between 6 & 7 P.M.

You Are Cordially Invited To Attend A

PIANO RECITAL

Given By Pupils of Gladys H. Strong Friday, June 14th - 8:00 P.M.

First Baptist Church

## SAFEWAY



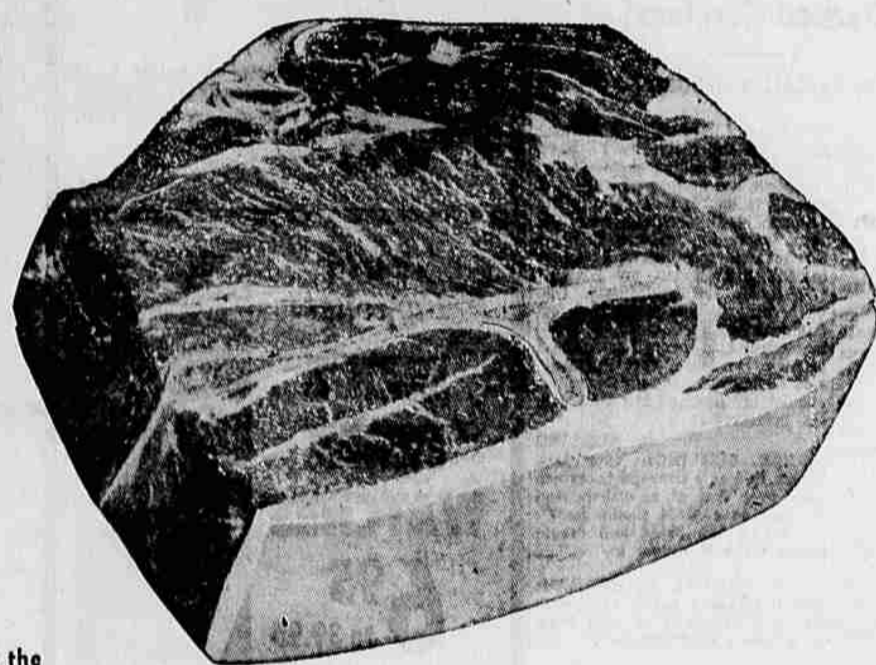
Safeway Sells Only U.S.D.A. Choice Grade Beef

## CHUCK ROASTS

All center-cut and 7-bone cuts. Family favorite pot roast.

lb. **39<sup>c</sup>**

Compare the trim; Compare the value.



Fresh Rabbits Cut Up lb. 59<sup>c</sup>

## MAKE DAD'S DAY A GLAD DAY!

### FRUIT COCKTAIL

Town House delicious variety of fruit bits. No. 303 can **6 for \$1**



### WESSON OIL MAYONNAISE

It's pure, it's poly-unsaturated! **29<sup>c</sup>** 24 oz. bottle  
Nu Made, Has a rich, fresh taste. **39<sup>c</sup>** 24 oz. jar

Low, Low Prices, Plus Gold Bond Stamps!



Check These Money-Saving Meat Cuts

**CHUCK STEAKS** U.S.D.A. Choice, Extra flavorful blade cuts. lb **49<sup>c</sup>**

**GROUND BEEF** 100% pure beef, quality controlled. Always fresh at Safeway. lb **39<sup>c</sup>**  
**T Bone Steaks** U.S.D.A. Choice "King" of Steaks lb. **98<sup>c</sup>**  
**Top Sirloins** Boneless, waste-free. Choice beef lb. **51<sup>9</sup>**  
**New York Steaks** U.S.D.A. Choice Aged beef lb. **51<sup>9</sup>**  
**Cross-Rib Roast** Boneless, waste-free oven roast lb. **69<sup>c</sup>**  
**Fancy Bacon** Safeway or Armour Star, 1-lb. pkg. **59<sup>c</sup>**  
**Cut-Up Fryers** Manor House, flash frozen fryers lb. **39<sup>c</sup>**

Your Money's Worth More at Safeway!

**Med. AA Eggs** Cream O' The Crop Always fresh at Safeway. Dozen **3 FOR \$1**  
**Enriched Flour** Kitchen Craft. Makes baking easy. 25 lb. bag **\$1.69**  
**Tomato Juice** Town House, Extra flavor; extra fresh! 46 oz. can **4 FOR \$1**

### COMPLETE YOUR SET!

THE WORLD WE LIVE IN by LIFE  
Only at Safeway can you get this wonderful 3-volume edition of LIFE'S exciting natural history of Earth.  
Volume 3 Now! "The Earth and the Universe"  
**\$1.39** per Copy  
All 3 Volumes Available Now at Safeway

**Instant Coffee** Folger's 10 oz. jar \$1.39 **6 oz. 99<sup>c</sup>**  
**Instant Coffee** Safeway 10 oz. jar \$1.19 **6 oz. 79<sup>c</sup>**  
**Gravy Train** Gaiene, makes its own gravy. 10 lb. **\$1.45**  
**POST TOASTIES** 18 oz. pkg. **39<sup>c</sup>**  
**Bran Flakes** 16 oz. **39<sup>c</sup>**  
**Raisin Bran** 14 oz. **39<sup>c</sup>**  
Your Choice

## DAIRY AND DELICATESSEN

READY-TO-SERVE CREME DE FRUIT **SALAD** Delicious fresh, and full of fruit. Lucerne, sated. Pt. **49<sup>c</sup>**  
**Whipping Cream** Lucerne Pint ctn. **65<sup>c</sup>**  
**Dairy Topping** Lucerne 7 oz. can **49<sup>c</sup>**  
**Party Dips** Lucerne 6 varieties 8 oz. **39<sup>c</sup>**  
**Safeway Cheese** Med., Sharp, and Mild. Snack bar. lb. **79<sup>c</sup>**

Shop Safeway for the Finest Farm-Fresh Produce

## WATERMELONS

Sweet and juicy red meat. Here's a real lip smackin' treat.  
Per Pound..... **5<sup>c</sup>**  
**Peaches** High Color; yellow meated. lb. **25<sup>c</sup>** **Plums** Burmese, sweet and juicy. lb. **29<sup>c</sup>**



**TRULY FINE NYLON SALE!**  
Lovely seamless for that "bare" look for summer. **3 PAIRS \$1.89**

Zest Soap, New improved. Reg. bar... 2 for 33c  
Zest Soap, Mild. Bath bars... 2 for 43c  
Premium Duz, Detergent. 23 oz. pkg. 63c  
Salvo Tablets, Pre-measured. 23 oz. 49c  
Cascades, for dishwashers. 20 oz. 49c  
Ivory Liquid, Pure, mild. 12 oz. 39c  
Thrill, Creamy pink. 32 oz. 99c  
Joy Liquid, Feel the mildness. 12 oz. 39c  
Downy, Fabric softener. 38 oz. 89c  
Comer Cleanser, Bleaches stains. 14 oz. 2/31c  
Spic & Span, Pine fresh. 16 oz. 31c  
Mr. Clean, All-purpose cleaner. 28 oz. 75c

**"SHOPPING FLING" SWEEPSTAKES**  
WIN \$5,000 in CASH... GARDEN... HOME STAPLES!  
ENTER SOON! ENTER OFTEN!  
GET DETAILS IN OUR STORE